



PARTS CATALOG

MERCUISER SEC J TRANSMISSION

SERIAL NUMBER

MISCELLANEOUSMercurusier Transmissions (1985 and Below)

TABLE OF CONTENTS:

71 AND 72 SERIES TRANSMISSION (INBOARD)	6
71 AND 72 SERIES TRANSMISSION (STERN DRIVE)	2
PARTS INDEX	8

NOTE: *Indented description indicate that these parts are included in preceeding assembly.*

AR = As Required

NSS = Not Sold Separate

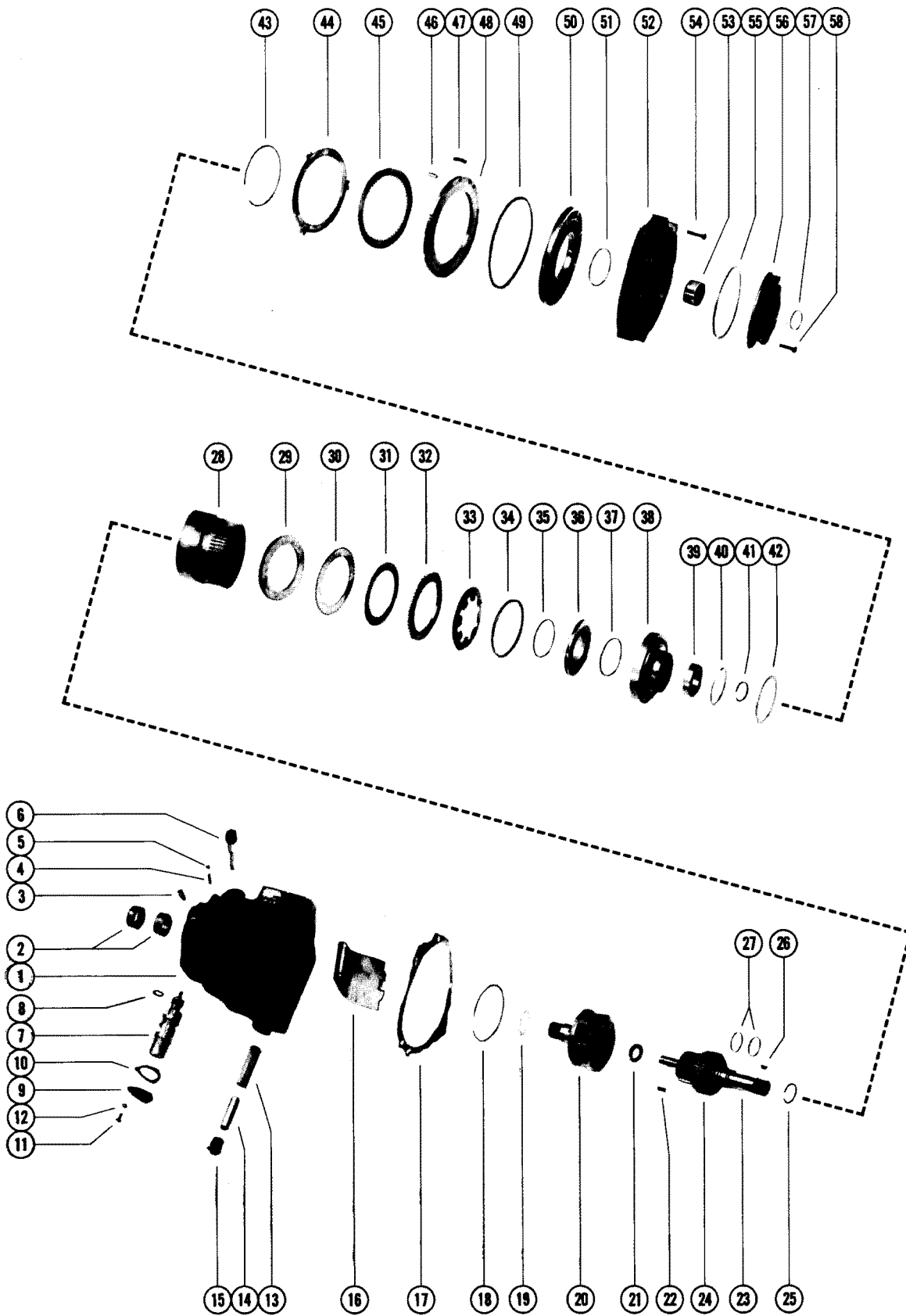
OPT = Optional

NS = Not Shown

THESE PARTS BOOKS/FICHE CARD ARE COPYRIGHTED AND MAY NOT BE DISTRIBUTED OR REPRODUCED IN ANY OTHER FORMAT BY ANYONE OTHER THAN MERCURY MARINE WITHOUT THE PRIOR WRITTEN CONSENT OF MERCURY MARINE.

THIS PAGE INTENTIONALLY LEFT BLANK

71 AND 72 SERIES TRANSMISSION (STERN DRIVE)

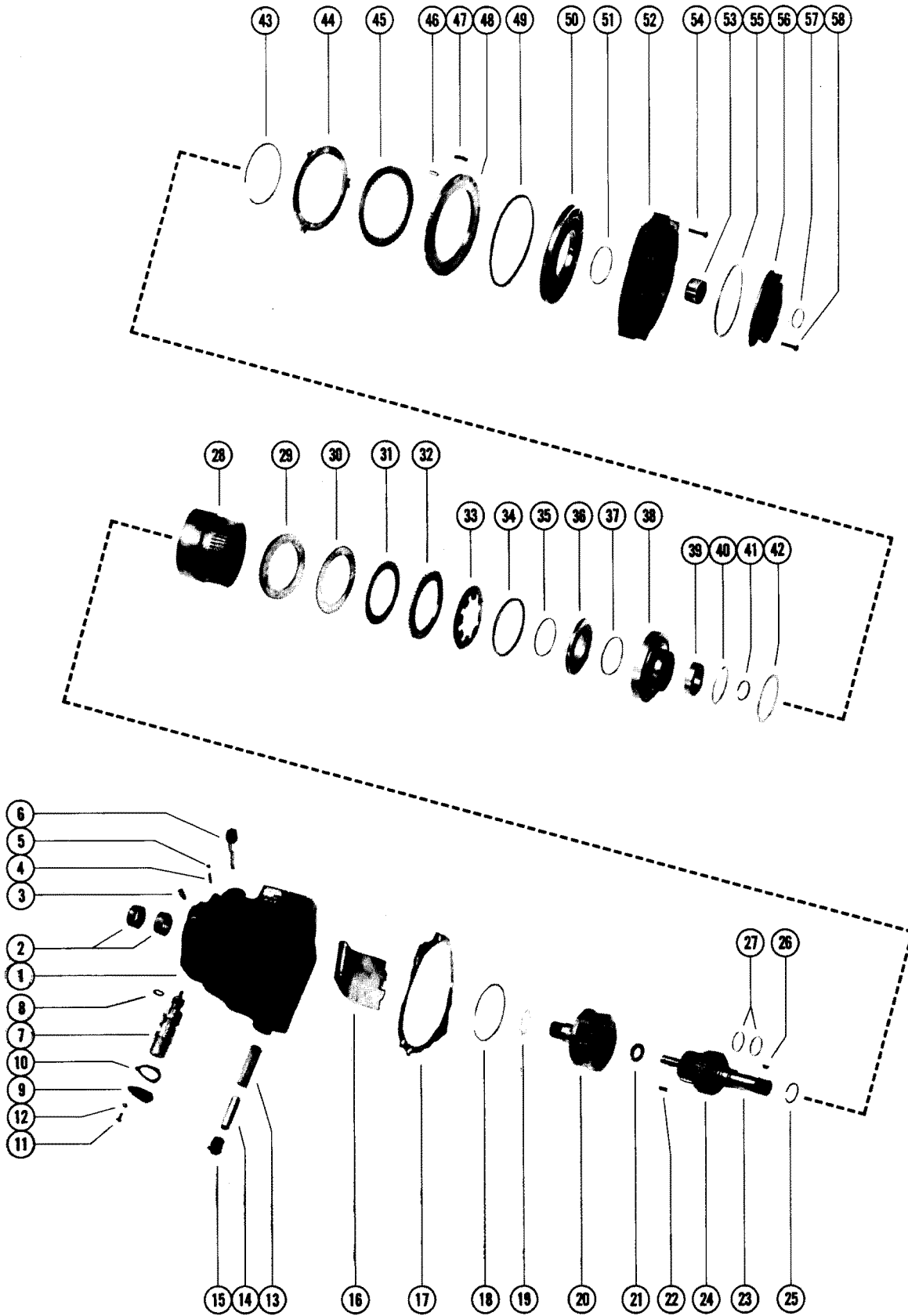


71 AND 72 SERIES TRANSMISSION (STERN DRIVE)

REF. NO.	PART NO.	SYM.	QTY.	DESCRIPTION
1	47753A3		1,	TRANSMISSION ASSEMBLY, COMPLETE (71 SERIES)
	47754A3		,1	TRANSMISSION ASSEMBLY, COMPLETE (72 SERIES)
2	23-56572		1,1	BUSHING KIT, TRANSMISSION HOUSING
3	N.S.S.		1,1	BREATHER, TRANSMISSION HOUSING
4			1,1	SPRING, POPPET - SHIFT LEVER TENSION
5			1,1	BALL, DETENT - SHIFT LEVER
6	65120A1		1,1	DIPSTICK AND TUBE, OIL LEVEL - TRANSMISSION
7	N.S.S.		1,1	SPRING AND VALVE ASSEMBLY
8			1,1	"O"RING, SPRINGANDVALVE
9	N.S.S.		1,1	COVER VALVE
10			1,1	GASKET, VALVE COVER
11	10-28063		3,3	SCREW, VALVE COVER TO HOUSING (5/8")
12	13-26992		3,3	LOCKWASHER, VALVE COVER SCREW
13	N.S.S.		1,1	STRAINER, OIL
14	N.S.S.		1,1	TUBE, OIL STRAINER
15	23-55558		1,1	BUSHING, OIL STRAINER TUBE
16	N.S.S.		1,1	BAFFLE, OIL
17			1,1	GASKET, FORWARD/REVERSE ADAPTOR
18			1,1	RING, SNAP - CLUTCH SPRING
19			1,1	WASHER, THRUST - PINION GEAR AND SHAFT
20	N.S.S.		1,	PINION GEAR AND SHAFT ASSEMBLY, OUTPUT FOR PINION GEAR BUSHINGS ORDER C-23-S6S6
	N.S.S.		,1	PINION GEAR AND SHAFT ASSEMBLY, OUTPUT FOR PINION GEAR BUSHINGS ORDER C-23-S6S6
21			1,1	WASHER, THRUST - DRIVE GEAR ANCI SNAT
22			1,1	KEY, DRIVE GEAR AND SHAFT
23	N.S.S.		1,	DRIVE GEAR AND SHAFT ASSEMBLY
	N.S.S.		,1	DRIVE GEAR AND SHAFT ASSEMBLY
24	N.S.S.		1,	GEAR, FORWARD CLUTCH
	N.S.S.		,1	GEAR, FORWARD CLUTCH
25			1,1	RING SNAP-DRIVE GEAR AND SHAFT
26			1,	KEY, FOWARD CLUTCH GEAR TO SHAFT
			,1	KEY, FORWARD CLUTCH GEAR TO SHAFT
27			2,2	RING, SEALING - DRIVE GEAR AND SHAFT
28	N.S.S.		1,	GEAR, RING
	N.S.S.		,1	GEAR, RING
29			1,1	PLATE, PRESSURE - CLUTCH PLATE) PART OF B-56571 CLUTCH PACIS KIT
30			AR,AR	PLATE, CLUTCH (OUTER) PART OF B-56571 CLUTCH PACIS KIT
31			AR,AR	PLATE, CLUTCH (INNER) PART OF B-56571 CLUTCH PACIS KIT
32			1,1	PLATE, PRESSURE - CLUTCH PLATE PART OF B-56571 CLUTCH PACIS KIT
33	24-56556		1,1	SPRING, CLUTCH PLATES

CONTINUED ON NEXT PAGE ➡

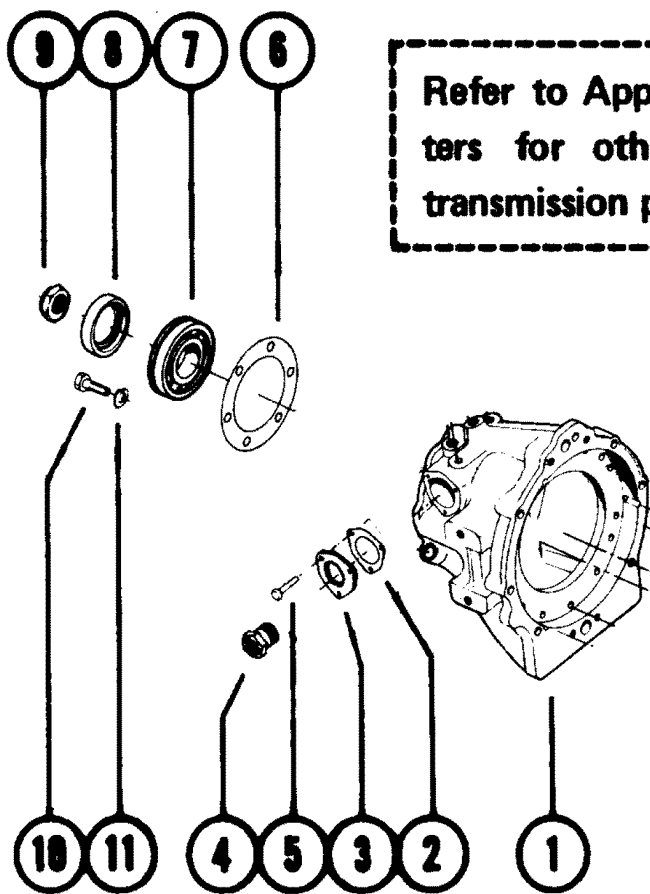
71 AND 72 SERIES TRANSMISSION (STERN DRIVE)



71 AND 72 SERIES TRANSMISSION (STERN DRIVE)

REF. NO.	PART NO.	SYM.	QTY.	DESCRIPTION
34			1,1	RING, SEALING - FORWARD CLUTCH PISTON
35			1,1	RING, FORWARD CLUTCH PISTON
36	N.S.S.		1,1	PISTON, FORWARD CLUTCH
37			1,1	"O" RING, FORWARD CLUTCH CYLINDER
38	N.S.S.		1,	CYLINDER, FORWARD CLUTCH
	N.S.S.		,1	CYLINDER, FORWARD CLUTCH
39	30-57522		1,	BALL BEARING, FORWARD CLUTCH CYLINDER
	30-56553		,1	BALL BEARING, FORWARD CLUTCH CYLINDER
40			1,	RING, SNAP - BALL BEARING RETAINING (LARGE)
			,1	RING, SNAP - BALL BEARING RETAINING (LARGE)
41			1,	RING, SNAP - BALL BEARING RETAINING (SMALL)
			,1	RING, SNAP - BALL BEARING RETAINING (SMALL)
42			1,1	WASHER, THRUST - FORWARD CLUTCH CYLINDER
43			1,1	RING, SNAP - RING GEAR
44	56567		1,	PLATE, REVERSE CLUTCH (OUTER)
	56567		,2	PLATE, REVERSE CLUTCH (OUTER)
45	56551		2,	PLATE, REVERSE CLUTCH
	56551		,3	PLATE, REVERSE CLUTCH
46			3,	PIN, DOWEL - PRESSURE PLATE
			,3	PIN, DOWEL - PRESSURE PLATE
47			12,12	SPRING, PRESSURE PLATE
48	N.S.S.		1,1	PLATE, PRESSURE
49			1,1	RING, SEALING - REVERSE CLUTCH PISTON
50	N.S.S.		1,1	PISTON, REVERSE CLUTCH
51			1,1	"O" RING, FORWARD/REVERSE ADAPTOR
52	N.S.S.		1,1	ADAPTOR, FORWARD/REVERSE
53	31-56547		1,1	ROLLER BEARING, FORWARD/REVERSE ADAPTOR
54			4,4	SCREW, FORWARD/REVERSE ADAPTOR ATTACHING
55			1,1	GASKET, FRONT PUMP
56	N.S.S.		1,1	FRONT PUMP ASSEMBLY, TRANSMISSION
57			1,1	OIL SEAL, FRONT PUMP
58			4,4	SCREW, FRONT PUMP TO ADAPTOR (1 1/2 ") - EARLY STYLE
			4,4	SCREW, FRONT PUMP TO ADAPTOR (1 3/8") - LATER STYLE

71 AND 72 SERIES TRANSMISSION (INBOARD)



Refer to Approved Warner Gear Service Centers for other Reduction and "V" Drive transmission parts and repairs.

71 AND 72 SERIES TRANSMISSION (INBOARD)

REF. NO.	PART NO.	SYM.	QTY.	DESCRIPTION
1	47805		1	TRANSMISSION(DIRECT DRIVE) (71 SERIES OR 10-17 SERIES)
	47806		1	TRANSMISSION(1.523:1 REDUCTION) (71 SERIES OR 10-17 SERIES)
	47807		1	TRANSMISSION(1.909:1 REDUCTION) (71 SERIES OR 10-17 SERIES)
	47808		1	TRANSMISSION(2.S7 L REDUCTION) (71 SERIES OR 10-17 SERIES)
	47809		1	TRANSMISSION (2.909:1 R EDUCTION) (71 SERIES OR 10-17 SERIES)
	47810		1	TRANSMISSION (DIRECT DRIVE) (72 SERIES OR 10-18 SERIES)
	47811		1	TRANSMISSION (1:523:1 REDUCTION) (72 SERIES OR 10-18 SERIES)
	47812		1	TRANSMISSION (1.909:1 REDUCTION) (72 SERIES OR 10-18 SERIES)
	47813		1	TRANSMISSION (2.57: 1 REDUCTION) (72 SERIES OR 10-18 SERIES)
	47814		1	TRANSMISSION (2.909:1 REDUCTION) (72 SERIES OR 10-18 SERIES)
2	N.S.S.		1	CAM, NETLTRAL SWITCH
3	N.S.S.		1	HOUSING, NEUTRAL SWITCH
4	N.S.S.		1	SWITCH, NEUTRAL
5	10-28668		3	SCREW, HOUSING TO TRANSMISSION (7/8")
6			1	GASKET, BEARING RETAINER(SAME AS SHOWN ON PAGE 2)
7	30-57540		1	BALL BEARING (71 SERIES)
	30-57551		1	BALL BEARING(72SERIES)
8			1	OIL SEAL, BEARING RETAINER(SAME AS SHOWN ON PAGE 2)
9	11-55548		1	NUT, MAIN SHAFT (71 SERIES)
	11-69927		1	NUT, MAIN SHAFT (72 SER I ES)
10	N.S.S.		OPT.	SCREW, RETAINER ATTACHING (1 1/8" - ALL THREADED)
	10-47462		OPT.	SCREW, RETAINER ATTACHING (1 1/4")
11	13-47659		6	LOCKWASHER, RETAINER SCREW

PARTS INDEX

Part Number	Description	Pg.	Ref. No.	Part Number	Description	Pg.	Ref. No.
47753A3	TRANSMISSION ASSEMBLY, COMPLETE (71 SERIES)	3	1	N.S.S.	GEAR, FORWARD CLUTCH	3	24
47754A3	TRANSMISSION ASSEMBLY, COMPLETE (72 SERIES)	3	1	N.S.S.	GEAR, RING	3	28
47805	TRANSMISSION(DIRECT DRIVE) (71 SERIES OR 10-17 SERIES)	7	1	N.S.S.	GEAR, RING	3	28
47806	TRANSMISSION(1.523:1 REDUCTION) (71 SERIES OR 10-17 SERIES)	7	1	N.S.S.	HOUSING, NEUTRAL SWITCH	7	3
47807	TRANSMISSION(1.909:1 REDUCTION) (71 SERIES OR 10-17 SERIES)	7	1	N.S.S.	PINION GEAR AND SHAFT ASSEMBLY, OUTPUT FOR PINION GEAR BUSHINGS ORDER C-23-S6S6	3	20
47808	TRANSMISSION(2.S7 L REDUCTION) (71 SERIES OR 10-17 SERIES)	7	1	N.S.S.	PINION GEAR AND SHAFT ASSEMBLY, OUTPUT FOR PINION GEAR BUSHINGS ORDER C-23-S6S6	3	20
47809	TRANSMISSION (2.909:1 R EDUCTION) (71 SERIES OR 10-17 SERIES)	7	1	N.S.S.	PISTON, FORWARD CLUTCH	5	36
47810	TRANSMISSION (DIRECT DRIVE) (72 SERIES OR 10-18 SERIES)	7	1	N.S.S.	PISTON, REVERSE CLUTCH	5	50
47811	TRANSMISSION (1:523:1 REDUCTION) (72 SERIES OR 10-18 SERIES)	7	1	N.S.S.	PLATE, PRESSURE	5	48
47812	TRANSMISSION (1.909:1 REDUCTION) (72 SERIES OR 10-18 SERIES)	7	1	N.S.S.	SCREW, RETAINER ATTACHING (1 1/8" - ALL THREADED)	7	10
47813	TRANSMISSION (2.57: 1 REDUCTION) (72 SERIES OR 10-18 SERIES)	7	1	N.S.S.	SPRING AND VALVE ASSEMBLY	3	7
47814	TRANSMISSION (2.909:1 REDUCTION) (72 SERIES OR 10-18 SERIES)	7	1	N.S.S.	STRAINER, OIL	3	13
56551	PLATE, REVERSE CLUTCH	5	45	N.S.S.	SWITCH, NEUTRAL	7	4
56551	PLATE, REVERSE CLUTCH	5	45	N.S.S.	TUBE, OIL STRAINER	3	14
56567	PLATE, REVERSE CLUTCH (OUTER)	5	44	10-28063	SCREW, VALVE COVER TO HOUSING (5/8")	3	11
56567	PLATE, REVERSE CLUTCH (OUTER)	5	44	10-28668	SCREW, HOUSING TO TRANSMISSION (7/8")	7	5
65120A1	DIPSTICK AND TUBE, OIL LEVEL - TRANSMISSION	3	6	10-47462	SCREW, RETAINER ATTACHING (1 1/4")	7	10
N.S.S.	GEAR, FORWARD CLUTCH	3	24	11-55548	NUT, MAIN SHAFT (71 SERIES)	7	9
N.S.S.	ADAPTOR, FORWARD/REVERSE	5	52	11-69927	NUT, MAIN SHAFT (72 SERIES)	7	9
N.S.S.	BAFFLE, OIL	3	16	13-26992	LOCKWASHER, VALVE COVER SCREW	3	12
N.S.S.	BREATHER, TRANSMISSION HOUSING	3	3	13-47659	LOCKWASHER, RETAINER SCREW	7	11
N.S.S.	CAM, NETLTRAL SWITCH	7	2	23-55558	BUSHING, OIL STRAINER TUBE	3	15
N.S.S.	COVER VALVE	3	9	23-56572	BUSHING KIT, TRANSMISSION HOUSING	3	2
N.S.S.	CYLINDER, FORWARD CLUTCH	5	38	24-56556	SPRING, CLUTCH PLATES	3	33
N.S.S.	CYLINDER, FORWARD CLUTCH	5	38	30-56553	BALL BEARING, FORWARD CLUTCH CYLINDER	5	39
N.S.S.	DRIVE GEAR AND SHAFT ASSEMBLY	3	23	30-57522	BALL BEARING, FORWARD CLUTCH CYLINDER	5	39
N.S.S.	DRIVE GEAR AND SHAFT ASSEMBLY	3	23	30-57540	BALL BEARING (71 SERIES)	7	7
N.S.S.	FRONT PUMP ASSEMBLY, TRANSMISSION	5	56	30-57551	BALL BEARING(72SERIES)	7	7
				31-56547	ROLLER BEARING, FORWARD/REVERSE ADAPTOR	5	53