

A. New Plastic Fuel Line Connector Kit – Mariner/Mercury/Sea Ray 35–90 Models

B. Backlash Indicator Tool – P/N 91–19660

C. Tillotson Carburetor Repair Kits

D. Boat Connector Wiring – Stalker/Thruster 24/12

A. NEW PLASTIC FUEL LINE CONNECTOR KIT – MARINER/MERCURY/SEA RAY 35–90 MODELS

Models listed may experience a slight air or fuel leak at the engine fuel connector. Pushing the connector in and holding it usually corrects the problem. Inspect the condition of the engine connector stem and fuel line connector seals. If they appear good, replace the metal engine fuel connector P/N22–14820 with the new plastic engine fuel connector (kit P/N 22–15781A10) with improved sealing characteristics. Kit contains fuel connector and three different grommets to seal the cowl on various models.

B. BACKLASH INDICATOR TOOL – P/N 91–19660

A new backlash indicator tool is now available to properly set gear lash on Mariner/Mercury/Sea Ray 100 HP and Mariner Mag II and Mercury XR4 gear housings. Figure 1 P/N 91–19660

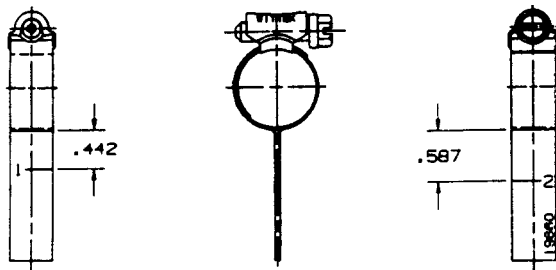


Figure 1. Backlash Indicator Tool P/N 91–19660

Line No.	Model	Gear Ratio
1	100	2.07:1
2	Magnum II/XR4	1.78:1

C. TILLOTSON CARBURETOR REPAIR KITS

Tillotson stopped manufacturing Carburetor Repair Kits several years ago. Walbro, the present vendor, can make all the Tillotson parts EXCEPT the idle tubes and main nozzles.

We chose to continue to offer Repair Kits for Tillotson carburetors without idle tubes and main nozzles. The alternative is to discontinue the repair kits.

To repeat: Tillotson idle tubes and main nozzles are no longer available and are not included in the carburetor repair kits.

D. BOAT CONNECTOR WIRING – STALKER/THRUSTER 24/12

Many bass boats are pre-wired and equipped with a convenience type connector (quick connection plug). The same outlet often has a charge/run switch which is used when recharging the batteries.

We have received some calls because the wires are color-coded differently. The wiring diagram (Figure 2) illustrates the correct wiring procedure.

The following precautions must be observed:

PLUG and RECEPTACLE must have a minimum 30 amp rating and be a polarized type (one which will not allow accidental reversed polarity connection to be made).

Fuse or circuit breaker protection for electrical wiring must have minimum 30 amp rating.

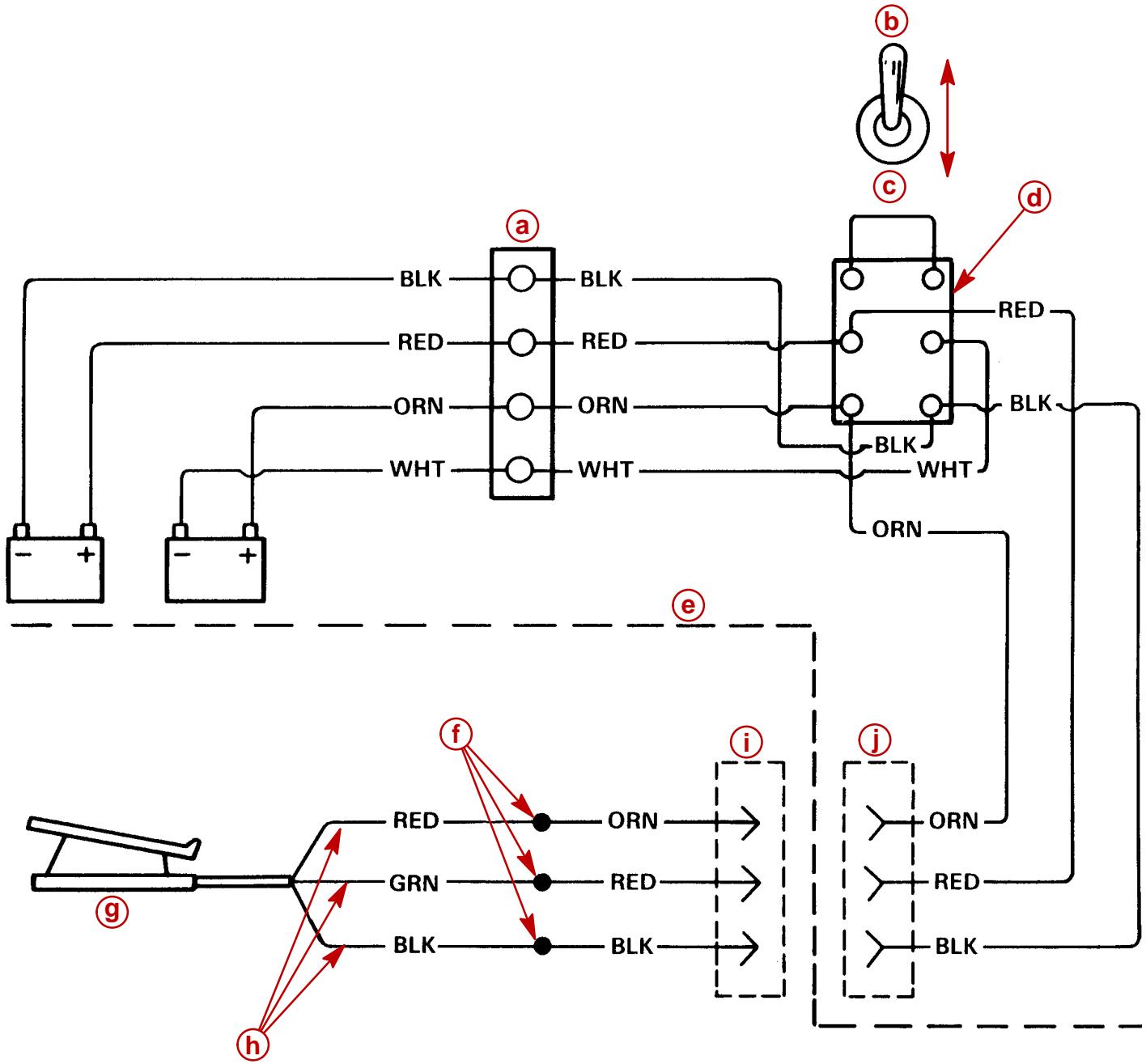


Figure 2. Mercury/Mariner 24/12 Wiring Diagram

- a** - Terminal Block
- b** - Charge
- c** - Run
- d** - Back of Charge / Run Switch
- e** - Boat Wiring
- f** - Splices between Foot Control and Plug Pigtails
- g** - Foot Control
- h** - Leads from Foot Control
- i** - Plug
- j** - Receptacle