

Circulate to:  Sales Manager  Accounting  Service Manager  Technician  Parts Manager

## Mercury Computer Diagnostic System – Software Release Version 7

### Models Affected

- All Outboards
- All MerCruiser

### Situation

**All active Computer Diagnostic Systems should be running Version 7 software.** The most current DVD release of software that was shipped to dealerships worldwide (at the beginning of June, 2006) is version **7.26**. This was a major release of software for Mercury Marine with many new features, as well as translation into five languages. This major software release is only available for installation from a DVD.

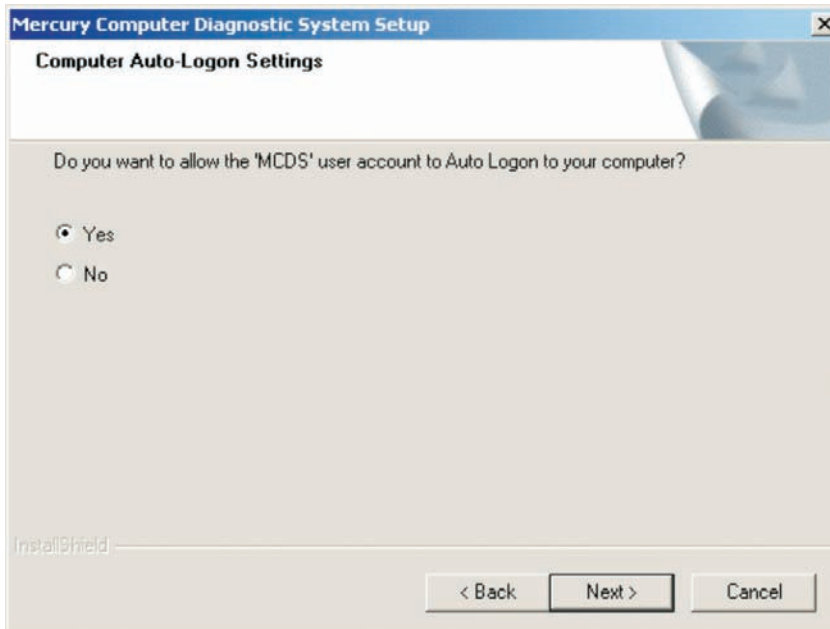
Some of the new features introduced in version 7.26 are as follows:

- Installation routine
- Integrated Service Manual interface
- Information security changes
- Software Translation
- 14-pin Harness Test
- Digital Pressure Meter interface
- Pinpoint Diagnostics for MY 2005 and 2006 Verado
- ECM and PCM Reflash

THE INFORMATION IN THIS DOCUMENT IS CONFIDENTIAL AND PROTECTED BY COPYRIGHT AND IS THE PROPERTY OF MERCURY MARINE.

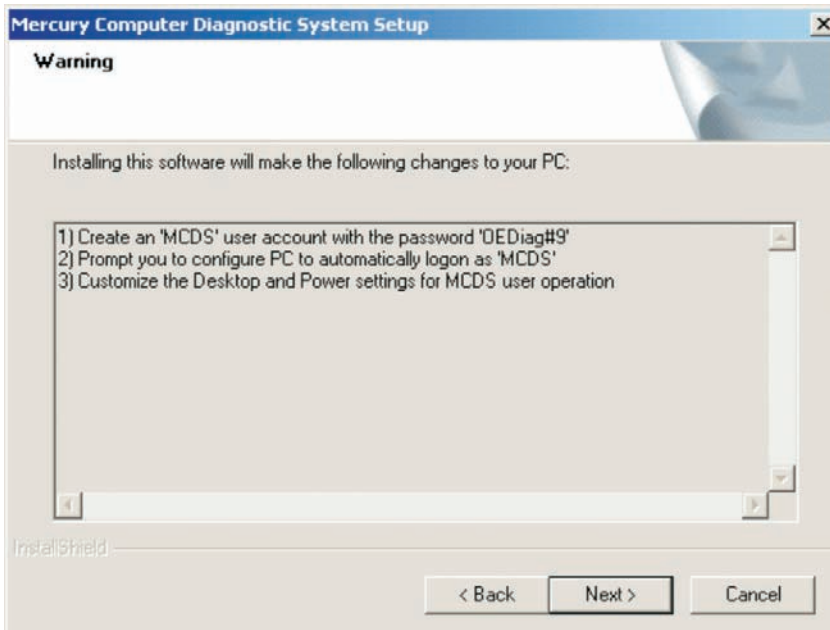
This document is provided for the sole and exclusive use of the original recipient as prescribed by Mercury Marine and may not be distributed or copied, digitally or otherwise, without the prior written consent of Mercury Marine.

1. The new installation routine allows those users with username and network restrictions to install the software specific to their needs. A "Yes" selection to auto-logon will allow the PC to automatically log onto Windows as the MCDS user when the system is booted. A selection of "No" will cause the system to request a username and password before entering Windows every time the system is booted.



25482

- a. The **MCDS** user password has been changed to **OEDiag#9** for the version 7.26 release.

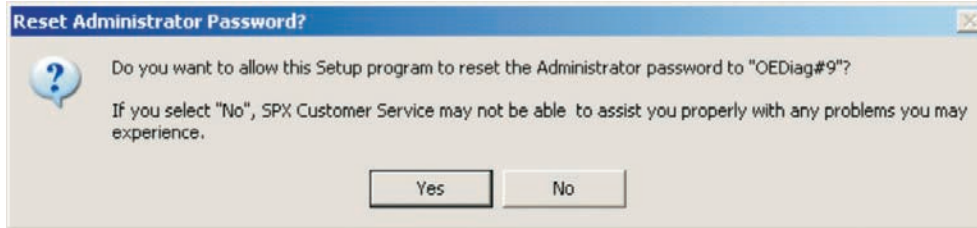


25482

THE INFORMATION IN THIS DOCUMENT IS CONFIDENTIAL AND PROTECTED BY COPYRIGHT AND IS THE PROPERTY OF MERCURY MARINE.

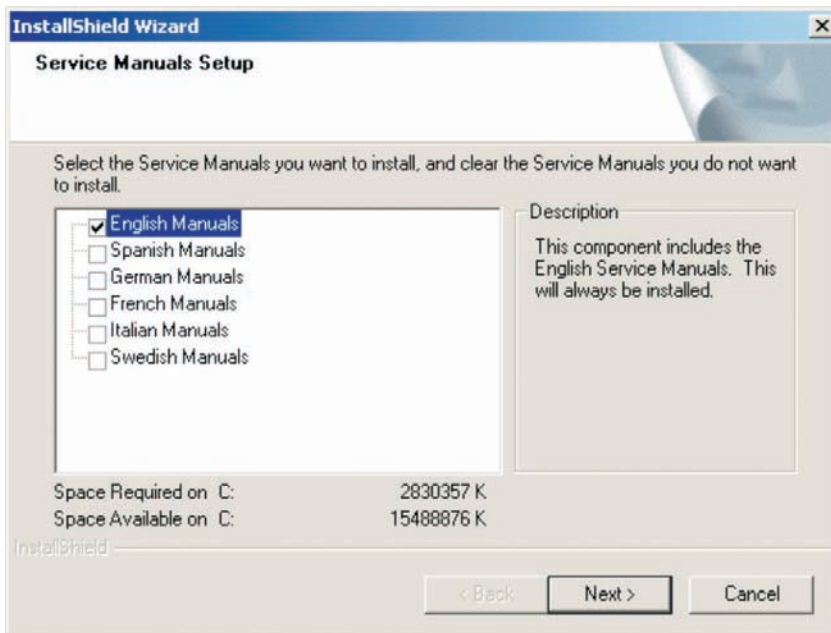
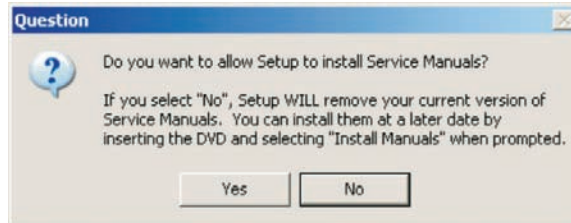
This document is provided for the sole and exclusive use of the original recipient as prescribed by Mercury Marine and may not be distributed or copied, digitally or otherwise, without the prior written consent of Mercury Marine.

- b. The next selection in the installation process is to allow the Administrator password to be reset to **OEDiag#9** also. If "No" is selected, the Administrator user password will be left alone. Notice the password character structure is complex for those users with installation and network restrictions requiring this security rule.



25484

- c. The last selection in the process is for the installation of Service Manuals. Installation of electronic Service Manuals is optional, but recommended.

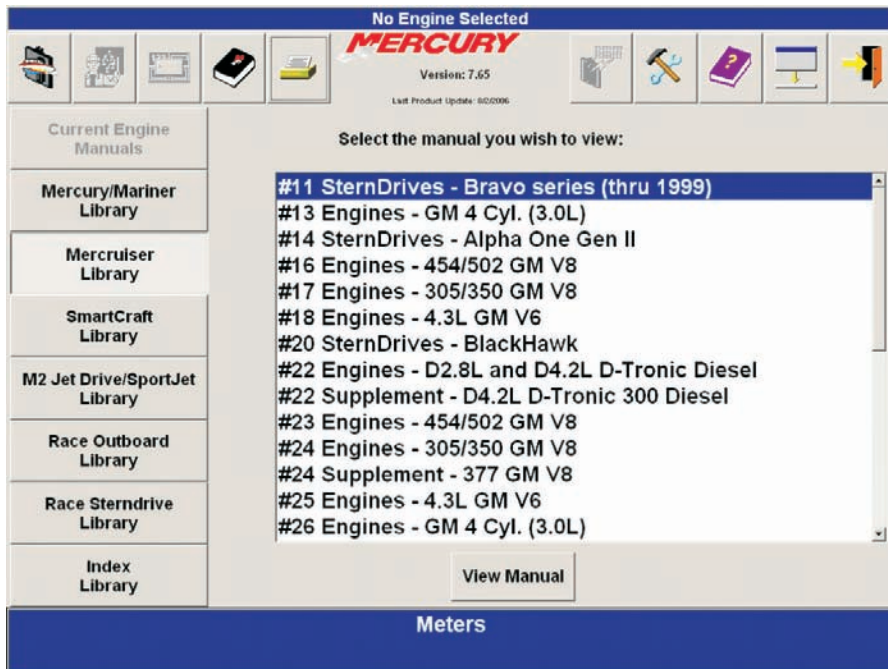


25486

THE INFORMATION IN THIS DOCUMENT IS CONFIDENTIAL AND PROTECTED BY COPYRIGHT AND IS THE PROPERTY OF MERCURY MARINE.

This document is provided for the sole and exclusive use of the original recipient as prescribed by Mercury Marine and may not be distributed or copied, digitally or otherwise, without the prior written consent of Mercury Marine.

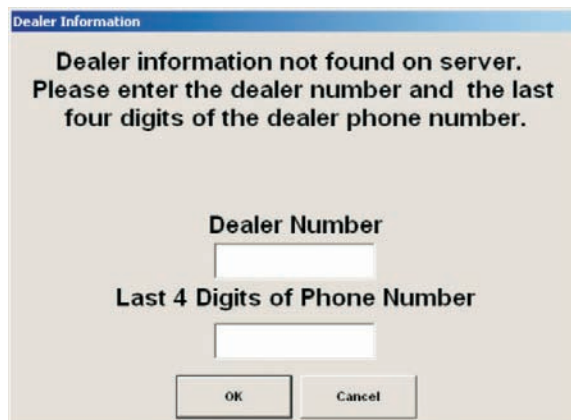
- The integrated Service Manual interface allows users who installed Service Manuals to select from multiple product libraries in order to view them in a portable document format (PDF). The previous interface was HTML-based which required the user to make an engine selection related to the product line of manuals they want to view.



25485

- Version 7.26 requires all users to enter their current and full dealer number as well as the last four digits of the phone number registered with Mercury Marine. The sole reason for this change is to keep current and secure information specific to individual dealers and ensure the correct information resides on the system. It will also reduce the amount of time it takes to complete WebSync updates.

**IMPORTANT:** Version 7 release requires more frequent WebSync activity. You must complete a WebSync every month to avoid the possibility of system shutdown. If the software has not completed a WebSync by day 60 (60 days since the last WebSync), the software will be temporarily disabled from use until a WebSync has been completed.



25487

THE INFORMATION IN THIS DOCUMENT IS CONFIDENTIAL AND PROTECTED BY COPYRIGHT AND IS THE PROPERTY OF MERCURY MARINE.

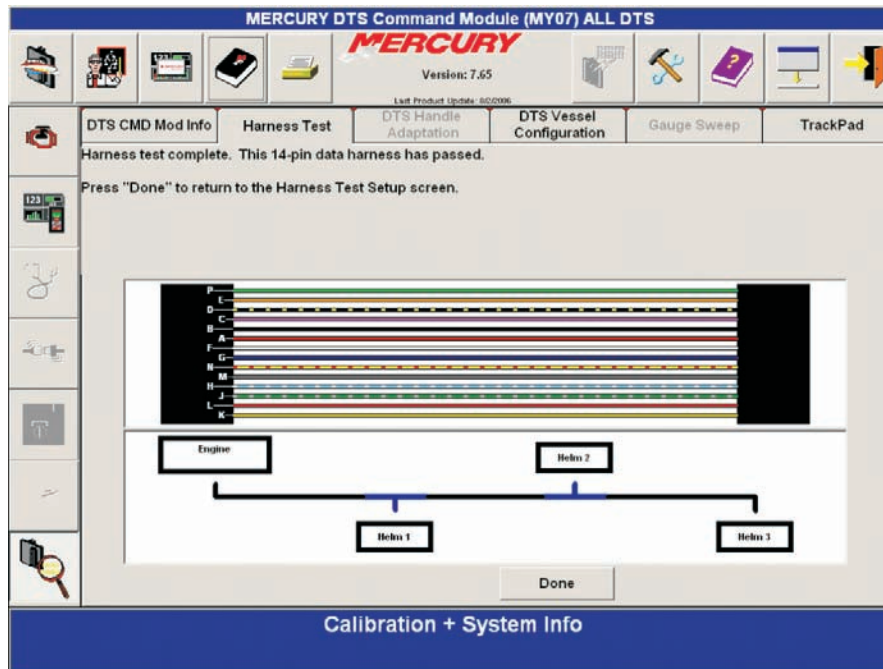
This document is provided for the sole and exclusive use of the original recipient as prescribed by Mercury Marine and may not be distributed or copied, digitally or otherwise, without the prior written consent of Mercury Marine.

4. New to this and every Mercury diagnostic tool are translations. Version 7 is viewable in Spanish, French, Italian, German, Swedish and English. To change a viewable or printable language, simply select from the drop-down menus in the Language section of Setup and Utilities.



25489

5. The 14-pin harness test was developed to shorten the time to rig multiple station vessels and to troubleshoot those vessels that are already rigged. This test, with the proper test cable (Part Number 84-889243A01), will allow the user to test every wire of a 14-pin harness for opens and shorts to verify its integrity.

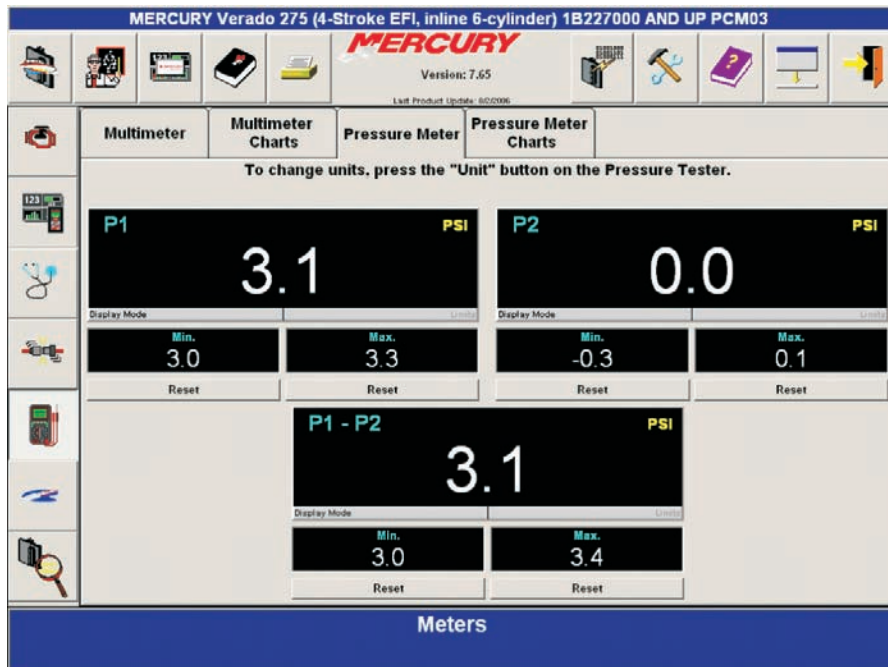


25491

THE INFORMATION IN THIS DOCUMENT IS CONFIDENTIAL AND PROTECTED BY COPYRIGHT AND IS THE PROPERTY OF MERCURY MARINE.

This document is provided for the sole and exclusive use of the original recipient as prescribed by Mercury Marine and may not be distributed or copied, digitally or otherwise, without the prior written consent of Mercury Marine.

- The digital pressure meter (Part Number 91-892651A01) has been integrated into the software similar to the multimeter. Selection of the pressure meter is located in the top-right corner of the Setup and Utilities screen. Use of the pressure meter will be through the Meters icon in the Toolbox or during a Generic Injector Test.



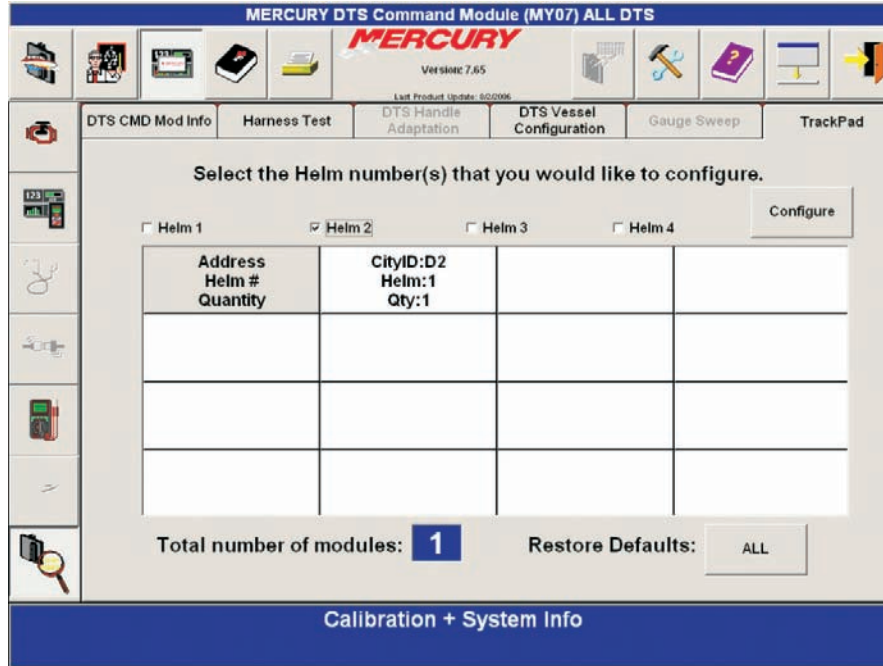
25492

- Additional Pinpoint Diagnostics have been added for this release and will continue to be added to future releases. See the "What's New?" screen for details on what faults have been added.
- ECM and PCM reflash will be slowly rolled out to a limited number of dealers. The capability of reflashing an ECM/PCM rather than replacing it will reduce off-water time for our customers as well as repair time for dealers. The initial rollout for the use of this capability will be very limited through the end of this year, but will grow over the next two years.

THE INFORMATION IN THIS DOCUMENT IS CONFIDENTIAL AND PROTECTED BY COPYRIGHT AND IS THE PROPERTY OF MERCURY MARINE.

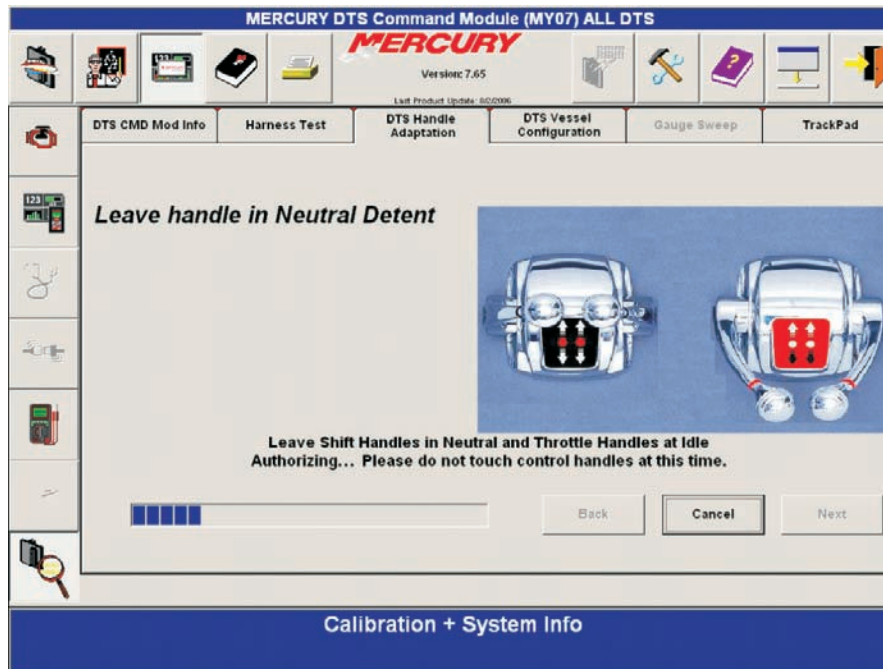
This document is provided for the sole and exclusive use of the original recipient as prescribed by Mercury Marine and may not be distributed or copied, digitally or otherwise, without the prior written consent of Mercury Marine.

- Available for download via WebSync is version **7.65**. This version allows users to configure multiple track pads for use on an individual DTS application.



25493

- Also added in the **7.65** download is Yacht Handle configuration software for the new Mercury controls that will begin production in the coming months.



25494

There will be additional internet releases that will take place before the end of the year, so frequent WebSyncs will be necessary to keep the software current and take advantage of these free upgrades.

THE INFORMATION IN THIS DOCUMENT IS CONFIDENTIAL AND PROTECTED BY COPYRIGHT AND IS THE PROPERTY OF MERCURY MARINE.

This document is provided for the sole and exclusive use of the original recipient as prescribed by Mercury Marine and may not be distributed or copied, digitally or otherwise, without the prior written consent of Mercury Marine.