

Circulate to: Sales Manager Accounting Service Manager Technician Parts Manager

Oil Pump Replacement - 75/90 & 115 Four Stroke

Models Affected

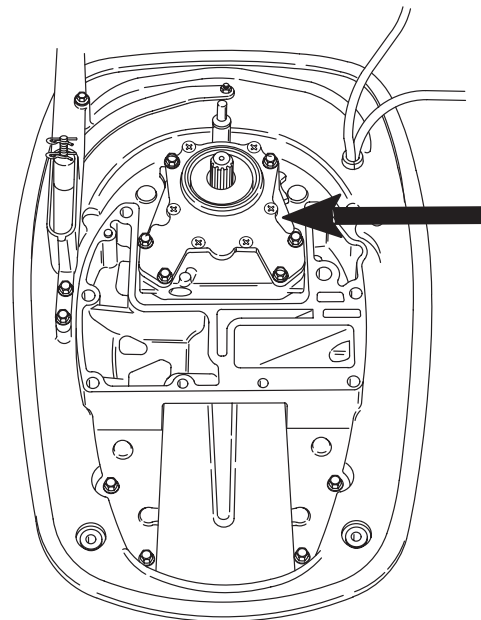
MERCURY/MARINER

2001 & 2002 Model Year

75/90 & 115 Four Stroke

S/N OT379461 thru OT449224

It is necessary to replace the oil pump on the models listed in this Service Information Bulletin. The oil pump is located on the top of the adaptor plate and removal of the powerhead is required to obtain access. Outboards produced after the serial number listed do not require replacement of the oil pump.



The replacement oil pump, Mercury part number 858579T3, has a painted green dot on the forward end and a date code ink stamped on the bottom. Please refer to the INSPECTION/TEST section following for appropriate markings and date code. Oil pumps in dealer inventory identified by Mercury part numbers 858579, 858579T1, and 858579T2 should be returned to Mercury for credit.

Owner Notification

A letter will be sent to registered owners of an affected outboard. The letter will reference Service Information Bulletin 2001-19 and will advise the owner to return the outboard to their selling dealer, or any Mercury/Mariner authorized dealer, for an oil pump replacement.

Parts Interchangeability

Use only 858579T3 for replacement of any 75/90 and 115 four stroke oil pump.

Dealer Parts Inventory

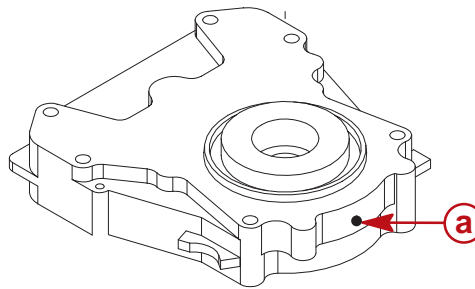
USA customers: Return any unused 858579, 858579T1, or 858579T2 oil pumps in your inventory using the Mercury Precision Parts UNDER 30 DAYS RETURNS PROGRAM. You may use the form on the back of any parts and accessories packing list. Please note on the form that the return is part of Service Information Bulletin 2001-19. All returns must be sent freight prepaid to:

Mercury Marine
Attn: Return Goods – Service Information Bulletin 2001-19
W6250-22A Pioneer Road
Fond du Lac, WI 54935

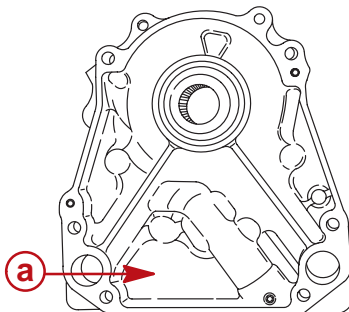
Non-USA customers: Return any unused 858579, 858579T1, or 858579T2 oil pump to the appropriate distribution center for credit. Follow the normal return parts procedure. Please make reference to Service Information Bulletin 2001-19.

Inspection/Test

The replacement oil pump, Mercury part number 858579T3, with an improved seal has a green dot on the forward end and a date code of “12L” (or later) ink stamped on the bottom.



a - Green Dot



a - Inked Date Code

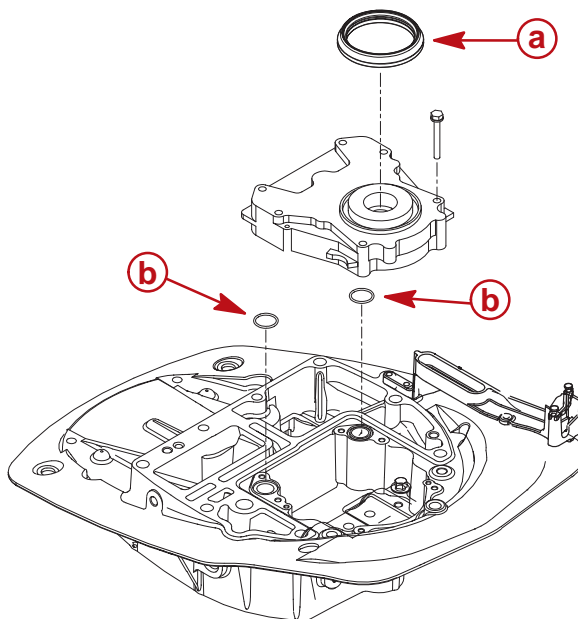
Date Code: 12L and later.

1	2	L
Year	Month	Day
2001	February (1-9 & X, Y, Z)	21 (1-9 & A, B, C, etc.)

Some of the latest 858579T3 oil pumps may be installed on outboards within the serial number range. Before replacement, inspect for the green dot on the front of the oil pump housing. It may be a bit difficult, but the front of the oil pump can be observed with a light from the front port side of the outboard between the shift bracket and the bottom of the air silencer. If the green dot is visible, replacement is not necessary.

Correction

It is necessary to remove the powerhead to obtain access to the oil pump. The gasket below the powerhead and the two O-rings should be replaced along with the oil pump. The rubber seal between the top of the oil pump and the bottom of the powerhead may be reused. Refer to the appropriate service manual for proper torque sequence and torque specifications for the oil pump and power head.



- a** - Seal (Reuse)
- b** - O-Ring

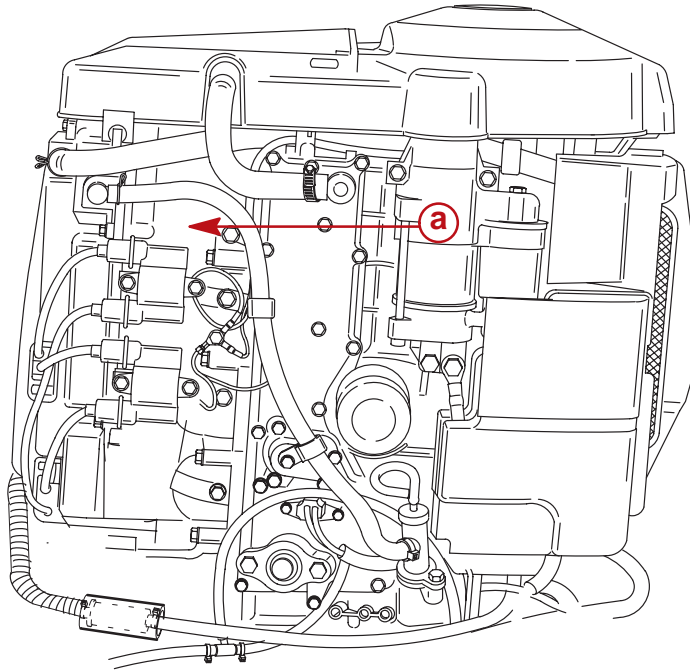
It is not necessary to remove the lower unit to replace the oil pump. However, if the lower unit is removed, use limited force when inserting the lower unit drive shaft into the oil pump. The lower seal is exposed and a violent contact by the drive shaft may damage the seal.

Parts Required

Qty. 1	858579T3	Oil Pump
Qty. 1	27-858732--1	Powerhead Gasket
Qty. 2	25-858581	O-Ring

Repair Identification

Factory – Outboards within the serial number range that were reworked at the factory are marked. The shipping carton has a dark blue dot on the outside on the serial number label. The outboard has a light blue mark or dot on the cylinder head #1 exhaust tube located above the top ignition coil.



a - Light Blue Mark on #1 Exhaust Tube

Dealer – Mark the cylinder head #1 exhaust tube with a white dot to identify replacement of the oil pump.

Warranty

Mercury Marine will credit the dealer for the cost of parts and labor for one year from the issuance of this advisory or bulletin. Please note the month and year located at the lower left corner of the front page of this document.

Complete warranty claim listing:

Outboard serial number.

Qty. 1	858579T3	Oil Pump
Qty. 1	27-858732--1	Powerhead Gasket
Qty. 2	25-858581	O-Ring

Two and eight tenths (2.8) hours labor.

Warranty Flat Rate Code –

Two (2.0) hours	SB20 = 2.0
Eight tenths (.8) hour	SB08 = 0.8

Part Failure Code – 418.

Failure Mode – 00.

US & Canada – Return oil pump with claim.

International – Hold parts for inspection/disposal by a Marine Power International technical representative.



Mercury Marine
Marine Products and Services

W6250 Pioneer Road
P.O. Box 1939
Fond du Lac, WI 54936-1939 USA
Phone: 920-929-5000
www.mercurymarine.com

Dear Mercury Marine Customer:

Our records indicate that you are the owner of a Mercury/Mariner 4-Stroke Outboard. We know you have a choice when powering your boat and we appreciate you choosing the Mercury 4-Stroke Outboard. We want to ensure that you are pleased and satisfied with your purchase.

We would like to inform you that it is necessary to replace the oil pump due to the possibility of the oil seal dislodging from the housing.

WHAT YOU SHOULD DO

Please contact your authorized Mercury Outboard dealer, preferably the one who sold you the outboard, and make arrangements for replacement of the oil pump. Your dealer will refer to Mercury Service Bulletin 2001-19 for instructions. You will need to deliver your outboard to the dealer and present this letter; the reverse side is a claim-form your dealer needs to send to us for reimbursement.

NOTE: *If your boat is in storage, you may want to wait until you remove it from storage to have this service performed.*

WHAT MERCURY WILL DO

Mercury Marine will reimburse the authorized dealer for the replacement of the oil pump in your outboard in line with the service bulletin.

Mercury sincerely apologizes for any inconvenience this situation has caused you or your family. We are taken this action, however, to ensure that your boating experience will be trouble-free and enjoyable.

Sincerely,

Mercury Technical Service Department



WARRANTY CLAIM

<table border="1"> <tr> <td>DATE RECEIVED AM</td> <td>DATE RECEIVED PM</td> <td>DATE PROMISED AM</td> <td>DATE PROMISED PM</td> </tr> </table>				DATE RECEIVED AM	DATE RECEIVED PM	DATE PROMISED AM	DATE PROMISED PM	ENGINE SERIAL NUMBER	
				DATE RECEIVED AM	DATE RECEIVED PM	DATE PROMISED AM	DATE PROMISED PM		
CUSTOMER NAME				DEALER CODE					
ADDRESS				DEALER NAME					
CITY, STATE, ZIP				DEALER ADDRESS					
MODEL / SERIAL NUMBER				CITY, STATE, ZIP					
DATE OF SALE				ORDER NUMBER	LABOR RATE				
DESCRIPTION OF FAILURE Oil Pump Replacement				BOAT TYPE					
Service Bulletin 2001-19				H.I.N.					
FAILURE CODE 418-00	FAILURE CODE DESCRIPTION Oil Pump/S.B. Adj.	NOTE: WARRANTY CLAIM MUST BE RECEIVED WITHIN 30 DAYS OF REPAIR DATE TO BE CONSIDERED FOR APPROVAL.	PRE-AUTHORIZATION NUMBER	ENTER DATE					

PRODUCT (CHECK ONE ONLY) <input checked="" type="checkbox"/> OUTBOARD <input type="checkbox"/> STERNDRIVE <input type="checkbox"/> INBOARD <input type="checkbox"/> INFLATABLES <input type="checkbox"/> JET <input type="checkbox"/> QUICKSILVER P&A (ATTACH RECEIPT) <input type="checkbox"/> OTHER - SPECIFY _____		DATE FAILED DATE REPORTED DATE REPAIRED HOURS USED	
--	--	---	--

REPAIR PARTS IDENTIFICATION				
QTY	PART NUMBER	PART DESCRIPTION	LIST PRICE	TOTAL
1	858579T3	Oil Pump		
1	27-858732--1	Powerhead Gasket		
2	25-858581	O-Ring		

LABOR PERFORMED PER FLAT RATE MANUAL			
CODE	DESCRIPTION	HOURS	DOLLARS
SB20		2.0	
SB08		0.8	
TOTAL LABOR			
TOTAL PARTS			
SUB TOTAL			
TAX			
SUBLET LABOR (RECEIPT ATTACHED)			
FREIGHT (ATTACH RECEIPT IF OVER \$10.00)			
GRAND TOTAL			

I HEREBY AUTHORIZE THE ABOVE REPAIR WORK TO BE DONE AND GRANT YOU AND/OR YOUR EMPLOYEES PERMISSION TO OPERATE THE UNIT AS NECESSARY FOR TESTING AND/OR INSPECTION.

CUSTOMER AUTHORIZATION

ATTENTION