

OEM No. 2004-08

Bulletin No. 2004-08

Circulate to: Sales Manager Accounting Service Manager Technician Parts Manager

25 HP (2-Stroke) EPA Decal - Incorrect Information

Models Affected

Models Covered	Serial Number Or Year
25 HP (2-Stroke)	2004 Model Year S/N OT801000 through OT851665

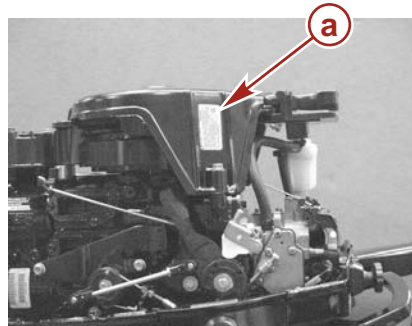
Situation

The EPA decal for the 25 HP engines listed the incorrect FEL information. The correct FEL number is 192.05 g/kWh.

Correction

The problem was identified and the decal was corrected starting with serial number OT851666. To rectify this problem, the corrected EPA decal should be applied over the existing decal according to the following instructions.

1. Remove the engine cover.
2. The decal is located on the rewind starter housing as shown in the picture.



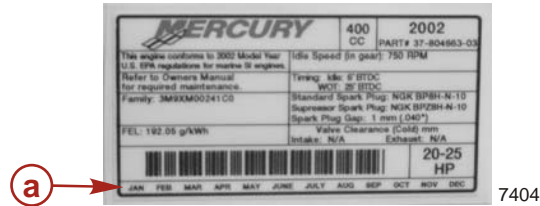
7403

a - EPA decal

THE INFORMATION IN THIS DOCUMENT IS CONFIDENTIAL AND PROTECTED BY COPYRIGHT AND IS THE PROPERTY OF MERCURY MARINE.

This document is provided for the sole and exclusive use of the original recipient as prescribed by Mercury Marine and may not be distributed or copied, digitally or otherwise, without the prior written consent of Mercury Marine.

- Note the month on the original decal. Using a scissors or a hole punch, notch the same month on the new decal.



a - Location on decal indicating the months of the year

- Clean the surface of the original decal containing the incorrect information using rubbing alcohol or equivalent.
- Apply the new decal directly over the original decal on the rewind starter housing.

Owner Notification

A letter will be sent to every registered owner of an affected outboard. Note that an EPA decal is included with each letter. The owner does have the option of applying the decal in lieu of taking the outboard to a Mercury Outboard dealer. If the owner is not comfortable with applying the decal, the letter will advise the owner to return their outboard to their selling dealer or any authorized Mercury Outboard dealer to perform this task.

Parts Required

Qty.	Description	Part Number
1	EPA decal	37-804663 004

Warranty

For out of warranty situations, contact Mercury Outboard Dealer Technical Service for a pre-authorization.

Complete warranty claim listing:

- Engine serial number
- Qty. 1 P/N 37-804663 004
- Labor = 0.5 hour
- Warranty Flat Rate Code = SB05
- Part Code = 907
- Failure Code = 00

U.S. & CANADA

After performing the rework that is described in this bulletin, complete/process the warranty claim via MercNET.

International

Follow instructions issued by Marine Power International or by a Marine Power Distributor.

THE INFORMATION IN THIS DOCUMENT IS CONFIDENTIAL AND PROTECTED BY COPYRIGHT AND IS THE PROPERTY OF MERCURY MARINE.

This document is provided for the sole and exclusive use of the original recipient as prescribed by Mercury Marine and may not be distributed or copied, digitally or otherwise, without the prior written consent of Mercury Marine.