

Circulate to: Sales Manager Accounting Service Manager Technician Parts Manager

Diagnostic Tool Update – CDS G3 Software Version 1.3

NOTICE

The information released in this service bulletin supersedes any previously released bulletins regarding the CDS G3 diagnostic tool.

Models Affected

Models Covered	Serial Number
MerCruiser Axios Systems	All
MerCruiser Emissions Control Engines	All
30-60 HP FourStroke EFI Engines	1C104424 and above
Mercury Racing Sterndrive 1100 and 1350	All

Scope

Worldwide

Situation

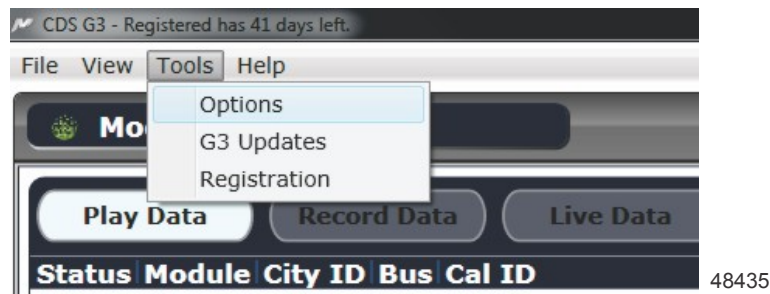
Mercury Marine is pleased to announce the release of a major update to the CDS G3 program. The update is being released on a compact disc (CD) and will be identified as software version 1.3. Complete CDS G3 kits (including the SmartCraft diagnostic interface cable) have been updated to include the Version 1.3 software.

Main Features of the Update

Unit of Measure

CDS G3 will now allow you to select the unit of measure of your choice. You can select "Metric," "English," or "Custom." The choice of custom will allow you to define each choice individually.

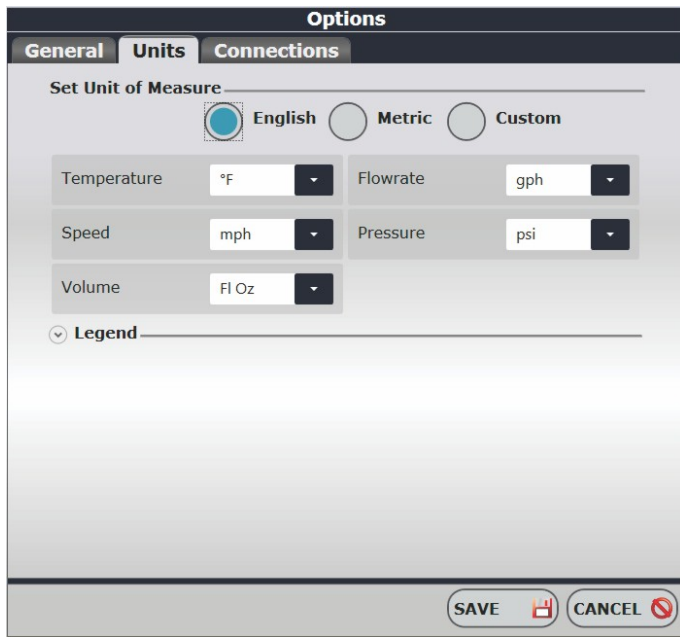
- You can adjust your settings by selecting "Tools" then "Options."



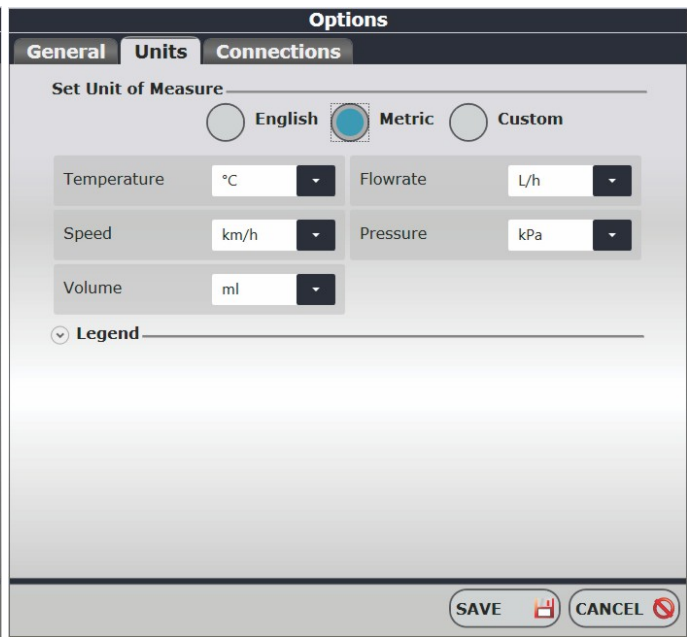
THE INFORMATION IN THIS DOCUMENT IS CONFIDENTIAL AND PROTECTED BY COPYRIGHT AND IS THE PROPERTY OF MERCURY MARINE.

This document is provided for the sole and exclusive use of the original recipient as prescribed by Mercury Marine and may not be distributed or copied, digitally or otherwise, without the prior written consent of Mercury Marine.

- Select the "Units" tab and select your settings.



English

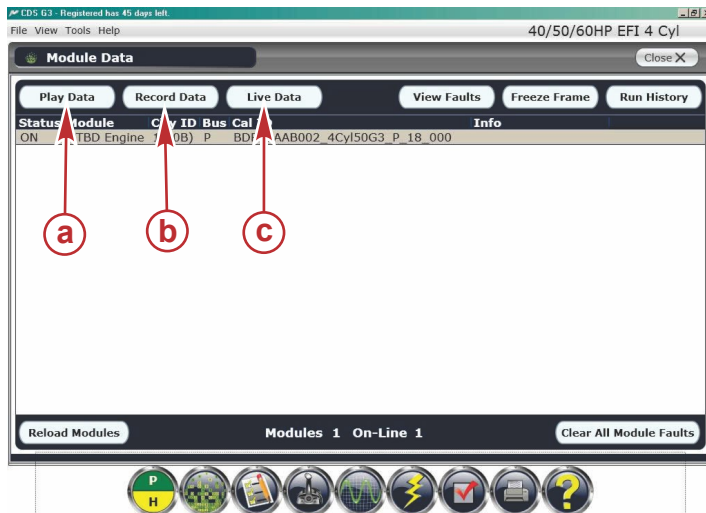


Metric

48434

Record Data

Also new in CDS G3 version 1.3 is the record data feature. This will provide the ability to record running engine data for later review. If requested by Mercury, you may also email this file for further analysis. Another feature within the record data function is the ability to export a recording as a CSV document. This provides the ability to bring this data into a program such as Microsoft Office Excel for the purpose of graphing.



48436

- a - "Play Data"—Play a recorded data file
- b - "Record Data"—Allows you to capture data for play back
- c - "Live Data"—Formerly "Data Stream," the "Live Data" screen provides the ability to monitor the engine data live

Installation

CDS G3 version 1.3 may be installed without a previous version of the software. Before proceeding with installation, complete all "High Priority Updates" as provided by Microsoft. If updating CDS G3 from version 1.0, uninstall the software prior to installation of software version 1.3. If updating from CDS G3 version 1.1 or 1.2, uninstalling is not required.

THE INFORMATION IN THIS DOCUMENT IS CONFIDENTIAL AND PROTECTED BY COPYRIGHT AND IS THE PROPERTY OF MERCURY MARINE.

This document is provided for the sole and exclusive use of the original recipient as prescribed by Mercury Marine and may not be distributed or copied, digitally or otherwise, without the prior written consent of Mercury Marine.

Computer Requirements

- PC with a 1.2 GHz Pentium processor or equivalent
- 2 GB RAM (4 GB or higher recommended)
- 120 GB hard drive
- USB 2.0 port (Qty. 2)
- DVD ROM optical drive
- Graphics display 1024 x 768
- Ethernet connection or Wi-Fi

Software Requirements

- Windows XP Professional - Service Pack 3 (recommended OS is Windows 7 Professional)

NOTE: CDS G3 version 1.3 is compatible with 32 or 64 bit Operating Systems.

- Internet access (required to register and receive software updates)

NOTE: Registration is required every 45 days.

Parts Required

Qty.	Description	Part Number
1	CDS G3 Version 1.3 (software only)	90-8M0059687

To order the update from Mercury Parts and Accessories, use part number 90-8M0059687. Each update disc includes a software license for one computer. Internet communication is required to register the software.

Those wanting to purchase a complete CDS G3 Diagnostic Tool Kit (with the SmartCraft diagnostic interface and adapter cables), should continue to use part number 90-8M0046124. This kit now ships with the Version 1.3 CD.

THE INFORMATION IN THIS DOCUMENT IS CONFIDENTIAL AND PROTECTED BY COPYRIGHT AND IS THE PROPERTY OF MERCURY MARINE.

This document is provided for the sole and exclusive use of the original recipient as prescribed by Mercury Marine and may not be distributed or copied, digitally or otherwise, without the prior written consent of Mercury Marine.