

TO: SERVICE MANAGER TECHNICIANS
PARTS MANAGER

No. 87-15

Oil Pressure Change in 1987 MCM V6 Stern Drive Engines

To improve oil pressure in the 262 CID (4.3L) engines, we have asked GM to install a stiffer oil pressure relief spring (Yellow in color) in the oil pumps.

With the new spring installed, an increase of 10 to 15 lbs. (69 – 103kPa) in oil pressure can be expected.

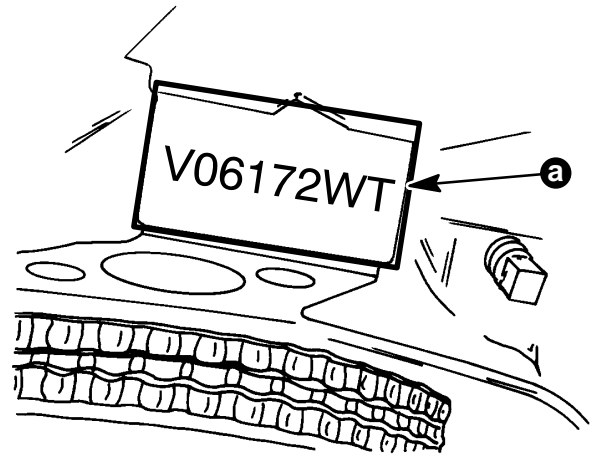
Following are the starting serial numbers for MCM V6 engines with the stiffer pressure relief springs installed.

MCM 175 OB 736838 and above
MCM 205 OB 736862 and above

Installers should be informed of this change as to keep engines matched in dual installation boats.

New power packages and replacement partial engines with the GM engine code of T03167KP (175 CID) or T03167KR (205 CID) and above will have the stiffer spring installed.

The GM engine code number is located on the front of the engine near the circulation pump. Below is an example of reading the date code. Figure 1



16425

a - Engine Code Location

Figure 1. G.M. Engine Code

EXAMPLE

VO	6	17	2	WT
	a.	b.	c.	d.

a - Month
b - Day
c - Year
d - Model