

Circulate to: Sales Manager Accounting Service Manager Technician Parts Manager

SmartCraft Clean Power Harness

Models Affected

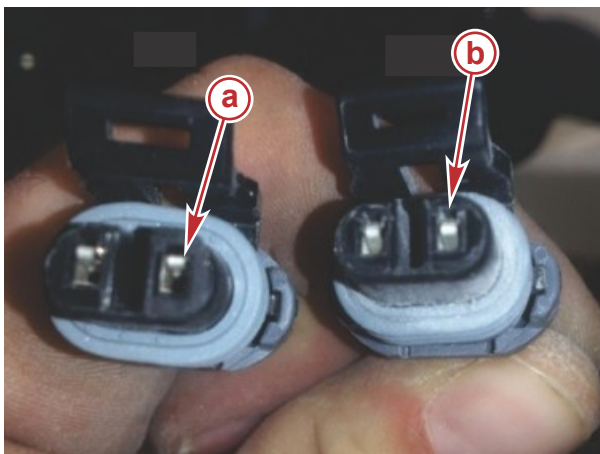
Models Covered	Harness Date Code	Affected Harness P/N	Affected Kit P/N Level
MerCruiser ECT Mechanical and All Digital Throttle and Shift (DTS) Engines or Boats Rigged with DTS Engines	12/01/2012–07/15/2013	8M0012402	8M0064698 888416T04

Scope

Worldwide

Situation

During the manufacturing process some of the female terminals in the clean power 2-pin connector were spread too wide, creating the possibility for either an intermittent electrical failure (occasional engine shutdown), or a complete break in power (engine cannot start, or started then stopped and cannot be restarted). For connectors that were not spread too wide during the manufacturing process, normal electrical component performance and reliability is expected. For connectors that were spread too wide there is a high probability that one of the two electrical failures (intermittent or complete open circuit) will occur either immediately on attempted engine start-up, or very soon thereafter.



53621

a - Bad
b - Good

The engine may experience a number of conditions, including:

1. No start condition.
2. Starts and runs normally, but randomly shuts down. Will not restart.
3. Starts and runs normally, but randomly shuts down. Key up horn will sound immediately after shutdown without key switch input. Will restart OK.
4. Other abnormal electrical performance conditions can occur.

When any engine is being setup or run before sale, watch for any symptom described in this bulletin. If observed, replace the clean power harness.

THE INFORMATION IN THIS DOCUMENT IS CONFIDENTIAL AND PROTECTED BY COPYRIGHT AND IS THE PROPERTY OF MERCURY MARINE.

This document is provided for the sole and exclusive use of the original recipient as prescribed by Mercury Marine and may not be distributed or copied, digitally or otherwise, without the prior written consent of Mercury Marine.

Dealer and OEM Parts Inventory

Return any part number in the date code range listed in this bulletin. The date can be found on the label attached to the clean power harness. Return for credit.

USA customers: Return any parts in your inventory using the Mercury Precision Parts Under 30 Days Returns Program. You may use the form on the back of any parts and accessories packing list. Please note on the form that the return is part of MerCruiser Service Bulletin 2013-08 or MerCruiser OEM Bulletin 2013-07.

Mercury Marine

Attn: Return Goods – MerCruiser Service Bulletin 2013-08 or MerCruiser OEM Bulletin 2013-07

W6250-22A Pioneer Road

Fond du Lac, WI 54935

Non-USA customers: Return parts to the appropriate distribution center for credit. Follow the normal return parts procedure.

Correction

Correct if any of the conditions described in the **Situation** section are reported by the customer, or observed during setup, inspect the battery connections and replace any clean power harness in the date codes listed if the conditions mentioned in this bulletin are present. Replace with P/N 888416T04.

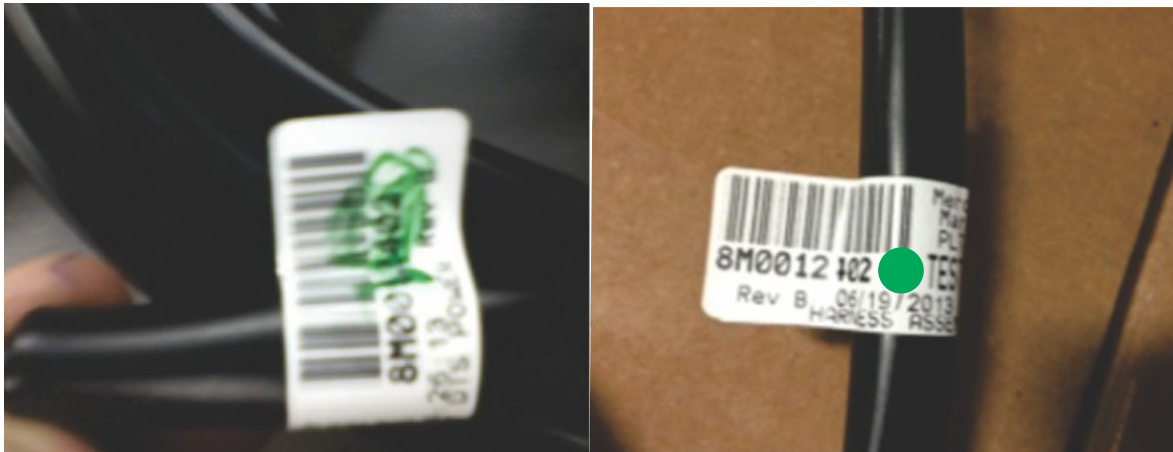
NOTE: Do not attempt to repair the harness. Replace clean power harness complete.

Parts Required

Qty.	Description	Part Number
1	Clean power harness	888416T04

Repair Identification

Parts inspected at the factory will have a green mark on the P/N tag.



53622

Dealer identification

Warranty

If the engine or harness is under warranty, complete a warranty claim under standard warranty conditions.

THE INFORMATION IN THIS DOCUMENT IS CONFIDENTIAL AND PROTECTED BY COPYRIGHT AND IS THE PROPERTY OF MERCURY MARINE.

This document is provided for the sole and exclusive use of the original recipient as prescribed by Mercury Marine and may not be distributed or copied, digitally or otherwise, without the prior written consent of Mercury Marine.