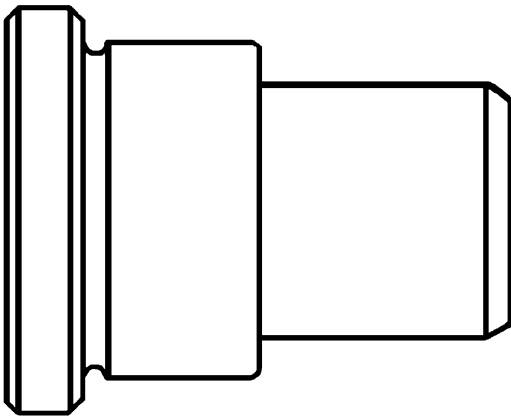


Revised 9-29-95

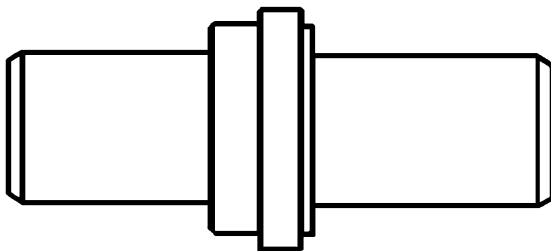
HI-PERFORMANCE GEARCASE TOOLS FOR GEARCASES WITH 1.25" (31.75MM) DIAMETER PROPSHAFTS

Two new service tools are available to service the current (CLE) gearcase with the 1.25" (31.75 mm) dia. propshaft.

The tools are 91-816292 for installing the propshaft needle bearing into the bearing carrier, and 91-816294 for installing the propshaft seals into the bearing carrier.



91-816292 Needle Bearing Installation Tool

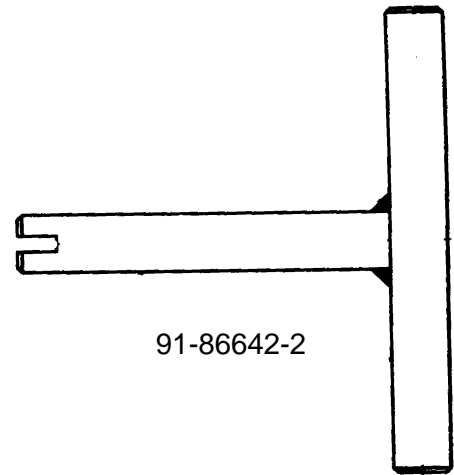


91-816294 Seal Installation Tool

Other special tools necessary for repairing a Hi-Performance gearcase are the threaded cross pin installation tools.



91-86642-1



91-86642-2

Cross Pin Installation Tools