



# PARTS CATALOG

## II STERN DRIVE

### SERIAL NUMBER

II 1964-1967 ..... 1602186 THRU 2278488

# TABLE OF CONTENTS:

DRIVE SHAFT HOUSING AND REVERSE LOCK .....	16
DRIVE SHAFT HOUSING ASSEMBLY AND GEAR ASSEMBLY .....	22
GEAR HOUSING ASSEMBLY, COMPLETE .....	26
GIMBAL HOUSING AND GIMBAL RING ASSEMBLY .....	12
INNER AND OUTER TRANSOM PLATE AND SHIFT ARM .....	2
INNER TRANSOM PLATE, CLAMP NUT AND CRANK ASSEMBLY .....	6
PARTS INDEX .....	30
STEERING LEVER HOUSING ASSEMBLY .....	8

**NOTE:** *Indented description indicate that these parts are included in preceeding assembly.*

**AR** = As Required

**NSS** = Not Sold Separate

**OPT** = Optional

**NS** = Not Shown

**THESE PARTS BOOKS/FICHE CARD ARE COPYRIGHTED AND MAY NOT BE DISTRIBUTED OR REPRODUCED IN ANY OTHER FORMAT BY ANYONE OTHER THAN MERCURY MARINE WITHOUT THE PRIOR WRITTEN CONSENT OF MERCURY MARINE.**

# **REPLACEMENT PARTS ! WARNING !**

Electrical, ignition and fuel system components on MerCruiser Engines and Stern Drives are designed and manufactured to comply with U.S. Coast Guard Rules and Regulations to minimize risks of fire or explosion. Use of replacement electrical, ignition or fuel system components, which do not comply to these rules and regulations, could result in a fire or explosion hazard and should be voided.

When servicing the electrical, ignition and fuel systems, it is extremely important that all components are properly installed and tightened. If not, any electrical or ignition component opening would permit sparks to ignite fuel vapors from fuel system leaks, if they existed.

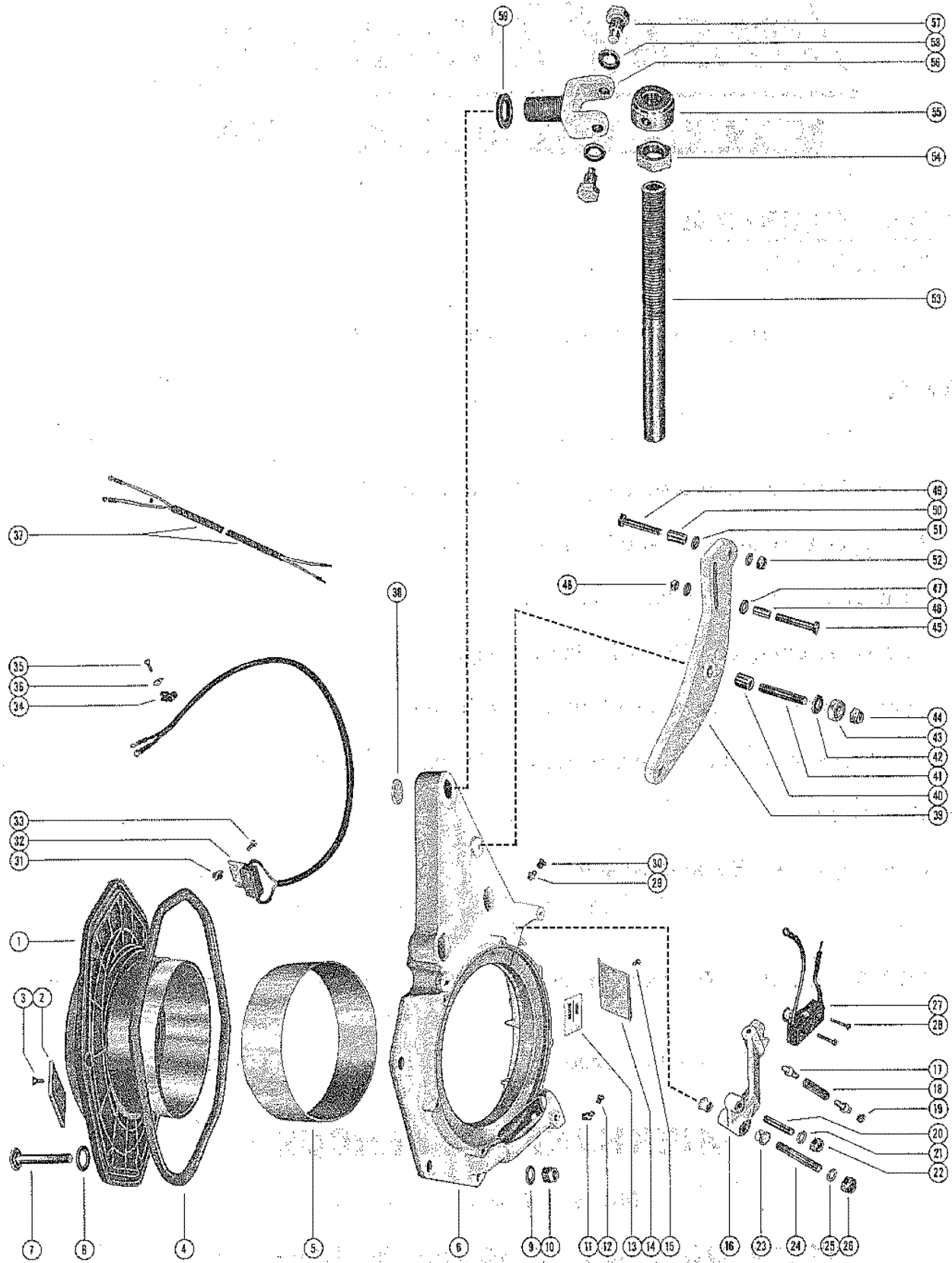
## **ENGINE MECHANICAL COMPONENTS**

Many of the engine mechanical components are designed for marine applications. Unlike automotive engines, marine engines are subjected to extended periods of heavy load and wide- open-throttle operation, therefore, require heavy-duty components. Special marine engine parts have design and manufacturing specifications, which are required to provide long life and dependable performance. Marine engine parts also must be able to resist the corrosive action of salt or brackish water that will rust or corrode standard automotive parts within a short period of time.

Failure to use recommended Mercury Precision Parts OR Quicksilver service replacement parts can result in poor engine performance and/or durability, rapid corrosion of parts subjected to salt water and possibly complete failure of the engine.

Use of parts other than recommended service replacement parts will void the warranty on those parts which are damaged as a result of the use of other than recommended parts.

# INNER AND OUTER TRANSOM PLATE AND SHIFT ARM

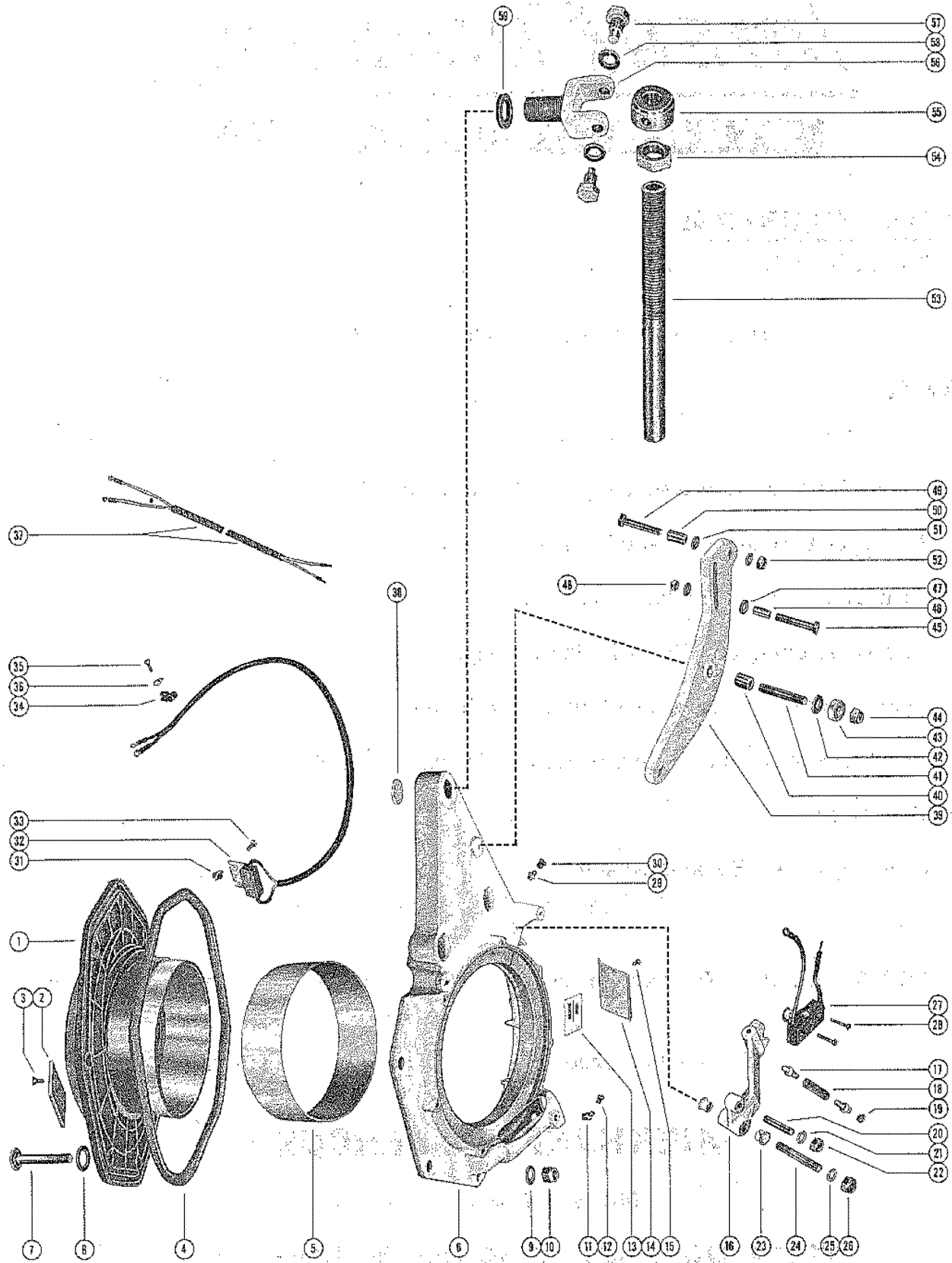


# INNER AND OUTER TRANSOM PLATE AND SHIFT ARM

REF. NO.	PART NO.	SYM.	QTY.	DESCRIPTION
1	32276A2		1	PLATE ASSEMBLE, TRANSOM-OUTER
2	34762A1		1	PLATE ASSEMBLY, INHIBITOR-OUTER TRANSOM PLATE
3	10-34763		2	SCREW, INHIBITOR PLATE TO OUTER TRANSOM PLATE
4	31636		1	SEAL, RUBBER-OUTER TRANSOM PLATE TO TRANSOM
5	32795		1	LINER, OUTER TRANSOM PLATE
6	34193		1	PLATE, TRANSOM-INNER
7	10-35624		8	BOLT, OUTER TRANSOM PLATE TO INNER TRANSOM PLATE (4")
8	12-32620		8	WASHER, RUBBER-OUTER TRANSOM PLATE BOLT
9	12-21900		8	WASHER, OUTER TRANSOM PLATE BOLT
10	11-34087		8	NUT, OUTER TRANSOM PLATE BOLT
11	22-25094		1	FITTING, GREASE (45)- INNER TRANSOM PLATE
12	29359		1	LUBRICAP, INNER TRANSOM PLATE GREASE FITTING
13	37-32049		1	LABEL, ENGINE ROTATION-INNER TRANSOM PLATE
14	34056		1	COVER, LOCK-IN LIMIT SWITCH-INNER TRANSOM PLATE
15	10-26668		2	SCREW, COVER TO INNER TRANSOM PLATE
16	32463A2		1	ARM ASSEMBLY, CUT-OUT SWITCH ACTUATING-INNER TRANSOM PLATE
17	32464		2	PLUNGER, SWITCH ACTUATING ARM
18	24-32922		1	SPRING, COMPRESSION-SWITCH ACTUATING ARM PLUNGER TENSION
19	33501		1	RETAINER, SPRING AND PLUNGER TO SWITCH ACTUATING ARM
20	16-20075		1	STUD, SHIFT ACTUATING CABLE TO SWITCH ACTUATING ARM
21	12-29245		1	WASHER, SWITCH ACTUATING ARM CABLE STUD
22	11-20361		1	NUT, SWITCH ACTUATING ARM CABLE STUD
23	23-26841		2	BUSHING, SWITCH ACTUATING ARM TO INNER TRANSOM PLATE STUD
24	16-32467		1	STUD, SWITCH ACTUATING ARM TO INNER TRANSOM PLATE (2 5/16")
25	12-20546		1	WASHER, SWITCH ACTUATING ARM TO INNER TRANSOM PLATE STUD
26	11-35814		1	NUT, SWITCH ACTUATING ARM TO TO INNER TRANSOM PLATE STUD
27	30866A2		1	SWITCH ASSEMBLY, CUT-OUT-INNER TRANSOM PLATE <b>BOLT AND NUT DISCONNECT</b>
28	39670A1		2	SWITCH ASSEMBLY, CUT-OUT-INNER TRANSOM PLATE <b>QUICK-DISCONNECT</b>
	10-30902		2	SCREW, CUT-OUT SWITCH TO INNER TRANSOM PLATE
29	22-23612		1	FITTING, GREASE-INNER TRANSOM PLATE
30	29359		1	LUBRICAP, INNER TRANSOM PLATE GREASE FITTING
31	34060		1	PLUNGER, OUTER TRANSOM PLATE
32	34051A2		1	SWITCH ASSEMBLY, LOCK-IN LIMIT-OUTER TRANSOM PLATE
33	10-34055		2	SCREW, LOCK-IN LIMIT SWITCH TO OUTER TRANSOM PLATE

CONTINUED ON NEXT PAGE ➡

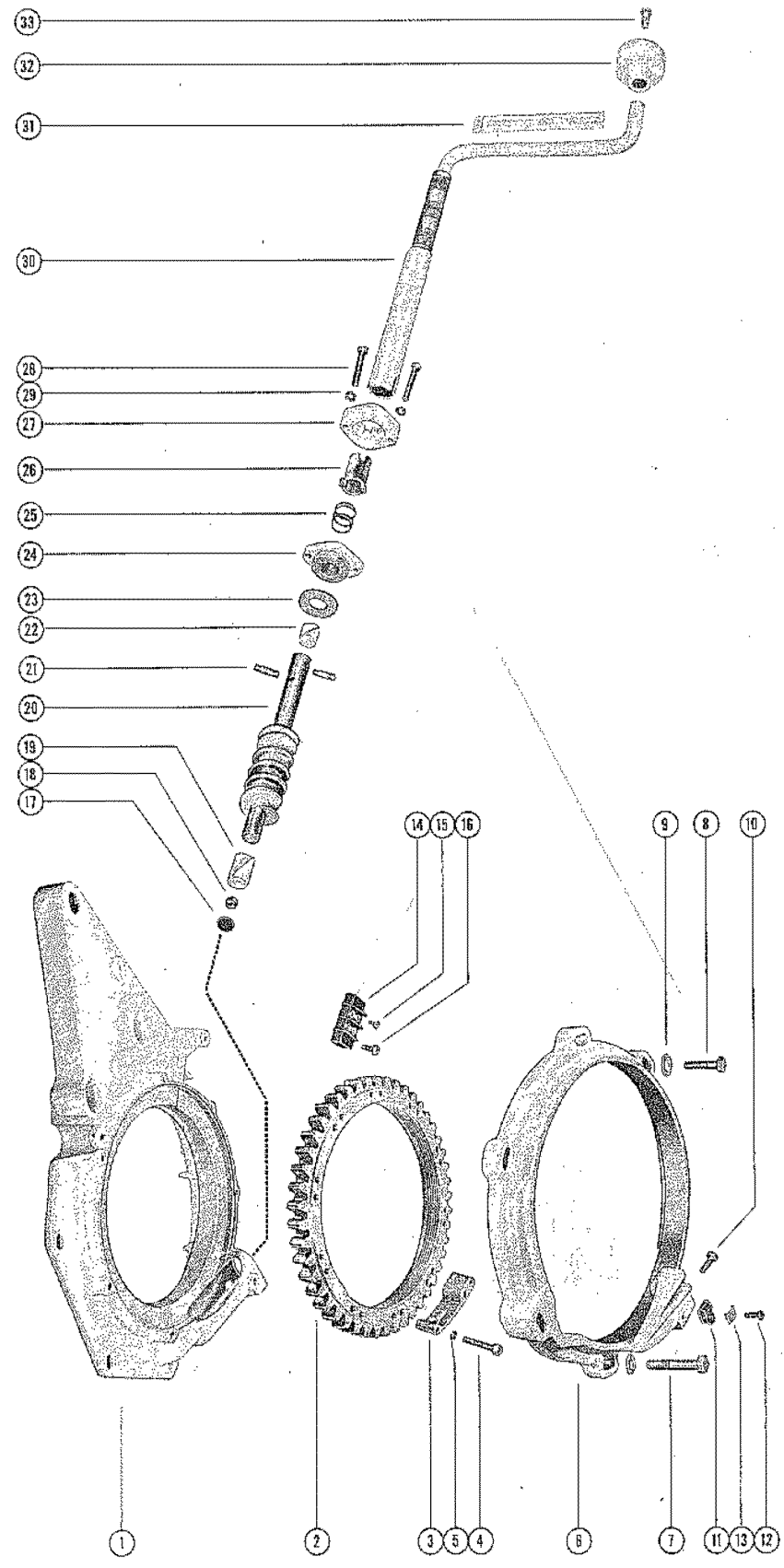
# INNER AND OUTER TRANSOM PLATE AND SHIFT ARM



# INNER AND OUTER TRANSOM PLATE AND SHIFT ARM

REF. NO.	PART NO.	SYM.	QTY.	DESCRIPTION
34	54-24836		1	CLIP, LOCK-IN LIMIT SWITCH LEADS TO INNER TRANSOM PLATE
35	10-32031		1	SCREW, LOCK-IN LIMIT SWITCH LEADS CLIP TO INNER TRANSOM PLAT
36	22789		1	"D" WASHER, LOCK-IN LIMIT SWITCH LEADS CLIP SCREW
37	39672A2		1	EXTENSION HARNESS ASSEMBLY, TILT SWITCH (QUICK DISCONNECT)
38	19-35684		1	WELCH PLUG, INNER TRANSOM PLATE
39	34214		1	ARM, SHIFT CABLE MOUNTING-STEERING BRACKET
40	23-31758		1	SPACER, SHIFT CABLE MOUNTING ARM STUD
41	16-30715		1	STUD, SHIFT CABLE MOUNTING ARM TO STEERING CABLE BRACKET
42	12-26825		2	WASHER, SHIFT CABLE MOUNTING ARM STUD
43	23-27818		1	SPACER, SHIFT CABLE MOUNTING ARM STUD
44	11-35814		1	NUT, SHIFT CABLE MOUNTING ARM STUD
45	10-22659		1	SCREW, SHIFT ACTUATING CABLE TO SHIFT CABLE ARM (1 5/8")
46	23-31866		1	SPACER, SHIFT ACTUATING CABLE SCREW
47	12-39143		2	WASHER, SHIFT ACTUATING CABLE SCREW
48	11-20361		1	NUT, SHIFT ACTUATING CABLE SCREW
49	10-22659		1	SCREW, SHIFT CABLE ASSEMBLY TO SHIFT CABLE ARM (1 5/8")
50	23-31866		1	SPACER, SHIFT CABLE ASSEMBLY SCREW
51	12-39143		2	WASHER, SHIFT CABLE ASSEMBLY SCREW
52	11-20361		1	NUT, SHIFT CABLE ASSEMBLY SCREW
53	32-35015		1	TUBE, STEERING CABLE GUIDE
54	11-35222		1	NUT, JAM-STEERING CABLE GUIDE TUBE
55	35221		1	RING, SWIVEL-CABLE GUIDE TUBE PIVOT YOKE
56	34125		1	YOKE, CABLE GUIDE TUBE PIVOT-STEERING CABLE BRACKET
57	10-31832		2	BOLT, PIVOT-PIVOT YOKE TO SWIVEL RING
58	13-31848		2	LOCKWASHER, PIVOT YOKE TO SWIVEL RING PIVOT BOLT
59	12-35683		1	WASHER, CABLE GUIDE PIVOT YOKE

# INNER TRANSOM PLATE, CLAMP NUT AND CRANK ASSEMBLY

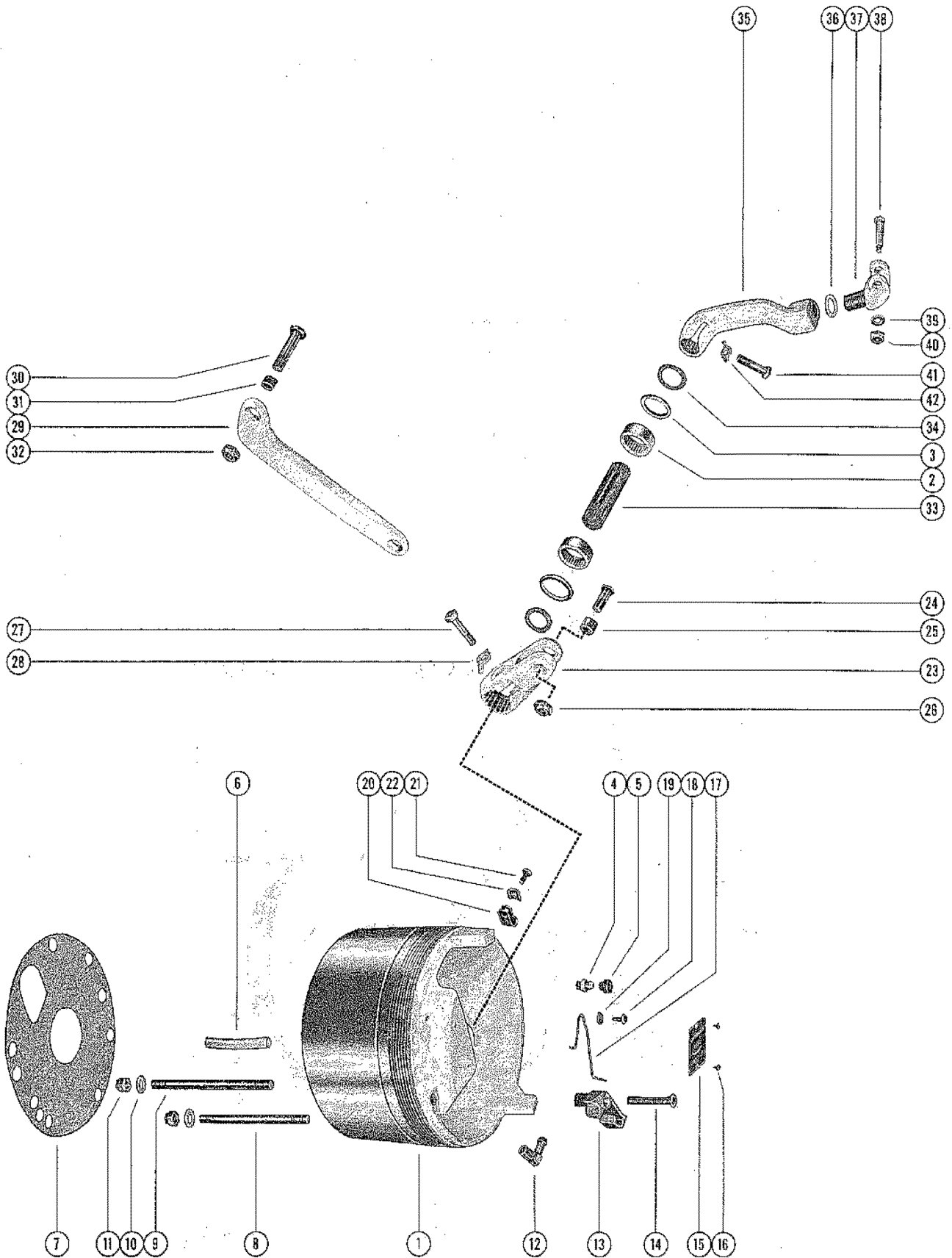




# INNER TRANSOM PLATE, CLAMP NUT AND CRANK ASSEMBLY

REF. NO.	PART NO.	SYM.	QTY.	DESCRIPTION
1	34193		1	PLATE, TRANSOM-INNER
2	32239		1	CLAMP NUT, STEERING LEVER HOUSING
3	33639		1	CATCH, CLAMP NUT
4	10-32759		3	SCREW, CATCH TO CLAMP NUT
5	13-21547		3	LOCKWASHER, CATCH TO CLAMP NUT SCREW
6	36287		1	COVER, CLAMP NUT-INNER TRANSOM PLATE
7	10-25503		1	SCREW, CLAMP NUT COVER TO INNER TRANSOM PLATE (2")
8	10-31984		5	SCREW, CLAMP NUT COVER TO INNER TRANSOM PLATE (1 3/8")
9	12-20103		6	WASHER, CLAMP NUT COVER SCREW
10	10-31983		1	SCREW, STEERING LEVER HOUSING STOP-CLAMP NUT COVER
11	54-24836		1	CLIP, TILT STOP SWITCH LEADS TO CLAMP NUT COVER
12	10-25764		1	SCREW, TILT STOP SWITCH LEADS CLIP TO CLAMP NUT COVER
13	22789		1	"D" WASHER, TILT STOP SWITCH LEADS CLIP SCREW
14	30212		1	TERMINAL BLOCK, INNER TRANSOM PLATE (NOT AS SHOWN)
15	10-30663		2	SCREW, TILT STOP SWITCH LEADS TO TERMINAL BLOCK
16	10-32024		2	SCREW, TERMINAL BLOCK TO INNER TRANSOM PLATE
17	32788		1	DISC, THRUST-WORM GEAR (LOWER)
18	22834		1	BALL, WORM GEAR (LOWER)
19	23-31757		1	BUSHING, NYLON-WORM GEAR (LOWER)
20	43-31605		1	GEAR, WORM-INNER TRANSOM PLATE
21	17-31728		2	PIN, WORM GEAR-SLEEVE AND CRANK LOCKING
22	23-31857		1	BUSHING, NYLON-WORM GEAR (UPPER)
23	12-31727		1	WASHER, THRUST-WORM GEAR TO RETAINING COVER (UPPER)
24	31631		1	COVER, RETAINING-WORM GEAR TO INNER TRANSOM PLATE
25	24-31729		1	SPRING, COMPRESSION-WORM GEAR LOCKING SLEEVE
26	23-31726		1	SLEEVE, WORM GEAR LOCKING
27	31730		1	LOCK, SPLINED-WORM GEAR LOCKING SLEEVE
28	10-21324		2	SCREW, WORM GEAR COVER AND LOCK TO INNER TRANSOM PLATE
29	23-26992		2	LOCKWASHER, WORM GEAR COVER AND LOCK SCREW
30	33923A10		OPT.	CRANK ASSEMBLY (10")
	33923A16		OPT.	CRANK ASSEMBLY (16")
	33923A22		1	CRANK ASSEMBLY (22")
	33923A28		OPT.	CRANK ASSEMBLY (28")
	33923A34		OPT.	CRANK ASSEMBLY (34")
31	37-32187		1	LABEL, DIRECTIONAL AND INSTRUCTIONAL-CRANK
32	31842		1	KNOB, CRANK
33	10-21356		1	SCREW, KNOB TO CRANK

# STEERING LEVER HOUSING ASSEMBLY

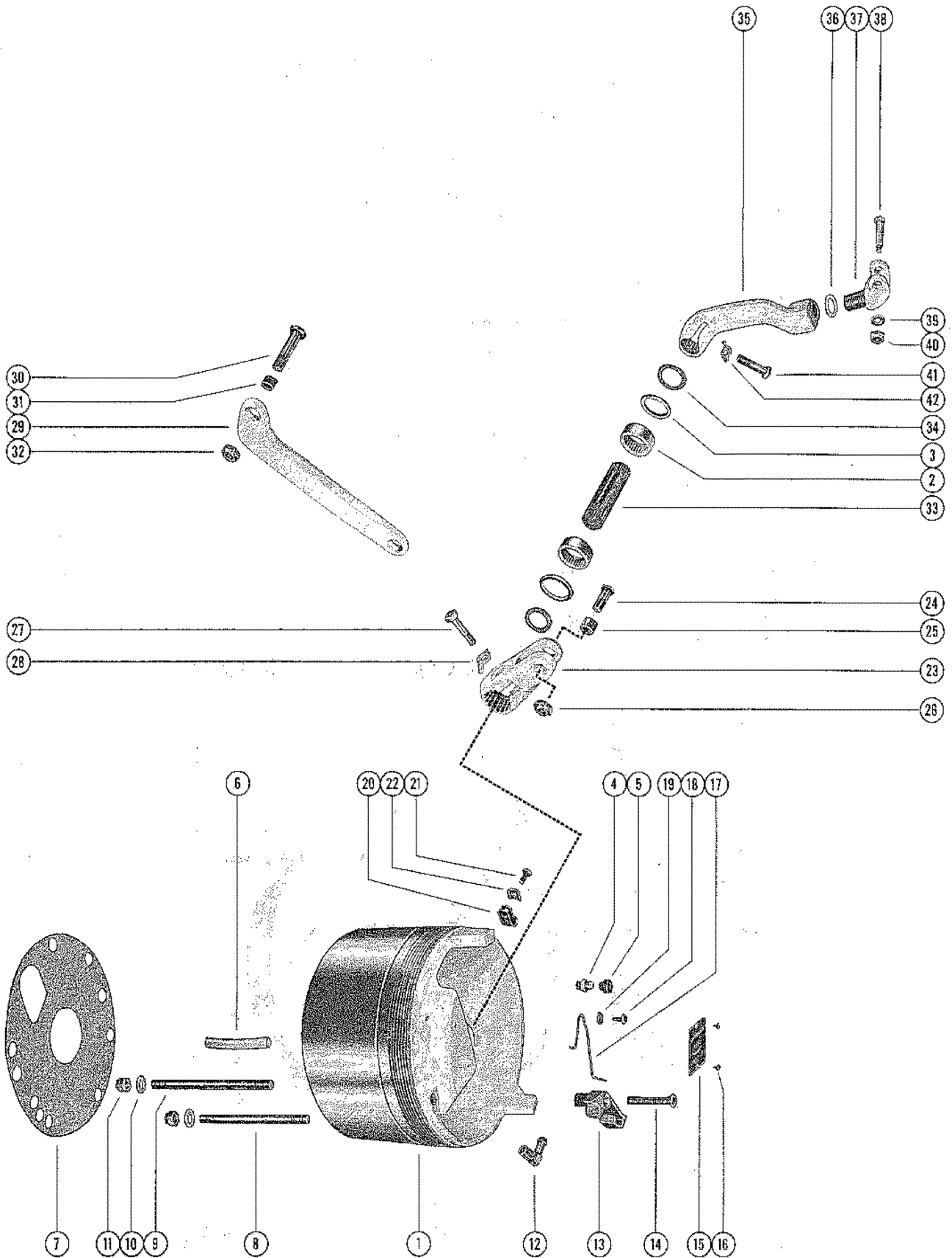


# STEERING LEVER HOUSING ASSEMBLY

REF. NO.	PART NO.	SYM.	QTY.	DESCRIPTION
1	32420A2		1	STEERING LEVER HOUSING ASSEMBLY
2	31-30457		2	BEARING, ROLLER-STEERING LEVER HOUSING
3	26-31851		2	OIL SEAL, STEERING LEVER HOUSING
4	22-23612		1	FITTING, GREASE-STEERING LEVER HOUSING
5	29359		1	LUBRICAP, STEERING LEVER HOUSING GREASE FITTING
6	32-31879		1	TUBE, NYLON-SHIFT ACTUATING CABLE GUIDE
7	27-32423		1	GASKET, STEERING LEVER HOUSING TO GIMBAL HOUSING
8	16-32422		1	STUD, STEERING LEVER HOUSING TO GIMBAL HOUSING (6 5/8")
9	16-32421		1	STUD, STEERING LEVER HOUSING TO GIMBAL HOUSING (7 1/4")
10	12-20959		2	WASHER, STEERING LEVER HOUSING STUD
11	11-28040		2	NUT, STEERING LEVER HOUSING STUD
12	22-25885		1	ELBOW, STEERING LEVER HOUSING
13	35249		1	LATCH, STEERING LEVER HOUSING
14	10-31972		1	SCREW, LATCH TO STEERING LEVER HOUSING
15	38-31042		2	SERIAL PLATE USE FROM SERIAL <b>SERIAL 01602186-01941218</b>
16	10-22290		2	SCREW, DRIVE-SERIAL PLATE ATTACHING <b>SERIAL 01602186-01941218</b>
	37-39395		1	DECAL, SERIAL NUMBER (STARTED WITH <b>SERIAL 01941219-02278488</b> )
17	24-34381		1	SPRING, TORSION-LATCH
18	10-29762		1	SCREW, TORSION SPRING TO STEERING LEVER HOUSING
19	12-28001		1	WASHER, TORSION SPRING SCREW
20	54-24836		1	CLIP, TILT STOP SWITCH LEADS TO STEERING LEVER HOUSING
21	10-32031		1	SCREW, TILT STOP SWITCH LEADS CLIP TO STEERING LEVER HOUSING
22	22789		1	"D" WASHER, TILT STOP SWITCH LEADS CLIP SCREW
23	34903		1	ARM, STEERING-LOWER
24	10-34954		1	BOLT, LINK ROD TO LOWER STEERING ARM (1 5/16")
25	23-31853		1	BUSHING, LINK ROD BOLT
26	11-31847		1	NUT, LINK ROD BOLT
27	10-31830		1	SCREW, LOWER STEERING ARM TO STEERING SHAFT (1 3/4")
28	14-31828		1	TAB WASHER, LOWER STEERING ARM SCREW
29	34009		1	LINK ROD, LOWER STEERING ARM TO GIMBAL RING
30	10-31846		1	BOLT, LINK ROD TO GIMBAL RING
31	23-31853		1	BUSHING, LINK ROD BOLT
32	11-31847		1	NUT, LINK ROD BOLT
33	31844		1	SHAFT, STEERING-STEERING LEVER HOUSING
34	12-31829		2	WASHER, NYLON-UPPER AND LOWER STEERING ARMS TO SHAFT
35	33775		1	ARM, STEERING-UPPER
36	12-35685		1	WASHER, UPPER STEERING ARM YOKE

CONTINUED ON NEXT PAGE ➡

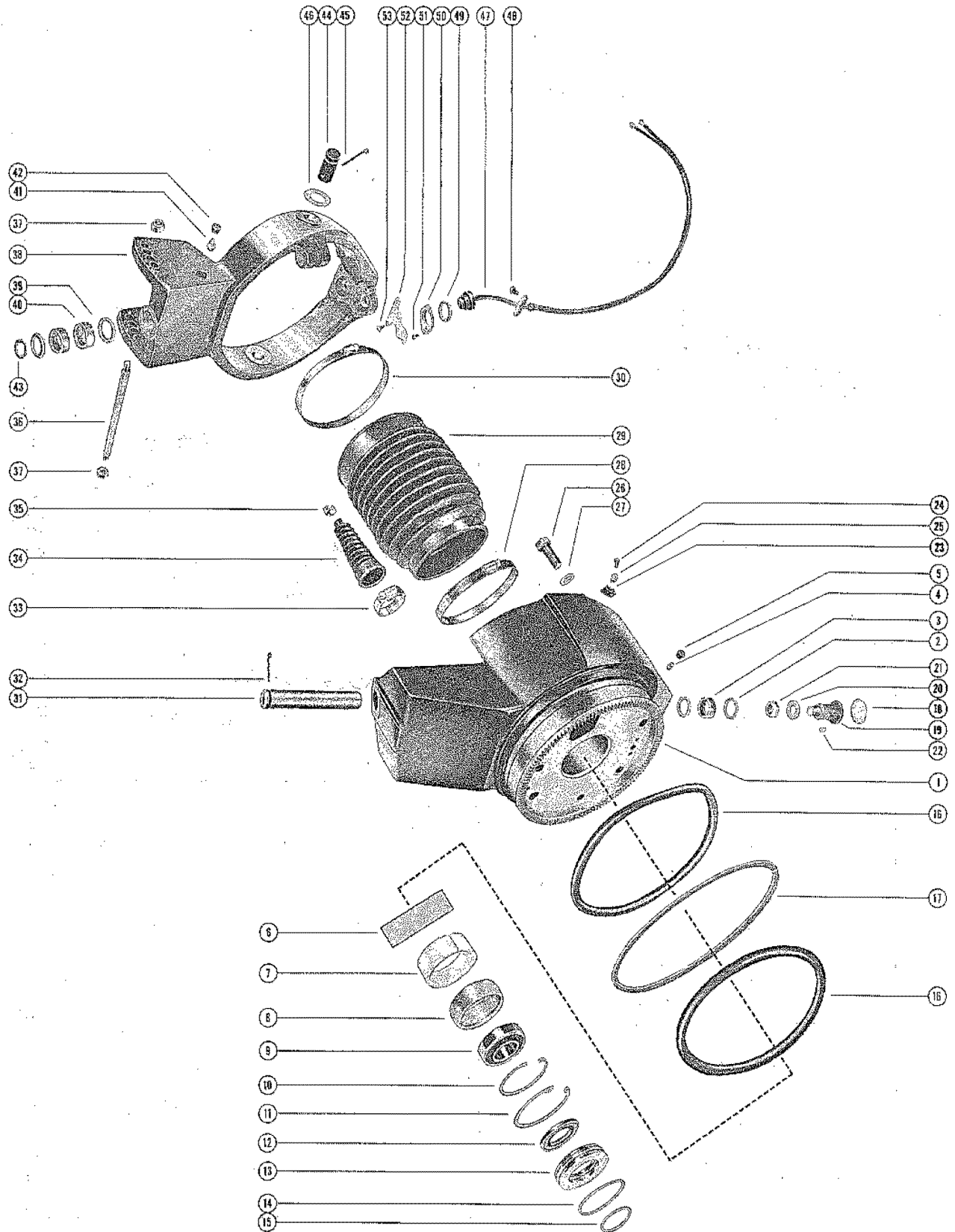
# STEERING LEVER HOUSING ASSEMBLY



# STEERING LEVER HOUSING ASSEMBLY

REF. NO.	PART NO.	SYM.	QTY.	DESCRIPTION
37	35096		1	YOKE, UPPER STEERING ARM
38	10-35095		1	SCREW, STEERING CABLE TO UPPER STEERING ARM YOKE
39	12-20084		1	WASHER, STEERING CABLE SCREW
40	11-20102		1	NUT, STEERING CABLE SCREW
41	10-31830		1	SCREW, UPPER STEERING ARM TO STEERING SHAFT (1 3/4")
42	14-31828		1	TAB WASHER, UPPER STEERING ARM SCREW
-	<b>37-33737</b>		<b>2</b>	<b>DECAL, NAME PLATE (POWERED BY MERCUISER DRIVE)</b>

# GIMBAL HOUSING AND GIMBAL RING ASSEMBLY

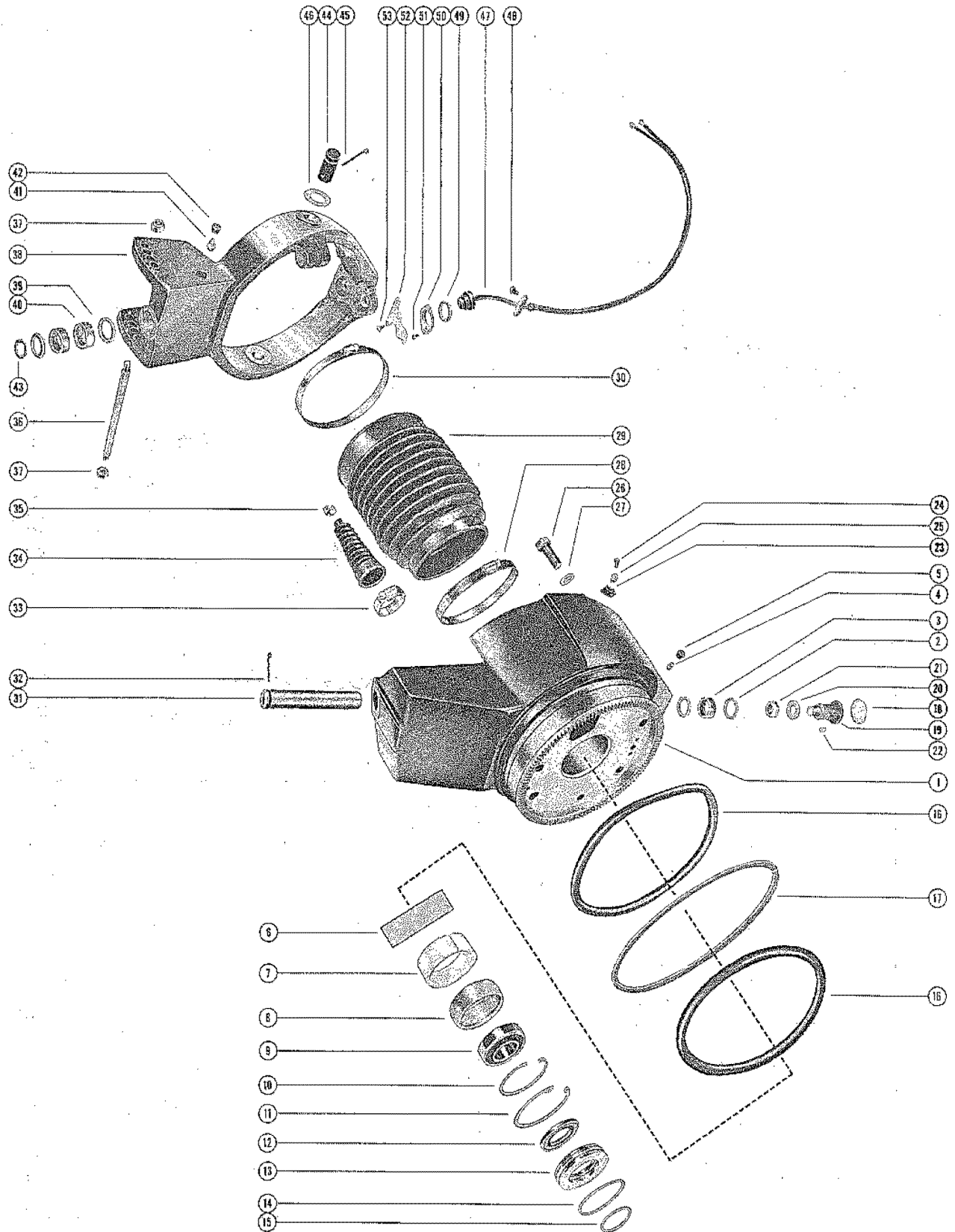


# GIMBAL HOUSING AND GIMBAL RING ASSEMBLY

REF. NO.	PART NO.	SYM.	QTY.	DESCRIPTION
1	32419A1		1	GIMBAL HOUSING ASSEMBLY <b>SERIAL 01602186-01732379</b>
	37267A1		1	GIMBAL HOUSING ASSEMBLY <b>SERIAL 01732380-02278488</b>
2	26-32911		2	OIL SEAL, GIMBAL HOUSING
3	31-31559		1	BEARING, ROLLER-GIMBAL HOUSING
4	22-31345		1	FITTING, GREASE-GIMBAL HOUSING
5	29359		1	LUBRICAP, GIMBAL HOUSING GREASE FITTING
6	15-35244A1		AR	SHIM, GIMBAL HOUSING BALL BEARING (.002-3-4-5-6-7-8-10)
7	23-35130		1	ADAPTOR, BALL BEARING
8	36147		1	CARRIER, BEARING-GIMBAL HOUSING BALL BEARING <b>SERIAL 01602186-01732379</b>
9	30-36056		1	BEARING, BALL-GIMBAL HOUSING <b>SERIAL 01602186-01732379</b>
10	53-35129		1	RING, RETAINING-BALL BEARING (SMALL) <b>SERIAL 01602186-01732379</b>
11	53-35128		1	RING, RETAINING-BALL BEARING (LARGE) <b>SERIAL 01602186-01732379</b>
12	26-36146		1	OIL SEAL, GIMBAL HOUSING ADAPTOR <b>SERIAL 01602186-01732379</b>
13	36144		1	ADAPTOR, GIMBAL HOUSING <b>SERIAL 01602186-01732379</b>
14	25-36145		1	"O" RING, GIMBAL HOUSING ADAPTOR (LARGE) <b>SERIAL 01602186-01732379</b>
9	30-36418		1	BEARING, BALL-GIMBAL HOUSING <b>SERIAL 01732380-02278488</b>
12	26-36143		1	GREASE SEAL, GIMBAL HOUSING ADAPTOR <b>SERIAL 01732380-02278488</b>
13	37250		1	ADAPTOR, GIMBAL HOUSING <b>SERIAL 01732380-02278488</b>
14	25-31305		1	"O" RING, GIMBAL HOUSING ADAPTOR (LARGE) <b>SERIAL 01732380-02278488</b>
15	25-32424		1	"O" RING, GIMBAR HOUSING ADAPTOR (SMALL)
16	31635		2	SEAL, RUBBER-GIMBAL HOUSING TO OUTER TRANSOM PLATE
17	12-31653		1	WASHER, SEPARATING-GIMBAL HOUSING TO OUTER TRANSOM PLATE
18	19-31843		1	WELCH PLUG, UPPER PIVOT BOLT COVER-GIMBAL HOUSING
19	10-31628		1	BOLT, PIVOT-GIMBAL RING (UPPER)
20	12-36362		1	WASHER, UPPER PIVOT BOLT
21	11-22339		1	NUT, UPPER PIVOT BOLT
22	17-31627		1	PIN, UPPER PIVOT BOLT LOCKING
23	54-24836		1	CLIP, TILT STOP SWITCH LEADS TO GIMBAL HOUSING
24	10-31903		1	SCREW, TILT STOP SWITCH LEADS CLIP TO GIMBAL HOUSING (3/8")
25	22789		1	"D" WASHER, TILT STOP SWITCH LEADS CLIP SCREW
26	10-31877		4	SCREW, GIMBAL HOUSING TO STEERING LEVER HOUSING (1 1/2")
27	12-20959		4	WASHER, GIMBAL HOUSING SCREW

CONTINUED ON NEXT PAGE ➡

# GIMBAL HOUSING AND GIMBAL RING ASSEMBLY

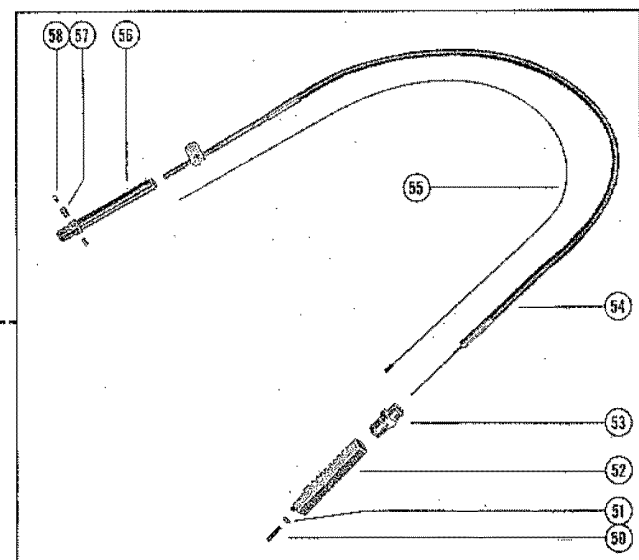
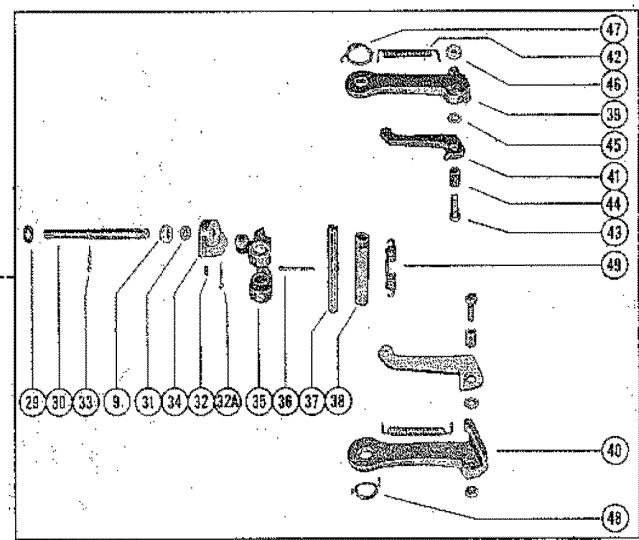
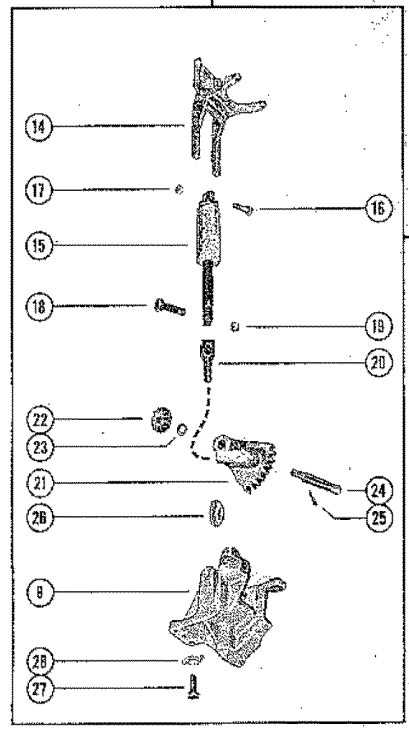
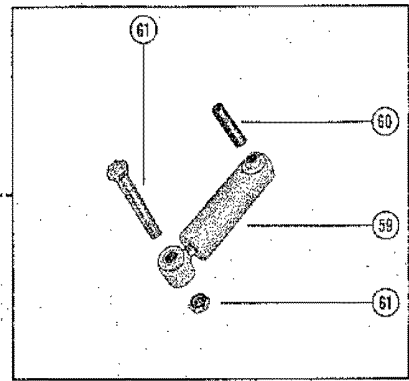
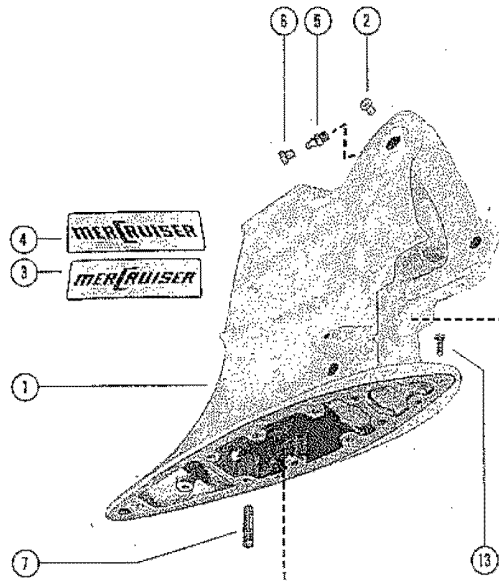




# GIMBAL HOUSING AND GIMBAL RING ASSEMBLY

REF. NO.	PART NO.	SYM.	QTY.	DESCRIPTION
28	54-31765		1	CLAMP, UNIVERSAL JOINT BELLOWS TO GIMBAL HOUSING (SMALL)
29	34088		1	BELLOWS, UNIVERSAL JOINT COVERING
30	54-31767		1	CLAMP, UNIVERSAL JOINT BELLOWS TO DRIVE SHAFT HOUSING (LARGE)
31	17-31634		1	PIN, SWIVEL-GIMBAL HOUSING TO GIMBAL RING (LOWER)
32	18-36377		1	COTTER PIN, RETAINING-LOWER SWIVEL PIN
33	54-31766		1	CLAMP, SHIFT ACTUATING CABLE BELLOWS TO GIMBAL HOUSING
34	31659		1	BELLOWS, SHIFT ACTUATING CABLE COVER
35	54-20386		1	CLAMP, SHIFT ACTUATING CABLE BELLOWS TO SHIFT ACTUATING CABL
36	17-35997		1	PIN, TILT ADJUSTMENT-GIMBAL RING
37	11-34932		2	NUT, TILT ADJUSTMENT PIN
38	35600A2		1	GIMBAL RING ASSEMBLY <b>SERIAL 01602186-01732325</b>
	37288A1		1	GIMBAL RING ASSEMBLY <b>SERIAL 01732326-01922479</b>
	38779A1		1	GIMBAL RING ASSEMBLY <b>SERIAL 01922480-02278488</b>
39	26-32911		2	OIL SEAL, GIMBAL RING
40	31-31559		2	BEARING, ROLLER-GIMBAL RING
41	22-23612		1	FITTING, GREASE-GIMBAL RING
42	29359		1	LUBRICAP, GIMBAL RING GREASE FITTING
43	12-31581		3	WASHER, GIMBAL RING TO GIMBAL HOUSING
44	17-35601		2	PIN, HINGE-GIMBAL RING TO DRIVE SHAFT HOUSING
45	18-34212		2	COTTER PIN, HINGE PIN RETAINING-GIMBAL RING
46	12-31633		2	WASHER, GIMBAL RING HINGE PIN <b>SERIAL 01602186-01778953</b>
	12-38334		2	WASHER, SYNTHANE-GIMBAL RING HINGE PIN <b>SERIAL 01778954-02278488</b>
47	32676A1		1	TILT STOP SWITCH ASSEMBLY, GIMBAL RING
48	10-20031		2	SCREW, TILT STIP SWITCH COVER TO GIMBAL HOUSING (1/2")
49	23-31902		1	SPACER, TILT STOP SWITCH TO RETAINING PLATE
50	31899		1	PLATE, RETAINING-TILT STOP SWITCH TO GIMBAL RING
51	10-31903		2	SCREW, RETAINING PLATE TO GIMBAL RING (3/8")
52	31897		1	LEVER, TILT STOP SWITCH ACUTATING-GIMBAL RING
53	10-31903		2	SCREW, TILT STIP SWITCH ACTUATING LEVER TO GIMBAL RING (3/8")

# DRIVE SHAFT HOUSING AND REVERSE LOCK

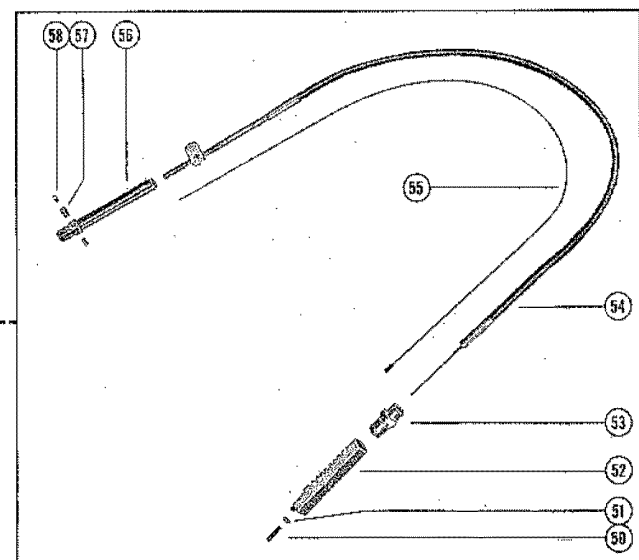
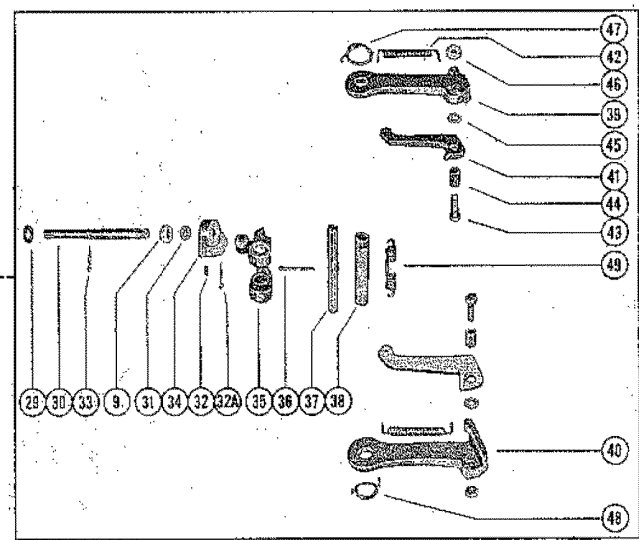
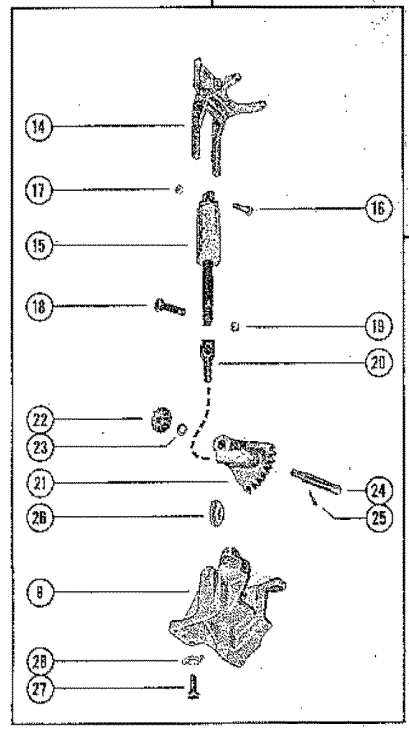
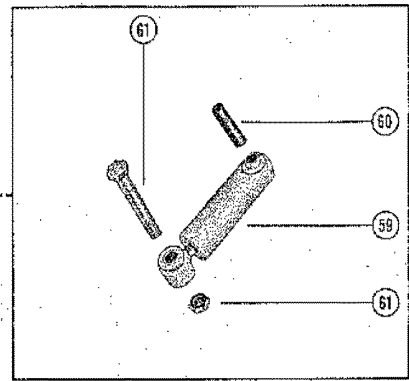
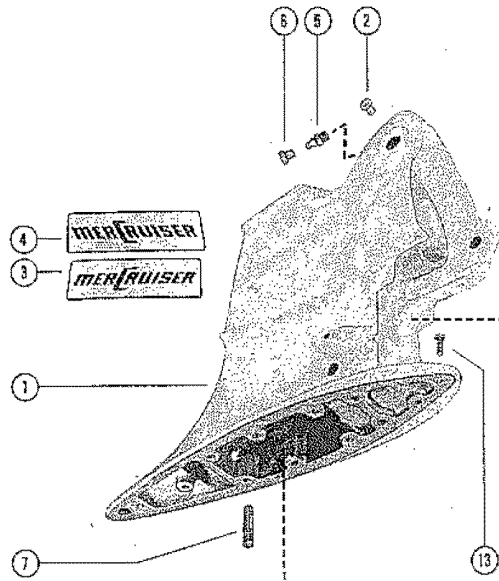


# DRIVE SHAFT HOUSING AND REVERSE LOCK

REF. NO.	PART NO.	SYM.	QTY.	DESCRIPTION
1	1544-2008A9		1	DRIVE SHAFT HOUSING ASSEMBLY SERIAL 01602186-01732325
	1544-2444A3		1	DRIVE SHAFT HOUSING ASSEMBLY SERIAL 01732326-01778953
	1544-2549A4		1	DRIVE SHAFT HOUSING ASSEMBLY SERIAL 01778954-01941218
	1544-2549A11		1	DRIVE SHAFT HOUSING ASSEMBLY SERIAL 01941219-02278488
2	23-38335		2	BUSHING, SYNTHANE-DRIVE SHAFT HOUSING SERIAL 01778954-02278488
3	37-32431		1	DECAL, DRIVE SHAFT HOUSING-STARBOARDUSE SERIAL 01602186-01941218
4	37-32432		1	DECAL, DRIVE SHAFT HOUSING-PORT SERIAL 01602186-01941218
3&4	37-39428A1		1	DECAL SET, DRIVE SHAFT HOUSING SERIAL 01941219-02278488
5	22-31345		2	FITTING, GREASE-DRIVE SHAFT HOUSING
6	29359		2	LUBRICAP, DRIVE SHAFT HOUSING GREASE FITTING
7	16-32129		8	STUD, DRIVE SHAFT HOUSING TO GEAR HOUSING
8	31655		1	GUIDE, GEAR RACK-DRIVE SHAFT HOUSING
9	26-31249		1	OIL SEAL, REVERSE LOCK ACTUATING CAM SHAFT-DRIVE HOUSING
10	34057A1		1	EYE ASSEMBLY, SHIFT ACTUATING CABLE GUIDE
11	23-34058		1	SPACER, SHIFT ACTUATING CABLE GUIDE EYE
12	11-34059		1	NUT, SHIFT ACTUATING CABLE GUIDE EYE
13	10-28668		3	SCREW, DRIVE SHAFT HOUSING TO GEAR HOUSING
14	35179		1	FORK, SHIFT-SLIDING CLUTCH ACTUATING
15	35181A1		1	SHIFT LINK ASSEMBLY, DRIVE SHAFT HOUSING
16	10-31856		1	SCREW, SHIFT LINK TO SHIFT FORK (1")
17	11-20664		1	NUT, SHIFT LINK SCREW
18	10-36285		1	SCREW, SHIFT LINK TO YOKE (3/4")
19	11-20061		1	NUT, SHIFT LINK SCREW
20	35180		1	YOKE, SHIFT LINK TO SECTOR GEAR
21	43-35178		1	GEAR, SECTOR-GEAR RACK GUIDE
22	43-31719		1	GEAR, REVERSE LOCK-SECTOR GEAR PIVOT SHAFT
23	12-30283		1	WASHER, SECTOR GEAR PIVOT SHAFT
24	31722		1	SHAFT, SPLINED-SECTOR GEAR PIVOT
25	18-20180		1	COTTER PIN, SECTOR GEAR PIVOT SHAFT
26	43-31719		1	GEAR, REVERSE LOCK ACTUATING CAM SHAFT
27	10-32124		4	SCREW, GEAR RACK TO DRIVE SHAFT HOUSING (7/8")
28	14-31651		4	TAB WASHER, GEAR RACK GUIDE SCREW
29	12-29629		1	WASHER, REVERSE LOCK ACTUATING CAM SHAFT
30	31647		1	SHAFT, SPLINED-REVERSE LOCK ACTUATING SERIAL 01602186-01778953
31	12-29395		1	WASHER, REVERSE LOCK ACTUATING CAM SHAFT SERIAL 01602186-01778953

CONTINUED ON NEXT PAGE ➡

# DRIVE SHAFT HOUSING AND REVERSE LOCK

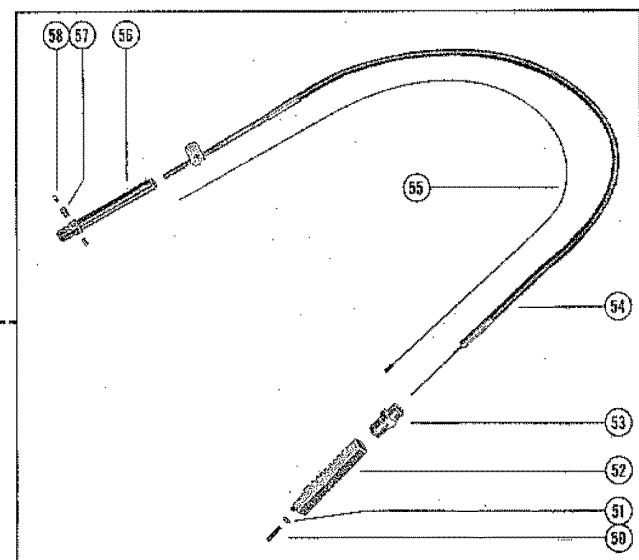
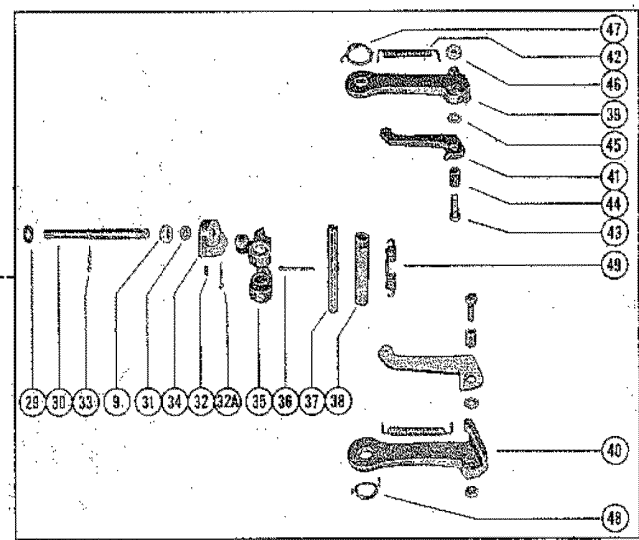
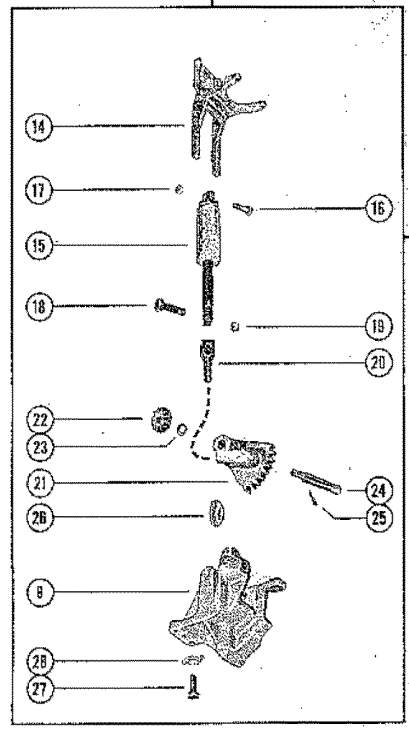
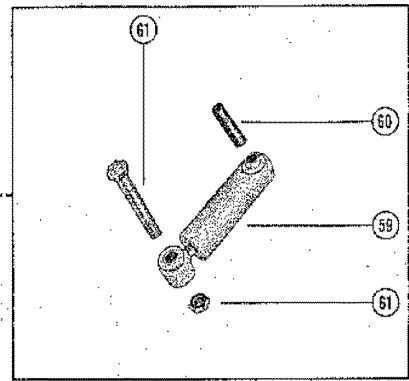
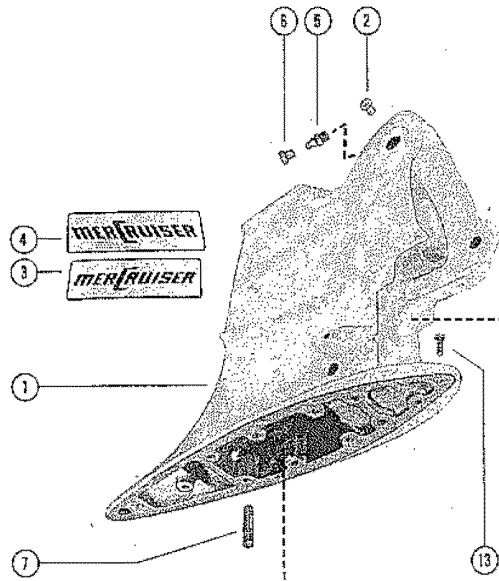


## DRIVE SHAFT HOUSING AND REVERSE LOCK

REF. NO.	PART NO.	SYM.	QTY.	DESCRIPTION
32	10-31685		1	SCREW, SET-CAM TO ACTUATING CAM SHAFT <b>SERIAL 01602186-01778953</b>
30	38329A1		1	SHAFT ASSEMBLY, REVERSE LOCK ACTUATING <b>SERIAL 01778954-02278488</b>
31	12-29395		2	WASHER, REVERSE LOCK ACTUATING CAM SHAFT (1/16") <b>SERIAL 01778954-02278488</b>
	12-38344		2	WASHER, REVERSE LOCK ACTUATING CAM SHAFT (1/32") <b>SERIAL 01778954-02278488</b>
32A	18-20209		1	COTTER PIN, CAM TO ACTUATING CAM SHAFT <b>SERIAL 01778954-02278488</b>
33	18-31839		1	COTTER PIN, REVERSE LOCK ACTUATING CAM SHIFT
34	34618		1	CAM, REVERSE LOCKING ACTUATING
35	36214A1		1	STOP ASSEMBLY, REVERSE LOCK
36	18-45882		1	COTTER PIN, REVERSE LOCK PIVOT SHAFT AND TUBE
37	31652		1	SHAFT, PIVOT-REVERSE LOCK
38	36213		1	TUBE, REVERSE LOCK PIVOT SHAFT
39	34157		1	ARM, REVERSE LOCK-RIGHT <b>SERIAL 01602186-01778953</b>
40	34158		1	ARM, REVERSE LOCK-LEFT <b>SERIAL 01602186-01778953</b>
41	31955		2	HOOK, REVERSE LOCK-RIGHT AND LEFT <b>SERIAL 01602186-01778953</b>
42	24-34011		2	SPRING, TENSION-REVERSE LOCK HOOK TO REVERSE LOCK ARM <b>SERIAL 01602186-01778953</b>
39	38383		1	ARM, REVERSE LOCK-RIGHT <b>SERIAL 01778954-02278488</b>
40	38381		1	ARM, REVERSE LOCK-LEFT <b>SERIAL 01778954-02278488</b>
41	38382		2	HOOK, REVERSE LOCK-RIGHT AND LEFT <b>SERIAL 01778954-02278488</b>
42	24-38373		4	SPRING, TENSION-REVERSE LOCK HOOK TO REVERSE LOCK ARM <b>SERIAL 01778954-02278488</b>
43	10-32155		2	SCREW, REVERSE LOCK HOOK TO REVERSE LOCK ARM (1")
44	23-31962		2	SPACER, REVERSE LOCK HOOK SCREW
45	12-36001		2	WASHER, REVERSE LOCK HOOK SCREW
46	11-33825		2	NUT, REVERSE LOCK HOOK SCREW
47	24-34210		1	SPRING, TORSION-REVERSE LOCK ARM TO STOP ASSEMBLY (RIGHT)
48	24-34211		1	SPRING, TORSION-REVERSE LOCK ARM TO STOP ASSEMBLY (LEFT)
49	24-34154		1	SPRING, TENSION-REVERSE LOCK ARM TO REVERSE LOCK ARM
50	10-31700		1	SCREW, SET-SHIFT ACTUATING CABLE TO GEAR RACK
51	12-31690		1	WASHER, SHIFT ACTUATING CABLE-GEAR RACK <b>SERIAL 01602186-01778953</b>
52	31573		1	RACK, GEAR-SHIFT ACTUATING CABLE
53	22-32125		1	CONNECTOR, SHIFT ACTUATING CABLE
54	31720A1		1	CABLE ASSEMBLY, SHIFT ACTUATING
-	<b>12-39279</b>		<b>1</b>	<b>WASHER, LEATHER-SHIFT ACTUATING CABLE</b>
55	33075A1		1	CORE WIRE AND ANCHOR ASSEMBLY, SHIFT ACTUATING CABLE (INNER)

CONTINUED ON NEXT PAGE ➡

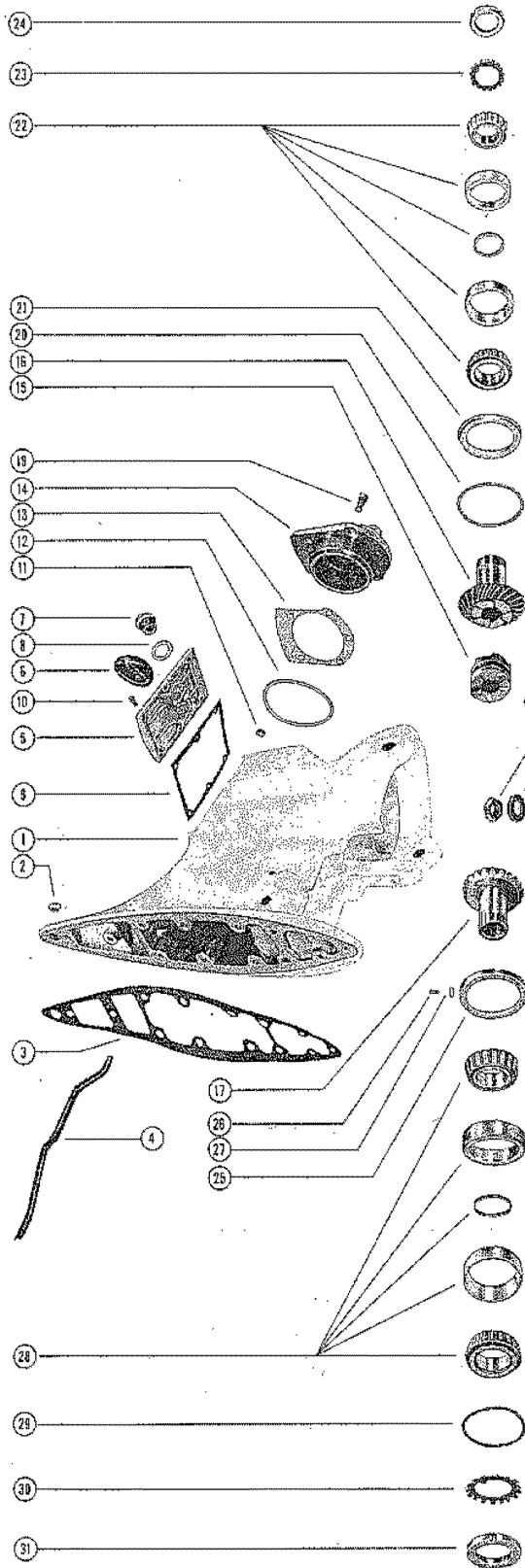
# DRIVE SHAFT HOUSING AND REVERSE LOCK



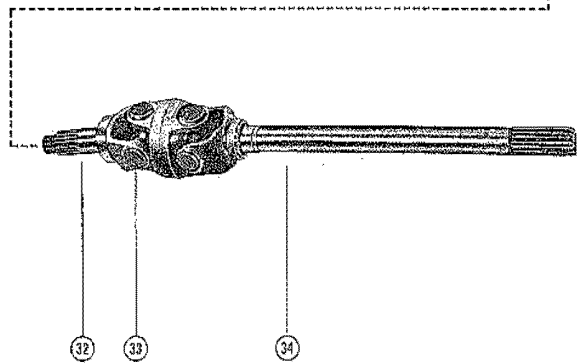
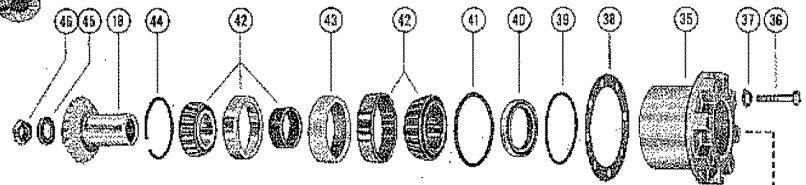
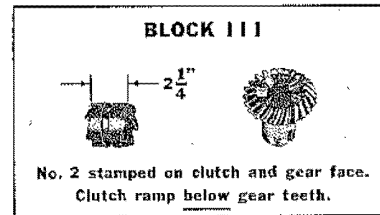
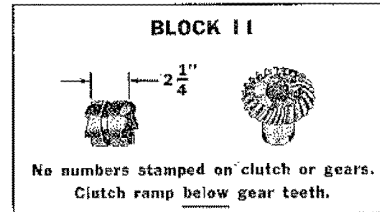
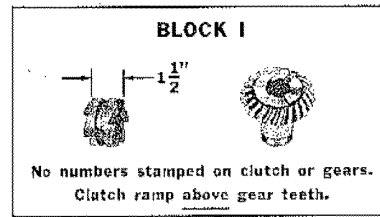
## DRIVE SHAFT HOUSING AND REVERSE LOCK

REF. NO.	PART NO.	SYM.	QTY.	DESCRIPTION
56	29880		1	GUIDE, SHIFT ACTUATING CABLE END
57	20007		1	ANCHOR, SHIFT ACTUATING CABLE END
58	10-20518		2	SCREW, SET-ANCHOR TO SHIFT ACTUATING CABLE END
59	55-31689		1	SHOCK ABSORBER
60	17-31630		1	PIN, UPPER-SHOCK ABSORBER TO GIMBAL RING
61	10-32196		1	BOLT, LOWER-SHOCK ABSORBER TO DRIVE SHAFT HOUSING (4 5/8")
62	11-22339		1	NUT, LOWER SHOCK ABSORBER BOLT

# DRIVE SHAFT HOUSING ASSEMBLY AND GEAR ASSEMBLY



## VISUAL IDENTIFICATION OF GEARS AND CLUTCH



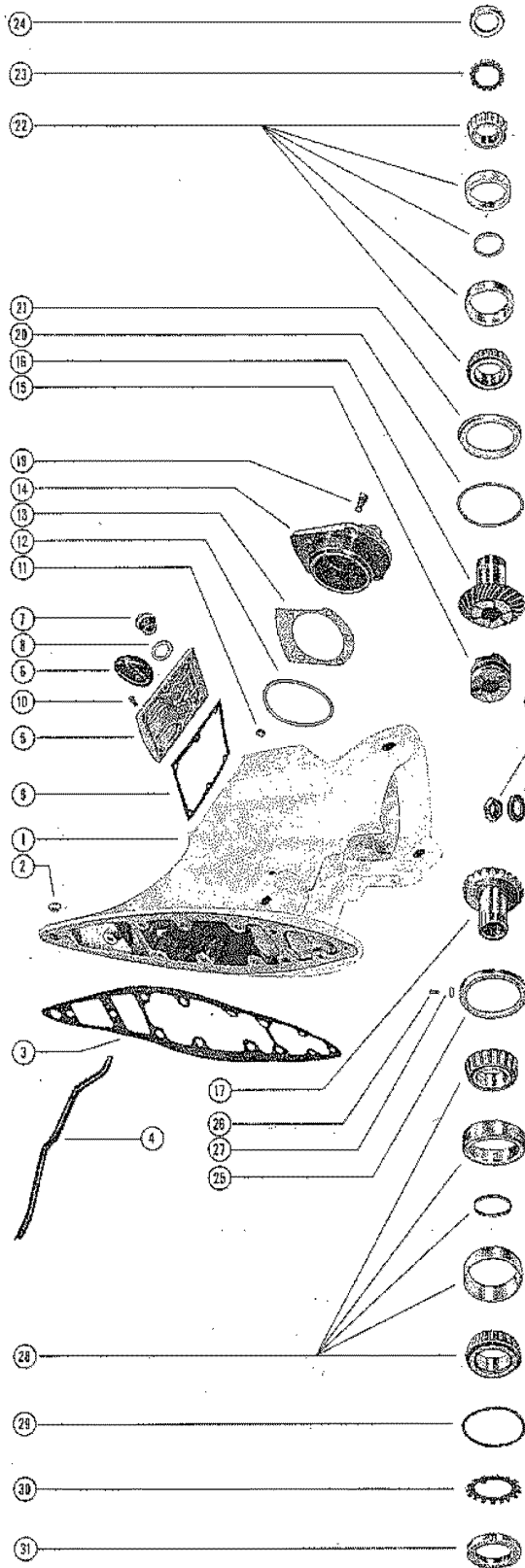


# DRIVE SHAFT HOUSING ASSEMBLY AND GEAR ASSEMBLY

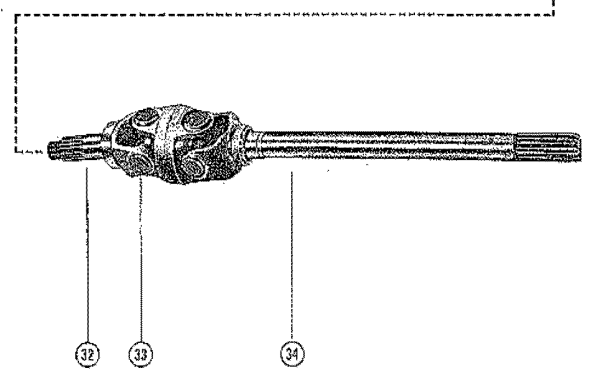
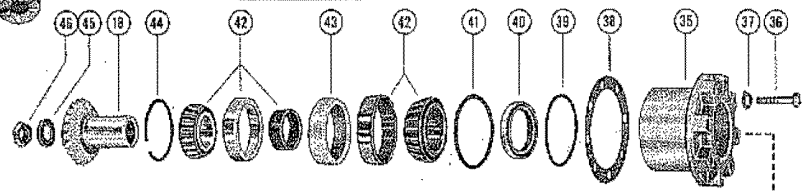
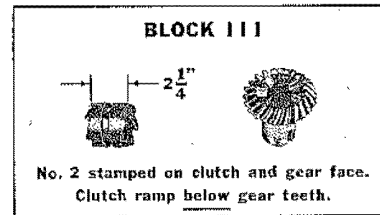
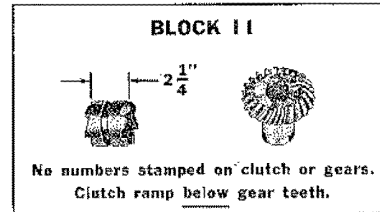
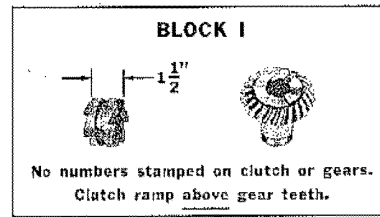
REF. NO.	PART NO.	SYM.	QTY.	DESCRIPTION
1	1544-2008A9		1	DRIVE SHAFT HOUSING ASSEMBLY SEE B14 FOR <b>BREAKDOWN SERIAL 01602186-01732325</b>
	1544-2444A3		1	DRIVE SHAFT HOUSING ASSEMBLY SEE B14 FOR <b>BREAKDOWN SERIAL 01732326-01778953</b>
	1544-2549A4		1	DRIVE SHAFT HOUSING ASSEMBLY SEE B14 FOR <b>BREAKDOWN SERIAL 01778954-01941218</b>
	1544-2549A11		1	DRIVE SHAFT HOUSING ASSEMBLY SEE B14 FOR <b>BREAKDOWN SERIAL 01941219-02278488</b>
2	19-29850		1	PLUG, TRIM TAB HOLE-DRIVE SHAFT HOUSING
3	27-32277		1	GASKET, DRIVE SHAFT HOUSING TO GEAR HOUSING
4	32-35127		1	TUBE, OIL-DRIVE SHAFT HOUSING
5	35231A1		1	COVER ASSEMBLY, SHIFT FORK
6	26183A1		1	EMBLEM ASSEMBLY, SHIFT FORK COVER
7	22-32018		1	PLUG, OIL FILLER-SHIFT FORK COVER
8	25-35126		1	RING, OIL FILLER PLUG
9	27-32366		1	GASKET, SHIFT FORK COVER
10	10-31716		6	SCREW, SHIFT FORK COVER TO DRIVE SHAFT HOUSING (5/8")
11	22-20025		1	PLUG, PIPE-OIL CHANNEL-DRIVE SHAFT HOUSING
12	25-32068		1	"O" RING, TOP COVER SEALING
13	15-32363A1		AR	SHIM, TOP COVER TO DRIVE SHAFT HOUSING (.002-3-5-10)
14	34949		1	COVER, TOP-DRIVE SHAFT HOUSING <b>SEE BLOCK I ON C1 SERIAL 01602186-01732445</b>
15	52-35176		1	CLUTCH, SLIDING-SHIFT FORK <b>SEE BLOCK I ON C1 SERIAL 01602186-01732445</b>
16&17	43-32261		2	GEAR, UPPER AND LOWER <b>SEE BLOCK I ON C1 SEE BLOCK I ON C1 SERIAL 01602186-01732445</b>
18	43-32260		1	GEAR, PINION-UNIVERSAL JOINT <b>SEE BLOCK I ON C1 SERIAL 01602186-01732445</b>
14	32367		1	COVER, TOP-DRIVE SHAFT HOUSING <b>SEE BLOCK II ON C1 SERIAL 01732445-01922465</b>
15	52-37239		1	CLUTCH, SLIDING-SHIFT FORK <b>SEE BLOCK II ON C1 SEE BLOCK II ON C1 SERIAL 01732445-01922465</b>
16 & 1	43-37238A2		1	GEAR ASSEMBLY, COMPLETE (INCLUDES FORWARD AND PINION GEAR) <b>SEE BLOCK II ON C1 SERIAL 01732445- 01922465</b>
17	43-37238		1	GEAR, REVERSE <b>SEE BLOCK II ON C1 SERIAL 01732445- 01922465</b>
14	32367		1	COVER, TOP-DRIVE SHAFT HOUSING <b>SEE BLOCK III ON C1 SERIAL 01922466-02278488</b>
15	52-39322		1	CLUTCH, SLIDING-SHIFT FORK <b>SEE BLOCK III ON C1 SEE BLOCK III ON C1 SERIAL 01922466-02278488</b>
16 & 1	43-39377A2		1	GEAR ASSEMBLY, COMPLETE (INCLUDES FORWARD AND PINION GEAR) <b>SEE BLOCK III ON C1 SERIAL 01922466- 02278488</b>
17	43-39321		1	GEAR, REVERSE <b>SEE BLOCK III ON C1 SERIAL 01922466- 02278488</b>
19	10-31985		5	SCREW, TOP COVER TO DRIVE SHAFT HOUSING (1 1/4")

CONTINUED ON NEXT PAGE ➡

# DRIVE SHAFT HOUSING ASSEMBLY AND GEAR ASSEMBLY



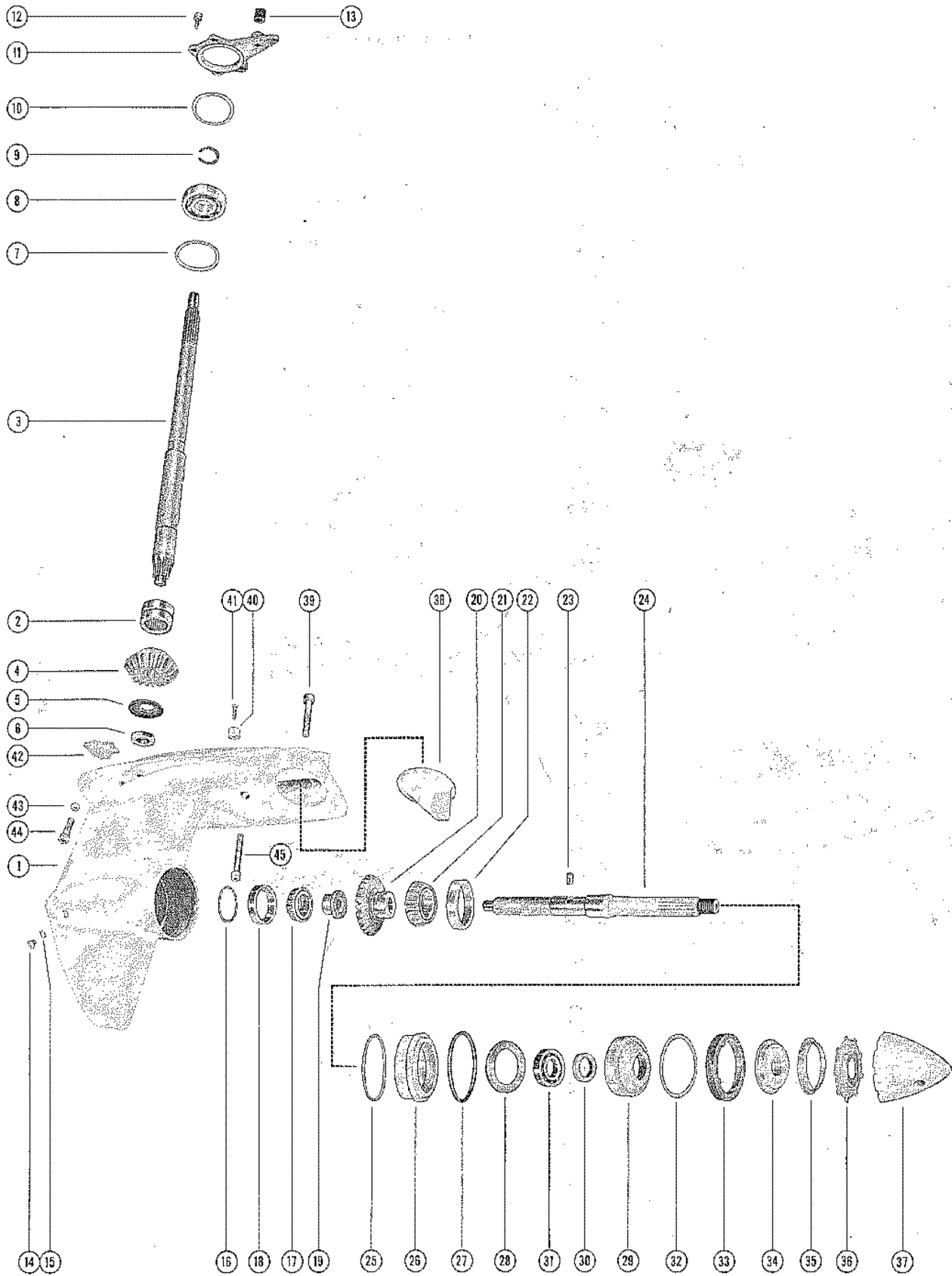
## VISUAL IDENTIFICATION OF GEARS AND CLUTCH



# DRIVE SHAFT HOUSING ASSEMBLY AND GEAR ASSEMBLY

REF. NO.	PART NO.	SYM.	QTY.	DESCRIPTION
20	15-32061A1		AR	SHIM, WASHER TO DRIVE SHAFT HOUSING (.002-3-5-10-25)
21	12-32161		1	WASHER, UPPER GEAR TAPERED ROLLER BEARING
22	31-30894A4		1	TAPERED ROLLER BEARING ASSEMBLY, UPPER GEAR
23	14-32054		1	TAB WASHER, TAPERED ROLLER BEARING TO UPPER GEAR NUT
24	11-32060		1	NUT, TAPERED ROLLER BEARING TO UPPER GEAR
25	32087		1	RETAINER, LOWER GEAR TAPERED ROLLER BEARING CUP
26	10-36375		2	SCREW, SET-TAPERED ROLLER BEARING CUP RETAINER
27	11-26484		2	NUT, JAM-TAPERED ROLLER BEARING CUP RETAINER SET SCREW
28	31-30894A4		1	TAPERED ROLLER BEARING ASSEMBLY, LOWER GEAR
29	15-32057A1		AR	SHIM, BEARING CUP TO DRIVE SHAFT HOUSING (.002-3-5-10-25)
30	14-32054		1	TAB WASHER, TAPERED ROLLER BEARING TO LOWER GEAR NUT
31	11-32060		1	NUT, TAPERED ROLLER BEARING TO LOWER GEAR
32	36013		1	UNIVERSAL JOINT ASSEMBLY, PINION GEAR
33	36312		2	CROSS AND BEARING ASSEMBLY, UNIVERSAL JOINT
34	39496		1	YOKE, UNIVERSAL JOINT (COUPLING END)
-	<b>39495</b>		<b>1</b>	<b>YOKE, UNIVERSAL JOINT (GEAR END)</b>
-	<b>39383</b>		<b>1</b>	<b>SOCKET, CENTER-UNIVERSAL JOINT</b>
35	31576		1	RETAINER, PINION GEAR ROLLER BEARING
36	10-32132		8	SCREW, RETAINER TO DRIVE SHAFT HOUSING (1 3/4")
37	14-31828		8	TAB WASHER, RETAINER SCREW
38	15-32062A1		AR	SHIM, RETAINER TO DRIVE SHAFT HOUSING (.002-3-5-10-25)
39	25-32069		1	"O" RING, ROLLER BEARING RETAINER
40	26-36054		1	OIL SEAL, ROLLER BEARING RETAINER
41	15-32057A1		AR	SHIM, ROLLER BEARING CUP TO RETAINER (.002-3-5-10-25)
42	31-30894A3		1	TAPERED ROLLER BEARING ASSEMBLY, PINION GEAR
43	23-32066		1	SPACER, PINION GEAR ROLLER BEARING CUPS
44	53-32185		1	RING, RETAINING - PINION GEAR ROLLER CUP TO RETAINER
45	12-32073		1	WASHER, PINION GEAR TO UNIVERSAL JOINT NUT
46	11-30499		1	NUT, PINION GEAR TO UNIVERSAL JOINT
	92-27109--1		1	ADHESIVE COMPOUND (3 1/2 UNCE KIT), EMBLEM FASTENING

# GEAR HOUSING ASSEMBLY, COMPLETE

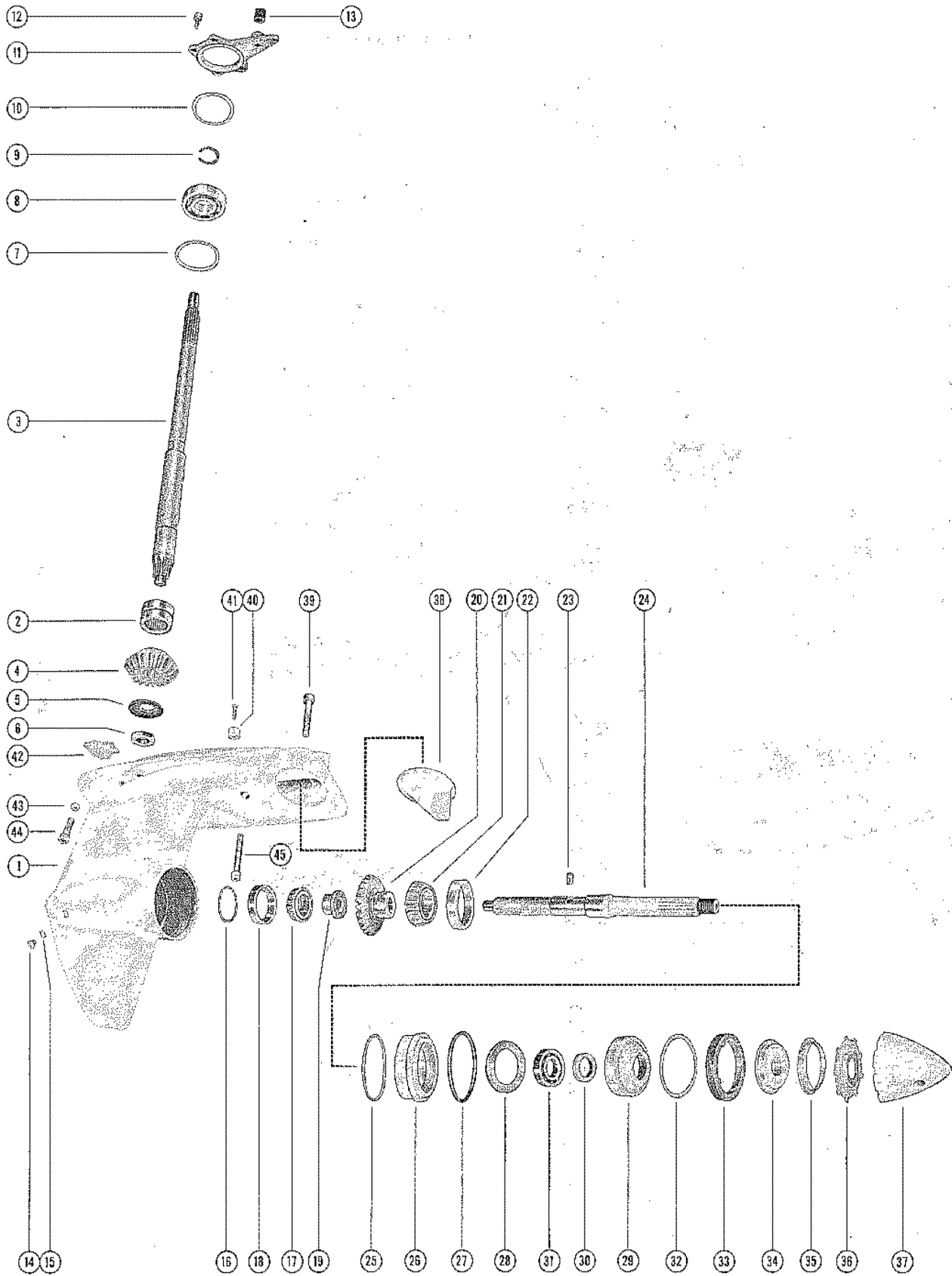


# GEAR HOUSING ASSEMBLY, COMPLETE

REF. NO.	PART NO.	SYM.	QTY.	DESCRIPTION
-	1625-2007A3		1	GEAR HOUSING ASSEMBLY, COMPLETE
1	1625-2007A1		1	GEAR HOUSING ASSEMBLY
2	31-31544		1	BEARING, ROLLER - DRIVE SHAFT
3	45-37253		1	DRIVE SHAFT
4	43-31527		1	GEAR, PINION - DRIVE SHAFT
5	34953		1	SHIELD, OIL
6	11-31538		1	NUT, PINION
7	15-20928A1		AR	SHIM, BEARING TO GEAR HOUSING (.002-3-5-10)
8	30-32165		1	BEARING, BALL - DRIVE SHAFT
9	53-31539		1	RING, SNAP - BALL BEARING TO GEAR HOUSING
10	15-20928A1		AR	SHIM, DRIVE SHAFT BALL BEARING TO RETAINER
11	34956		1	RETAINER, BALL BEARING - DRIVE SHAFT
12	10-30225		4	SCREW, BALL BEARING RETAINER TO HOUSING (1")
13	26-33613		1	SEAL, OIL TUBE - BALL BEARING RETAINER
14	10-28634		1	SCREW, GEAR HOUSING GREASE FILLER HOLE
15	12-20260		1	WASHER, GEAR HOUSING GREASE FILLER HOLE SCREW
16	15-31154A1		AR	SHIM, BEARING CUP TO GEAR HOUSING (.002-3-5-10)
17	31-31215A1		1	TAPERED ROLLER BEARING ASSEMBLY, PROPELLER SHAFT
18	31-31216		1	CUP, TAPERED ROLLER BEARING
19	31556		1	ADAPTOR, TAPERED ROLLER BEARING TO PROPELLER SHAFT
20	43-31526		1	GEAR, PROPELLER - PROPELLER SHAFT
21	31-30894A1		1	TAPERED ROLLER BEARING ASSEMBLY, PROPELLER SHAFT
22	31-31092		1	CUP, TAPERED ROLLER BEARING
23	17-31537		1	PIN, DOWEL - PROPELLER GEAR TO PROPELLER SHAFT
24	44-32245		1	SHAFT, PROPELLER
25	15-31535A1		AR	SHIM, BEARING CARRIER TO GEAR HOUSING (.002-3-5-10)
26	34955		1	CARRIER, BEARING - PROPELLER GEAR ROLLER BEARING
27	25-31534		1	"O"RING, BEARING CARRIER TO GEAR HOUSING COVER
28	32248		1	RING, BALL BEARING TO GEAR HOUSING COVER
29	32244A1		1	COVER ASEMBLY, GEAR HOUSING
30	26-31554		1	OIL SEAL, GEAR HOUSING COVER
31	30-20840		1	BEARING, BALL - GEAR HOUSING COVER
32	12-31536		1	WASHER, GEAR HOUSING COVER TO RETAINER
33	32247		1	RETAINER, GEAR HOUSING COVER
34	31643A1		1	THRUST HUB AND WASHER ASSEMBLY, PROPELLER SHAFT
35	12-31642		1	WASHER, CUPPED - THRUST HUB
36	14-31644		1	TAB WASHER, PROPELLER SHAFT
37	11-31608		1	NUT, PROPELLER
38	31640A1		1	TRIM TAB, GEAR HOUSING
39	10-31709		1	SCREW, TRIM TAB TO GEAR HOUSING (2 1/2")

CONTINUED ON NEXT PAGE ➡

# GEAR HOUSING ASSEMBLY, COMPLETE



## GEAR HOUSING ASSEMBLY, COMPLETE

REF. NO.	PART NO.	SYM.	QTY.	DESCRIPTION
40	32209		1	MAGNET, GEAR HOUSING
41	10-24878		1	SCREW, MAGNET TO GEAR HOUSING (1 1/4")
42	35-32250		1	SCREEN, FILTER - GEAR HOUSING
43	11-34933		8	NUT, DRIVE SHAFT HOUSING STUDS
44	10-32470		1	SCREW, GEAR HOUSING TO DRIVE SHAFT HOUSING (1 3/4")
45	10-31717		1	SCREW, GEAR HOUSING TO DRIVE SHAFT HOUSING (3 1/8")

# PARTS INDEX

Part Number	Description	Pg.	Ref. No.	Part Number	Description	Pg.	Ref. No.
20007	ANCHOR, SHIFT			31643A1	THRUST HUB AND WASHER ASSEMBLY, PROPELLER SHAFT	27	34
22789	"D" WASHER, LOCK-IN LIMIT SWITCH LEADS CLIP SCREW	21	57	31647	SHAFT, SPLINED-REVERSE LOCK ACTUATING	17	30
22789	"D" WASHER, TILT STOP SWITCH LEADS CLIP SCREW	5	36	31652	SHAFT, PIVOT-REVERSE LOCK	19	37
22789	"D" WASHER, TILT STOP SWITCH LEADS CLIP SCREW	7	13	31655	GUIDE, GEAR RACK-DRIVE SHAFT HOUSING	17	8
22789	"D" WASHER, TILT STOP SWITCH LEADS CLIP SCREW	9	22	31659	BELLOWS, SHIFT ACTUATING CABLE COVER	15	34
22834	BALL, WORM GEAR (LOWER)	13	25	31720A1	CABLE ASSEMBLY, SHIFT ACTUATING	19	54
26183A1	EMBLEM ASSEMBLY, SHIFT FORK COVER	7	18	31722	SHAFT, SPLINED-SECTOR GEAR PIVOT	17	24
29359	LUBRICAP, DRIVE SHAFT HOUSING GREASE FITTING	23	6	31730	LOCK, SPLINED-WORM GEAR LOCKING SLEEVE	7	27
29359	LUBRICAP, GIMBAL HOUSING GREASE FITTING	17	6	31842	KNOB, CRANK	7	32
29359	LUBRICAP, GIMBAL HOUSING GREASE FITTING	13	5	31844	SHAFT, STEERING-STEERING LEVER HOUSING	9	33
29359	LUBRICAP, GIMBAL RING GREASE FITTING	15	42	31897	LEVER, TILT STOP SWITCH ACTUATING-GIMBAL RING	15	52
29359	LUBRICAP, INNER TRANSOM PLATE GREASE FITTING	3	12	31899	PLATE, RETAINING-TILT STOP SWITCH TO GIMBAL RING	15	50
29359	LUBRICAP, INNER TRANSOM PLATE GREASE FITTING	3	30	31955	HOOK, REVERSE LOCK-RIGHT AND LEFT	19	41
29359	LUBRICAP, STEERING LEVER HOUSING GREASE FITTING	9	5	32087	RETAINER, LOWER GEAR TAPERED ROLLER BEARING CUP	25	25
29880	GUIDE, SHIFT ACTUATING CABLE END	21	56	32209	MAGNET, GEAR HOUSING	29	40
30212	TERMINAL BLOCK, INNER TRANSOM PLATE (NOT AS SHOWN)	7	14	32239	CLAMP NUT, STEERING LEVER HOUSING	7	2
30866A2	SWITCH ASSEMBLY, CUT-OUT-INNER TRANSOM PLATE	3	27	32244A1	COVER ASSEMBLY, GEAR HOUSING	27	29
31556	ADAPTOR, TAPERED ROLLER BEARING TO PROPELLER SHAFT	27	19	32247	RETAINER, GEAR HOUSING COVER	27	33
31573	RACK, GEAR-SHIFT ACTUATING CABLE	19	52	32248	RING, BALL BEARING TO GEAR HOUSING COVER	27	28
31576	RETAINER, PINION GEAR ROLLER BEARING	25	35	32276A2	PLATE ASSEMBLY, TRANSOM-OUTER	3	1
31631	COVER, RETAINING-WORM GEAR TO INNER TRANSOM PLATE	7	24	32367	COVER, TOP-DRIVE SHAFT HOUSING	23	14
31635	SEAL, RUBBER-GIMBAL HOUSING TO OUTER TRANSOM PLATE	13	16	32367	COVER, TOP-DRIVE SHAFT HOUSING	23	14
31636	SEAL, RUBBER-OUTER TRANSOM PLATE TO TRANSOM	3	4	32419A1	GIMBAL HOUSING ASSEMBLY	13	1
31640A1	TRIM TAB, GEAR HOUSING	27	38	32420A2	STEERING LEVER HOUSING ASSEMBLY	9	1
				32463A2	ARM ASSEMBLY, CUT-OUT SWITCH ACTUATING-INNER TRANSOM PLATE	3	16
				32464	PLUNGER, SWITCH ACTUATING ARM	3	17
				32676A1	TILT STOP SWITCH ASSEMBLY, GIMBAL RING	15	47
				32788	DISC, THRUST-WORM GEAR (LOWER)	7	17



# PARTS INDEX

Part Number	Description	Pg.	Ref. No.	Part Number	Description	Pg.	Ref. No.
32795	LINER, OUTER TRANSOM PLATE .....	3	5	35180	YOKE, SHIFT LINK TO SECTOR GEAR .....	17	20
33075A1	CORE WIRE AND ANCHOR ASSEMBLY, SHIFT ACTUATING CABLE (INNER .....	19	55	35181A1	SHIFT LINK ASSEMBLY, DRIVE SHAFT HOUSING .	17	15
33501	RETAINER, SPRING AND PLUNGER TO SWITCH ACTUATING ARM .....	3	19	35221	RING, SWIVEL-CABLE GUIDE TUBE PIVOT YOKE	5	55
33639	CATCH, CLAMP NUT .....	7	3	35231A1	COVER ASSEMBLY, SHIFT FORK .....	23	5
33775	ARM, STEERING-UPPER ...	9	35	35249	LATCH, STEERING LEVER HOUSING .....	9	13
33923A10	CRANK ASSEMBLY (10") ...	7	30	35600A2	GIMBAL RING ASSEMBLY ..	15	38
33923A16	CRANK ASSEMBLY (16") ...	7	30	36013	UNIVERSAL JOINT ASSEMBLY, PINION GEAR	25	32
33923A22	CRANK ASSEMBLY (22") ...	7	30	36144	ADAPTOR, GIMBAL HOUSING .....	13	13
33923A28	CRANK ASSEMBLY (28") ...	7	30	36147	CARRIER, BEARING-GIMBAL HOUSING BALL BEARING	13	8
33923A34	CRANK ASSEMBLY (34") ...	7	30	36213	TUBE, REVERSE LOCK PIVOT SHAFT .....	19	38
34009	LINK ROD, LOWER STEERING ARM TO GIMBAL RING .....	9	29	36214A1	STOP ASSEMBLY, REVERSE LOCK .....	19	35
34051A2	SWITCH ASSEMBLY, LOCK- IN LIMIT-OUTER TRANSOM PLATE .....	3	32	36287	COVER, CLAMP NUT-INNER TRANSOM PLATE .....	7	6
34056	COVER, LOCK-IN LIMIT SWITCH-INNER TRANSOM PLATE .....	3	14	36312	CROSS AND BEARING ASSEMBLY, UNIVERSAL JOINT .....	25	33
34057A1	EYE ASSEMBLY, SHIFT ACTUATING CABLE GUIDE .....	17	10	37250	ADAPTOR, GIMBAL HOUSING .....	13	13
34060	PLUNGER, OUTER TRANSOM PLATE .....	3	31	37267A1	GIMBAL HOUSING ASSEMBLY .....	13	1
34088	BELLOWS, UNIVERSAL JOINT COVERING .....	15	29	37288A1	GIMBAL RING ASSEMBLY ..	15	38
34125	YOKE, CABLE GUIDE TUBE PIVOT-STEERING CABLE BRACKET .....	5	56	38329A1	SHAFT ASSEMBLY, REVERSE LOCK ACTUATING .....	19	30
34157	ARM, REVERSE LOCK- RIGHT .....	19	39	38381	ARM, REVERSE LOCK-LEFT	19	40
34158	ARM, REFERE LOCK-LEFT	19	40	38382	HOOK, REVERSE LOCK- RIGHT AND LEFT .....	19	41
34193	PLATE, TRANSOM-INNER ..	3	6	38383	ARM, REVERSE LOCK- RIGHT .....	19	39
34193	PLATE, TRANSOM-INNER ..	7	1	38779A1	GIMBAL RING ASSEMBLY ..	15	38
34214	ARM, SHIFT CABLE MOUNTING-STEERING BRACKET .....	5	39	39383	SOCKET, CENTER- UNIVERSAL JOINT .....	25	--
34618	CAM, REVERSE LOCKING ACTUATING .....	19	34	39495	YOKE, UNIVERSAL JOINT (GEAR END) .....	25	--
34762A1	PLATE ASSEMBLY, INHIBITOR-OUTER TRANSOM PLATE .....	3	2	39496	YOKE, UNIVERSAL JOINT (COUPLING END) .....	25	34
34903	ARM, STEERING-LOWER ..	9	23	39670A1	SWITCH ASSEMBLY, CUT- OUT-INNER TRANSOM PLATE .....	3	28
34949	COVER, TOP-DRIVE SHAFT HOUSING .....	23	14	39672A2	EXTENSION HARNESS ASSEMBLY, TILT SWITCH (QUICK DISCONNECT) ..	5	37
34953	SHIELD, OIL .....	27	5	10-20031	SCREW, TILT STIP SWITCH COVER TO GIMBAL HOUSING (1/2") .....	15	48
34955	CARRIER, BEARING - PROPELLER GEAR ROLLER BEARING .....	27	26	10-20518	SCREW, SET-ANCHOR TO SHIFT ACTUATING CABLE END .....	21	58
34956	RETAINER, BALL BEARING - DRIVE SHAFT .....	27	11				
35096	YOKE, UPPER STEERING ARM .....	11	37				

# PARTS INDEX

Part Number	Description	Pg.	Ref. No.	Part Number	Description	Pg.	Ref. No.
10-21356	SCREW, KNOB TO CRANK . . . . .	7	33	10-31856	SCREW, SHIFT LINK TO SHIFT FORK (1") . . . . .	17	16
10-22290	SCREW, DRIVE-SERIAL PLATE ATTACHING . . . . .	9	16	10-31877	SCREW, GIMBAL HOUSING TO STEERING LEVER HOUSING (1 1/2") . . . . .	13	26
10-22659	SCREW, SHIFT ACTUATING CABLE TO SHIFT CABLE ARM (1 5/8") . . . . .	5	45	10-31903	SCREW, RETAINING PLATE TO GIMBAL RING (3/8") . . . . .	15	51
10-22659	SCREW, SHIFT CABLE ASSEMBLY TO SHIFT CABLE ARM (1 5/8") . . . . .	5	49	10-31903	SCREW, TILT STIP SWITCH ACTUATING LEVER TO GIMBAL RING (3/8") . . . . .	15	53
10-24878	SCREW, MAGNET TO GEAR HOUSING (1 1/4") . . . . .	29	41	10-31903	SCREW, TILT STOP SWITCH LEADS CLIP TO GIMBAL HOUSING (3/8") . . . . .	13	24
10-25503	SCREW, CLAMP NUT COVER TO INNER TRANSOM PLATE (2") . . . . .	7	7	10-31972	SCREW, LATCH TO STEERING LEVER HOUSING . . . . .	9	14
10-25764	SCREW, TILT STOP SWITCH LEADS CLIP TO CLAMP NUT COVER . . . . .	7	12	10-31983	SCREW, STEERING LEVER HOUSING STOP-CLAMP NUT COVER . . . . .	7	10
10-26668	SCREW, COVER TO INNER TRANSOM PLATE . . . . .	3	15	10-31984	SCREW, CLAMP NUT COVER TO INNER TRANSOM PLATE (1 3/8") . . . . .	7	8
10-28634	SCREW, GEAR HOUSING GREASE FILLER HOLE . . . . .	27	14	10-31985	SCREW, TOP COVER TO DRIVE SHAFT HOUSING (1 1/4") . . . . .	23	19
10-28668	SCREW, DRIVE SHAFT HOUSING TO GEAR HOUSING . . . . .	17	13	10-32024	SCREW, TERMINAL BLOCK TO INNER TRANSOM PLATE . . . . .	7	16
10-29762	SCREW, TORSION SPRING TO STEERING LEVER HOUSING . . . . .	9	18	10-32031	SCREW, LOCK-IN LIMIT SWITCH LEADS CLIP TO INNER TRANSOM PLAT . . . . .	5	35
10-30225	SCREW, BALL BEARING RETAINER TO HOUSING (1") . . . . .	27	12	10-32031	SCREW, TILT STOP SWITCH LEADS CLIP TO STEERING LEVER HOUSING . . . . .	9	21
10-30663	SCREW, TILT STOP SWITCH LEADS TO TERMINAL BLOCK . . . . .	7	15	10-32124	SCREW, GEAR RACK TO DRIVE SHAFT HOUSING (7/8") . . . . .	17	27
10-30902	SCREW, CUT-OUT SWITCH TO INNER TRANSOM PLATE . . . . .	3	28	10-32132	SCREW, RETAINER TO DRIVE SHAFT HOUSING (1 3/4") . . . . .	25	36
10-31628	BOLT, PIVOT-GIMBAL RING (UPPER) . . . . .	13	19	10-32155	SCREW, REVERSE LOCK HOOK TO REVERSE LOCK ARM (1") . . . . .	19	43
10-31685	SCREW, SET-CAM TO ACTUATING CAM SHAFT . . . . .	19	32	10-32196	BOLT, LOWER-SHOCK ABSORBER TO DRIVE SHAFT HOUSING (4 5/8") . . . . .	21	61
10-31700	SCREW, SET-SHIFT ACTUATING CABLE TO GEAR RACK . . . . .	19	50	10-32470	SCREW, GEAR HOUSING TO DRIVE SHAFT HOUSING (1 3/4") . . . . .	29	44
10-31709	SCREW, TRIM TAB TO GEAR HOUSING (2 1/2") . . . . .	27	39	10-32759	SCREW, CATCH TO CLAMP NUT . . . . .	7	4
10-31716	SCREW, SHIFT FORK COVER TO DRIVE SHAFT HOUSING (5/8") . . . . .	23	10	10-34055	SCREW, LOCK-IN LIMIT SWITCH TO OUTER TRANSOM PLATE . . . . .	3	33
10-31717	SCREW, GEAR HOUSING TO DRIVE SHAFT HOUSING (3 1/8") . . . . .	29	45	10-34763	SCREW, INHIBITOR PLATE TO OUTER TRANSOM PLATE . . . . .	3	3
10-31830	SCREW, LOWER STEERING ARM TO STEERING SHAFT (1 3/4") . . . . .	9	27	10-34954	BOLT, LINK ROD TO LOWER STEERING ARM (1 5/16") . . . . .	9	24
10-31830	SCREW, UPPER STEERING ARM TO STEERING SHAFT (1 3/4") . . . . .	11	41				
10-31832	BOLT, PIVOT-PIVOT YOKE TO SWIVEL RING . . . . .	5	57				

# PARTS INDEX

Part Number	Description	Pg.	Ref. No.	Part Number	Description	Pg.	Ref. No.
10-35095	SCREW, STEERING CABLE TO UPPER STEERING ARM YOKE	11	38	12-20260	WASHER, GEAR HOUSING GREASE FILLER HOLE SCREW	27	15
10-35624	BOLT, OUTER TRANSOM PLATE TO INNER TRANSOM PLATE (4")	3	7	12-20546	WASHER, SWITCH ACTUATING ARM TO INNER TRANSOM PLATE STUD	3	25
10-36285	SCREW, SHIFT LINK TO YOKE (3/4")	17	18	12-20959	WASHER, GIMBAL HOUSING SCREW	13	27
10-36375	SCREW, SET-TAPERED ROLLER BEARING CUP RETAINER	25	26	12-20959	WASHER, STEERING LEVER HOUSING STUD	9	10
11-20061	NUT, SHIFT LINK SCREW	17	19	12-21900	WASHER, OUTER TRANSOM PLATE BOLT	3	9
11-20102	NUT, STEERING CABLE SCREW	11	40	12-26825	WASHER, SHIFT CABLE MOUNTING ARM STUD	5	42
11-20361	NUT, SHIFT ACTUATING CABLE SCREW	5	48	12-28001	WASHER, TORSION SPRING SCREW	9	19
11-20361	NUT, SHIFT CABLE ASSEMBLY SCREW	5	52	12-29245	WASHER, SWITCH ACTUATING ARM CABLE STUD	3	21
11-20361	NUT, SWITCH ACTUATING ARM CABLE STUD	3	22	12-29395	WASHER, REVERSE LOCK ACTUATING CAM SHAFT	17	31
11-20664	NUT, SHIFT LINK SCREW	17	17	12-29395	WASHER, REVERSE LOCK ACTUATING CAM SHAFT (1/16")	19	31
11-22339	NUT, LOWER SHOCK ABSORBER BOLT	21	62	12-29629	WASHER, REVERSE LOCK ACTUATING CAM SHAFT	17	29
11-22339	NUT, UPPER PIVOT BOLT	13	21	12-30283	WASHER, SECTOR GEAR PIVOT SHAFT	17	23
11-26484	NUT, JAM-TAPERED ROLLER BEARING CUP RETAINER SET SCREW	25	27	12-31536	WASHER, GEAR HOUSING COVER TO RETAINER	27	32
11-28040	NUT, STEERING LEVER HOUSING STUD	9	11	12-31581	WASHER, GIMBAL RING TO GIMBAL HOUSING	15	43
11-30499	NUT, PINION GEAR TO UNIVERSAL JOINT	25	46	12-31633	WASHER, GIMBAL RING HINGE PIN	15	46
11-31538	NUT, PINION	27	6	12-31642	WASHER, CUPPED - THRUST HUB	27	35
11-31608	NUT, PROPELLER	27	37	12-31653	WASHER, SEPARATING-GIMBAL HOUSING TO OUTER TRANSOM PLATE	13	17
11-31847	NUT, LINK ROD BOLT	9	26	12-31690	WASHER, SHIFT ACTUATING CABLE-GEAR RACK	19	51
11-31847	NUT, LINK ROD BOLT	9	32	12-31727	WASHER, THRUST-WORM GEAR TO RETAINING COVER (UPPER)	7	23
11-32060	NUT, TAPERED ROLLER BEARING TO LOWER GEAR	25	31	12-31829	WASHER, NYLON-UPPER AND LOWER STEERING ARMS TO SHAFT	9	34
11-32060	NUT, TAPERED ROLLER BEARING TO UPPER GEAR	25	24	12-32073	WASHER, PINION GEAR TO UNIVERSAL JOINT NUT	25	45
11-33825	NUT, REVERSE LOCK HOOK SCREW	19	46	12-32161	WASHER, UPPER GEAR TAPERED ROLLER BEARING	25	21
11-34059	NUT, SHIFT ACTUATING CABLE GUIDE EYE	17	12	12-32620	WASHER, RUBBER-OUTER TRANSOM PLATE BOLT	3	8
11-34087	NUT, OUTER TRANSOM PLATE BOLT	3	10	12-35683	WASHER, CABLE GUIDE PIVOT YOKE	5	59
11-34932	NUT, TILT ADJUSTMENT PIN	15	37	12-35685	WASHER, UPPER STEERING ARM YOKE	9	36
11-34933	NUT, DRIVE SHAFT HOUSING STUDS	29	43				
11-35222	NUT, JAM-STEERING CABLE GUIDE TUBE	5	54				
11-35814	NUT, SHIFT CABLE MOUNTING ARM STUD	5	44				
11-35814	NUT, SWITCH ACTUATING ARM TO TO INNER TRANSOM PLATE STUD	3	26				
12-20084	WASHER, STEERING CABLE SCREW	11	39				

# PARTS INDEX

Part Number	Description	Pg.	Ref. No.	Part Number	Description	Pg.	Ref. No.
12-36001	WASHER, REVERSE LOCK HOOK SCREW . . . . .	19	45	15-35244A1	SHIM, GIMBAL HOUSING BALL BEARING (.002-3-4-5-6-7-8-10) . . . . .	13	6
12-36362	WASHER, UPPER PIVOT BOLT . . . . .	13	20	16-20075	STUD, SHIFT ACTUATING CABLE TO SWITCH ACTUATING ARM . . . . .	3	20
12-38334	WASHER, SYNTHANE-GIMBAL RING HINGE PIN	15	46	16-30715	STUD, SHIFT CABLE MOUNTING ARM TO STEERING CABLE BRACKET . . . . .	5	41
12-38344	WASHER, REVERSE LOCK ACTUATING CAM SHAFT (1/32") . . . . .	19	31	16-32129	STUD, DRIVE SHAFT HOUSING TO GEAR HOUSING . . . . .	17	7
12-39143	WASHER, SHIFT ACTUATING CABLE SCREW . . . . .	5	47	16-32421	STUD, STEERING LEVER HOUSING TO GIMBAL HOUSING (7 1/4") . . . . .	9	9
12-39143	WASHER, SHIFT CABLE ASSEMBLY SCREW . . . . .	5	51	16-32422	STUD, STEERING LEVER HOUSING TO GIMBAL HOUSING (6 5/8") . . . . .	9	8
12-39279	WASHER, LEATHER-SHIFT ACTUATING CABLE . . . . .	19	--	16-32467	STUD, SWITCH ACTUATING ARM TO INNER TRANSOM PLATE (2 5/16") . . . . .	3	24
13-21547	LOCKWASHER, CATCH TO CLAMP NUT SCREW . . . . .	7	5	17-31537	PIN, DOWEL - PROPELLER GEAR TO PROPELLER SHAFT . . . . .	27	23
13-31848	LOCKWASHER, PIVOT YOKE TO SWIVEL RING PIVOT BOLT . . . . .	5	58	17-31627	PIN, UPPER PIVOT BOLT LOCKING . . . . .	13	22
14-31644	TAB WASHER, PROPELLER SHAFT . . . . .	27	36	17-31630	PIN, UPPER-SHOCK ABSORBER TO GIMBAL RING . . . . .	21	60
14-31651	TAB WASHER, GEAR RACK GUIDE SCREW . . . . .	17	28	17-31634	PIN, SWIVEL-GIMBAL HOUSING TO GIMBAL RING (LOWER) . . . . .	15	31
14-31828	TAB WASHER, LOWER STEERING ARM SCREW . . . . .	9	28	17-31728	PIN, WORM GEAR-SLEEVE AND CRANK LOCKING . . . . .	7	21
14-31828	TAB WASHER, RETAINER SCREW . . . . .	25	37	17-35601	PIN, HINGE-GIMBAL RING TO DRIVE SHAFT HOUSING . . . . .	15	44
14-31828	TAB WASHER, UPPER STEERING ARM SCREW . . . . .	11	42	17-35997	PIN, TILT ADJUSTMENT-GIMBAL RING . . . . .	15	36
14-32054	TAB WASHER, TAPERED ROLLER BEARING TO UPPER GEAR NUT . . . . .	25	23	18-20180	COTTER PIN, SECTOR GEAR PIVOT SHAFT . . . . .	17	25
14-32054	TAB WASHER, TAPERED ROLLER BEARING TO LOWER GEAR NUT . . . . .	25	30	18-20209	COTTER PIN, CAM TO ACTUATING CAM SHAFT . . . . .	19	32A
15-20928A1	SHIM, BEARING TO GEAR HOUSING (.002-3-5-10) . . . . .	27	7	18-31839	COTTER PIN, REVERSE LOCK ACTUATING CAM SHIFT . . . . .	19	33
15-20928A1	SHIM, DRIVE SHAFT BALL BEARING TO RETAINER . . . . .	27	10	18-34212	COTTER PIN, HINGE PIN RETAINING-GIMBAL RING . . . . .	15	45
15-31154A1	SHIM, BEARING CUP TO GEAR HOUSING (.002-3-5-10) . . . . .	27	16	18-36377	COTTER PIN, RETAINING-LOWER SWIVEL PIN . . . . .	15	32
15-31535A1	SHIM, BEARING CARRIER TO GEAR HOUSING (.002-3-5-10) . . . . .	27	25	18-45882	COTTER PIN, REVERSE LOCK PIVOT SHAFT AND TUBE . . . . .	19	36
15-32057A1	SHIM, BEARING CUP TO DRIVE SHAFT HOUSING (.002-3-5-10-25) . . . . .	25	29	19-29850	PLUG, TRIM TAB HOLE-DRIVE SHAFT HOUSING . . . . .	23	2
15-32057A1	SHIM, ROLLER BEARING CUP TO RETAINER (.002-3-5-10-25) . . . . .	25	41	19-31843	WELCH PLUG, UPPER PIVOT BOLT COVER-GIMBAL HOUSING . . . . .	13	18
15-32061A1	SHIM, WASHER TO DRIVE SHAFT HOUSING (.002-3-5-10-25) . . . . .	25	20				
15-32062A1	SHIM, RETAINER TO DRIVE SHAFT HOUSING (.002-3-5-10-25) . . . . .	25	38				

# PARTS INDEX

Part Number	Description	Pg.	Ref. No.	Part Number	Description	Pg.	Ref. No.
22-20025	PLUG, PIPE-OIL CHANNEL-DRIVE SHAFT HOUSING	23	11	24-34011	SPRING, TENSION-REVERSE LOCK HOOK TO REVERSE LOCK ARM	19	42
22-23612	FITTING, GREASE-GIMBAL RING	15	41	24-34154	SPRING, TENSION-REVERSE LOCK ARM TO REVERSE LOCK ARM	19	49
22-23612	FITTING, GREASE-INNER TRANSOM PLATE	3	29	24-34210	SPRING, TORSION-REVERSE LOCK ARM TO STOP ASSEMBLY (RIGHT)	19	47
22-23612	FITTING, GREASE-STEERING LEVER HOUSING	9	4	24-34211	SPRING, TORSION-REVERSE LOCK ARM TO STOP ASSEMBLY (LEFT)	19	48
22-25094	FITTING, GREASE (45)-INNER TRANSOM PLATE	3	11	24-34381	SPRING, TORSION-LATCH	9	17
22-25885	ELBOW, STEERING LEVER HOUSING	9	12	24-38373	SPRING, TENSION-REVERSE LOCK HOOK TO REVERSE LOCK ARM	19	42
22-31345	FITTING, GREASE-DRIVE SHAFT HOUSING	17	5	25-31305	"O" RING, GIMBAL HOUSING ADAPTOR (LARGE)	13	14
22-31345	FITTING, GREASE-GIMBAL HOUSING	13	4	25-31534	"O"RING, BEARING CARRIER TO GEAR HOUSING COVER	27	27
22-32018	PLUG, OIL FILLER-SHIFT FORK COVER	23	7	25-32068	"O" RING, TOP COVER SEALING	23	12
22-32125	CONNECTOR, SHIFT ACTUATING CABLE	19	53	25-32069	"O" RING, ROLLER BEARING RETAINER	25	39
23-26841	BUSHING, SWITCH ACTUATING ARM TO INNER TRANSOM PLATE STUD	3	23	25-32424	"O" RING, GIMBAR HOUSING ADAPTOR (SMALL)	13	15
23-26992	LOCKWASHER, WORM GEAR COVER AND LOCK SCREW	7	29	25-35126	RING, OIL FILLER PLUG	23	8
23-27818	SPACER, SHIFT CABLE MOUNTING ARM STUD	5	43	25-36145	"O" RING, GIMMBAL HOUSING ADAPTOR (LARGE)	13	14
23-31726	SLEEVE, WORM GEAR LOCKING	7	26	26-31249	OIL SEAL, REVERSE LOCK ACTUATING CAM SHAFT-DRIVE HOUSING	17	9
23-31757	BUSHING, NYLON-WORM GEAR (LOWER)	7	19	26-31554	OIL SEAL, GEAR HOUSING COVER	27	30
23-31758	SPACER, SHIFT CABLE MOUNTING ARM STUD	5	40	26-31851	OIL SEAL, STEERING LEVER HOUSING	9	3
23-31853	BUSHING, LINK ROD BOLT	9	25	26-32911	OIL SEAL, GIMBAL HOUSING	13	2
23-31853	BUSHING, LINK ROD BOLT	9	31	26-32911	OIL SEAL, GIMBAL RING	15	39
23-31857	BUSHING, NYLON-WORM GEAR (UPPER)	7	22	26-33613	SEAL, OIL TUBE - BALL BEARING RETAINER	27	13
23-31866	SPACER, SHIFT ACTUATING CABLE SCREW	5	46	26-36054	OIL SEAL, ROLLER BEARING RETAINER	25	40
23-31866	SPACER, SHIFT CABLE ASSEMBLY SCREW	5	50	26-36143	GREASE SEAL, GIMBAL HOUSING ADAPTOR	13	12
23-31902	SPACER, TILT STOP SWITCH TO RETAINING PLATE	15	49	26-36146	OIL SEAL, GIMBAL HOUSING ADAPTOR	13	12
23-31962	SPACER, REVERSE LOCK HOOK SCREW	19	44	27-32277	GASKET, DRIVE SHAFT HOUSING TO GEAR HOUSING	23	3
23-32066	SPACER, PINION GEAR ROLLER BEARING CUPS	25	43	27-32366	GASKET, SHIFT FORK COVER	23	9
23-34058	SPACER, SHIFT ACTUATING CABLE GUIDE EYE	17	11	27-32423	GASKET, STEERING LEVER HOUSING TO GIMBAL HOUSING	9	7
23-35130	ADAPTOR, BALL BEARING	13	7	30-20840	BEARING, BALL - GEAR HOUSING COVER	27	31
23-38335	BUSHING, SYNTHANE-DRIVE SHAFT HOUSING	17	2	30-32165	BEARING, BALL - DRIVE SHAFT	27	8
24-31729	SPRING, COMPRESSION-WORM GEAR LOCKING SLEEVE	7	25				

# PARTS INDEX

Part Number	Description	Pg.	Ref. No.	Part Number	Description	Pg.	Ref. No.
30-36056	BEARING, BALL-GIMBAL HOUSING	13	9	43-31605	GEAR, WORM-INNER TRANSOM PLATE	7	20
30-36418	BEARING, BALL-GIMBAL HOUSING	13	9	43-31719	GEAR, REVERSE LOCK ACTUATING CAM SHAFT	17	26
31-30457	BEARING, ROLLER-STEERING LEVER HOUSING	9	2	43-31719	GEAR, REVERSE LOCK-SECTOR GEAR PIVOT SHAFT	17	22
31-30894A1	TAPERED ROLLER BEARING ASSEMBLY, PROPELLER SHAFT	27	21	43-32260	GEAR, PINION-UNIVERSAL JOINT	23	18
31-30894A3	TAPERED ROLLER BEARING ASSEMBLY, PINION GEAR	25	42	43-32261	GEAR, UPPER AND LOWER SEE BLOCK I ON C1	23	16&17
31-30894A4	TAPERED ROLLER BEARING ASSEMBLY, LOWER GEAR	25	28	43-35178	GEAR, SECTOR-GEAR RACK GUIDE	17	21
31-30894A4	TAPERED ROLLER BEARING ASSEMBLY, UPPER GEAR	25	22	43-37238	GEAR, REVERSE	23	17
31-31092	CUP, TAPERED ROLLER BEARING	27	22	43-37238A2	GEAR ASSEMBLY, COMPLETE (INCLUDES FORWARD AND PINION GEAR)	23	16 & 1
31-31215A1	TAPERED ROLLER BEARING ASSEMBLY, PROPELLER SHAFT	27	17	43-39321	GEAR, REVERSE	23	17
31-31216	CUP, TAPERED ROLLER BEARING	27	18	43-39377A2	GEAR ASSEMBLY, COMPLETE (INCLUDES FORWARD AND PINION GEAR)	23	16 & 1
31-31544	BEARING, ROLLER - DRIVE SHAFT	27	2	44-32245	SHAFT, PROPELLER	27	24
31-31559	BEARING, ROLLER-GIMBAL HOUSING	13	3	45-37253	DRIVE SHAFT	27	3
31-31559	BEARING, ROLLER-GIMBAL RING	15	40	52-35176	CLUTCH, SLIDING-SHIFT FORK	23	15
32-31879	TUBE, NYLON-SHIFT ACTUATING CABLE GUIDE	9	6	52-37239	CLUTCH, SLIDING-SHIFT FORK SEE BLOCK II ON C1	23	15
32-35015	TUBE, STEERING CABLE GUIDE	5	53	52-39322	CLUTCH, SLIDING-SHIFT FORK SEE BLOCK III ON C1	23	15
32-35127	TUBE, OIL-DRIVE SHAFT HOUSING	23	4	53-31539	RING, SNAP - BALL BEARING TO GEAR HOUSING	27	9
35-32250	SCREEN, FILTER - GEAR HOUSING	29	42	53-32185	RING, RETAINING - PINION GEAR ROLLER CUP TO RETAINER	25	44
37-32049	LABEL, ENGINE ROTATION-INNER TRANSOM PLATE	3	13	53-35128	RING, RETAINING-BALL BEARING (LARGE)	13	11
37-32187	LABEL, DIRECTIONAL AND INSTRUCTIONAL-CRANK	7	31	53-35129	RING, RETAINING-BALL BEARING (SMALL)	13	10
37-32431	DECAL, DRIVE SHAFT HOUSING-STARBOARDUSE	17	3	54-20386	CLAMP, SHIFT ACTUATING CABLE BELLOWS TO SHIFT ACTUATING CABL	15	35
37-32432	DECAL, DRIVE SHAFT HOUSING-PORT	17	4	54-24836	CLIP, LOCK-IN LIMIT SWITCH LEADS TO INNER TRANSOM PLATE	5	34
37-33737	DECAL, NAME PLATE (POWERED BY MERCURISER DRIVE)	11	--	54-24836	CLIP, TILT STOP SWITCH LEADS TO CLAMP NUT COVER	7	11
37-39395	DECAL, SERIAL NUMBER (STARTED WITH)	9	16	54-24836	CLIP, TILT STOP SWITCH LEADS TO GIMBAL HOUSING	13	23
37-39428A1	DECAL SET, DRIVE SHAFT HOUSING	17	3&4	54-24836	CLIP, TILT STOP SWITCH LEADS TO STEERING LEVER HOUSING	9	20
38-31042	SERIAL PLATE USE FROM SERIAL	9	15				
43-31526	GEAR, PROPELLER - PROPELLER SHAFT	27	20				

# PARTS INDEX

Part Number	Description	Pg.	Ref. No.	Part Number	Description	Pg.	Ref. No.
54-31766	CLAMP, SHIFT ACTUATING CABLE BELLOWS TO GIMBAL HOUSING . . . . .	15	33				
54-31767	CLAMP, UNIVERSAL JOINT BELLOWS TO DRIVE SHAFT HOUSING (LARGE	15	30				
55-31689	SHOCK ABSORBER . . . . .	21	59				
92-27109--1	ADHESIVE COMPOUND (3 1/2 UNCE KIT), EMBLEM FASTENING . . . . .	25	46				
1544-2008A9	DRIVE SHAFT HOUSING ASSEMBLY . . . . .	17	1				
1544-2008A9	DRIVE SHAFT HOUSING ASSEMBLY . . . . .	23	1				
1544-2444A3	DRIVE SHAFT HOUSING ASSEMBLY . . . . .	17	1				
1544-2444A3	DRIVE SHAFT HOUSING ASSEMBLY . . . . .	23	1				
1544-2549A11	DRIVE SHAFT HOUSING ASSEMBLY . . . . .	17	1				
1544-2549A11	DRIVE SHAFT HOUSING ASSEMBLY . . . . .	23	1				
1544-2549A4	DRIVE SHAFT HOUSING ASSEMBLY . . . . .	17	1				
1544-2549A4	DRIVE SHAFT HOUSING ASSEMBLY . . . . .	23	1				
1625-2007A1	GEAR HOUSING ASSEMBLY	27	1				
1625-2007A3	GEAR HOUSING ASSEMBLY, COMPLETE . . . . .	27	-				