



PARTS CATALOG

MERC 1000BP

SERIAL NUMBER

1000BP	2399698 THRU 2641854
1250BP	2400058 THRU 2641954

TABLE OF CONTENTS:

CLAMP AND SWIVEL BRACKET ASSEMBLY	2
DRIVE SHAFT HOUSING ASSEMBLY	6
GEAR HOUSING ASSEMBLY, COMPLETE (PAGE 1)	8
GEAR HOUSING ASSEMBLY, COMPLETE (PAGE 2)	12
MISCELLANEOUS PARTS/ACCESSORIES	1
PARTS INDEX	16

NOTE: *Indented description indicate that these parts are included in preceeding assembly.*

AR = As Required

NSS = Not Sold Separate

OPT = Optional

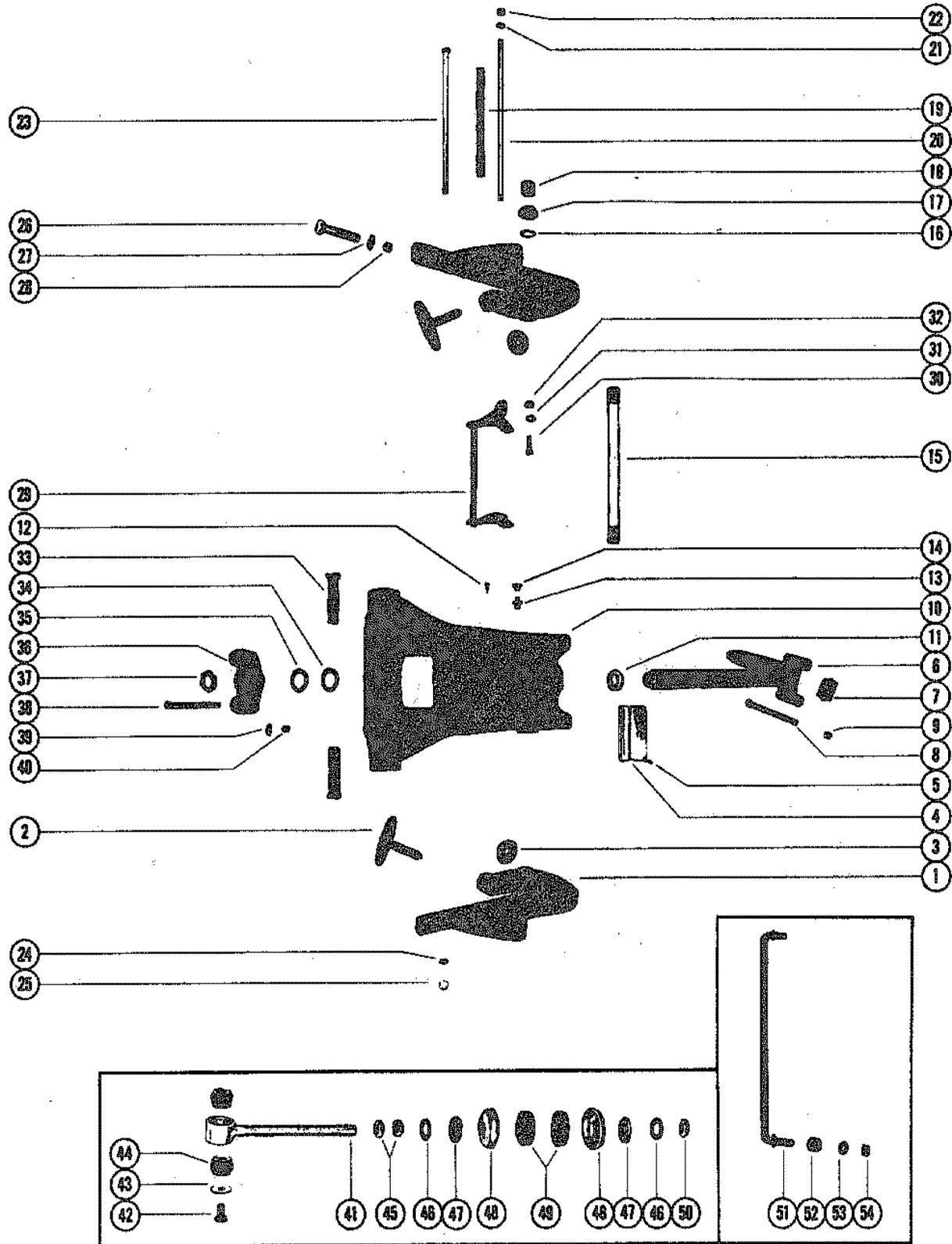
NS = Not Shown

THESE PARTS BOOKS/FICHE CARD ARE COPYRIGHTED AND MAY NOT BE DISTRIBUTED OR REPRODUCED IN ANY OTHER FORMAT BY ANYONE OTHER THAN MERCURY MARINE WITHOUT THE PRIOR WRITTEN CONSENT OF MERCURY MARINE.

MISCELLANEOUS PARTS/ACCESSORIES

REF. NO.	PART NO.	SYM.	QTY.	DESCRIPTION
-	1570-3745A2		0	CONVERSION KIT (LONG SHAFT)
-	53667A1		0	TACHOMETER ASSEMBLY
-	49248A1		0	REVERSE THROTTLE LIMIT KIT

CLAMP AND SWIVEL BRACKET ASSEMBLY

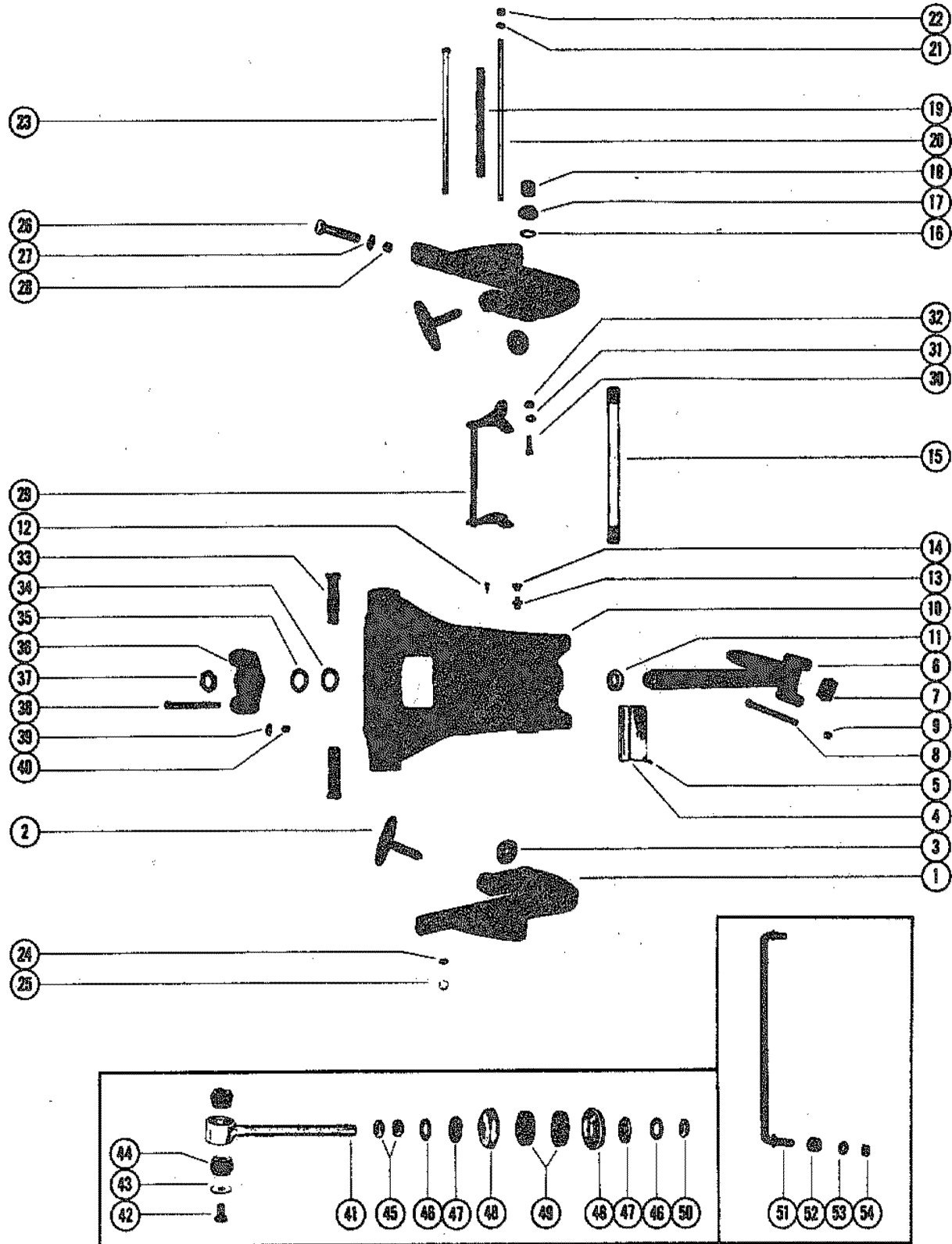


CLAMP AND SWIVEL BRACKET ASSEMBLY

REF. NO.	PART NO.	SYM.	QTY.	DESCRIPTION
1	1440-3296A1		2	CLAMP BRACKET ASSEMBLY
2	28403A3		2	THUMB SCREW ASSEMBLY
3	12-28404		2	WASHER, THUMB SCREW
4	38-39784		1	SERIAL PLATE
5	10-25612		4	SCREW, SERIAL PLATE TO SWIVEL BRACKET
6	17-48883A1		1	SWIVEL PIN AND STEERING ARM ASSEMBLY
7	26-52924		1	SEAL, RUBBER - SWIVEL PIN
8	10-49373		2	BOLT, STEERING ARM TO UPPER MOUNT
9	11-22178		2	NUT, STEERING ARM BOLT
10	1453-3466A1		1	SWIVEL BRACKET ASSEMBLY
11	26-37448		2	OIL SEAL, SWIVEL BRACKET
12	10-47828		1	SCREW, DRIVE - SWIVEL BRACKET
13	22-23612		1	FITTING, GREASE - SWIVEL BRACKET
14	29359		1	LUBRICAP, SWIVEL BRACKET GREASE FITTING
15	30664		1	TUBE, TILT - CLAMP BRACKET TO SWIVEL BRACKET
16	15-30497A1		AR	SHIM ASSEMBLY, CLAMP BRACKET TILT TUBE
17	11-30499		2	NUT, TILT TUBE FASTENTING
18	53078		2	CAP, PLASTIC - TILT TUBE
19	23-20222		1	SPACER, CLAMP BRACKET STUD
20	16-20221		1	STUD, CLAMP BRACKET
21	12-24812		2	WASHER, CLAMP BRACKET STUD
22	11-25594		2	NUT, CLAMP BRACKET STUD
23	10-49369		1	SCREW, TILT LOCK PIN (9-3/8")
24	12-37828		1	WASHER, TILT LOCK PIN SCREW
25	11-34932		1	NUT, TILT LOCK PIN SCREW
26	10-28009		2	BOLT, CLAMP BRACKET TO BOAT TRANSOM
27	12-28008		2	WASHER, CLAMP BRACKET BOLT
28	11-28010		2	NUT, CLAMP BRACKET BOLT
29	30126A1		1	TILT STOP LEVER ASSEMBLY
30	10-30128		2	SCREW, TILT STOP LEVER TO CLAMP BRACKET
31	13-31030		2	WASHER, WAVE - TILT STOP LEVER SCREW
32	11-46793		2	NUT, TILT STOP LEVER SCREW
33	55-49577		2	PIN, LOWER EYE BOLT MOUNTING
34	12-37429		1	WASHER, SWIVEL PIN
35	12-48926		2	WASHER, SWIVEL PIN
36	48884		1	YOKE, BOTTOM
37	11-37424		1	NUT, SWIVEL PIN RETAINING
38	10-48924		2	SCREW, YOKE TO DRIVE SHAFT HOUSING - LOWER (3-1/2")
39	12-24501		2	WASHER, YOKE SCREW
40	11-35000		2	NUT, YOKE SCREW
41	49982A1		2	EYE BOLT ASSEMBLY
42	10-28450		2	SCREW, NYLOK - LOWER EYE BOLT MOUNTING PIN
43	12-28421		2	WASHER, LOWER BUSHING RETAINER

CONTINUED ON NEXT PAGE ➡

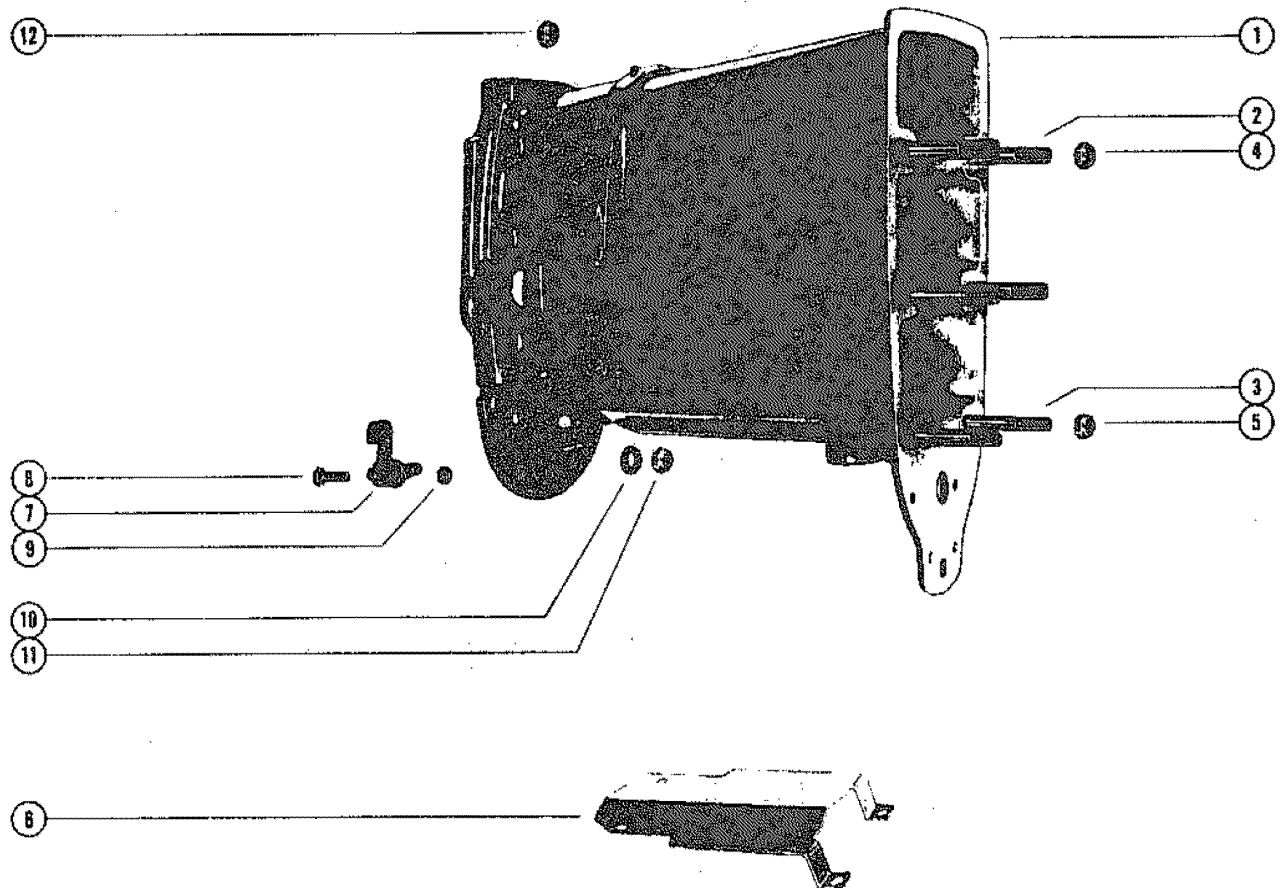
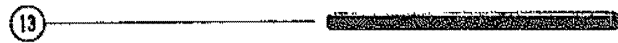
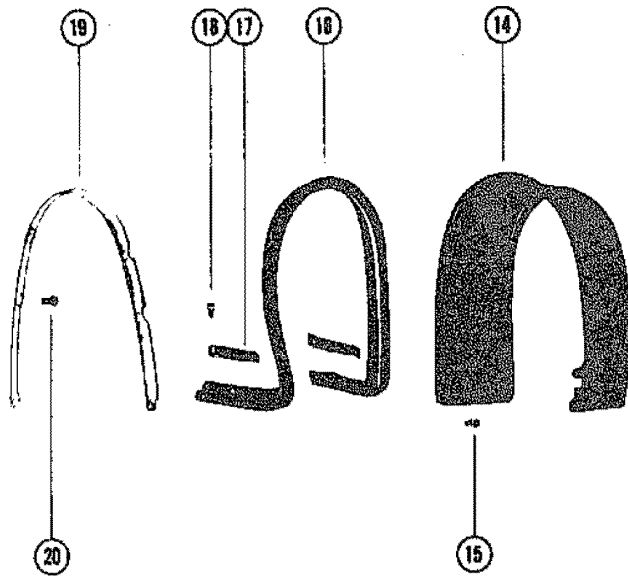
CLAMP AND SWIVEL BRACKET ASSEMBLY



CLAMP AND SWIVEL BRACKET ASSEMBLY

REF. NO.	PART NO.	SYM.	QTY.	DESCRIPTION
44	23-28198		4	BUSHING, RUBBER - EYE BOLT
45	11-20739		4	NUT, EYE BOLT
46	12-52601		4	WASHER, PLAIN - EYE BOLT
47	27-49985		4	GASKET, EYE BOLT (3/16" NEOPRENE)
48	12-49983		4	WASHER, CUPPED - EYE BOLT
49	27-49984		4	GASKET, EYE BOLT (1/2" NEOPRENE)
50	11-25599		2	NUT, EYE BOLT
51	52131		1	ROD, STEERING
52	23-52169		1	SLEEVE, STEERING ROD
53	12-20086		2	WASHER, STEERING ROD
54	11-20509		2	NUT, STEERING ROD

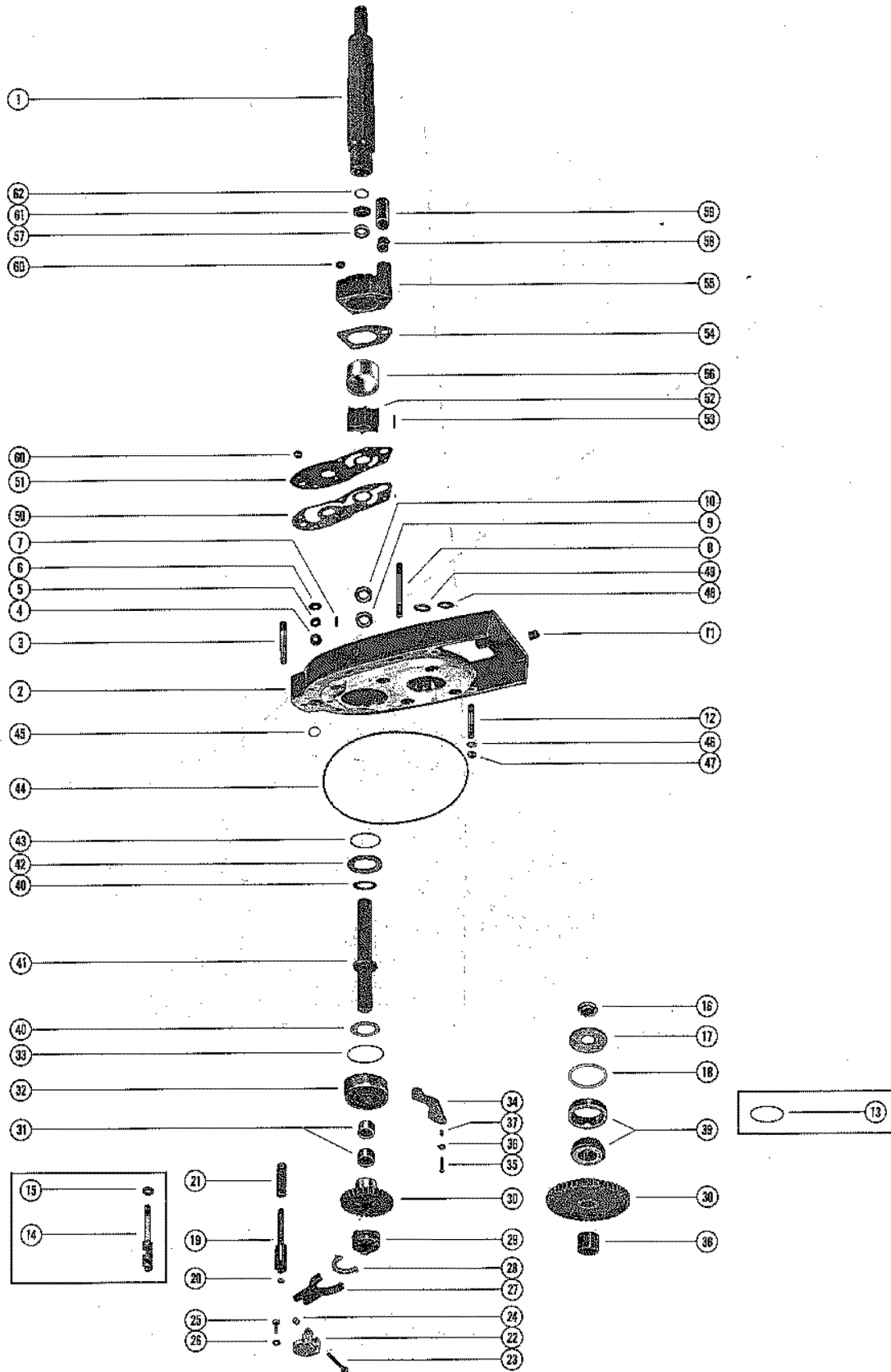
DRIVE SHAFT HOUSING ASSEMBLY



DRIVE SHAFT HOUSING ASSEMBLY

REF. NO.	PART NO.	SYM.	QTY.	DESCRIPTION
1	1568-3388A1		1	DRIVE SHAFT HOUSING ASSEMBLY
2	16-46911		4	STUD, DRIVE SHAFT HOUSING TO SPACER (3-3/16")
3	16-27879		2	STUD, DRIVE SHAFT HOUSING TO SPACER (3-1/16")
4	11-22178		4	NUT, DRIVE SHAFT HOUSING STUD (7/16" STUD)
5	11-23161		2	NUT, DRIVE SHAFT HOUSING STUD (3/8" STUD)
6	52107		1	PLATE, HEAT SHIELD
7	48921A1		1	SHIFT DETENT ASSEMBLY
8	10-21091		2	SCREW, SHIFT DETENT TO DRIVE SHAFT HOUSING (1-1/8")
9	11-20361		2	NUT, SHIFT DETENT SCREW
10	12-20086		8	WASHER, POWERHEAD STUDS
11	11-20509		2	NUT, POWERHEAD STUDS (3/8-24)
	11-23161		6	NUT, POWERHEAD STUDS (3/8-24)
12	11-21528		2	NUT, POWERHEAD STUDS (5/16-24)
13	32-48905		1	TUBE, WATER INLET
14	37417		1	COVER, TRIM - DRIVE SHAFT HOUSING
15	10-37571		4	SCREW, TRIM COVER TO BOTTOM COWL (1/2")
16	37919		1	SEAL, TRIM COVER TO DRIVE SHAFT HOUSING
17	37665		2	STRIP, RETAINING - TRIM COVER SEAL (SIDE)
18	10-48409		2	SCREW, RETAINING STRIP TO DRIVE SHAFT HOUSING (5/8")
19	38052		1	STRIP, RETAINING - TRIM COVER SEAL (REAR)
20	10-48408		6	SCREW, RETAINING STRIP TO DRIVE SHAFT HOUSING (1/2")

GEAR HOUSING ASSEMBLY, COMPLETE (PAGE 1)

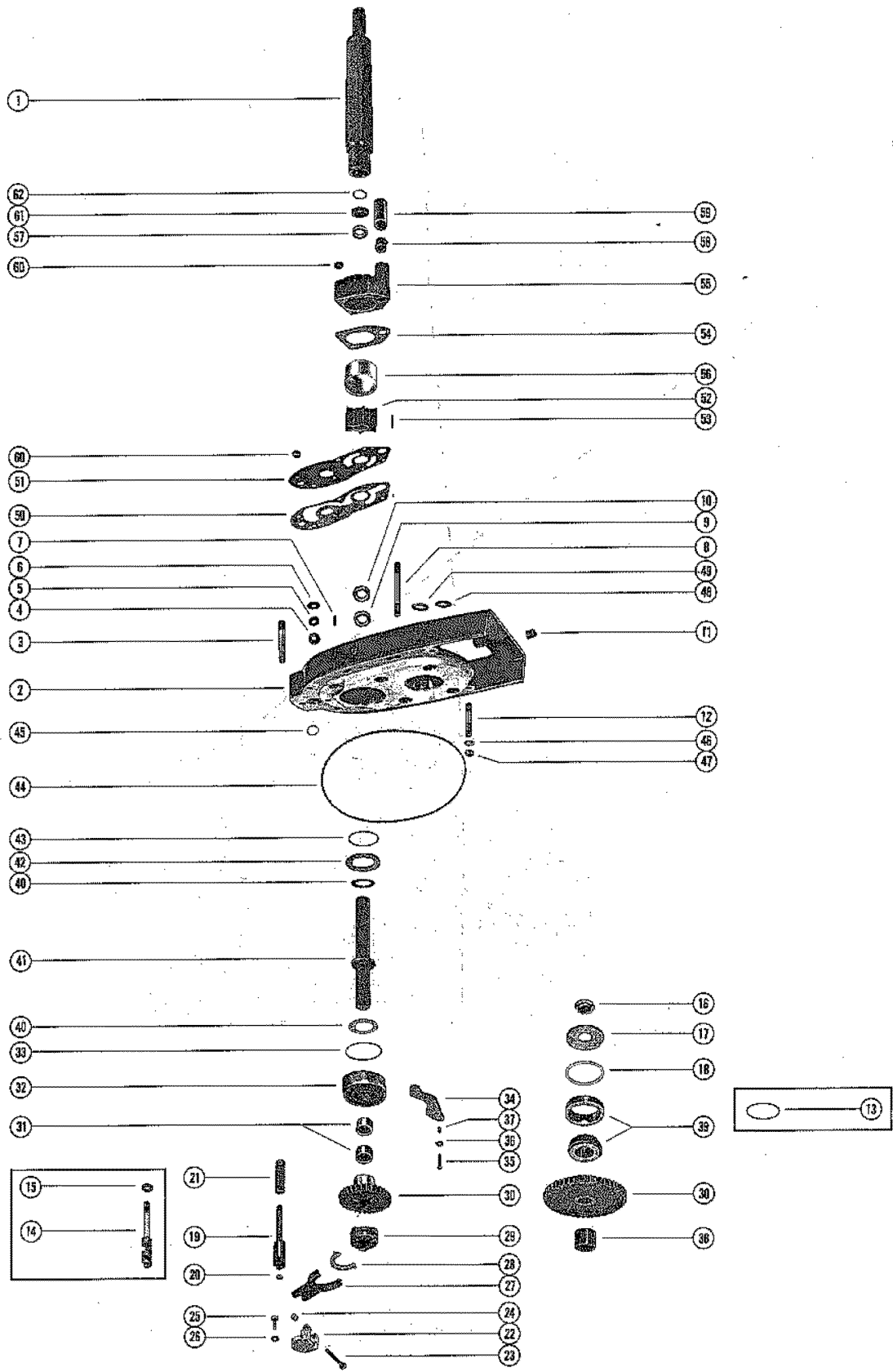


GEAR HOUSING ASSEMBLY, COMPLETE (PAGE 1)

REF. NO.	PART NO.	SYM.	QTY.	DESCRIPTION
1	52108A4		1	COUPLING ASSEMBLY, DRIVE SHAFT
-	1638-3389A7		1	GEAR HOUSING ASSEMBLY, COMPLETE RIGHT HAND ROTATION - MERC 1000BP - SEE NOTE BELOW
-	1638-3389A6		1	GEAR HOUSING ASSEMBLY, COMPLETE LEFT HAND ROTATION - MERC 1000BP - SEE NOTE BELOW
-	1638-3389A4		1	GEAR HOUSING ASSEMBLY, COMPLETE RIGHT HAND ROTATION - MERC 1250BP - SEE NOTE BELOW
-	1638-3389A5		1	GEAR HOUSING ASSEMBLY, COMPLETE (LEFT HAND ROTATION - MERC 1250BP - SEE NOTE BELOW
2	53281A3		1	SPACER ASSEMBLY, COMPLETE
3	23365		4	STUD, SPACER TO FACE PLATE (1-1/8")
4	26-24590		1	OIL SEAL, SHIFT SHAFT - SPACER (1-9/16" O.D.)
5	26-31249		1	OIL SEAL, SHIFT SHAFT - SPACER (1-3/4" O.D.)
6	12-31266		1	WASHER, RUBBER - SHIFT SHAFT
7	17-35973		2	PIN, DOWEL - SPACER TO WATER PUMP
8	16-30717		4	STUD, SPACER TO WATER PUMP (2-7/16")
9	26-33144		1	OIL SEAL, SPACER - LOWER
10	26-31507		1	OIL SEAL, SPACER - UPPER
11	22-21290		2	PLUG, PIPE - SPACER
12	16-45198		6	STUD, SPACER TO GEAR HOUSING (2-1/16")
13	15-26320A1		AR	SHIM ASSEMBLY, DRIVEN GEAR BEARING TO SPACER NOT USED ON LATER ENGINES
14	48907		1	CAM, SHIFT NOT USED ON LATER ENGINES
15	15-48920A1		AR	SHIM ASSEMBLY, SHIFT CAM NOT USED ON LATER ENGINES
16	23-56358		1	SPACER, DRIVEN GEAR PART OF A-53281A3 SPACER ASSEMBLY
17	N.L.A.		1	WASHER, DRIVEN GEAR PART OF A-53281A3 SPACER ASSEMBLY
18	15-26320A1		1	SHIM ASSEMBLY, DRIVEN GEAR PART OF A-53281A3 SPACER ASSEMBLY
19	53276		1	CAM, SHIFT PART OF A-53281A3 SPACER ASSEMBLY
20	15-53278A1		AR	SHIM ASSMEBLY, SHIFT CAM PART OF A-53281A3 SPACER ASSEMBLY
21	24-53277		1	SPRING, SHIFT CAM PART OF A-53281A3 SPACER ASSEMBLY
22	48909		1	COVER, SHIFT PIVOT PART OF A-53281A3 SPACER ASSEMBLY
23	10-34298		1	SCREW, SHIFT FORK
24	11-20664		1	NUT, SHIFT FORK SCREW
25	10-53099		2	SCREW, PIVOT COVER TO GEAR HOUSING
26	13-26992		2	LOCKWASHER, SHIFT PIVOT COVER SCREW
27	48908		1	SHIFT FORK, SLIDING CLUTCH
28	48922		1	COLLAR, SHIFT - RATCHET
29	52-48906		1	RATCHET, SLIDING CLUTCH
30	43-48896A1		OPT.	GEAR ASSEMBLY, DRIVE (1:1 GEAR RATIO)

CONTINUED ON NEXT PAGE ➡

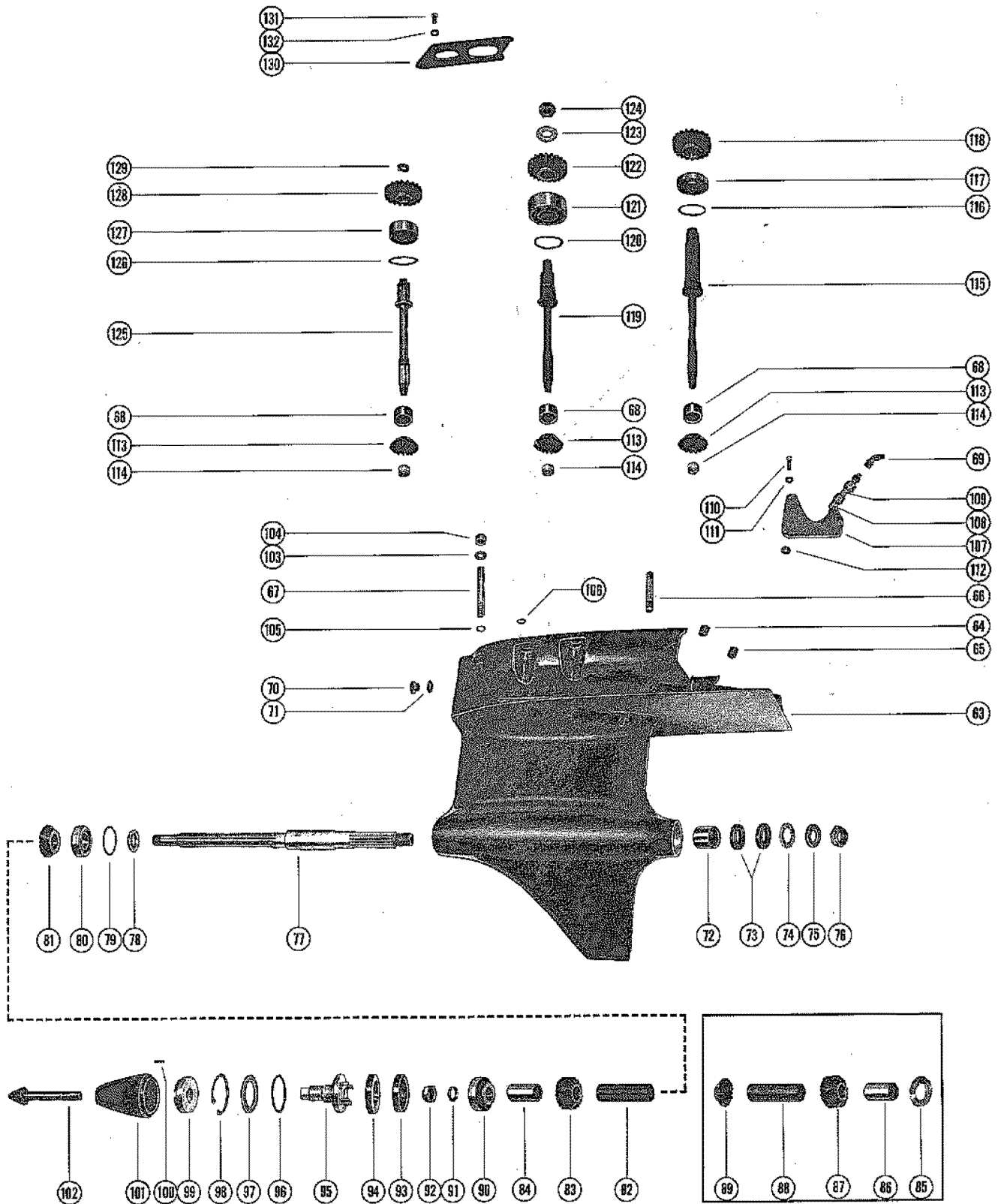
GEAR HOUSING ASSEMBLY, COMPLETE (PAGE 1)



GEAR HOUSING ASSEMBLY, COMPLETE (PAGE 1)

REF. NO.	PART NO.	SYM.	QTY.	DESCRIPTION
30	43-48897A1		OPT.	GEAR ASSEMBLY, DRIVE (1.25:1 GEAR RATIO)
	43-48898A1		1	GEAR ASSEMBLY, DRIVE (1.5:1 GEAR RATIO) STANDARD ON MERC 1250BP
	43-48900A1		1	GEAR ASSEMBLY, DRIVE (1.75:1 GEAR RATIO) STANDARD ON MERC 1000BP
	43-48895A1		OPT.	GEAR ASSEMBLY, DRIVE (2:1 GEAR RATIO)
31	31-21700		2	ROLLER BEARING, DRIVE GEAR
32	30-48916		1	BALL BEARING, DRIVE GEAR
33	15-34810A1		AR	SHIM ASSEMBLY, DRIVE GEAR BEARING TO SPACER
34	48919		1	RETAINER, DRIVE SHAFT BEARING
35	10-20532		2	SCREW, RETAINER TO SPACER (1-1/8")
36	13-21272		2	LOCKWASHER, RETAINER SCREW
37	52172		2	MAGNET, RETAINER SCREW
38	23-48927		1	SPACER, DRIVEN GEAR
39	31-48941A1		1	ROLLER BEARING ASSEMBLY, TAPERED - DRIVEN GEAR
40	31-48913		2	BEARING, THRUST - DRIVE SHAFT
41	45-48877		1	DRIVE SHAFT, INPUT
42	12-48912		1	WASHER, THRUST - DRIVE SHAFT
43	15-53325A1		AR	SHIM ASSEMBLY, DRIVE GEAR BEARING TO SPACER
44	25-41010		1	"O" RING, ADAPTOR FLANGE
45	25-336		1	"O" RING, WATER INLET TUBE
46	12-32618		6	WASHER, GEAR HOUSING STUDS
47	11-22178		6	NUT, GEAR HOUSING STUDS
48	25-23554		2	"O" RING, DRIVE SHAFT HOUSING STUDS
49	25-38594		4	"O" RING, DRIVE SHAFT HOUSING STUDS
50	27-48892		1	GASKET, SPACER TO FACE PLATE
51	48893		1	PLATE, FACE - SPACER TO WATER PUMP
52	47-30221		1	IMPELLER, WATER PUMP
53	17-29967		1	PIN, IMPELLER DRIVING
54	27-48923		1	GASKET, FACE PLATE TO WATER PUMP
55	46-48881A1		1	WATER PUMP ASSEMBLY
56	30915		1	INSERT, WATER PUMP
57	26-31507		1	OIL SEAL, WATER PUMP
58	26-38970		1	SEAL, WATER PUMP INLET
59	23-29804		1	SLEEVE, WATER TUBE GUIDE
60	11-2031		8	NUT, WATER PUMP AND FACE PLATE STUDS
61	25-30271		1	SLINGER, WATER PUMP - DRIVE SHAFT
62	25-30613		1	"O" RING, DRIVE SHAFT - UPPER

GEAR HOUSING ASSEMBLY, COMPLETE (PAGE 2)

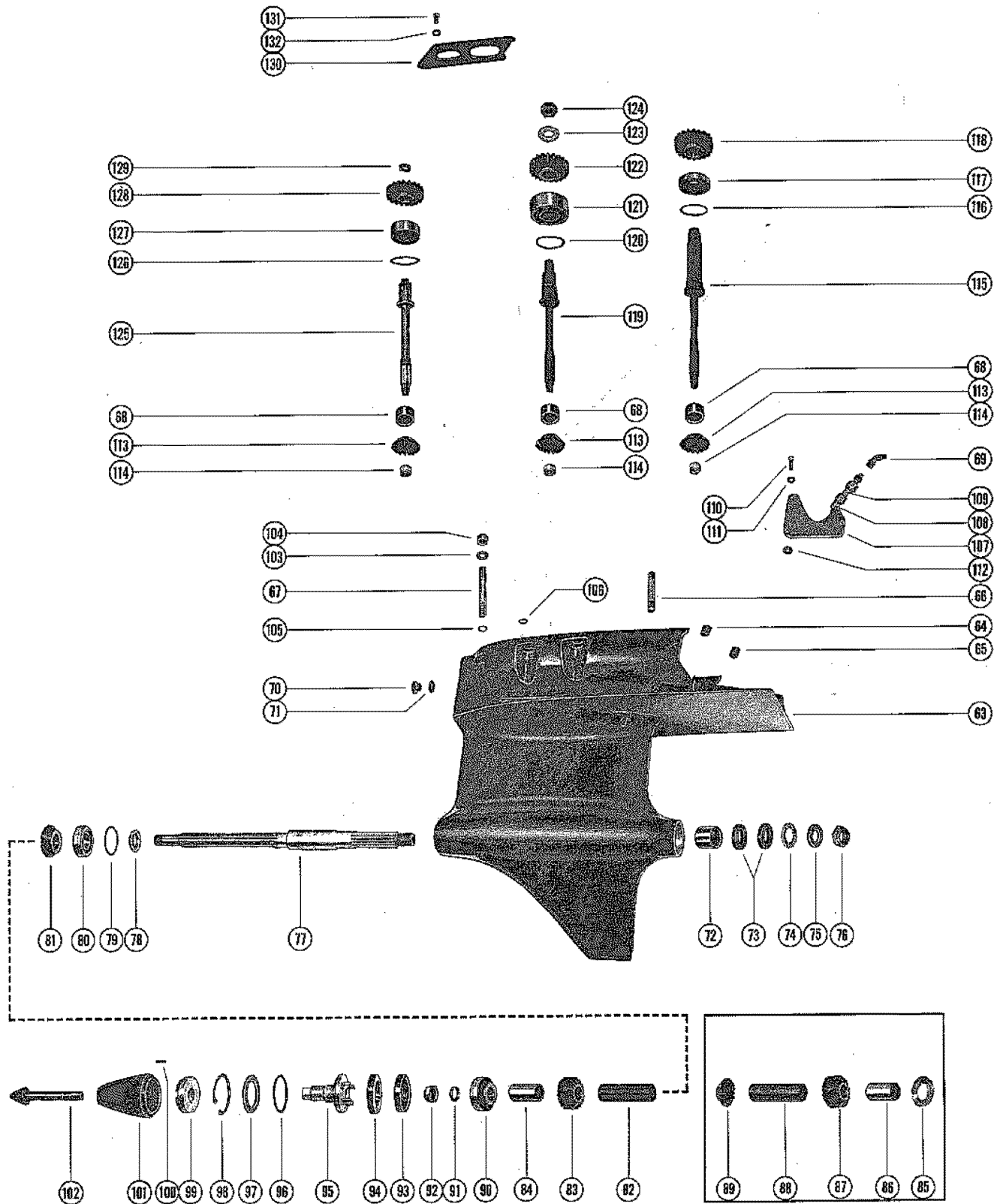


GEAR HOUSING ASSEMBLY, COMPLETE (PAGE 2)

REF. NO.	PART NO.	SYM.	QTY.	DESCRIPTION
-	1638-3389A7		1	GEAR HOUSING ASSEMBLY, COMPLETE RIGHT HAND ROTATION - MERC 1000BP - SEE NOTE BELOW
-	1638-3389A6		1	GEAR HOUSING ASSEMBLY, COMPLETE LEFT HAND ROTATION - MERC 1000BP - SEE NOTE BELOW
-	1638-3389A4		1	GEAR HOUSING ASSEMBLY, COMPLETE RIGHT HAND ROTATION - MERC 1250BP - SEE NOTE BELOW
-	1638-3389A5		1	GEAR HOUSING ASSEMBLY, COMPLETE LEFT HAND ROTATION - MERC 1250BP - SEE NOTE BELOW
63	1638-3389A1		1	GEAR HOUSING ASSEMBLY
64	22-20025		1	PLUG, PIPE (1/4-18 THREAD)
65	22-21290		2	PLUG, PIPE (1/8-27 THREAD)
66	16-32129		2	STUD, GEAR HOUSING TO SPACER (2-3/8")
67	16-49082		1	STUD, GEAR HOUSING TO SPACER (3-3/4")
68	31-48937		3	ROLLER BEARING, DRIVE SHAFT
69	22-49523		1	ELBOW, OIL TUBE (45 DEGREES)
70	10-28634		2	SCREW, VENT AND FILLING
71	12-20260		2	WASHER, SEALING - VENT AND FILLING SCREW
72	31-30956		1	ROLLER BEARING, PROPELLER SHAFT
73	26-55285		1	OIL SEAL, PROPELLER SHAFT
74	12-39701		1	WASHER, SPLINED - PROPELLER NUT
75	12-39698		1	WASHER, PLAIN - PROPELLER NUT
76	11-49252		1	NUT, PROPELLER
77	44-48882		1	PROPELLER SHAFT
78	12-48936		1	WASHER, PROPELLER SHAFT
79	15-20929A1		AR	SHIM ASSEMBLY, PROPELLER SHAFT
80	31-38146A1		1	ROLLER BEARING ASSEMBLY, TAPERED - REAR
81			1	GEAR, PROPELLER SHAFT - REAR RIGHT HAND ROTATION
82	23-48935		1	SPACER, PROPELLER SHAFT - LONG RIGHT HAND ROTATION
83			1	GEAR, DOUBLE BEVEL - PROPELLER SHAFT RIGHT HAND ROTATION
84	23-48934		1	SPACER, PROPELLER SHAFT - SHORT RIGHT HAND ROTATION
85	12-49808		1	WASHER, PROPELLER SHAFT LEFT HAND ROTATION
86	23-49809		1	SPACER, PROPELLER SHAFT - SHORT LEFT HAND ROTATION
87			1	GEAR, DOUBLE BEVEL - PROPELLER SHAFT LEFT HAND ROTATION
88	23-48935		1	SPACER, PROPELLER SHAFT - LONG LEFT HAND ROTATION
89	43-48949		1	GEAR, PROPELLER SHAFT LEFT HAND ROTATION
90	31-38135A1		1	ROLLER BEARING ASSEMBLY, TAPERED - PROPELLER SHAFT
91	12-48933		1	WASHER, PROPELLER SHAFT
92	11-39094		1	NUT, PROPELLER SHAFT

CONTINUED ON NEXT PAGE ➡

GEAR HOUSING ASSEMBLY, COMPLETE (PAGE 2)



GEAR HOUSING ASSEMBLY, COMPLETE (PAGE 2)

REF. NO.	PART NO.	SYM.	QTY.	DESCRIPTION
93	23-48932		1	SPACER, BEARING RETAINER TO GEAR HOUSING
94	11-48931		1	NUT, BEARING RETAINER
95	48942		1	ANCHOR STUD, BEARING RETAINER
96	25-30224		1	"O" RING, ANCHOR STUD
97	12-48930		1	WASHER, ANCHOR STUD
98	53-48928		1	RING, SNAP - ANCHOR STUD TO GEAR HOUSING
99	48929		1	COVER, GEAR HOUSING
100	17-30282		1	PIN, NOSE CONE LOCATING
101	48904		1	CONE, NOSE - GEAR HOUSING
102	10-39703		1	SCREW, NOSE CONE TO GEAR HOUSING
103	12-32648		3	WASHER, GEAR HOUSING STUDS
104	11-22178		3	NUT, GEAR HOUSING STUDS
105	25-45719		1	"O" RING, GEAR HOUSING STUDS
106	25-21836		1	"O" RING, SHIFT COVER
107	49526A1		1	PLATE ASSEMBLY, COVER
108	22-49521		1	ELBOW, PLATE TO OIL TUBE (90 DEGREES)
109	32-52170		1	TUBE, OIL - GEAR HOUSING TO COVER PLATE
110	10-49527		2	SCREW, COVER PLATE TO GEAR HOUSING (1")
111	13-21272		2	LOCKWASHER, COVER PLATE SCREW
112	12-31760		8	WASHER, COVER PLATE SCREW
113			3	GEAR, PINION - DRIVE SHAFT (LOWER)
114	11-49253		3	NUT, LOCK - PINION GEAR TO DRIVE SHAFT*
115	45-48880		1	DRIVE SHAFT, REAR
116	15-38657A1		AR	SHIM ASSEMBLY, REAR DRIVE SHAFT
117	31-48939A1		1	ROLLER BEARING ASSEMBLY, TAPERED - REAR DRIVE SHAFT
118	43-48887A1		1	GEAR ASSEMBLY, DRIVE SHAFTS
119	45-48879		1	DRIVE SHAFT, CENTER
120	15-24542A1		AR	SHIM ASSEMBLY, CENTER DRIVE SHAFT
121	30-53280		1	BALL BEARING, CENTER DRIVE SHAFT
122			1	GEAR, DRIVE SHAFT
123	12-35981		1	WASHER, CENTER DRIVE SHAFT
124	11-22339		1	NUT, GEAR TO CENTER DRIVE SHAFT
125	45-48878		1	DRIVE SHAFT, FRONT
126	15-20929A1		AR	SHIM ASSEMBLY, FRONT DRIVE SHAFT
127	30-53279		1	BALL BEARING, FRONT DRIVE SHAFT
128			1	GEAR, DRIVE SHAFT
129	11-30932		1	NUT, GEAR TO FRONT DRIVE SHAFT
130	48891		1	RETAINER, BEARING
131	10-53099		6	SCREW, BEARING RETAINER TO GEAR HOUSE (3/4")
132	13-26992		6	LOCKWASHER, BEARING RETAINER SCREW

PARTS INDEX

Part Number	Description	Pg.	Ref. No.	Part Number	Description	Pg.	Ref. No.
23365	STUD, SPACER TO FACE PLATE (1-1/8")	9	3	10-28009	BOLT, CLAMP BRACKET TO BOAT TRANSOM	3	26
28403A3	THUMB SCREW ASSEMBLY	3	2	10-28450	SCREW, NYLOK - LOWER EYE BOLT MOUNTING PIN	3	42
29359	LUBRICAP, SWIVEL BRACKET GREASE FITTING	3	14	10-28634	SCREW, VENT AND FILLING	13	70
30126A1	TILT STOP LEVER ASSEMBLY	3	29	10-30128	SCREW, TILT STOP LEVER TO CLAMP BRACKET	3	30
30664	TUBE, TILT - CLAMP BRACKET TO SWIVEL BRACKET	3	15	10-34298	SCREW, SHIFT FORK	9	23
30915	INSERT, WATER PUMP	11	56	10-37571	SCREW, TRIM COVER TO BOTTOM COWL (1/2")	7	15
37417	COVER, TRIM - DRIVE SHAFT HOUSING	7	14	10-39703	SCREW, NOSE CONE TO GEAR HOUSING	15	102
37665	STRIP, RETAINING - TRIM COVER SEAL (SIDE)	7	17	10-47828	SCREW, DRIVE - SWIVEL BRACKET	3	12
37919	SEAL, TRIM COVER TO DRIVE SHAFT HOUSING	7	16	10-48408	SCREW, RETAINING STRIP TO DRIVE SHAFT HOUSING (1/2")	7	20
38052	STRIP, RETAINING - TRIM COVER SEAL (REAR)	7	19	10-48409	SCREW, RETAINING STRIP TO DRIVE SHAFT HOUSING (5/8")	7	18
48884	YOKE, BOTTOM	3	36	10-48924	SCREW, YOKE TO DRIVE SHAFT HOUSING - LOWER (3-1/2")	3	38
48891	RETAINER, BEARING	15	130	10-49369	SCREW, TILT LOCK PIN (9- 3/8")	3	23
48893	PLATE, FACE - SPACER TO WATER PUMP	11	51	10-49373	BOLT, STEERING ARM TO UPPER MOUNT	3	8
48904	CONE, NOSE - GEAR HOUSING	15	101	10-49527	SCREW, COVER PLATE TO GEAR HOUSING (1")	15	110
48907	CAM, SHIFT	9	14	10-53099	SCREW, BEARING RETAINER TO GEAR HOUSE (3/4")	15	131
48908	SHIFT FORK, SLIDING CLUTCH	9	27	10-53099	SCREW, PIVOT COVER TO GEAR HOUSING	9	25
48909	COVER, SHIFT PIVOT	9	22	11-2031	NUT, WATER PUMP AND FACE PLATE STUDS	11	60
48919	RETAINER, DRIVE SHAFT BEARING	11	34	11-20361	NUT, SHIFT DETENT SCREW	7	9
48921A1	SHIFT DETENT ASSEMBLY	7	7	11-20509	NUT, POWERHEAD STUDS (3/8-24)	7	11
48922	COLLAR, SHIFT - RATCHET	9	28	11-20509	NUT, STEERING ROD	5	54
48929	COVER, GEAR HOUSING	15	99	11-20664	NUT, SHIFT FORK SCREW	9	24
48942	ANCHOR STUD, BEARING RETAINER	15	95	11-20739	NUT, EYE BOLT	5	45
49248A1	REVERSE THROTTLE LIMIT KIT	1	-	11-21528	NUT, POWERHEAD STUDS (5/16-24)	7	12
49526A1	PLATE ASSEMBLY, COVER	15	107	11-22178	NUT, DRIVE SHAFT HOUSING STUD (7/16" STUD)	7	4
49982A1	EYE BOLT ASSEMBLY	3	41	11-22178	NUT, GEAR HOUSING STUDS	11	47
52107	PLATE, HEAT SHIELD	7	6	11-22178	NUT, GEAR HOUSING STUDS	15	104
52108A4	COUPLING ASSEMBLY, DRIVE SHAFT	9	1	11-22178	NUT, STEERING ARM BOLT	3	9
52131	ROD, STEERING	5	51	11-22339	NUT, GEAR TO CENTER DRIVE SHAFT	15	124
52172	MAGNET, RETAINER SCREW	11	37	11-23161	NUT, DRIVE SHAFT HOUSING STUD (3/8" STUD)	7	5
53078	CAP, PLASTIC - TILT TUBE	3	18	11-23161	NUT, POWERHEAD STUDS (3/8-24)	7	11
53276	CAM, SHIFT	9	19				
53281A3	SPACER ASSEMBLY, COMPLETE	9	2				
53667A1	TACHOMETER ASSEMBLY	1	-				
N.L.A.	WASHER, DRIVEN GEAR	9	17				
10-20532	SCREW, RETAINER TO SPACER (1-1/8")	11	35				
10-21091	SCREW, SHIFT DETENT TO DRIVE SHAFT HOUSING (1-1/8")	7	8				
10-25612	SCREW, SERIAL PLATE TO SWIVEL BRACKET	3	5				

PARTS INDEX

Part Number	Description	Pg.	Ref. No.	Part Number	Description	Pg.	Ref. No.
11-25594	NUT, CLAMP BRACKET			12-49983	WASHER, CUPPED - EYE		
	STUD	3	22		BOLT	5	48
11-25599	NUT, EYE BOLT	5	50	12-52601	WASHER, PLAIN - EYE BOLT	5	46
11-28010	NUT, CLAMP BRACKET			13-21272	LOCKWASHER, COVER		
	BOLT	3	28		PLATE SCREW	15	111
11-30499	NUT, TILT TUBE			13-21272	LOCKWASHER, RETAINER		
	FASTENTING	3	17		SCREW	11	36
11-30932	NUT, GEAR TO FRONT			13-26992	LOCKWASHER, BEARING		
	DRIVE SHAFT	15	129		RETAINER SCREW	15	132
11-34932	NUT, TILT LOCK PIN SCREW	3	25	13-26992	LOCKWASHER, SHIFT		
11-35000	NUT, YOKE SCREW	3	40		PIVOT COVER SCREW	9	26
11-37424	NUT, SWIVEL PIN			13-31030	WASHER, WAVE - TILT		
	RETAINING	3	37		STOP LEVER SCREW	3	31
11-39094	NUT, PROPELLER SHAFT	13	92	15-20929A1	SHIM ASSEMBLY, FRONT		
11-46793	NUT, TILT STOP LEVER				DRIVE SHAFT	15	126
	SCREW	3	32	15-20929A1	SHIM ASSEMBLY,		
11-48931	NUT, BEARING RETAINER	15	94		PROPELLER SHAFT	13	79
11-49252	NUT, PROPELLER	13	76	15-24542A1	SHIM ASSEMBLY, CENTER		
11-49253	NUT, LOCK - PINION GEAR				DRIVE SHAFT	15	120
	TO DRIVE SHAFT*	15	114	15-26320A1	SHIM ASSEMBLY, DRIVEN		
12-20086	WASHER, POWERHEAD				GEAR	9	18
	STUDS	7	10	15-26320A1	SHIM ASSEMBLY, DRIVEN		
12-20086	WASHER, STEERING ROD	5	53		GEAR BEARING TO		
12-20260	WASHER, SEALING - VENT				SPACER	9	13
	AND FILLING SCREW	13	71	15-30497A1	SHIM ASSEMBLY, CLAMP		
12-24501	WASHER, YOKE SCREW	3	39		BRACKET TILT TUBE	3	16
12-24812	WASHER, CLAMP BRACKET			15-34810A1	SHIM ASSEMBLY, DRIVE		
	STUD	3	21		GEAR BEARING TO		
12-28008	WASHER, CLAMP BRACKET				SPACER	11	33
	BOLT	3	27	15-38657A1	SHIM ASSEMBLY, REAR		
12-28404	WASHER, THUMB SCREW	3	3		DRIVE SHAFT	15	116
12-28421	WASHER, LOWER BUSHING			15-48920A1	SHIM ASSEMBLY, SHIFT		
	RETAINER	3	43		CAM	9	15
12-31266	WASHER, RUBBER - SHIFT			15-53278A1	SHIM ASSMEBLY, SHIFT		
	SHAFT	9	6		CAM	9	20
12-31760	WASHER, COVER PLATE			15-53325A1	SHIM ASSEMBLY, DRIVE		
	SCREW	15	112		GEAR BEARIING TO		
12-32618	WASHER, GEAR HOUSING				SPACER	11	43
	STUDS	11	46	16-20221	STUD, CLAMP BRACKET	3	20
12-32648	WASHER, GEAR HOUSING			16-27879	STUD, DRIVE SHAFT		
	STUDS	15	103		HOUSING TO SPACER (3-		
12-35981	WASHER, CENTER DRIVE				1/16")	7	3
	SHAFT	15	123	16-30717	STUD, SPACER TO WATER		
12-37429	WASHER, SWIVEL PIN	3	34		PUMP (2-7/16")	9	8
12-37828	WASHER, TILT LOCK PIN			16-32129	STUD, GEAR HOUSING TO		
	SCREW	3	24		SPACER (2-3/8")	13	66
12-39698	WASHER, PLAIN -			16-45198	STUD, SPACER TO GEAR		
	PROPELLER NUT	13	75		HOUSING (2-1/16")	9	12
12-39701	WASHER, SPLINED -			16-46911	STUD, DRIVE SHAFT		
	PROPELLER NUT	13	74		HOUSING TO SPACER (3-		
12-48912	WASHER, THRUST - DRIVE				3/16")	7	2
	SHAFT	11	42	16-49082	STUD, GEAR HOUSING TO		
12-48926	WASHER, SWIVEL PIN	3	35		SPACER (3-3/4")	13	67
12-48930	WASHER, ANCHOR STUD	15	97	17-29967	PIN, IMPELLER DRIVING	11	53
12-48933	WASHER, PROPELLER			17-30282	PIN, NOSE CONE LOCATING	15	100
	SHAFT	13	91	17-35973	PIN, DOWEL - SPACER TO		
12-48936	WASHER, PROPELLER				WATER PUMP	9	7
	SHAFT	13	78	17-48883A1	SWIVEL PIN AND STEERING		
12-49808	WASHER, PROPELLER				ARM ASSEMBLY	3	6
	SHAFT	13	85	22-20025	PLUG, PIPE (1/4-18 THREAD)	13	64

PARTS INDEX

Part Number	Description	Pg.	Ref. No.	Part Number	Description	Pg.	Ref. No.
22-21290	PLUG, PIPE (1/8-27 THREAD)	13	65	27-48923	GASKET, FACE PLATE TO WATER PUMP	11	54
22-21290	PLUG, PIPE - SPACER	9	11	27-49984	GASKET, EYE BOLT (1/2" NEOPRENE)	5	49
22-23612	FITTING, GREASE - SWIVEL BRACKET	3	13	27-49985	GASKET, EYE BOLT (3/16" NEOPRENE)	5	47
22-49521	ELBOW, PLATE TO OIL TUBE (90 DEGREES)	15	108	30-48916	BALL BEARING, DRIVE GEAR	11	32
22-49523	ELBOW, OIL TUBE (45 DEGREES)	13	69	30-53279	BALL BEARING, FRONT DRIVE SHAFT	15	127
23-20222	SPACER, CLAMP BRACKET STUD	3	19	30-53280	BALL BEARING, CENTER DRIVE SHAFT	15	121
23-28198	BUSHING, RUBBER - EYE BOLT	5	44	31-21700	ROLLER BEARING, DRIVE GEAR	11	31
23-29804	SLEEVE, WATER TUBE GUIDE	11	59	31-30956	ROLLER BEARING, PROPELLER SHAFT	13	72
23-48927	SPACER, DRIVEN GEAR	11	38	31-38135A1	ROLLER BEARING ASSEMBLY, TAPERED - PROPELLER SHAFT	13	90
23-48932	SPACER, BEARING RETAINER TO GEAR HOUSING	15	93	31-38146A1	ROLLER BEARING ASSEMBLY, TAPERED - REAR	13	80
23-48934	SPACER, PROPELLER SHAFT - SHORT	13	84	31-48913	BEARING, THRUST - DRIVE SHAFT	11	40
23-48935	SPACER, PROPELLER SHAFT - LONG	13	82	31-48937	ROLLER BEARING, DRIVE SHAFT	13	68
23-48935	SPACER, PROPELLER SHAFT - LONG	13	88	31-48939A1	ROLLER BEARING ASSEMBLY, TAPERED - REAR DRIVE SHAFT	15	117
23-49809	SPACER, PROPELLER SHAFT - SHORT	13	86	31-48941A1	ROLLER BEARING ASSEMBLY, TAPERED - DRIVEN GEAR	11	39
23-52169	SLEEVE, STEERING ROD	5	52	32-48905	TUBE, WATER INLET	7	13
23-56358	SPACER, DRIVEN GEAR	9	16	32-52170	TUBE, OIL - GEAR HOUSING TO COVER PLATE	15	109
24-53277	SPRING, SHIFT CAM	9	21	38-39784	SERIAL PLATE	3	4
25-21836	"O" RING, SHIFT COVER	15	106	43-48887A1	GEAR ASSEMBLY, DRIVE SHAFTS	15	118
25-23554	"O" RING, DRIVE SHAFT HOUSING STUDS	11	48	43-48895A1	GEAR ASSEMBLY, DRIVE (2:1 GEAR RATIO)	11	30
25-30224	"O" RING, ANCHOR STUD	15	96	43-48896A1	GEAR ASSEMBLY, DRIVE (1:1 GEAR RATIO)	9	30
25-30271	SLINGER, WATER PUMP - DRIVE SHAFT	11	61	43-48897A1	GEAR ASSEMBLY, DRIVE (1.25:1 GEAR RATIO)	11	30
25-30613	"O" RING, DRIVE SHAFT - UPPER	11	62	43-48898A1	GEAR ASSEMBLY, DRIVE (1.5:1 GEAR RATIO)	11	30
25-336	"O" RING, WATER INLET TUBE	11	45	43-48900A1	GEAR ASSEMBLY, DRIVE (1.75:1 GEAR RATIO)	11	30
25-38594	"O" RING, DRIVE SHAFT HOUSING STUDS	11	49	43-48949	GEAR, PROPELLER SHAFT	13	89
25-41010	"O" RING, ADAPTOR FLANGE	11	44	44-48882	PROPELLER SHAFT	13	77
25-45719	"O" RING, GEAR HOUSING STUDS	15	105	45-48877	DRIVE SHAFT, INPUT	11	41
26-24590	OIL SEAL, SHIFT SHAFT - SPACER (1-9/16" O.D.)	9	4	45-48878	DRIVE SHAFT, FRONT	15	125
26-31249	OIL SEAL, SHIFT SHAFT - SPACER (1-3/4" O.D.)	9	5	45-48879	DRIVE SHAFT, CENTER	15	119
26-31507	OIL SEAL, SPACER - UPPER	9	10	45-48880	DRIVE SHAFT, REAR	15	115
26-31507	OIL SEAL, WATER PUMP	11	57	46-48881A1	WATER PUMP ASSEMBLY	11	55
26-33144	OIL SEAL, SPACER - LOWER	9	9	47-30221	IMPELLER, WATER PUMP	11	52
26-37448	OIL SEAL, SWIVEL BRACKET	3	11	52-48906	RATCHET, SLIDING CLUTCH	9	29
26-38970	SEAL, WATER PUMP INLET	11	58	53-48928	RING, SNAP - ANCHOR STUD TO GEAR HOUSING	15	98
26-52924	SEAL, RUBBER - SWIVEL PIN	3	7				
26-55285	OIL SEAL, PROPELLER SHAFT	13	73				

PARTS INDEX

Part Number	Description	Pg.	Ref. No.	Part Number	Description	Pg.	Ref. No.
1440-3296A1	CLAMP BRACKET ASSEMBLY	3	1				
1453-3466A1	SWIVEL BRACKET ASSEMBLY	3	10				
1568-3388A1	DRIVE SHAFT HOUSING ASSEMBLY	7	1				
1570-3745A2	CONVERSION KIT (LONG SHAFT)	1	-				
1638-3389A1	GEAR HOUSING ASSEMBLY	13	63				
1638-3389A4	GEAR HOUSING ASSEMBLY, COMPLETE	9	-				
1638-3389A4	GEAR HOUSING ASSEMBLY, COMPLETE	13	--				
1638-3389A5	GEAR HOUSING ASSEMBLY, COMPLETE	9	-				
1638-3389A5	GEAR HOUSING ASSEMBLY, COMPLETE	13	--				
1638-3389A6	GEAR HOUSING ASSEMBLY, COMPLETE	9	-				
1638-3389A6	GEAR HOUSING ASSEMBLY, COMPLETE	13	--				
1638-3389A7	GEAR HOUSING ASSEMBLY, COMPLETE	9	-				
1638-3389A7	GEAR HOUSING ASSEMBLY, COMPLETE	13	--				