



PARTS CATALOG

30 HP

SERIAL NUMBER

30A	M 689-230101 AND UP
30A	E 689-250101 AND UP
30A	ML 689-530101 AND UP
30A	EL 689-550101 AND UP

TABLE OF CONTENTS:

AUTO-BLEND	54
BOTTOM COWL	4
C.D.I MAGNETO	10
C.D.I. IGNITION COMPONENTS	12
CARBURETOR	28
CLAMP AND SWIVEL BRACKET/REVERSE LOCK	38
CRANKCASE AND CYLINDER HEAD	18
CRANKSHAFT AND PISTON	20
DRIVESHAFT HOUSING	44
ELECTRIC START COMPONENTS	14
ELECTRIC START MOTOR	16
FUEL PUMP, FUEL LINES AND FILTER	30
FUEL TANK AND FUEL LINE ASSEMBLY	52
FUEL TANK AND FUEL LINE ASSEMBLY (NOT ORIG EQUIPMENT TANK)	58
GEAR HOUSING ASSEMBLY	46
GEAR SHIFT LINKAGE	36
INTAKE MANIFOLD	22
MOUNTING SYSTEM	42
OIL PUMP	24
PARTS INDEX	62
PROP CHART	60
RECOIL STARTER	6
REMOTE CONTROL ATTACHING KIT	56
STEERING HANDLE AND THROTTLE CONTROL	32
TOP COWL	2

NOTE: Indented description indicate that these parts are included in preceding assembly.

AR = As Required

NSS = Not Sold Separate

OPT = Optional

NS = Not Shown

NOTE: Following symbols are located in **SYM** column.

● = COMPONENT OF POWERHEAD GASKET SET [27-96658] (MANUAL) ; [27-811996M] (ELECTRIC)

◇ = COMPONENT OF WATER REPAIR KIT [95661M]

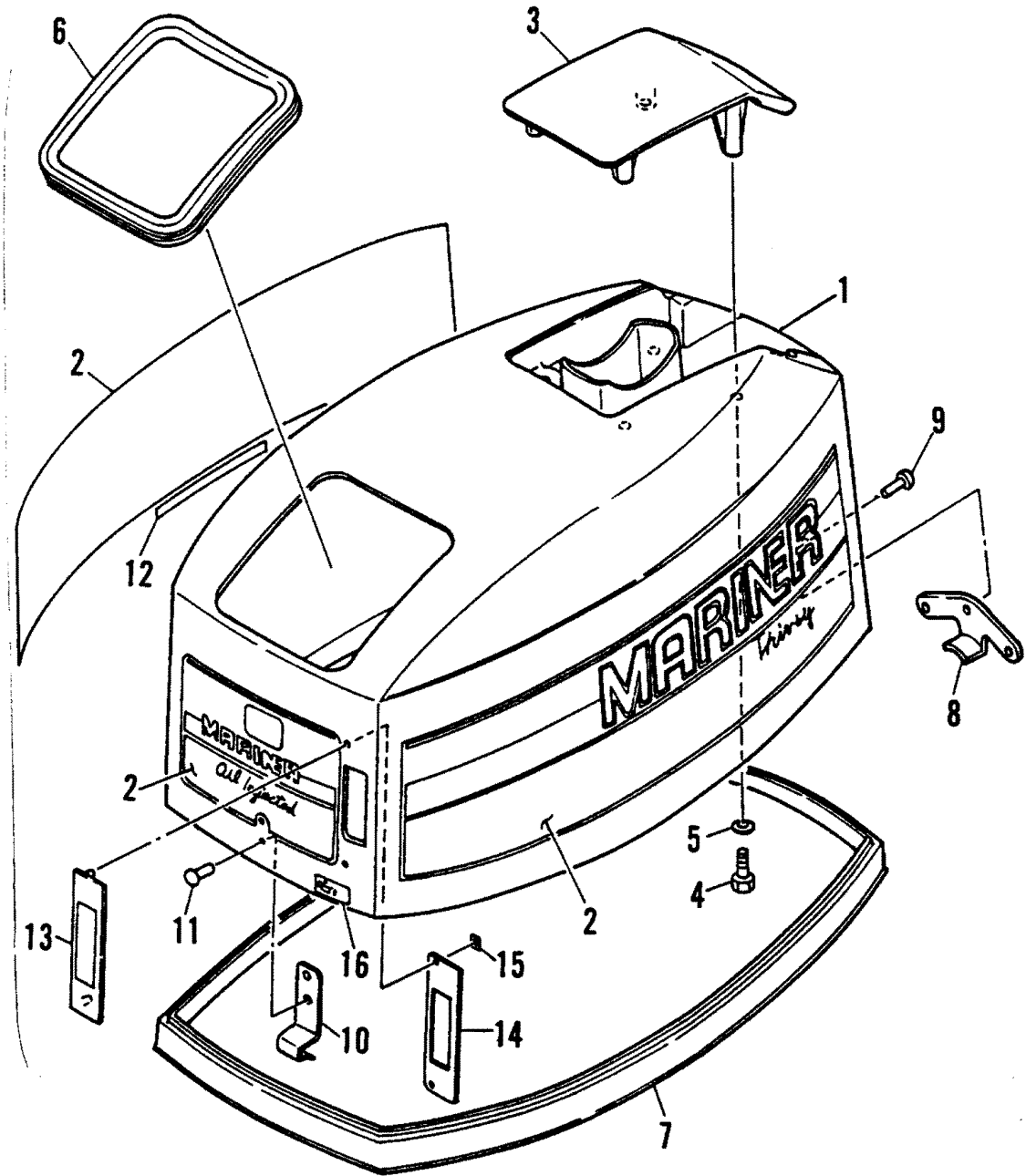
■ = COMPONENT OF CARBURETOR REPAIR KIT [811038M]

▲ = COMPONENT OF LOWER UNIT GASKET SET [27-95660M]

THESE PARTS BOOKS/FICHE CARD ARE COPYRIGHTED AND MAY NOT BE DISTRIBUTED OR REPRODUCED IN ANY OTHER FORMAT BY ANYONE OTHER THAN MERCURY MARINE WITHOUT THE PRIOR WRITTEN CONSENT OF MERCURY MARINE.

THIS PAGE INTENTIONALLY LEFT BLANK

TOP COWL

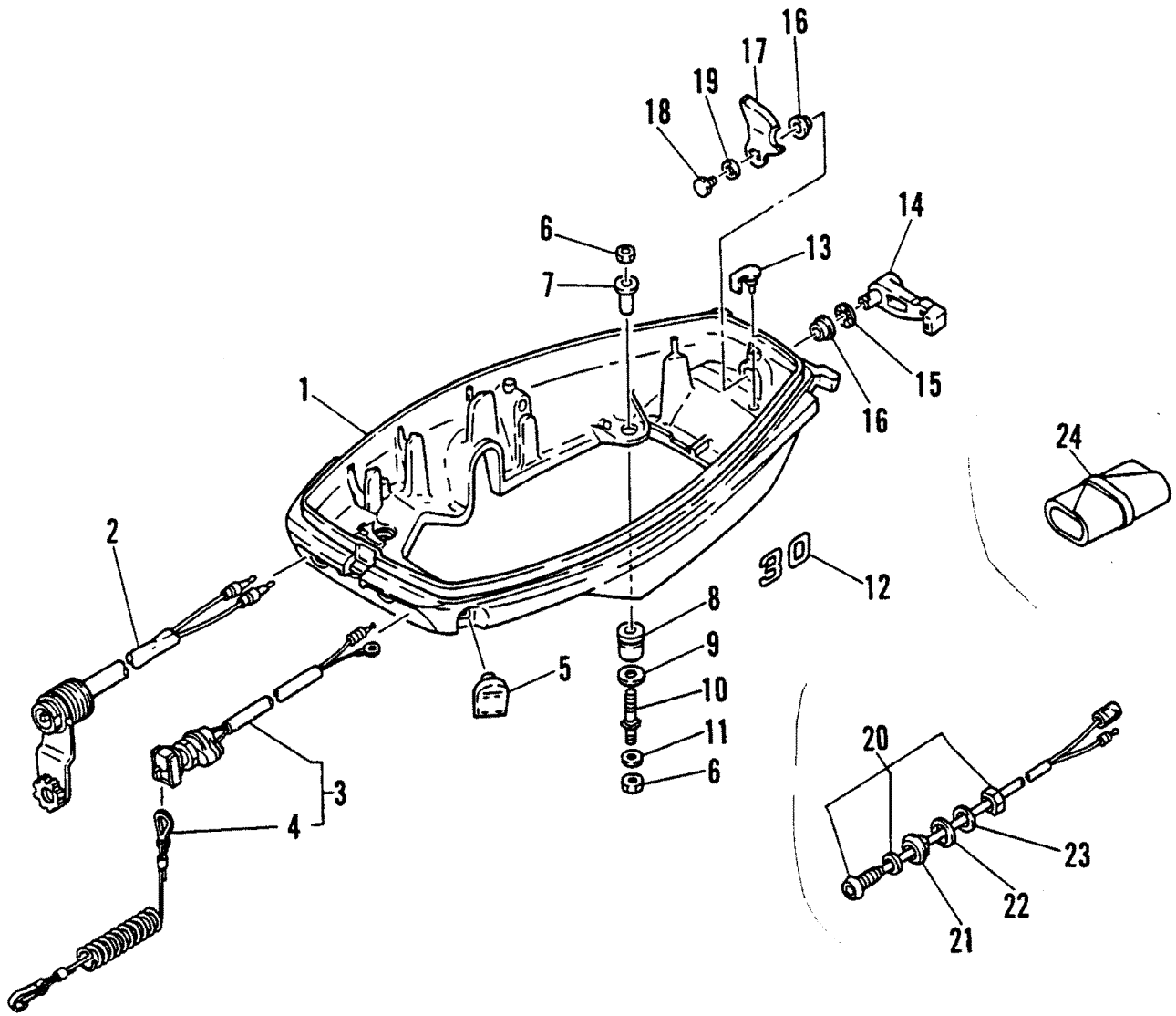


TOP COWL

REF. NO.	PART NO.	SYM.	QTY.	DESCRIPTION
1	2168-811159M		1	TOP COWL (ELECTRIC)
	2168-811158M		1	TOP COWL (MANUAL)
2	37-810934A92		1	DECAL SET
3	95676M		1	MOLDING
4	10-91772M		4	BOLT
5	12-82214M		4	WASHER
6	84900M		1	SEAL
7	84901M		1	SEAL
8	42433M		1	HOOK (REAR)
9	17-84903M		3	RIVET
10	811160M		1	HOOK (FRONT)
11	17-83140M		2	RIVET
12	37-81202M		1	DECAL (Shift Indicator)
13	811161M		1	WINDOW (Electric)
14	27-811162M		1	GASKET (Electric)
15	11-814523M		2	SPEED NUT (Electric)
16	37-814527M		1	DECAL (Electric)

RECOMMENDED TRANSOM HEIGHT: STANDARD 15", LONG SHAFT 20"

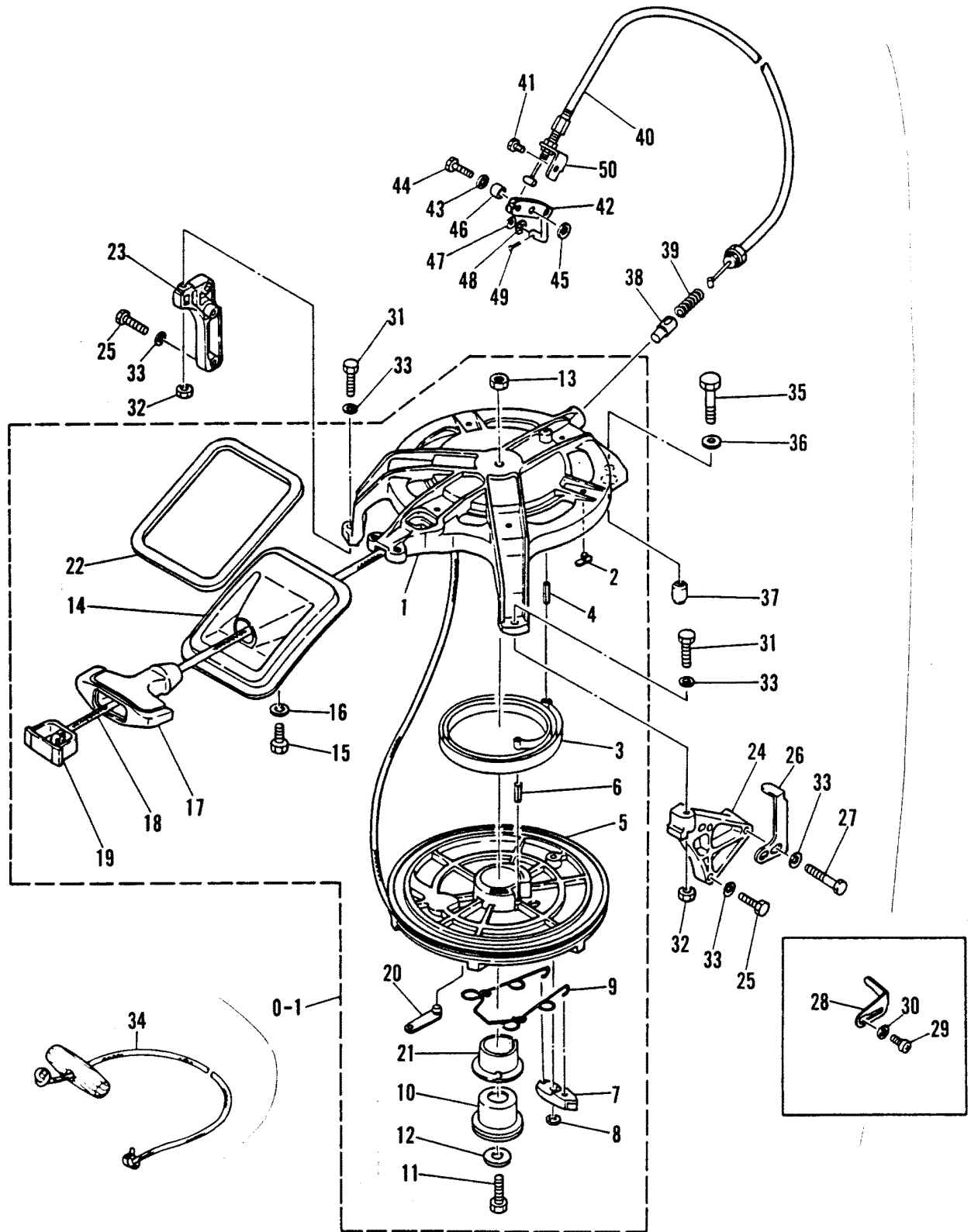
BOTTOM COWL



BOTTOM COWL

REF. NO.	PART NO.	SYM.	QTY.	DESCRIPTION
1	2168-814530M		1	BOTTOM COWL NOTE #1 M-689-121775 & BELOW ML-689-432960 & BELOW E-689-250855 & BELOW EL-689-551575 & BELOW
	2168-811913M		1	BOTTOM COWL NOTE #2 M-689-232776 ML-689-532961 & UP E-689-250856 & UP EL-689-551576
2	84-99051M		1	LEAD EXTENSION
3	87-14227M		1	LANYARD IGNITION SWITCH
4	97756M		1	STOPPER
5	25-84915M		1	GROMMET
6	11-82383M		8	NUT
7	23-84911M		4	COLLAR
9	25-84910M		4	GROMMET
	12-95507M		4	WASHER
10	16-95505M		4	STUD
11	12-82217M		4	WASHER
12	37-42434M		2	DECAL (HP)-
13	80510M		1	SPACER
14	84913M		1	LEVER
15	13-81869M		1	WAVE WASHER
16	23-81949M		2	BUSHING
17	54-84914M		1	CLAMP
18	10-84315M		1	BOLT
19	12-81794M		1	WASHER
20	41308M		1	EMERGENCY SIGNAL - ELECTRIC
21	81163M		1	HOLDER - ELECTRIC
22	27-811164M		1	GASKET - ELECTRIC
23	12-83524M		1	WASHER - ELECTRIC
24	91-81669M		1	TOOL KIT

RECOIL STARTER



RECOIL STARTER

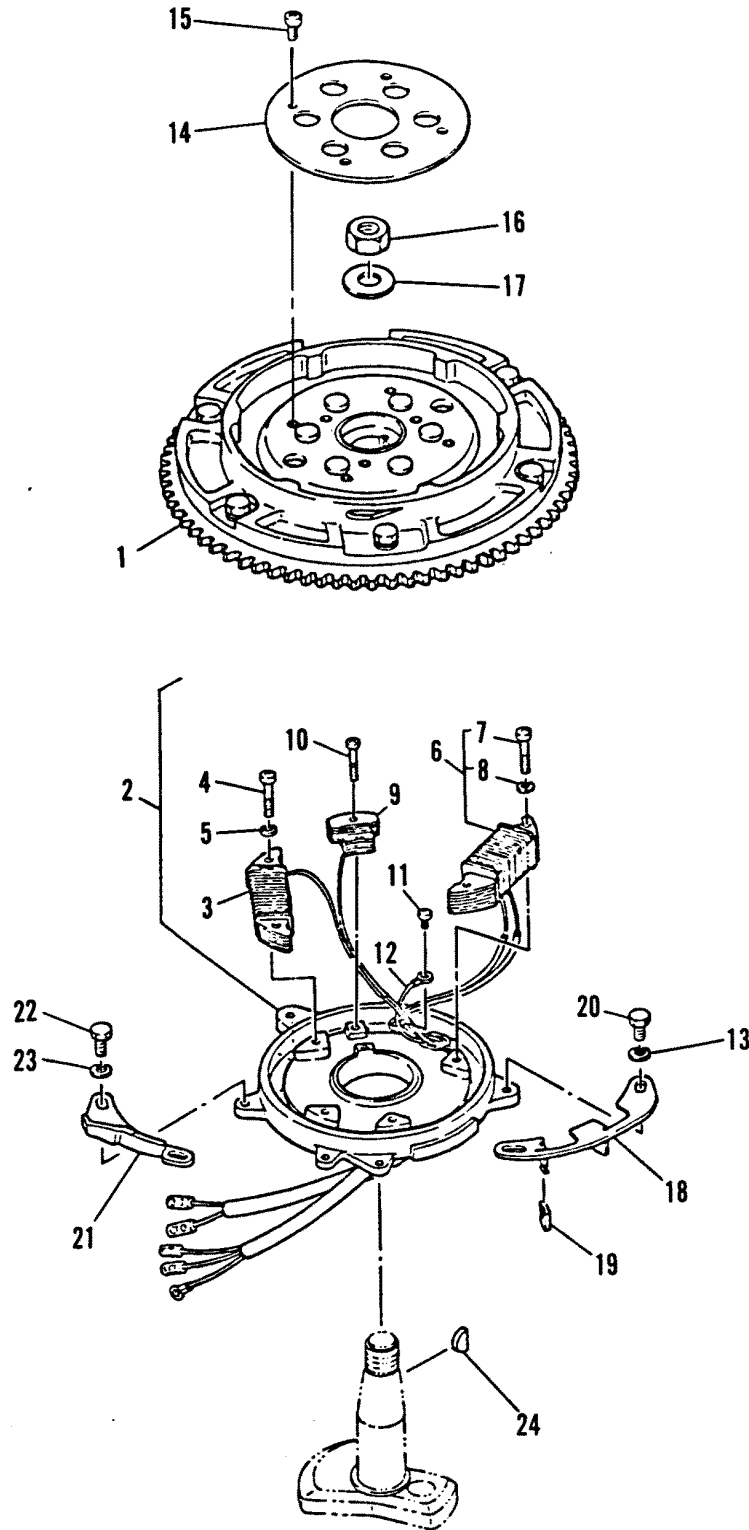
REF. NO.	PART NO.	SYM.	QTY.	DESCRIPTION
0-1	50-19137M		1	STARTER ASSEMBLY
1	2169-7102M		1	HOUSING NOTE #1 M-689-232775 & BELOW ML-689-532960 & BELOW E-689-250855 & BELOW EL-689-551575 & BELOW
	2169-811912M		1	HOUSING NOTE #2 M-689-232776 & UP ML-689-532961 & UP E-689-250856 & UP EL-689-551576 & UP
2	23-83585M		6	PLUG
3	24-83588M		1	SPRING
4	17-41267M		1	PIN
5	50-83587M		1	STARTER SHEAVE
6	17-41267M		1	ROLL PIN
7	84894M		1	PAUL
8	53-84895M		1	SNAP RING
9	24-83591M		1	SPRING
10	23-83590M		1	SHAFT
11	10-84342M		1	BOLT
12	12-81801M		1	WASHER
13	11-82382M		1	NUT
14	84890M		1	GUIDE
15	10-84247M		2	BOLT
16	12-82214M		2	WASHER
17	814491M		1	HANDLE
18	50-12066A9		1	STARTER ROPE
19	814492M		1	COVER
20	54-84893M		1	CLIP
21	23-83589M		1	BUSHING
22	84891M		1	SEAL
23	811135M		1	BRACKET (STARBOARD)
24	84466M		1	BRACKET (PORT)
25	10-82405M		4	BOLT
26	96341M		1	TIMING PLATE - MANUAL
27	10-84657M		1	BOLT - MANUAL
28	811153M		1	TIMING PLATE - ELECTRIC
29	10-11832M		1	SCREW - ELECTRIC
30	12-82213M		1	WASHER - ELECTRIC
31	10-83285M		2	BOLT
32	11-82389M		2	NUT
33	125-82214M		7	WASHER
34	47341A1		1	EMERGENCY STARTER ROPE
35	10-82442M		1	BOLT
36	12-82217M		1	WASHER
37	17-14229M		1	DOWEL PIN
39	24-82079M		1	SPRING
40	811152M		1	CABLE

CONTINUED ON NEXT PAGE ➡

RECOIL STARTER

REF. NO.	PART NO.	SYM.	QTY.	DESCRIPTION
41	10-84315M		1	BOLT
42	81107M		1	LINK
43	13-81867M		1	WAVE WASHER
44	10-83539M		1	BOLT
45	12-82214M		1	WASHER
46	23-82929M		1	COLLAR
47	12-82211M		1	WASHER
48	13-81865M		1	WAVE WASHER
49	18-82125M		1	COTTER PIN
50	92599M		1	BRACKET (MANUAL)
	84939M		1	BRACKET (ELECTRIC)

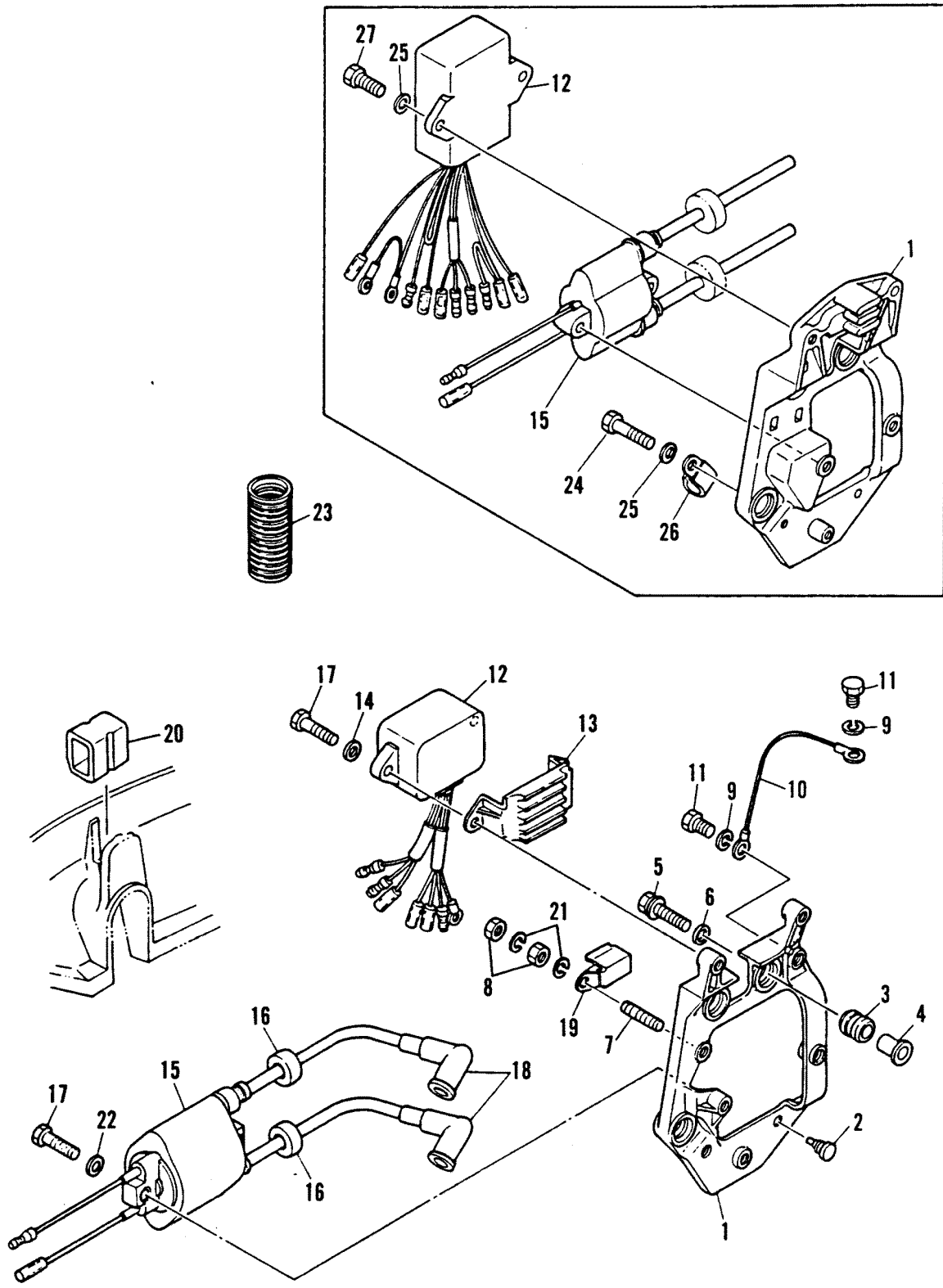
C.D.I MAGNETO



C.D.I MAGNETO

REF. NO.	PART NO.	SYM.	QTY.	DESCRIPTION
1	253-811178M		1	FLYWHEEL (ELECTRIC)
	253-8927M		1	FLYWHEEL (MANUAL)1
2	811176M		1	BASE ASSEMBLY
3	84879M		1	IGNITION COIL
4	10-82521M		2	SCREW
5	13-82186M		2	WASHER
6	84881M		1	LIGHTING COIL
7	10-82521M		2	SCREW
8	13-82186M		2	WASHER
9	84877M		1	PULSER
10	10-811177M		2	SCREW
11	10-82499M		1	SCREW
12	84-84883M		1	GROUND WIRE
13	12-82214M		2	WASHER
14	96649M		1	COVER
15	10-82436M		3	SCREW
16	11-96650M		1	NUT
17	12-96651M		1	WASHER
18	84885M		1	STOP
19	84886M		1	CAP
20	10-84315M		2	BOLT
21	84887M		1	CAM
22	10-84313M		2	BOLT
23	12-82211M		2	WASHER
24	28-81915M		1	KEY

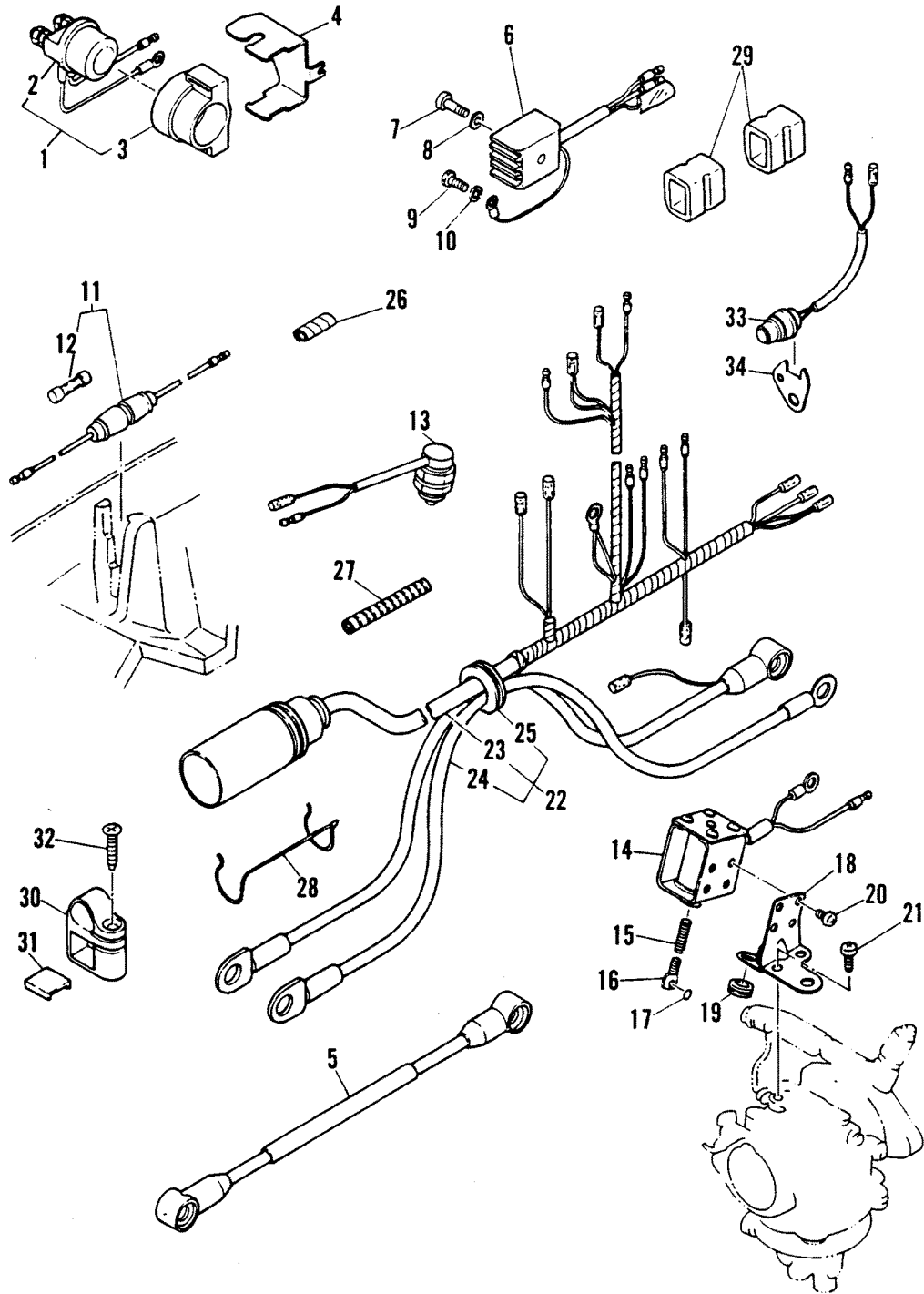
C.D.I. IGNITION COMPONENTS



C.D.I. IGNITION COMPONENTS

REF. NO.	PART NO.	SYM.	QTY.	DESCRIPTION
1	811179M		1	BRACKET (ELECTRIC)
	84868M		1	BRACKET (MANUAL)
2	84869M		1	DAMPER
3	25-93114M		3	DAMPER
4	23-82851M		3	COLLAR
5	10-811180M		5	BOLT
6	12-83769M		3	WASHER
7	16-84870M		1	STUD
8	11-82389M		2	NUT
9	13-82212M		2	WASHER
10	84-84871M		1	GROUND WIRE
11	10-813477M		2	BOLT
12	811181M		1	C.D.I. UNIT (ELECTRIC)
	84872M		1	C.D.I. UNIT (MANUAL)
13	84873M		1	HOLDER
14	12-82214M		2	WASHER
15	814990M		1	IGNITION COIL (ELECTRIC)
	84874M		1	IGNITION COIL (MANUAL)
16	25-82069M		2	GROMMET
17	10-82405M		4	BOLT
18	85-63709A1		2	SPARK PLUG CAP
	85-815119M		OPT	SPARK PLUG CAP (NOISE SUPPRESSOR)
19	54-96654M		1	CLAMP
20	25-84876M		1	GROMMET
21	13-82212M		2	LOCKWASHER
22	12-82214M		2	WASHER
23	85-815002M		1	INSULATOR
24	10-83285M		3	BOLT- ELECTRIC
25	12-82214M		5	WASHER - ELECTRIC
26	54-83577M		1	CLAMP - ELECTRIC
27	10-94526M		2	BOLT - ELECTRIC

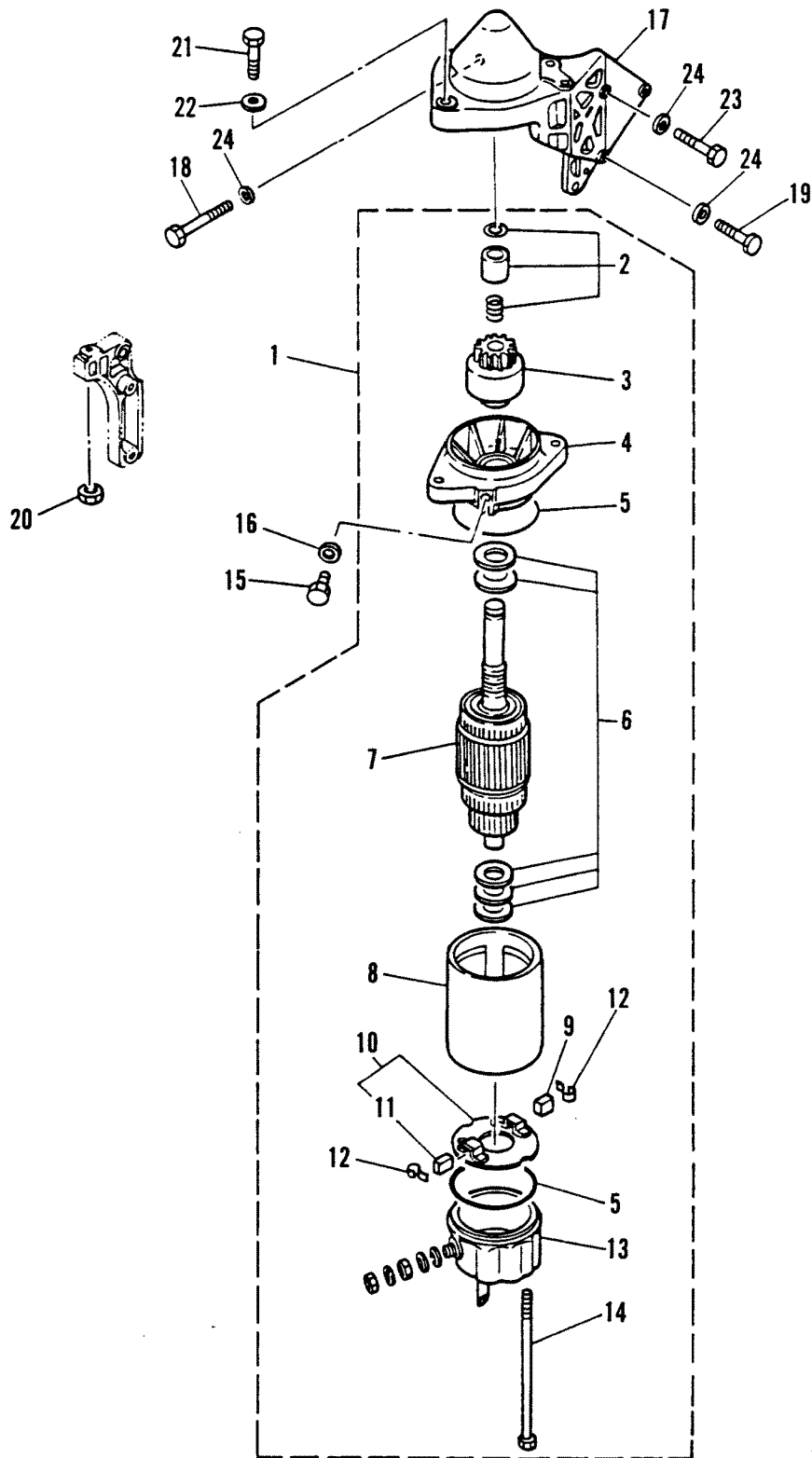
ELECTRIC START COMPONENTS



ELECTRIC START COMPONENTS

REF. NO.	PART NO.	SYM.	QTY.	DESCRIPTION
1	89-96356M		1	STARTER SOLENOID ASSEMBLY
2	89-95642M		1	SOLENOID
3	95643M		1	BRACKET
4	811182M		1	PLATE
5	84-97133M		1	WIRE
6	814995M		1	RECTIFIER
7	10-82521M		1	SCREW
8	12-82211M		1	WASHER
9	10-813477M		2	BOLT
10	13-82212M		2	WASHER
11	84937M		1	FUSE ASSEMBLY
12	88-81522M		1	FUSE
13	87-97684M		1	NEUTRAL SWITCH
14	14230M		1	CHOKE SOLENOID
15	84411M		1	HOOK
16	84701M		1	PULL
17	25-82258M		1	O-RING
18	14231M		1	RETAINER
19	25-82060M		1	GROMMET
20	10-82512M		4	SCREW
21	10-14232M		2	SCREW
22	84-811183M		1	ENGINE WIRING HARNESS
23	84-811184M		1	WIRE
24	84-97781M		1	WIRE
25	25-84950M		1	GROMMET
26	32-18936M		1	HOSE
27	98915M		2	INSULATOR
28	54-811185M		1	CLAMP
29	25-84876M		2	GROMMET
30	54-97772M		1	CLAMP
31	84708M		1	PLATE
32	10-84709M		1	SCREW
33	87-815003M		1	THERMO SWITCH
34	811186M		1	PLATE

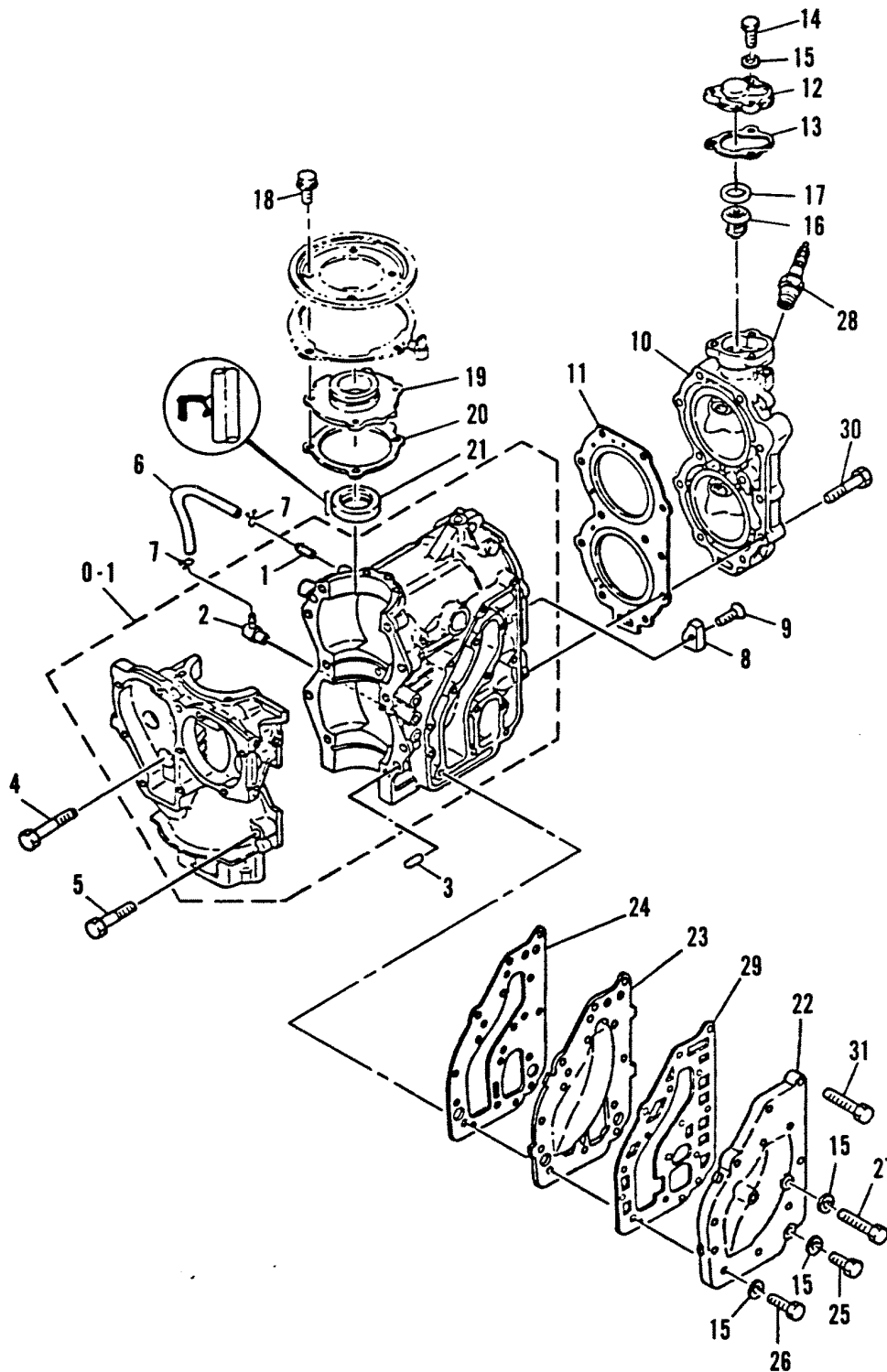
ELECTRIC START MOTOR



ELECTRIC START MOTOR

REF. NO.	PART NO.	SYM.	QTY.	DESCRIPTION
1	50-97693M		1	ELECTRIC MOTOR ASSEMBLY
2	96360M		1	PINION STOP SET
3	97694M		1	PINION
4	96362M		1	COVER (FRONT)
5	25-96363M		2	O-RING
6	12-96364M		1	WASHER KIT
7	96365M		1	ARMATURE
8	96366M		1	STATOR
9	96368M		1	BRUSH (POSITIVE)(+)
10	96367M		1	BRUSH (HOLDER)
11	96369M		1	BRUSH (NEGATIVE)(-)
12	24-84927M		2	SPRING
13	96370M		1	COVER (REAR)
14	10-84929M		2	BOLT
15	10-82436M		1	BOLT
16	12-82217M		1	WASHER
17	84930M		1	BRACKET
18	10-84931M		1	BOLT
19	10-83285M		2	BOLT
20	11-82389M		1	NUT
21	10-82441M		2	BOLT
22	12-82217M		3	WASHER
23	10-83285M		1	BOLT
24	12-82214M		3	WASHER

CRANKCASE AND CYLINDER HEAD



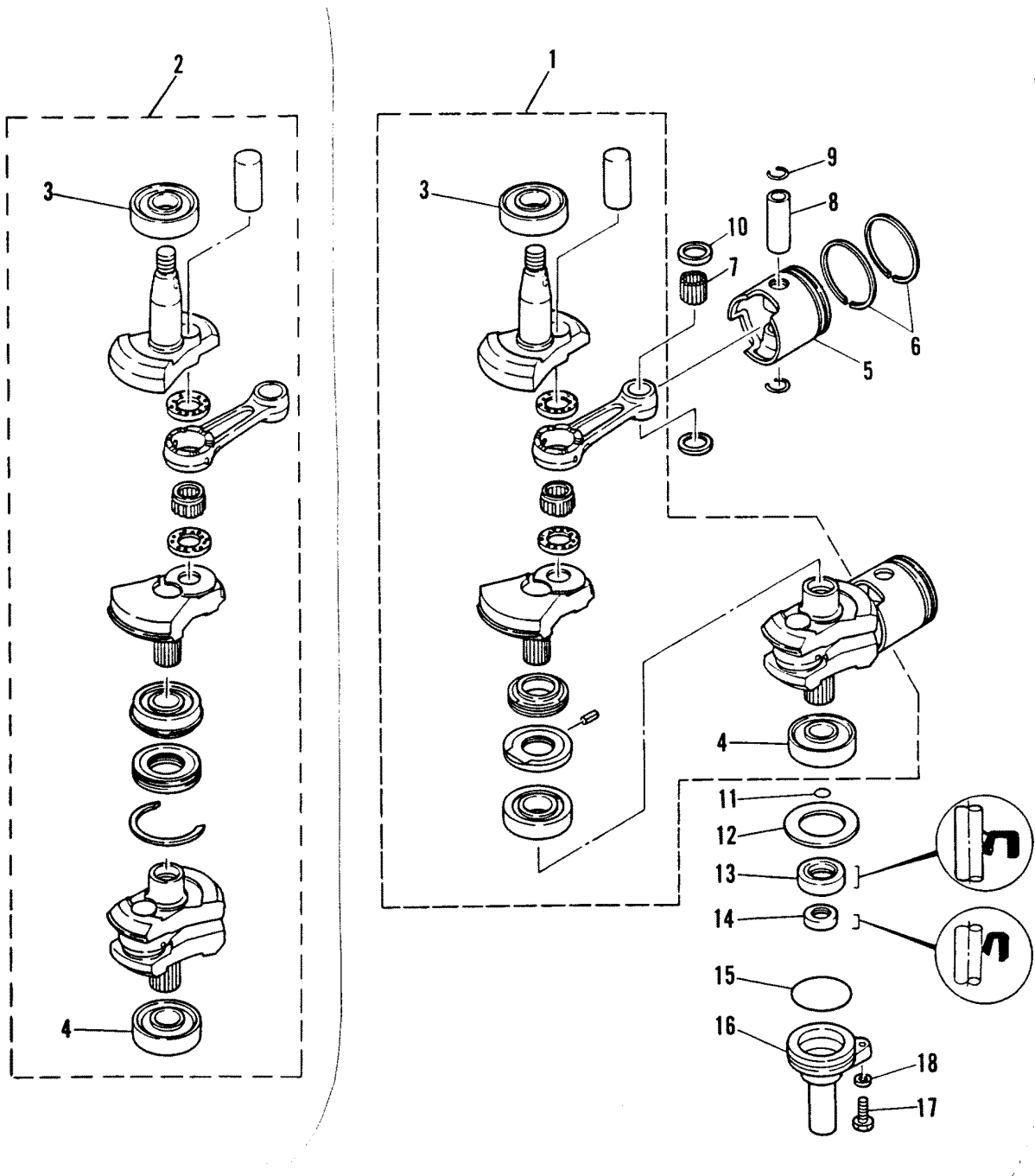
CRANKCASE AND CYLINDER HEAD

REF. NO.	PART NO.	SYM.	QTY.	DESCRIPTION
0-1	870-811024M		1	CYLINDER BLOCK (ELECTRIC)
	870-9371M		1	CYLINDER BOLCK (MANUAL)
1	22-80122M		1	FITTING
2	21-80727M		1	CHECK VALVE
3	17-82364M		2	DOWEL PIN
4	10-41839M		1	BOLT (ELECTRIC)
	10-41885M		2	BOLT (MANUAL)
5	10-41884M		8	BOLT (QTY. OF 9 ON ELECTRIC)
6	32-811045M		1	HOSE
7	54-82046M		2	CLAMP
8	84732M		1	ANODE
9	10-95209M		1	SCREW
10	968-7194M		1	CYLINDER HEAD
11	27-19138M	●	1	GASKET
12	81030M		1	COVER
13	27-81031M	●	1	GASKET
14	10-811025M		3	GOLT (ELECTRIC)
	10-83539M		3	BOLT (MANUAL)
15	12-82214M		18	WASHER (QTY. OF 26 ON ELECTRIC)
16	95679M		1	THERMOSTAT
17	12-81835M		1	WASHER
18	10-811022M		4	BOLT
19	84736M		1	HOUSING
20	27-84737M	●	1	GASKET
21	26-811021M	●	1	OIL SEAL
22	95680M		1	EXHAUST COVER (OUTER)
23	95681M		1	EXHAUST COVER (INNER)
24	27-84741M	●	1	GASKET
25	10-82405M		1	BOLT
26	10-83285M		12	BOLT (QTY. OF 10 ON ELECTRIC)
27	10-84931M		2	BOLT
28	33-53098		2	SPARKPLUG
29	27-96656M	●	1	GASKET
30	10-41885M		11	BOLT
31	10-83285M		2	BOLT (ELECTRIC)

FOR REPLACEMENT OF POWERHEAD ASSEMBLY, COMPLETE, WHICH INCLUDES CYLINDER BLOCK, CYLINDER HEAD, PISTONS, CRANKSHAFT ASSEMBLY, BEARING, ETC. ORDER POWERHEAD [811023M]-ELECTRIC OR [95678M]-MANUAL

● = COMPONENT OF POWERHEAD GASKET SET [27-96658] (MANUAL) ; [27-811996M] (ELECTRIC)

CRANKSHAFT AND PISTON

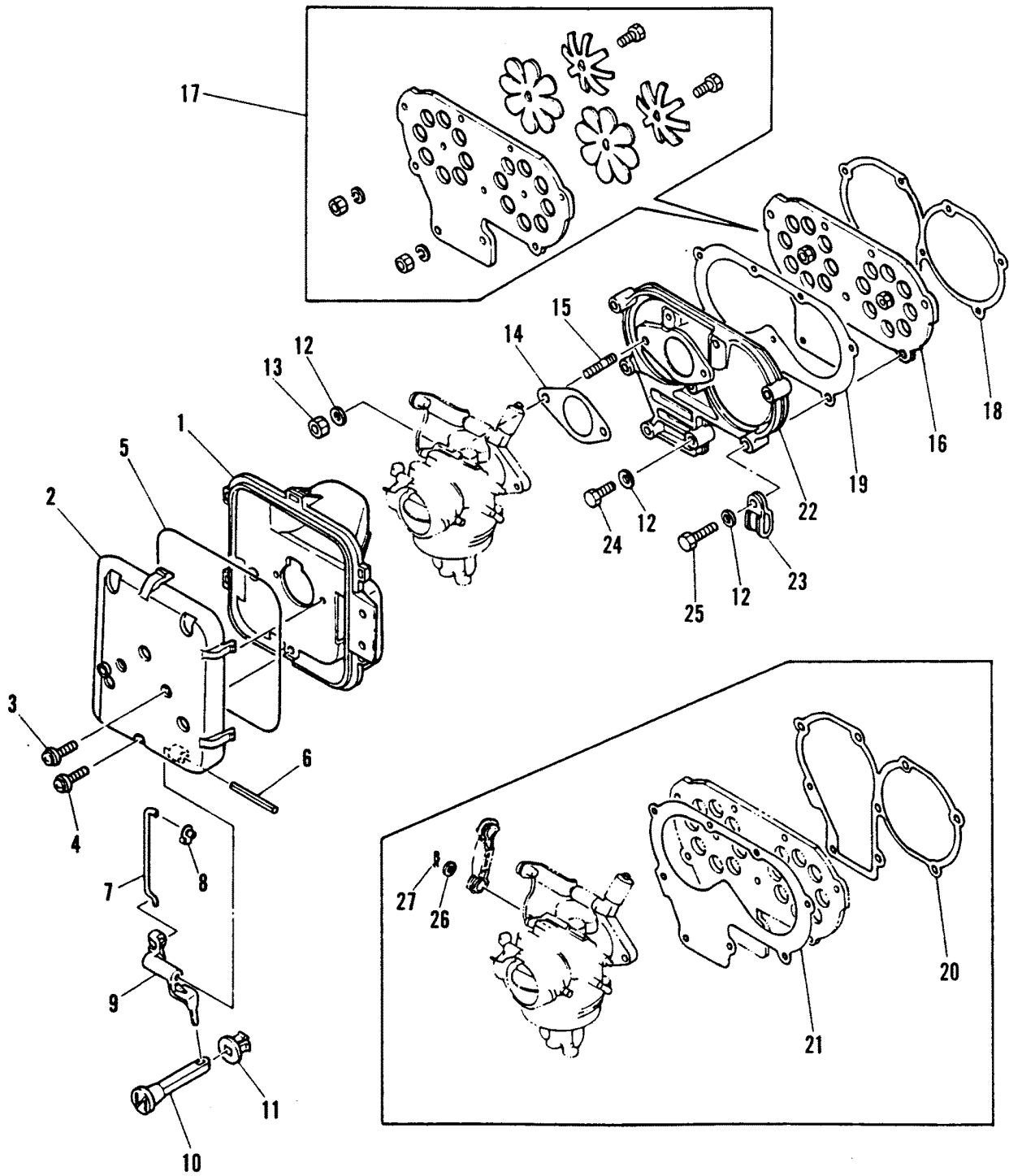


CRANKSHAFT AND PISTON

REF. NO.	PART NO.	SYM.	QTY.	DESCRIPTION
1	463-811026M		1	CRANKSHAFT ASSEMBLY (ELECTRIC)
2	463-9068M		1	CRANKSHAFT ASSEMBLY (MANUAL)
3	30-96659M		1	BEARING (UPPER)
4	30-18971M		1	BEARING (LOWER)
5	761-8484M		2	PISTON (STANDARD)
	761-8485M		AR	PISTON (1ST. O.S. 72.25MM)
	761-8486M		AR	PISTON (2ND. O.S. 72.50MM)
6	39-14235M		2	PISTON RING SET (STANDARD)
	39-84747M		AR	PISTON RING SET (1ST. O.S. 72.25MM)
	39-14236M		AR	PISTON RING SET (2ND. O.S. 72.50MM)
7	29-84452M		68	NEEDLE BEARING
8	41-84749M		2	PISTON PIN
10	53-81264M		4	WASHER
11	25-82268M	●	1	O-RING
12	23-81842M		1	WASHER
13	26-19133M	●	1	OIL SEAL
14	26-18972M	●	1	OIL SEAL
15	25-84089M	●	1	O-RING
16	18973M		1	HOUSING
17	10-94526M		1	BOLT
18	12-82214M		1	WASHER

● = COMPONENT OF POWERHEAD GASKET SET [27-96658] (MANUAL) ; [27-811996M] (ELECTRIC)

INTAKE MANIFOLD

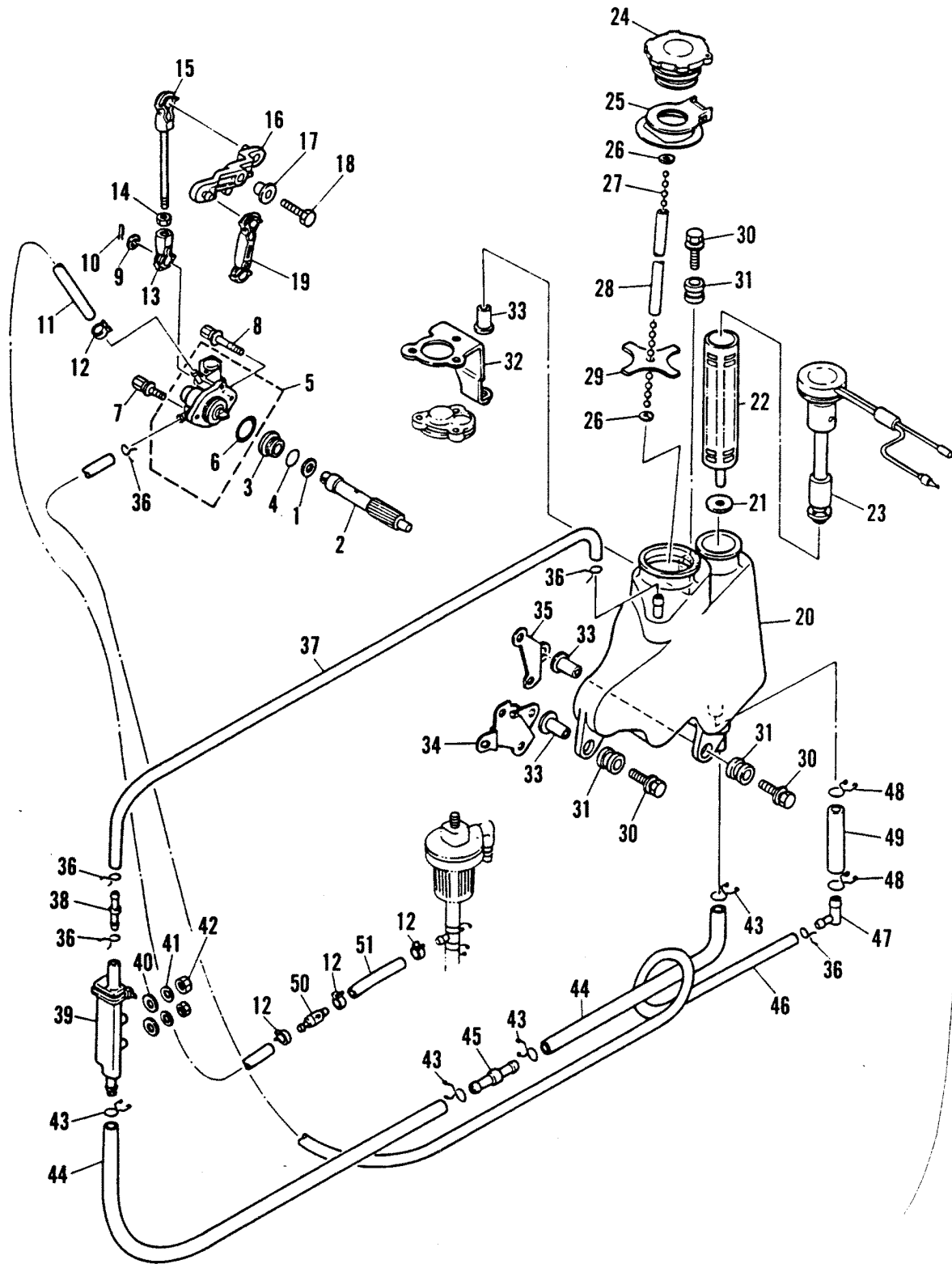


INTAKE MANIFOLD

REF. NO.	PART NO.	SYM.	QTY.	DESCRIPTION
1	811031M		1	AIR INTAKE COVER (INNER)
2	95682M		1	AIR INTAKE COVER (OUTER)
3	10-811032M		2	SCREW
4	10-811033M		1	SCREW
5	25-84757M	●	1	O-RING
6	17-84762M		1	ROLL PIN
7	84763M		1	ROD
8	81191M		1	RETAINER
9	84761M		1	CHOKE LEVER
10	83960M		1	CHOKE KNOB
11	25-84760M		1	GROMMET
12	12-82214M		11	WASHER
13	11-82389M		2	NUT
14	27-80572M	●	1	GASKET
15	16-811028M		2	STUD
16	811027M		1	REED VALVE ASSEMBLY
17	34-84759M		1	REED SET (REED STOPS NOT INCLUDED)
18	27-80569M	●	1	GASKET- MANUAL
19	27-80571M	●	1	GASKET - MANUAL
20	27-811029M	●	1	GASKET- ELECTRIC
21	27-811030M	●	1	GASKET - ELECTRIC
22	80570M		1	INTAKE MANIFOLD
23	54-96348M		1	CLAMP
24	10-82405M		2	BOLT
25	10-83285M		7	BOLT
26	12-83768M		1	WASHER - ELECTRIC
27	54-814589M		1	CLAMP - ELECTRIC
-	811038M		0	CARBURETOR REPAIR KIT

● = COMPONENT OF POWERHEAD GASKET SET [27-96658] (MANUAL) ; [27-811996M] (ELECTRIC)

OIL PUMP



OIL PUMP

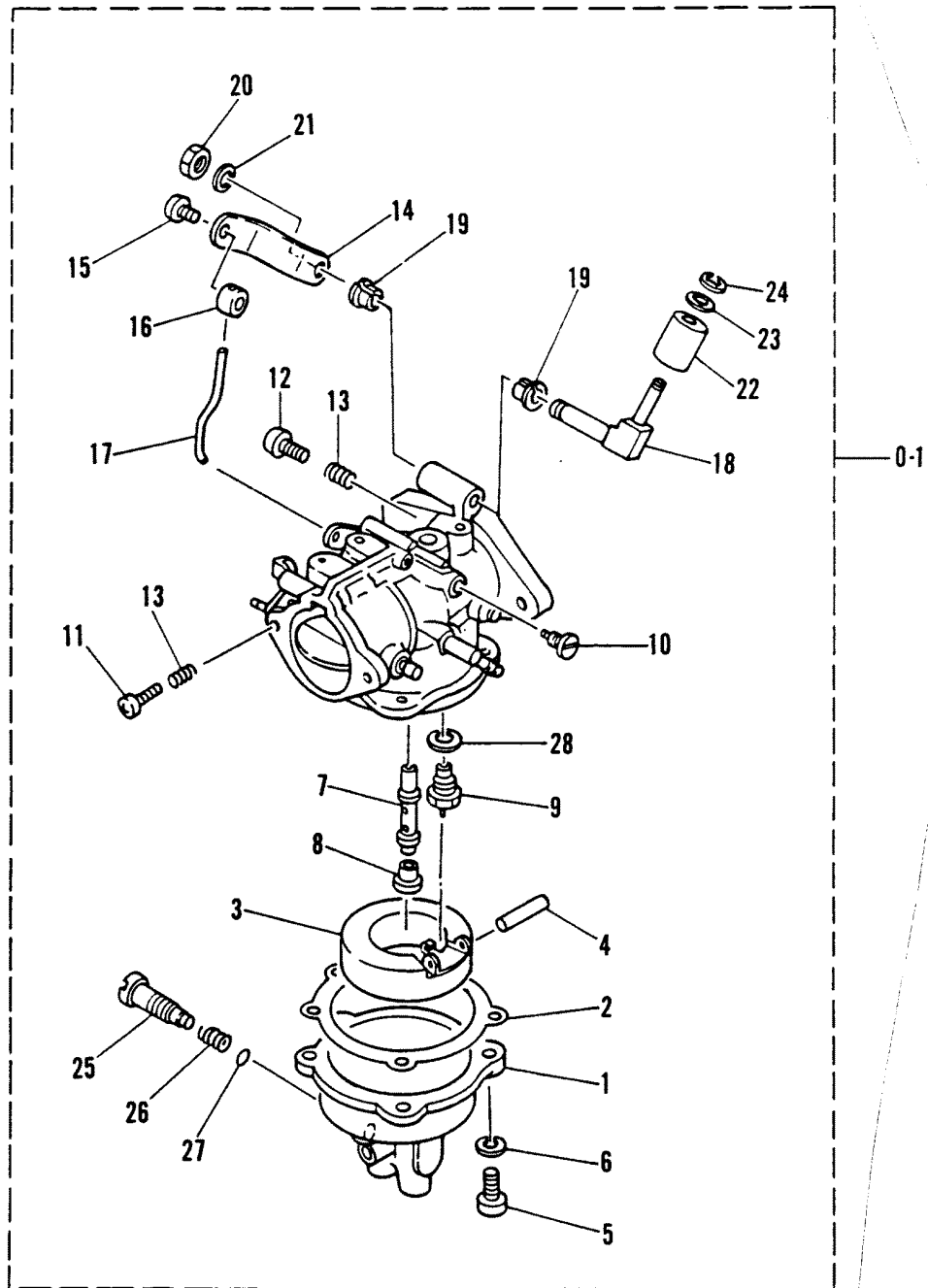
REF. NO.	PART NO.	SYM.	QTY.	DESCRIPTION
1	12-811039M		1	WASHER
2	43-811040M		1	DRIVEN GEAR
3	23-811041M		1	COLLAR
4	25-811042M		1	O-RING
5	811043M		1	OIL INJECTION PUMP
6	25-811044M		1	O-RING
7	10-814583M		1	BOLT
8	10-814584M		1	BOLT
9	12-83768M		1	WASHER
10	54-814589M		1	CLIP
11	32-811045M		1	HOSE
12	54-814585M		4	CLIP
13	16715M		1	CONNECTOR
14	11-82379M		1	NUT
15	811048M		1	LINK
16	811049M		1	CONTROL LEVER
17	23-811078M		1	COLLAR
18	10-82405M		1	BOLT
19	811122M		1	LINK
20	1252-811134M		1	OIL TANK
21	27-811137M		1	GASKET
22	814595M		1	OIL STRAINER
23	811151M		1	OIL LEVER GAUGE NOTE #1 M-689-232775 & BELOW ML-689-532960 & BELOW E-689-250855 & BELOW EL-689-551575 & BELOW
	811911M		1	OIL LEVER GAUGE NOTE #2 M-689-232776 & UP ML-689-532961 & UP E-689-250856 & UP EL-689-551576 & UP
24	36-814591M		1	CAP
25	811015M		1	HOOK
26	12-814592M		2	WASHER
27	814593M		1	CHAIN
28	32-811136M		1	HOSE
29	814594M		1	PLATE
30	10-811138M		3	BOLT
31	25-93114M		3	DAMPER
32	811141M		1	BRACKET
33	23-82851M		3	BUSHING
34	811140M		1	BRACKET
35	811139M		1	BRACKET
36	54-82047M		5	CLIP
37	32-82012M		1	HOSE
38	22-811148M		1	CONNECTOR
39	811144M		1	OIL TANK SUB ASSEMBLY
40	23-811145M		2	SPACER

CONTINUED ON NEXT PAGE ➡

OIL PUMP

REF. NO.	PART NO.	SYM.	QTY.	DESCRIPTION
41	12-811146M		2	WASHER
42	11-811147M		2	NUT
43	54-811150M		4	CLIP
44	32-814966M		2	HOSE
45	22-811149M		1	CONNECTOR
46	32-811143M		1	TUBING
47	22-814599M		1	CONNECTOR
48	54-814598M		2	CLIP
49	32-811142M		1	HOSE
50	21-811046M		1	CHECK VALVE
51	32-811047M		1	HOSE

CARBURETOR



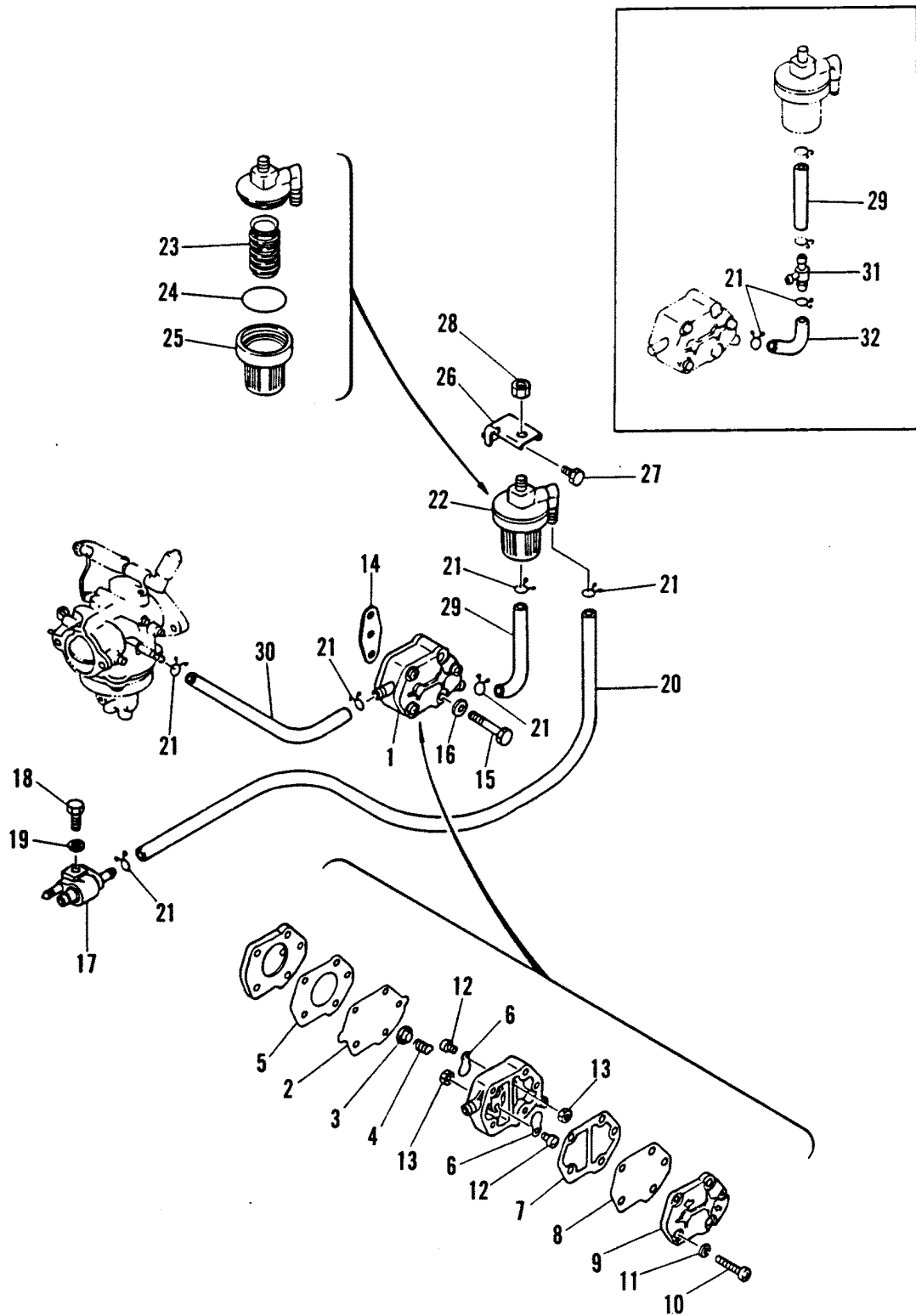
CARBURETOR

REF. NO.	PART NO.	SYM.	QTY.	DESCRIPTION
0-1	1383-811035M		1	CARBURETOR (ELECTRIC)
	1383-811034M		1	CARBURETOR (MANUEL)
1	14237M		1	FLOAT BOWL
2	27-80590M	●	1	GASKET
3	80591M	■	1	FLOAT
4	17-11794M		1	PIN
5	10-82515M		4	SCREW
6	13-82206M		4	LOCKWASHER
7	84766M		1	MAIN NOZZLE
8	84767M		1	MAIN JET (#135)
9	80593M	■	1	INLET NEEDLE VALVE ASSEMBLY
10	811036M		1	PILOT JET (#58)
11	10-814463M		1	IDLE SPEED SCREW
12	10-80573M		1	IDLE MIXTURE SCREW
13	24-814460M		2	SPRING
14	84768M		1	LEVER
15	10-80091M		1	SCREW
16	84770M		1	RETAINER
17	84771M		1	THROTTLE ROD
18	811037M		1	THROTTLE ARM
19	23-81941M		2	BUSHING
20	11-82379M		1	NUT
21	13-82186M		1	LOCKWASHER
22	23-84454M		1	COLLAR
23	12-82209M		1	WASHER
24	53-82328M		1	SNAP RING
25	10-80349M		1	DRAIN VALVE
26	24-80331M		1	SPRING
27	25-80350M		1	O-RING
28	12-80261M		1	WASHER

● = COMPONENT OF POWERHEAD GASKET SET [27-96658] (MANUAL) ; [27-811996M] (ELECTRIC)

■ = COMPONENT OF CARBURETOR REPAIR KIT [811038M]

FUEL PUMP, FUEL LINES AND FILTER



FUEL PUMP, FUEL LINES AND FILTER

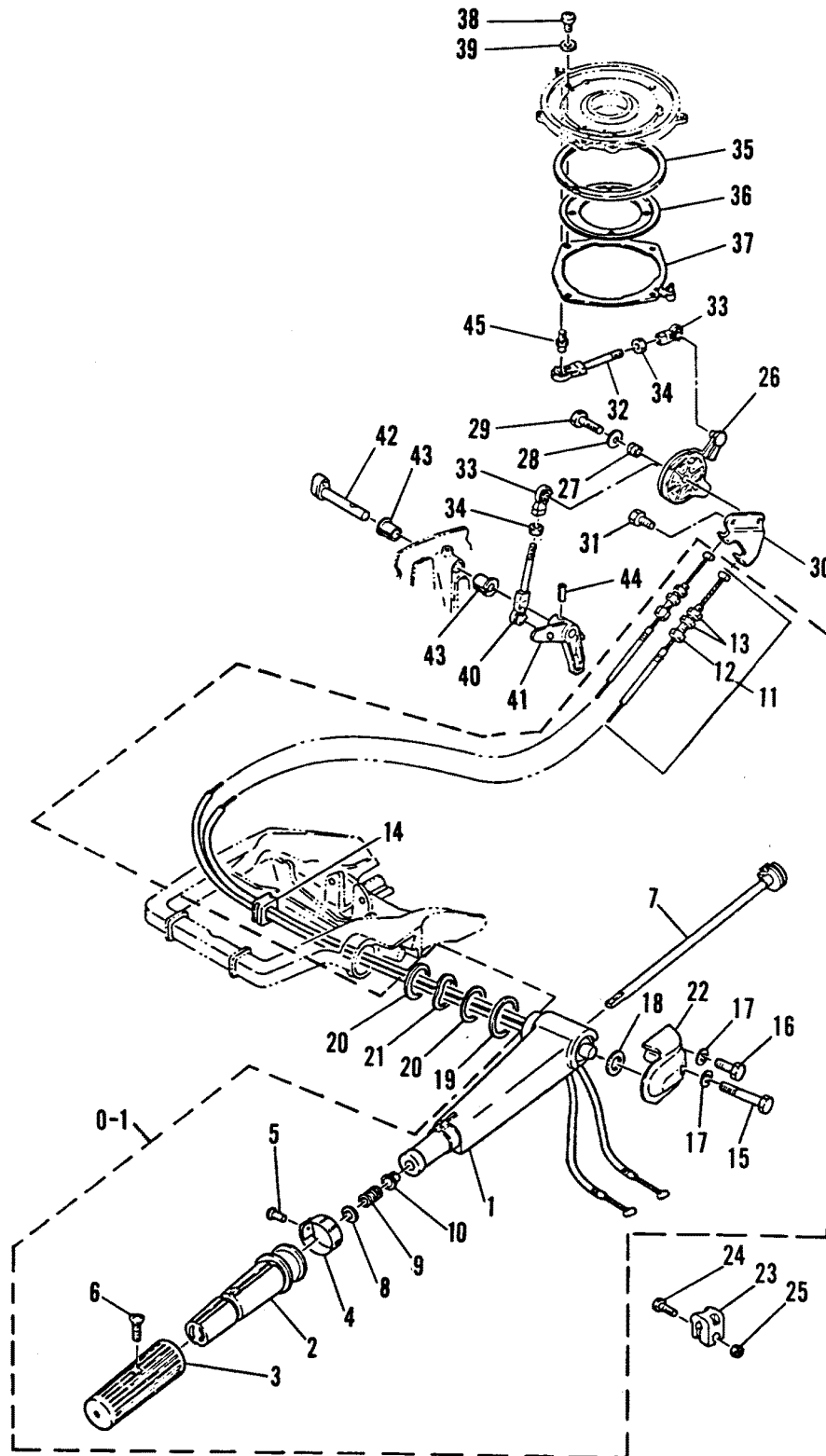
REF. NO.	PART NO.	SYM.	QTY.	DESCRIPTION
1	43113M		1	FUEL PUMP ASSEMBLY
2	80606M		1	DIAPHRAGM
3	80611M		1	PLATE
4	24-80610M		1	SPRING
5	27-80613M		1	GASKET
6	21-41888M		2	CHECK VALVE
7	27-80614M		1	GASKET
8	84141M		1	DIAPHRAGM
9	80607M		1	COVER
10	10-82522M		3	SCREW
11	13-82186M		3	LOCKWASHER
12	10-41889M		2	SCREW
13	11-82537M		2	NUT
14	27-80757M	●	1	GASKET
15	10-82428M		2	BOLT
16	12-82214M		2	WASHER
17	14187M		1	FUEL CONNECTOR
18	10-83539M		1	BOLT
19	12-82214M		1	WASHER
20	32-82012M		1	HOSE
21	54-82047M		6	CLAMP (QTY. OF 8 ON ELECTRIC)
22	35-11931M		1	FUEL FILTER ASSEMBLY (SEE NOTE#1)
23	35-11934M		1	FILTER (SEE NOTE#1)
24	25-84957M	●	1	O-RING (SEE NOTE#1)
25	11935M		1	CUP (SEE NOTE#1)
26	80620M		1	BRACKET
27	10-813477M		1	BOLT
28	11-82382M		1	NUT
29	32-82012M		1	HOSE (ELECTRIC)
	32-81324M		1	HOSE (MANUAL)
30	32-81324M		1	HOSE
31	22-811156M		1	CONNECTOR - ELECTRIC
32	32-81324M		1	HOSE - ELECTRIC
22	35-826964M		1	FILTER ASSEMBLY (SEE NOTE #2)
23	35-826965M		1	FILTER (SEE NOTE #2)
24	25-826966M		1	O-RING (SEE NOTE #2)
25	11935M		1	CUP (SEE NOTE #2)

NOTE: #1 MS-235090 ML-535640 ES-251315 EL-553065 AND BELOW

NOTE: #2 MS-235091 ML-535641 ES-251316 EL-553066 AND ABOVE

● = COMPONENT OF POWERHEAD GASKET SET [27-96658] (MANUAL) ; [27-811996M] (ELECTRIC)

STEERING HANDLE AND THROTTLE CONTROL

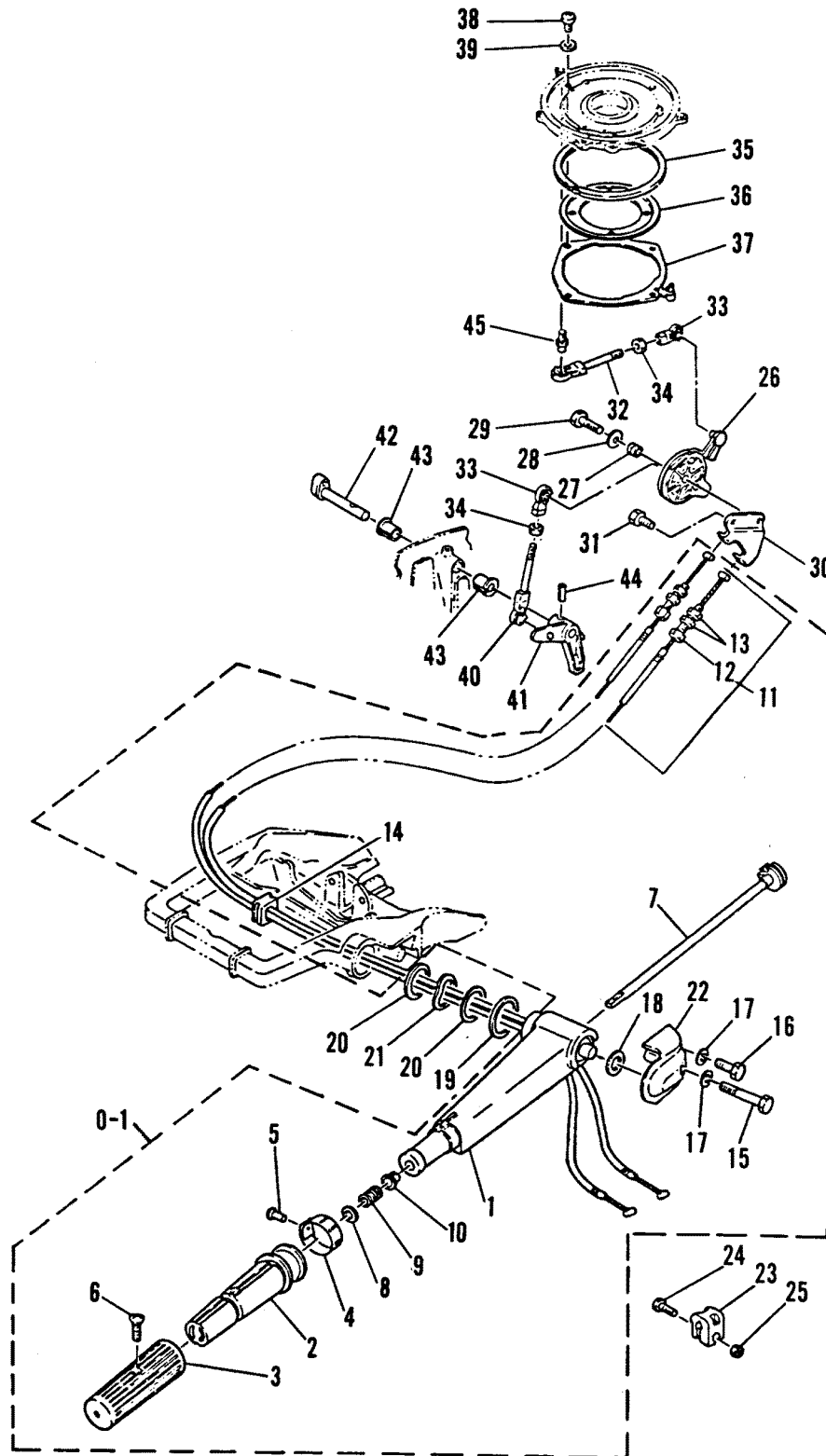


STEERING HANDLE AND THROTTLE CONTROL

REF. NO.	PART NO.	SYM.	QTY.	DESCRIPTION
0-1	95420M		1	STEERING HANDLE ASSEMBLY ORDERING STEERING HANDLE ASSEMBLY AS A NEW ACCESSORY (NEW ADD ON ASSEMBLY), REF. #'S 23 THRU 25 ARE ALSO REQUIRED
1	96664M		1	STEERING HANDLE
2	81585M		1	GRIP
3	95497M		1	RUBBER HANDLE
4	97137M		1	THROTTLE INDICATOR
5	17-81907M		1	RIVET
6	10-811916M		1	SCREW
7	84856M		1	THROTTLE SHAFT
8	12-82220M		1	WASHER
9	24-82095M		1	SPRING
10	23-81945M		1	BUSHING
11	41892M		2	THROTTLE CABLE ASSEMBLY
12	10-815139M		1	ADJUSTMENT COLLAR
13	11-81765M		2	NUT
14	25-82064M		1	GROMMET
15	10-84931M		1	BOLT
16	10-83539M		1	BOLT
17	12-82214M		2	WASHER
18	23-82119M		1	SPACER
19	23-81861M		1	WASHER
20	12-84850M		2	WASHER
21	13-84851M		1	WAVE WASHER
22	84852M		1	RETAINER
23	82895M		1	FRICITION PIECE
24	10-83539M		1	BOLT
25	11-83056M		1	NUT
26	811166M		1	MAGNETO CONTROL LEVER (ELECTRIC)
	84858M		1	MAGNETO CONTROL LEVER (MANUAL)
27	23-83310M		1	COLLAR
28	12-81969M		1	COLLAR
29	10-82405M		1	BOLT
30	811167M		1	RETAINER (ELECTRIC)
	84859M		1	RETAINER (MANUAL)
31	10-813477M		1	BOLT
32	811168M		1	ROD
33	16715M		2	JOINT
34	11-82388M		2	NUT
35	83566M		1	RETAINER
36	19139M		1	RETIANER
37	83569M		1	BASE PLATE
38	10-14232M		4	SCREW
39	12-82211M		4	WASHER

CONTINUED ON NEXT PAGE ➡

STEERING HANDLE AND THROTTLE CONTROL

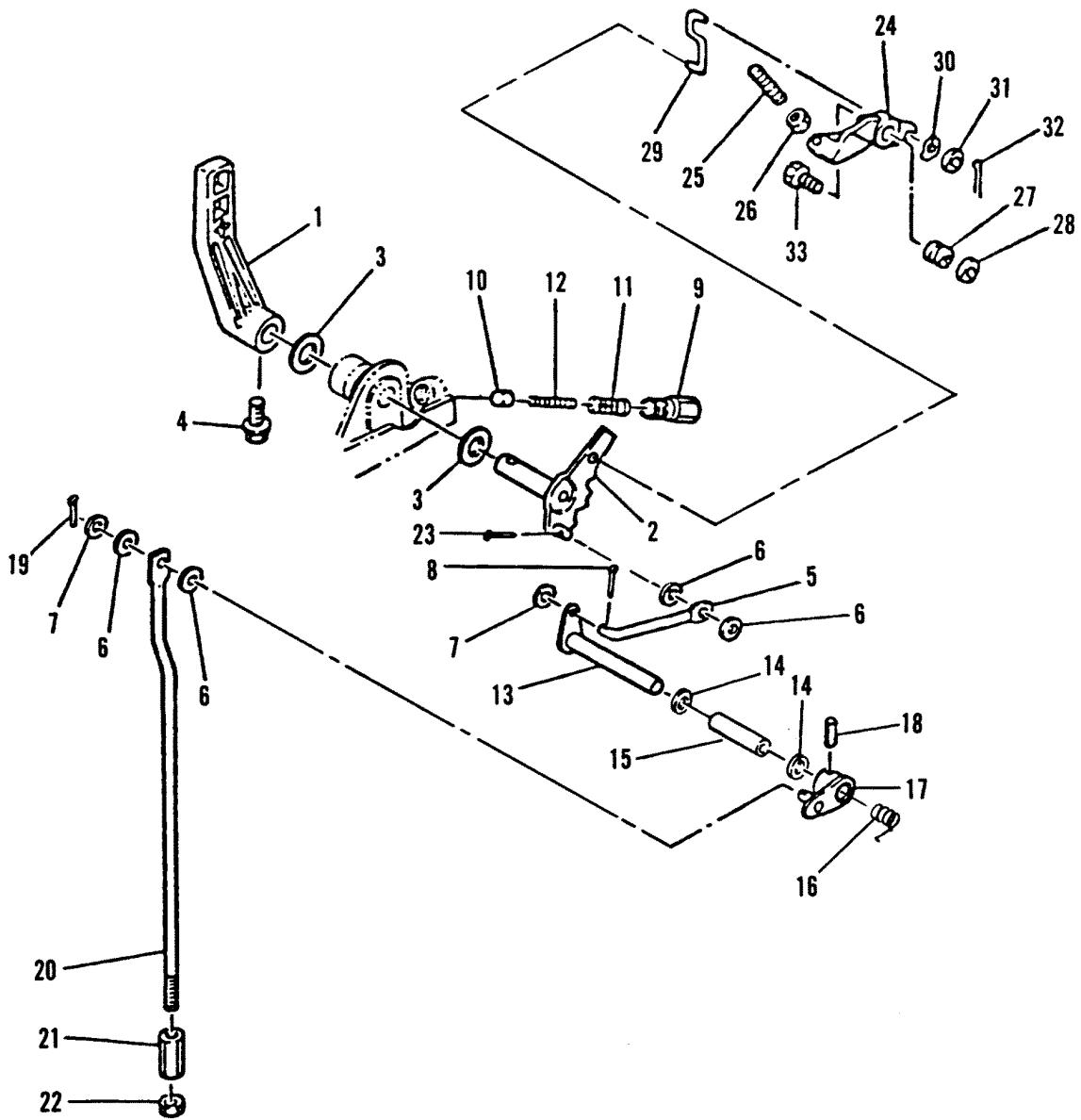


STEERING HANDLE AND THROTTLE CONTROL

REF. NO.	PART NO.	SYM.	QTY.	DESCRIPTION
40	14238M		1	JOINT
41	84863M		1	THROTTLE CONTROL LEVER (ELECTRIC)
	97138M		1	THROTTLE CONTROL LEVER (MANUAL)
42	81134M		1	THROTTLE CONTROL SHAFT
43	23-81946M		2	BUSHING
44	17-82156M		1	ROLL PIN
45	84305M		1	JOINT

ORDERING STEERING HANDLE ASSEMBLY AS A NEW ACCESSORY (NEW ADD ON ASSEMBLY), REF. #'S 23 THRU 25 ARE ALSO REQUIRED.

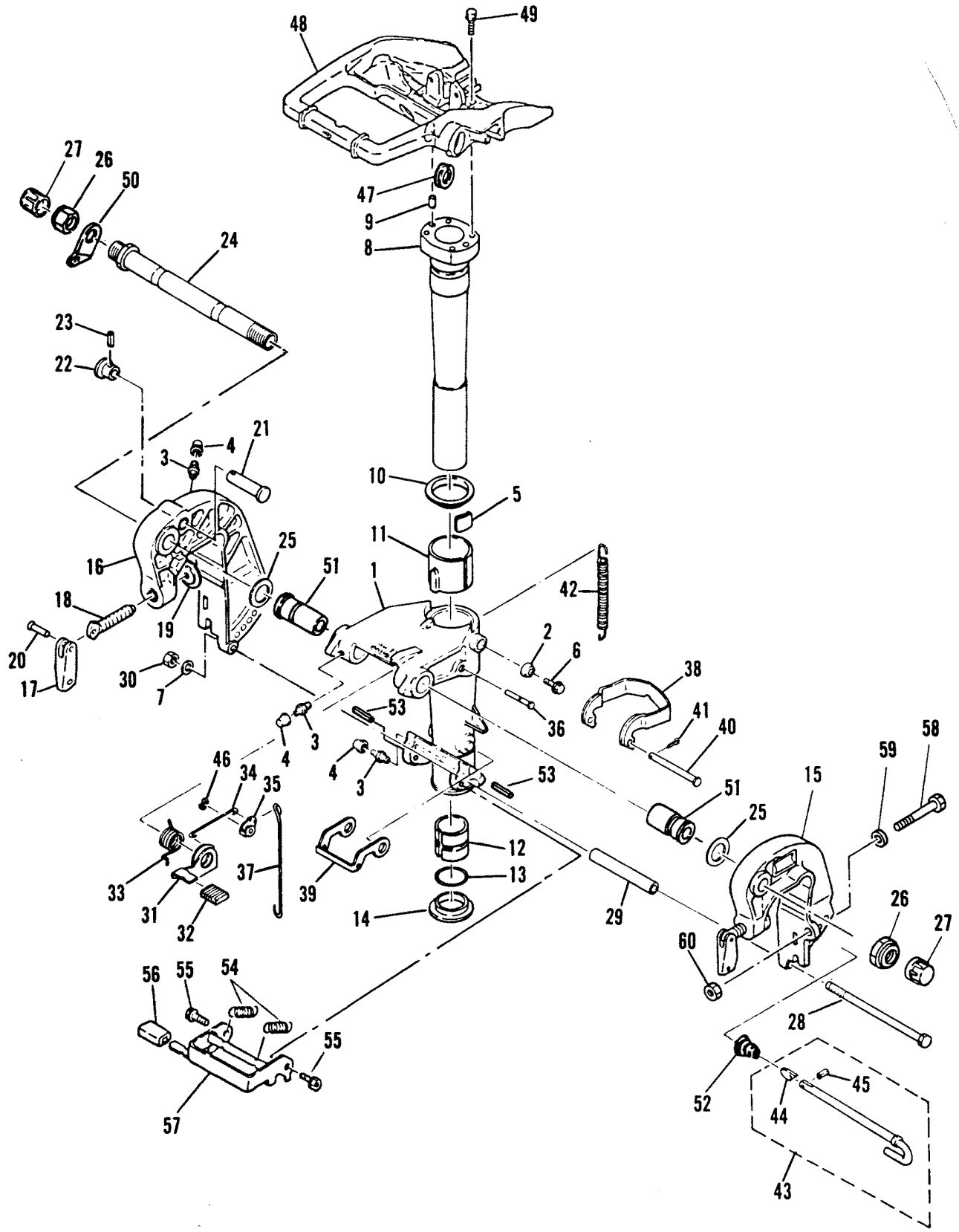
GEAR SHIFT LINKAGE



GEAR SHIFT LINKAGE

REF. NO.	PART NO.	SYM.	QTY.	DESCRIPTION
1	811169M		1	GEAR SHIFT HANDLE
2	84653M		1	CAM
3	12-81851M		2	WASHER (USE WHERE APPLICABLE)
4	10-84830M		1	BOLT
5	81595M		1	LINK ROD
6	12-81843M		4	WASHER
7	12-82211M		2	WASHER
8	18-82125M		1	COTTER PIN
9	84459M		1	BUSHING
10	84460M		1	PLUNGER
11	24-84461M		1	SPRING
12	24-84462M		1	SPRING
13	97139M		1	SHIFT ROD LEVER
14	12-81846M		2	WASHER
15	23-97142M		1	COLLAR
16	24-97140M		1	SPRING
17	84867M		1	SHIFT ROD LEVER
18	17-82155M		1	ROLL PIN
19	18-82127M		1	COTTER PIN
20	80651M		1	SHIFT ROD
21	80652M		1	CONNECTOR
22	11-81767M		1	NUT
23	18-82124M		1	COTTER PIN
24	97131M		1	ARM
25	16-41883M		1	STUD
26	11-82388M		1	NUT
27	23-83310M		1	COLLAR
28	12-81969M		1	COLLAR
29	91650M		1	LINK
30	13-81865M		1	WAVE WASHER
31	12-82211M		2	WASHER
32	18-82125M		1	COTTER PIN
33	10-83539M		1	BOLT

CLAMP AND SWIVEL BRACKET/REVERSE LOCK

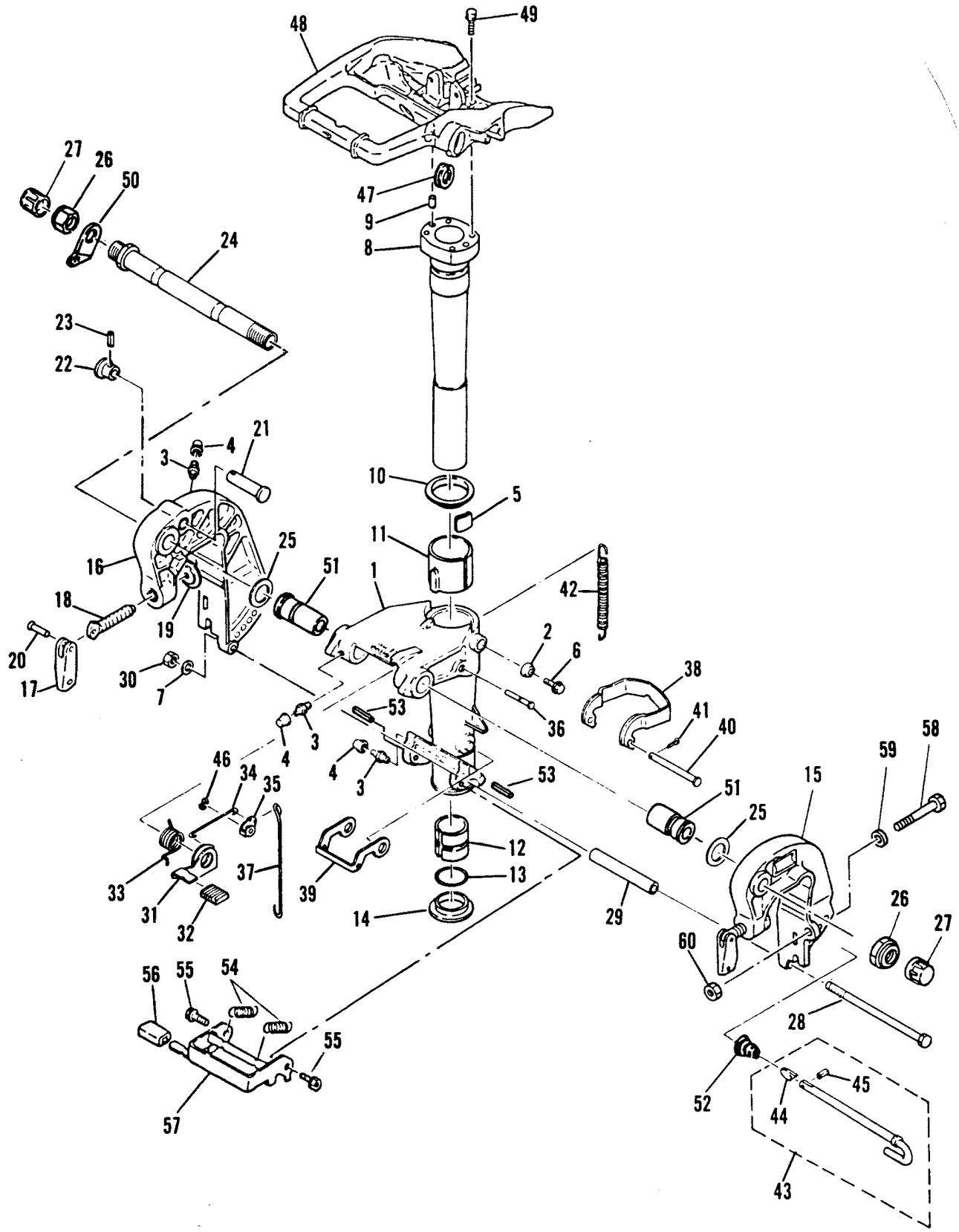


CLAMP AND SWIVEL BRACKET/REVERSE LOCK

REF. NO.	PART NO.	SYM.	QTY.	DESCRIPTION
1	1485-9792M		1	SWIVEL BRACKET
2	26-91637M		1	SEAL
3	22-82369M		4	GREASE FITTING
4	81439M		4	CAP
5	80633M		1	FRICTION PLATE
6	10-96382M		1	SCREW
7	12-82217M		1	WASHER
9	84833M		2	SHAFT
	17-82368M		2	DOWEL PIN
10	12-81873M		1	WASHER
11	23-81964M		1	BUSHING (UPPER)
12	23-81961M		1	BUSHING (LOWER)
13	25-82274M		1	O-RING
14	23-81959M		1	BUSHING
15	1484-9797M		1	CLAMP BRACKET (PORT)
16	1484-9798M		1	CLAMP BRACKET (STARBOARD)
17	80048M		2	HANDLE
18	10-81756M		2	SCREW
19	12-80638M		2	PAD
20	17-81888M		2	ROLL PIN
21	84835M		1	SHAFT
22	95650M		1	KNOB
23	17-82148M		1	ROLL PIN
24	10-18974M		1	BOLT
25	12-81836M		2	WASHER
26	11-81787M		2	NUT
27	81388M		2	CAP NOTE #1: M-689-232775 & BELOW ML-689-532960 & BELOW E-689-250855 & BELOW EL-689-551575 & BELOW
	811914M		2	CAP NOTE #2: M-689-232776 & UP ML-689-532961 & UP E-689-250856 & UP EL-689-551576
28	10-82924M		1	BOLT
29	23-19108M		1	SPACER
30	11-82382M		1	NUT
31	91640M		1	LOCK/RELEASE LEVER
32	91641M		1	COVER
33	24-91642M		1	SPRING
34	91643M		1	LINK
35	80648M		1	TILT CAM
36	17-19109M		1	PIN
37	80645M		1	ROD
38	84837M		1	HOOK (REAR)
39	80643M		1	HOOK (FRONT)
40	17-81882M		1	PIN
41	18-82125M		1	COTTER PIN

CONTINUED ON NEXT PAGE ➡

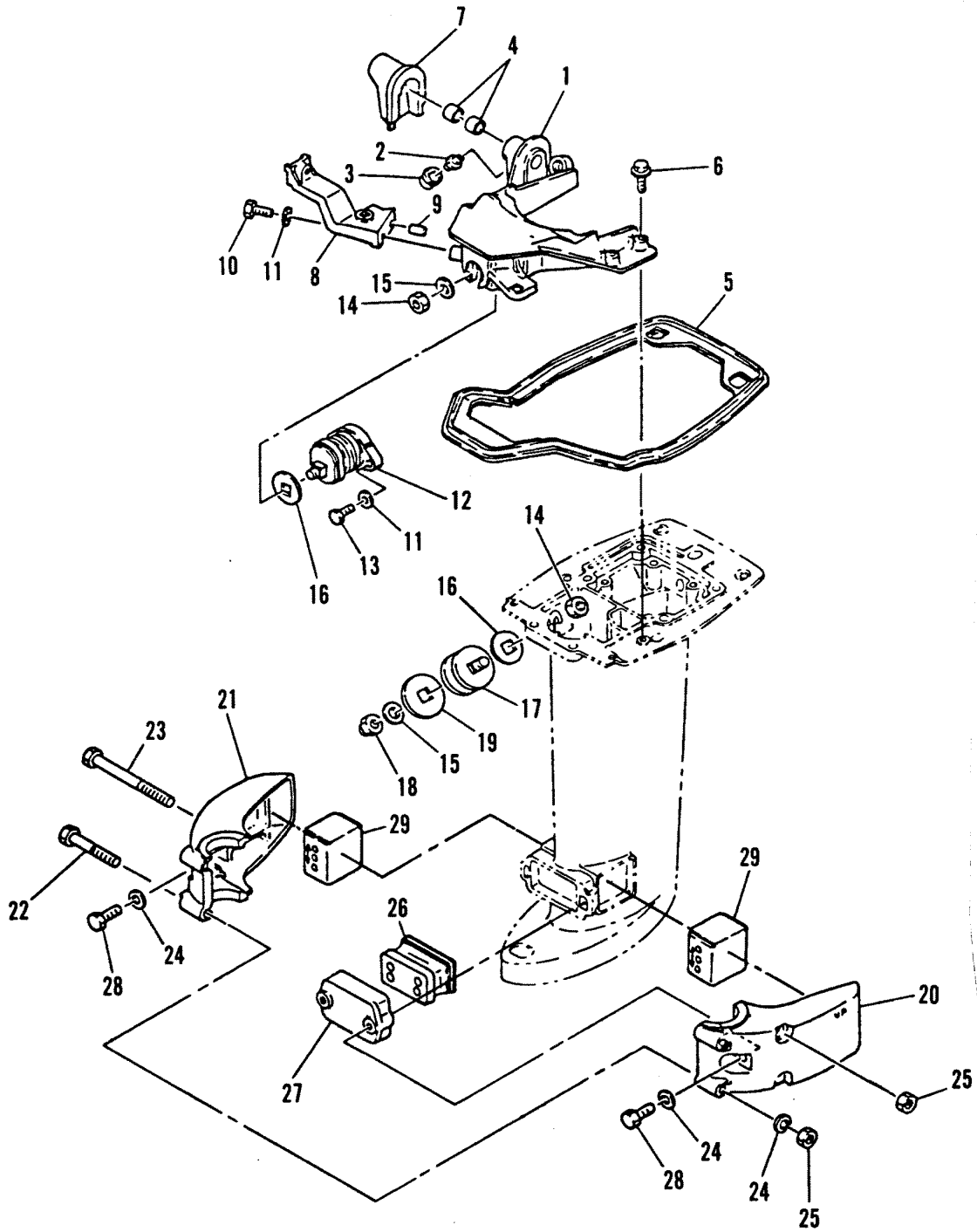
CLAMP AND SWIVEL BRACKET/REVERSE LOCK



CLAMP AND SWIVEL BRACKET/REVERSE LOCK

REF. NO.	PART NO.	SYM.	QTY.	DESCRIPTION
42	24-19110M		1	SPRING
43	17-94569M		1	TILT LOCK PIN ASSEMBLY
44	82857M		1	STOPPER
45	17-82144M		1	ROLL PIN
46	53-82330M		1	SNAP RING
47	25-82070M		1	GROMMET
48	19113M		1	BRACKET
49	10-84830M		4	BOLT
50	19111M		1	PLATE
51	23-19112M		2	BUSHING
52	24-815007M		1	SPRING
53	17-95552M		2	PIN
54	24-95553M		2	SPRING
55	10-95554M		2	BOLT
56	11932M		1	COVER
57	95551M		1	LEVER
58	10-82471M		2	BOLT
59	12-82217M		4	WASHER
60	11-82382M		4	NUT

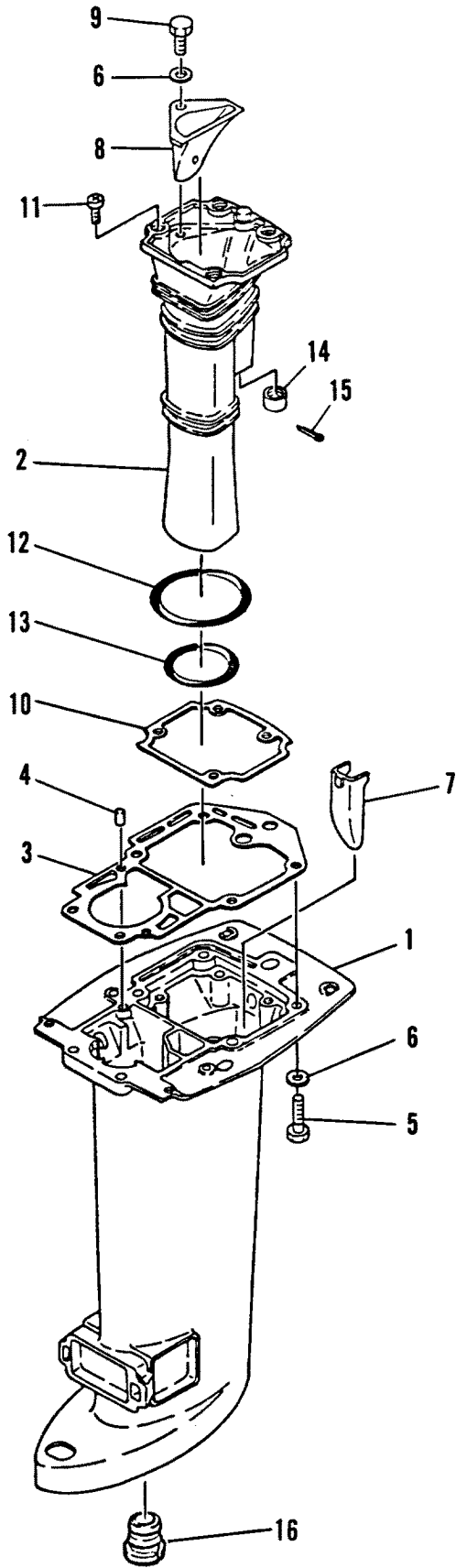
MOUNTING SYSTEM



MOUNTING SYSTEM

REF. NO.	PART NO.	SYM.	QTY.	DESCRIPTION
1	811165M		1	MOUNTING BRACKET
2	22-82369M		1	GREASE FITTING
3	81439M		1	CAP
4	23-81930M		2	BUSHING MS-235090 ML-535640 ES-251315 EL-553065 & BELOW
5	26-84838M		1	SEAL
6	10-84839M		4	BOLT
7	26-84840M		1	SEAL
8	80657M		1	BRACKET
9	17-82364M		1	DOWEL PIN
10	10-82423M		1	BOLT
11	12-82214M		3	WASHER
12	84841M		1	MOUNT (UPPER FRONT)
13	10-83539M		2	BOLT
14	11-82395M		3	NUT
15	12-82219M		3	WASHER
16	27-80662M		3	GASKET
17	82557M		2	MOUNT (UPPER SIDE)
18	11-82396M		2	NUT
19	27-81612M		2	GASKET
20	84842M		1	HOUSING (PORT)
21	84843M		1	HOUSING (STARBOARD)
22	10-84844M		2	BOLT
23	10-41893M		2	BOLT
24	12-82217M		4	WASHER
25	11-82382M		4	NUT
26	84846M		1	MOUNT (LOWER FRONT)
27	84847M		1	COVER
28	10-43106M		2	BOLT
29	84848M		2	MOUNT (LOWER SIDE)
4A	23-826982M		1	BUSHING MS-235091 ML-535641 ES-251316 EL-553066 & UP

DRIVESHAFT HOUSING

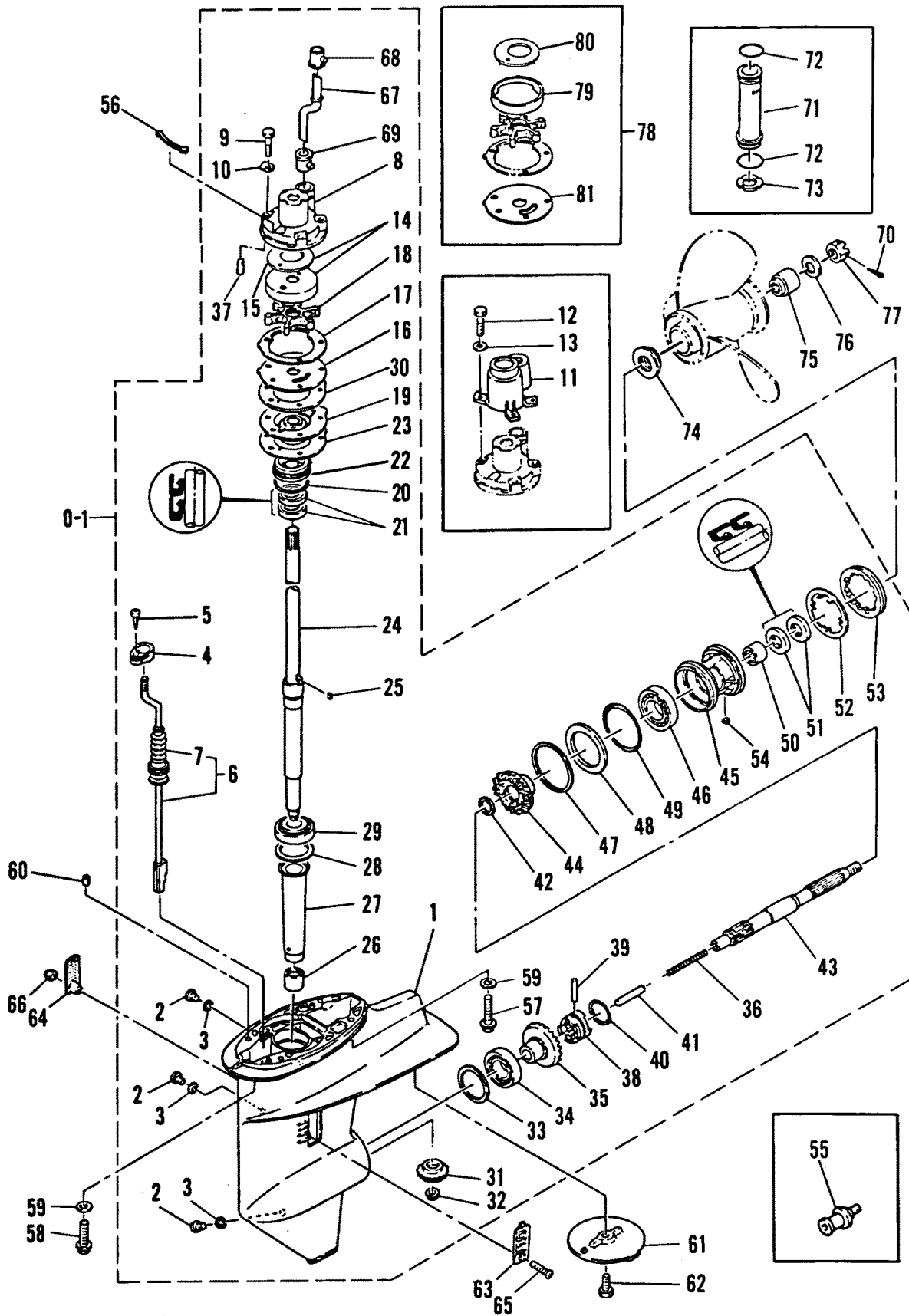


DRIVESHAFT HOUSING

REF. NO.	PART NO.	SYM.	QTY.	DESCRIPTION
1	1587-9244M		1	DRIVESHAFT HOUSING (SHORT) MS-235090 ML-535640 ES-251315 EL-553065 & UP
	1587-7843M		1	DRIVESHAFT HOUSING (LONG) MS-235090 ML-535640 ES-251315 EL-553065 & UP
2	811170M		1	EXHAUST MANIFOLD
3	27-84775M	●	1	GASKET
4	17-82364M		2	DOWEL PIN
5	10-95416M		6	BOLT
6	12-82217M		7	WASHER
7	84776M		1	GUIDE (SHORT)
	84777M		1	GUIDE (LONG)
8	84778M		1	EXHAUST GUIDE
9	10-95206M		1	BOLT
10	27-81573M		1	GASKET
11	10-83870M		4	SCREW
12	26-84781M		1	SEAL (UPPER)
13	26-84781M		1	SEAL (LOWER)
14	26-97635M		1	SEAL (SHORT)
	26-84782M		1	SEAL (LONG)
15	18-82132M		1	COTTER PIN
16	26-43114M		1	SEAL
1	1587-826990M		1	DRIVESHAFT HOUSING (SHORT) MS-235091 ML-535641 ES-251316 EL-553066 & UP
	1587-827111M		1	DRIVESHAFT HOUSING (LONG) MS-235091 ML-535641 ES-251316 EL-553066 & UP
17	827177M		1	DAMPER MS-235091 ML-535641 ES-251316 EL-553066 & UP

● = COMPONENT OF POWERHEAD GASKET SET [27-96658] (MANUAL) ; [27-811996M] (ELECTRIC)

GEAR HOUSING ASSEMBLY



GEAR HOUSING ASSEMBLY

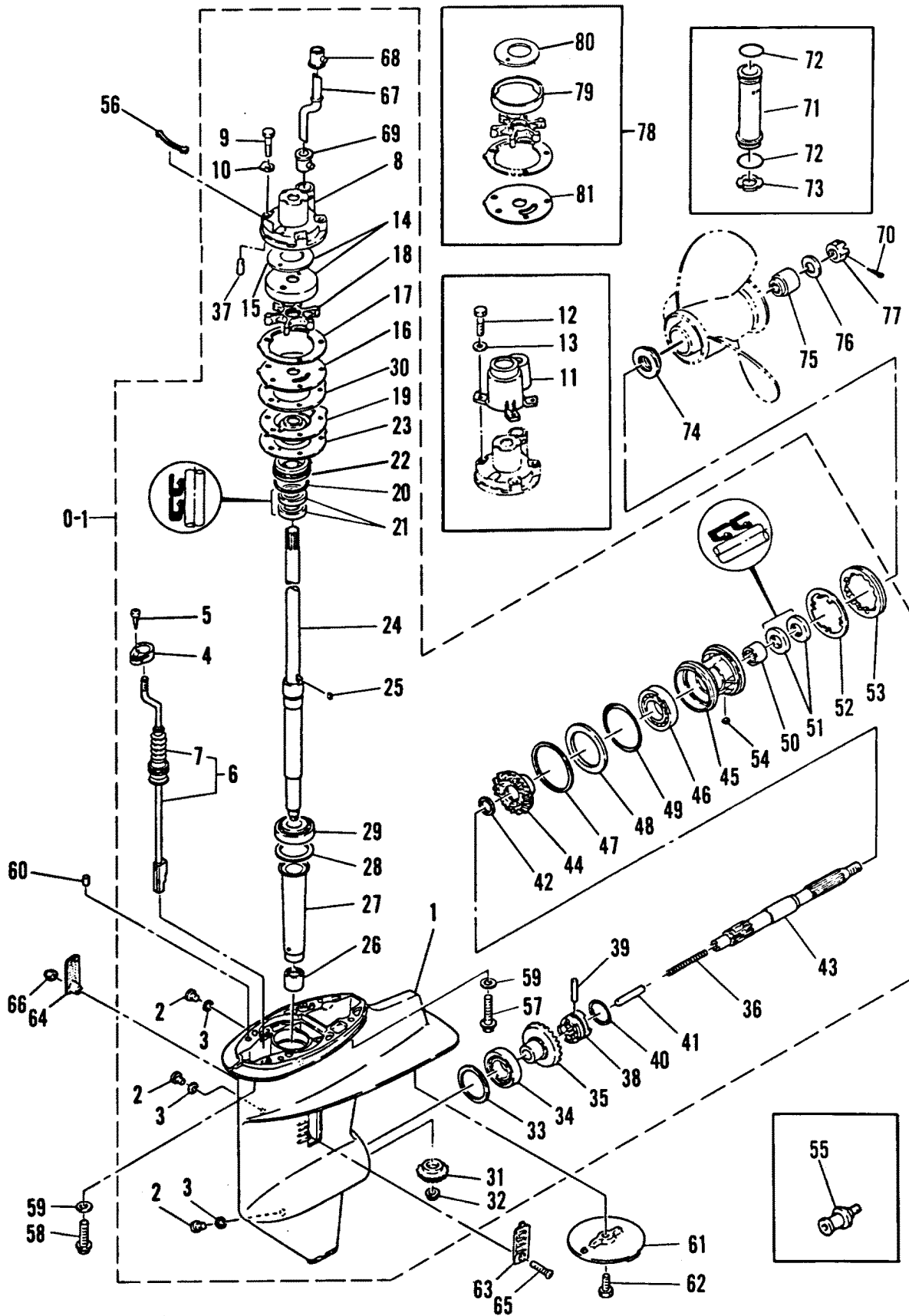
REF. NO.	PART NO.	SYM.	QTY.	DESCRIPTION
0-1	1651-811171M		1	GEAR HOUSING ASSEMBLY (SHORT)
	1651-811172M		1	GEAR HOUSING ASSEMBLY (LONG)
1	1651-9362M		1	GEAR HOUSING
2	22-81924M		3	PLUG
3	27-81987M		3	GASKET
4	84787M		1	RETAINER
5	10-84788M		1	SCREW
6	19114M		1	SHIFT SHAFT (SHORT)
	19115M		1	SHIFT SHAFT (LONG)
7	82914M		1	BOOT
8	46-95651M	◇	1	WATER PUMP HOUSING
9	10-84790M	◇	3	BOLT (SHORT)
10	12-84791M		3	WASHER (SHORT)
11	84792M		1	COVER (LONG)
12	10-83285M		3	BOLT (LONG)
13	12-82214M		3	WASHER (LONG)
14	95652M	◇	1	INSERT
15	27-95653M	◇	1	SEAL
16	95654M	◇	1	BASE PLATE
17	27-41273M	▲◇	1	GASKET
18	47-84797M	◇	1	IMPELLER
19	811173M		1	PROTECTOR
20	25-84054M	▲	1	O-RING
21	26-82233M	▲	2	OIL SEAL
22	41271M		1	COVER
23	27-41272M	▲	1	GASKET
24	45-84800M		1	DRIVE SHAFT (SHORT)
	45-84801M		1	DRIVE SHAFT (LONG)
25	28-81603M	◇	1	KEY
26	29-84803M		1	ROLLER BEARING (LOWER)
27	23-84804M		1	SLEEVE
28	15-19117M		AR	SHIM (0.10MM)
	15-19118M		AR	SHIM (0.12MM)
	15-19119M		AR	SHIM (0.15MM)
	15-19120M		AR	SHIM (0.18MM)
	15-19121M		AR	SHIM (0.30MM)
	15-19122M		AR	SHIM (0.40MM)
	15-19123M		AR	SHIM (0.50MM)
29	31-84805M		1	ROLLER BEARING (UPPER)
30	27-95656M	◇▲	1	GASKET
31	43-84806M		1	PINION GEAR
32	11-84807M		1	NUT

◇ = COMPONENT OF WATER REPAIR KIT [95661M]

▲ = COMPONENT OF LOWER UNIT GASKET SET [27-95660M]

CONTINUED ON NEXT PAGE ➡

GEAR HOUSING ASSEMBLY



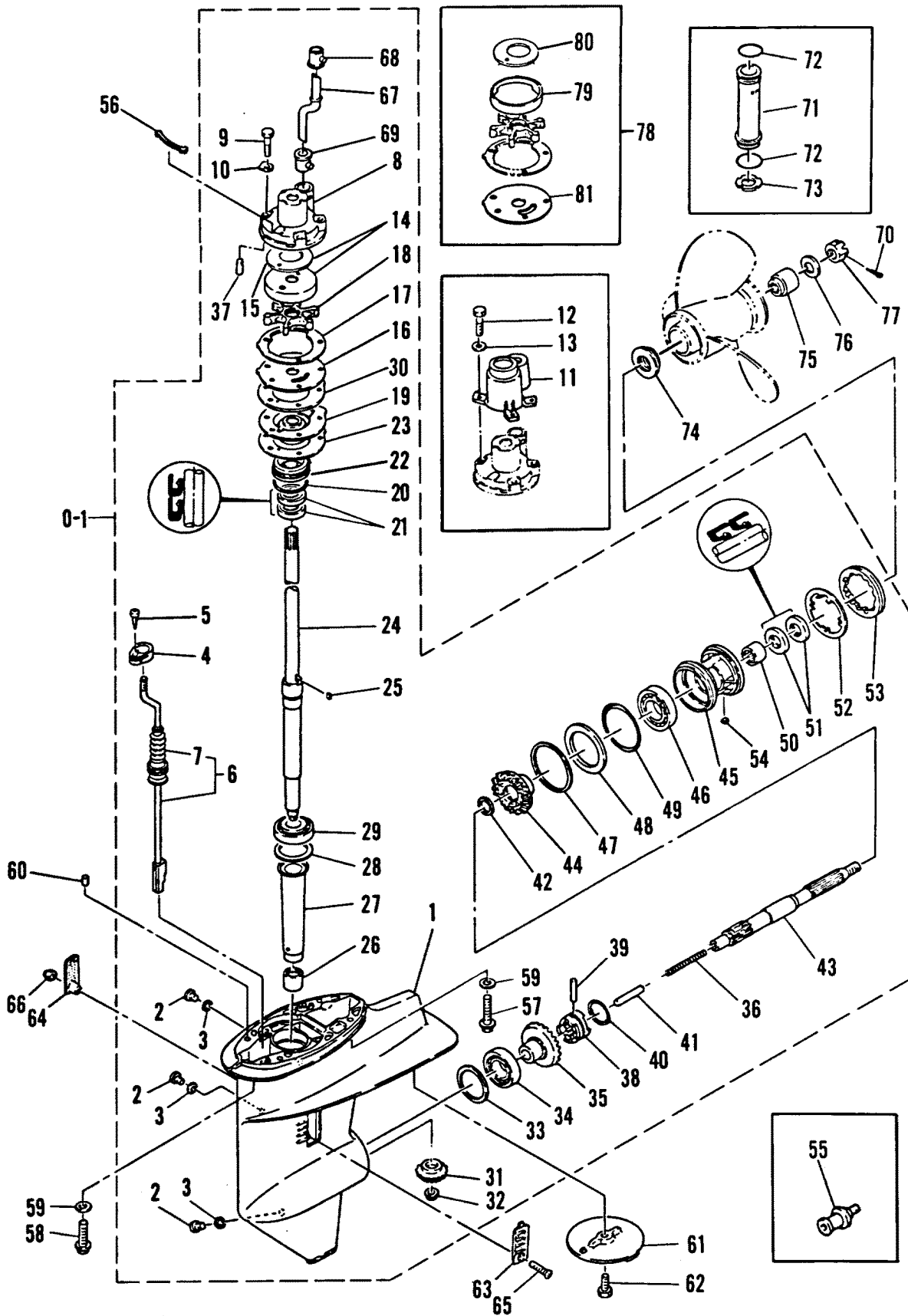
GEAR HOUSING ASSEMBLY

REF. NO.	PART NO.	SYM.	QTY.	DESCRIPTION
0-1	1651-811171M		1	GEAR HOUSING ASSEMBLY (SHORT)
	1651-811172M		1	GEAR HOUSING ASSEMBLY (LONG)
33	15-18954M		AR	SHIM (0.10MM)
	15-18955M		AR	SHIM (0.12MM)
	15-18956M		AR	SHIM (0.15MM)
	15-18957M		AR	SHIM (0.18MM)
	15-18958M		AR	SHIM (0.30MM)
	15-18959M		AR	SHIM (0.40MM)
	15-18960M		AR	SHIM (0.50MM)
34	31-82321M		1	ROLLER BEARING (FORWARD)
35	43-84808M		1	FORWARD GEAR
36	24-82078M		1	SPRING
37	17-41275M		2	DOWEL PIN
38	52-81644M		1	CLUTCH
39	17-81899M		1	CROSS PIN
40	53-80678M		1	RING
41	80680M		1	PLUNGER
42	12-81831M		1	THRUST WASHER
43	44-19124M		1	PROPELLER SHAFT
44	43-84810M		1	REVERSE GEAR
45	811174M		1	BEARING CARRIER
46	30-82295M		1	ROLLER BEARING
47	15-19125M		AR	SHIM (0.10MM)
	15-19126M		AR	SHIM (0.12MM)
	15-19127M		AR	SHIM (0.15MM)
	15-19128M		AR	SHIM (0.18MM)
	15-19129M		AR	SHIM (0.30MM)
	15-19130M		AR	SHIM (0.40MM)
	15-19131M		AR	SHIM (0.50MM)
48	12-81632M		1	THRUST WASHER
49	25-811175M	▲	1	O-RING
50	31-82315M		1	ROLLER BEARING
51	26-84813M	▲	2	OIL SEAL
52	14-84814M		1	TAB WASHER
53	11-81619M		1	COVER NUT
54	28-81916M		1	KEY
55	22-95633M		1	FLUSH PLUG
56	23-84819M		1	SEAL
57	10-81711M		2	BOLT
58	10-94720M		2	BOLT
59	12-82220M		4	WASHER
60	17-82364M		2	DOWEL PIN

▲ = COMPONENT OF LOWER UNIT GASKET SET [27-95660M]

CONTINUED ON NEXT PAGE ➡

GEAR HOUSING ASSEMBLY



GEAR HOUSING ASSEMBLY

REF. NO.	PART NO.	SYM.	QTY.	DESCRIPTION
61	82795M		1	TRIM TAB
62	10-82477M		1	BOLT
63	41896M		1	COVER (PORT)
64	41897M		1	COVER (STARBOARD)
65	10-84300M		1	SCREW
66	11-81781M		1	NUT
67	32-81605M		1	WATER TUBE (SHORT)
	32-84816M		1	WATER TUBE (LONG)
68	26-84818M	▲	1	SEAL (UPPER)
69	26-80239M	◇	1	SEAL (LOWER)
70	18-82132M		1	COTTER PIN
71	84820M		1	WATER TUBE EXTENSION - LONG
72	25-84821M		2	O-RING (LONG)
73	41277M		1	PLATE (LONG)
74	12-81650M		1	THRUST HUB (FORWARD)
75	84823M		1	THRUST HUB (REVERSE)
76	12-82222M		1	WASHER
77	11-81774M		1	PROPELLER NUT
78	46-95657M		1	CHROME WATER PUMP KIT
79	95658M		1	INSERT
80	27-95653M		1	SEAL (Seal attached to insert in Kit 95657M)
81	95659M		1	OUTER PLATE
	95659M		1	OUTER PLATE

◇ = COMPONENT OF WATER REPAIR KIT [95661M]

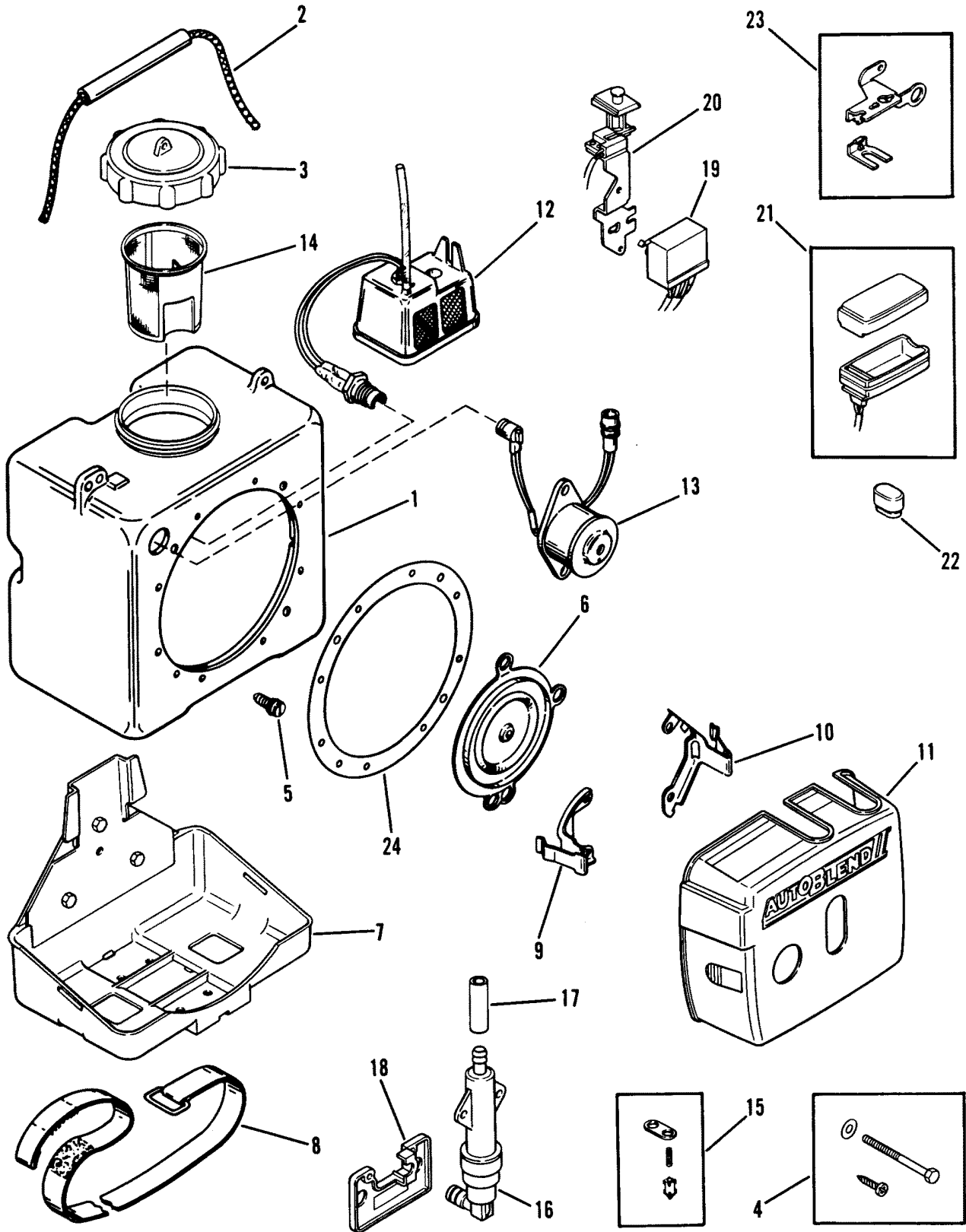
▲ = COMPONENT OF LOWER UNIT GASKET SET [27-95660M]

FUEL TANK AND FUEL LINE ASSEMBLY

REF. NO.	PART NO.	SYM.	QTY.	DESCRIPTION
1	37-14617M		1	DECAL, SIDE (ENGLISH)
	37-95504M		1	DECAL, SIDE (FRENCH)
2	37-95489M		1	DECAL, TOP (ENGLISH)
	37-95503M		1	DECAL, TOP (FRENCH)
3	36-18962M		1	FUEL TANK CAP
4	95499M		1	FUEL METER ASSEMBLY
5	12-95501M		4	SEAL
6	10-95502M		4	SCREW
7	27-95500M		1	GASKET
8	32-822379A12		1	FUEL LINE ASSEMBLY
9	30185A3		1	BAYONET BODY ASSEMBLY
10	30187		1	STEM
11	25-20415		1	O-RING
12	24-30189		1	SPRING
13	30188		1	WASHER
14	22-89771--1		1	FITTING
15	32-16571M		1	HOSE
16	17149M		1	PRIMER BULB
17	32-16571M		1	HOSE
18	54-16574M		4	CLAMP
19	22-13563A3		1	FUEL CONNECTOR

TO ORDER REPLACEMENT OR ADDITIONAL FUEL TANK ASSEMBLY, ORDER FUEL TANK ASSEMBLY [1259-812410A1]. SEE "FUEL TANK AND FUEL LINE ASSEMBLY - NOT ORIG. EQUIP." FOR PARTS BREAKDOWN.

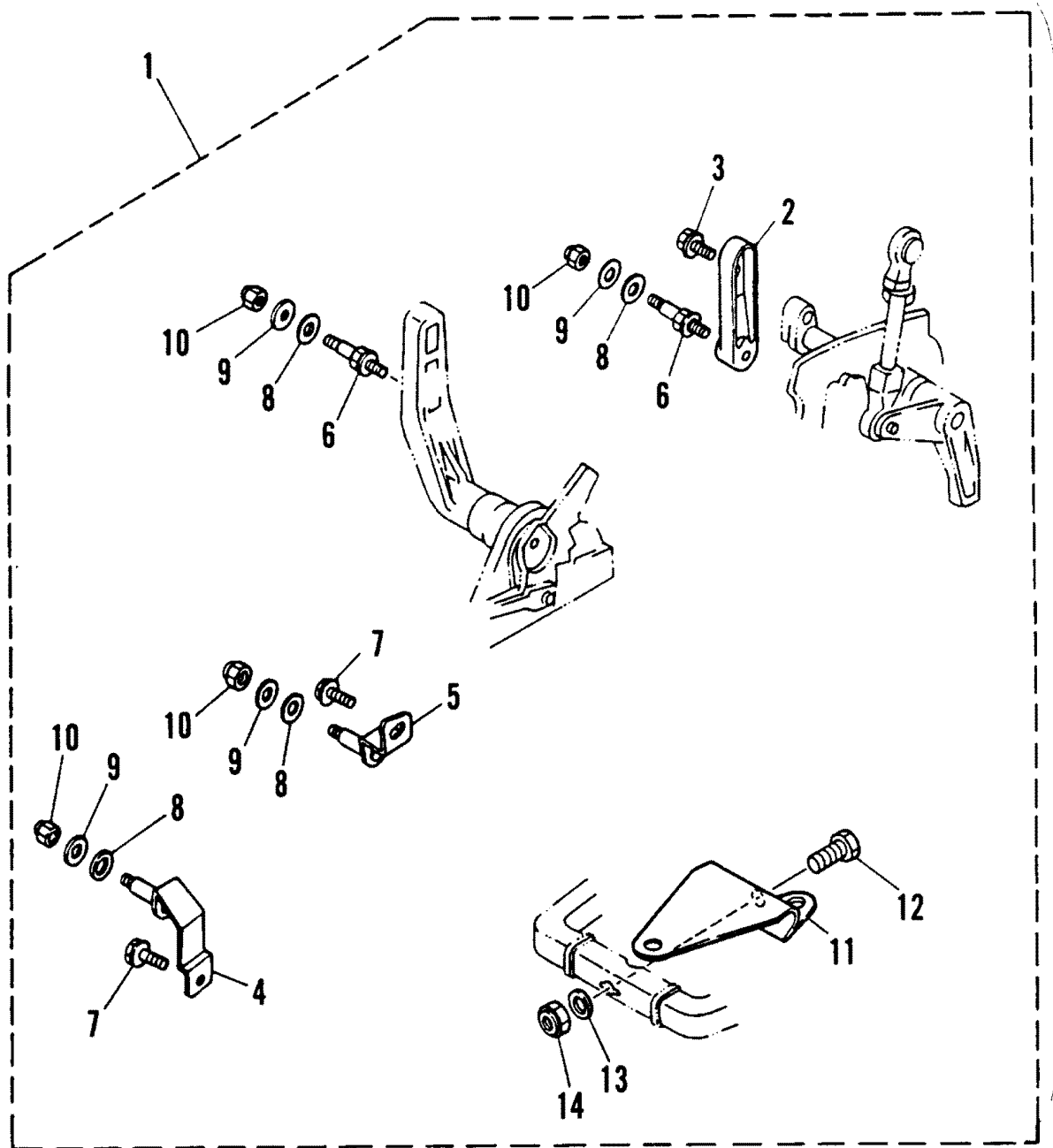
AUTO-BLEND



AUTO-BLEND

REF. NO.	PART NO.	SYM.	QTY.	DESCRIPTION
-	13019--5		1	AUTO-BLEND
1	16612		1	OIL TANK KIT
2	13996		1	HANDLE KIT
3	36-16619		1	CAP
4	16614		1	HARDWARE KIT
5	19-13979		1	DRAIN PLUG KIT
6	16611		1	DIAPHRAGM KIT
7	16620		1	MOUNTING BRACKET KIT
8	13993		1	BAND
9	13983		1	BRACKET (LEFT)
10	13984		1	BRACKET (RIGHT)
11	16626		1	COVER
12	35-16624		1	OIL FILTER AND LEVEL SENSOR KIT
13	16625		1	HORN KIT
14	16618		1	OIL STRAINER
15	21-16615		1	CHECK VALVE KIT
16	35-18576		1	FUEL FILTER KIT
17	32-13992		1	VINYL TUBE
18	16621		1	PLATE
19	16627		1	MODULE KIT
20	16628		1	TEST BUTTON KIT
21	16629		1	BATTERY CASE KIT (USE 9 VOLT BATTERY)
22	16630		1	GROMMET KIT
23	16631		1	BRACKET KIT
24	27-16616		1	GASKET KIT

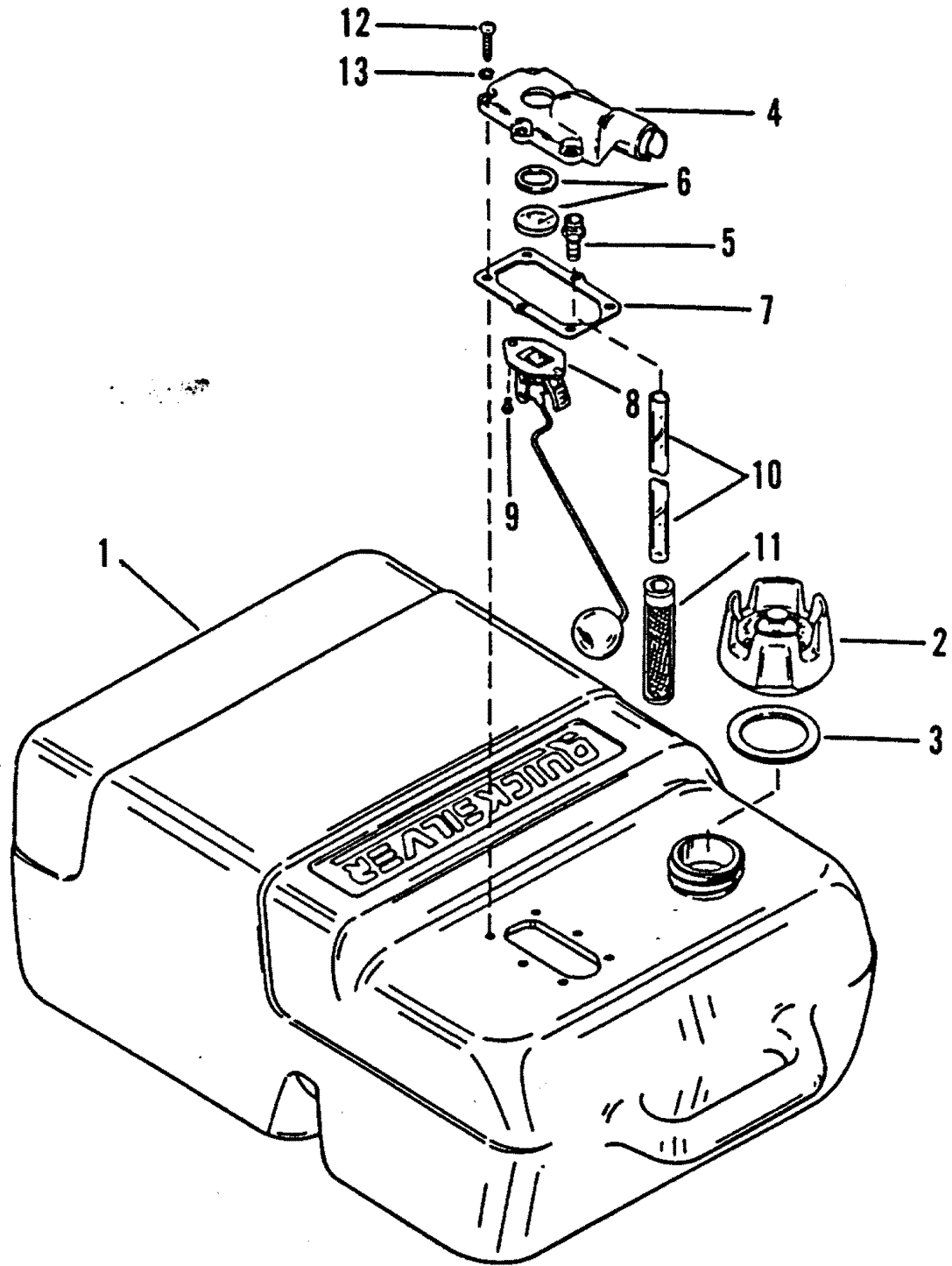
REMOTE CONTROL ATTACHING KIT



REMOTE CONTROL ATTACHING KIT

REF. NO.	PART NO.	SYM.	QTY.	DESCRIPTION
1	816845A1		1	ATTACHING KIT
2	811187M		1	THROTTLE LEVER
3	10-811188M		1	BOLT
4	811189M		1	BRACKET
5	811190M		1	BRACKET
6	814976M		2	HOOK
7	10-811188M		2	BOLT
8	12-814977M		4	WASHER
9	12-814978M		4	WASHER
10	11-814979M		4	NUT
11	91635M		1	STEERING HOOK
12	10-91636M		1	BOLT
13	12-82220M		1	WASHER
14	11-81785M		1	NUT

FUEL TANK AND FUEL LINE ASSEMBLY (NOT ORIG EQUIPMENT TANK)



FUEL TANK AND FUEL LINE ASSEMBLY (NOT ORIG EQUIPMENT TANK)

REF. NO.	PART NO.	SYM.	QTY.	DESCRIPTION
1	1259-812410A1		1	FUEL TANK ASSEMBLY (PLASTIC -6.6 GALLONS)
2	36-816976A1		1	FILLER CAP
3	27-816977		1	GASKET
4	17792A1		1	PICK-UP BODY ASSEMBLY
5	18030		1	ADAPTOR
6	98542A1		1	WINDOW ASSEMBLY
7	27-18026		1	GASKET
8	17971A2		1	FUEL GAUGE ASSEMBLY
9	10-62568		2	SCREW
10	32-18028		1	HOSE
11	35-18029		1	FILTER
12	10-18027		6	SCREW
13	12-29070		6	WASHER

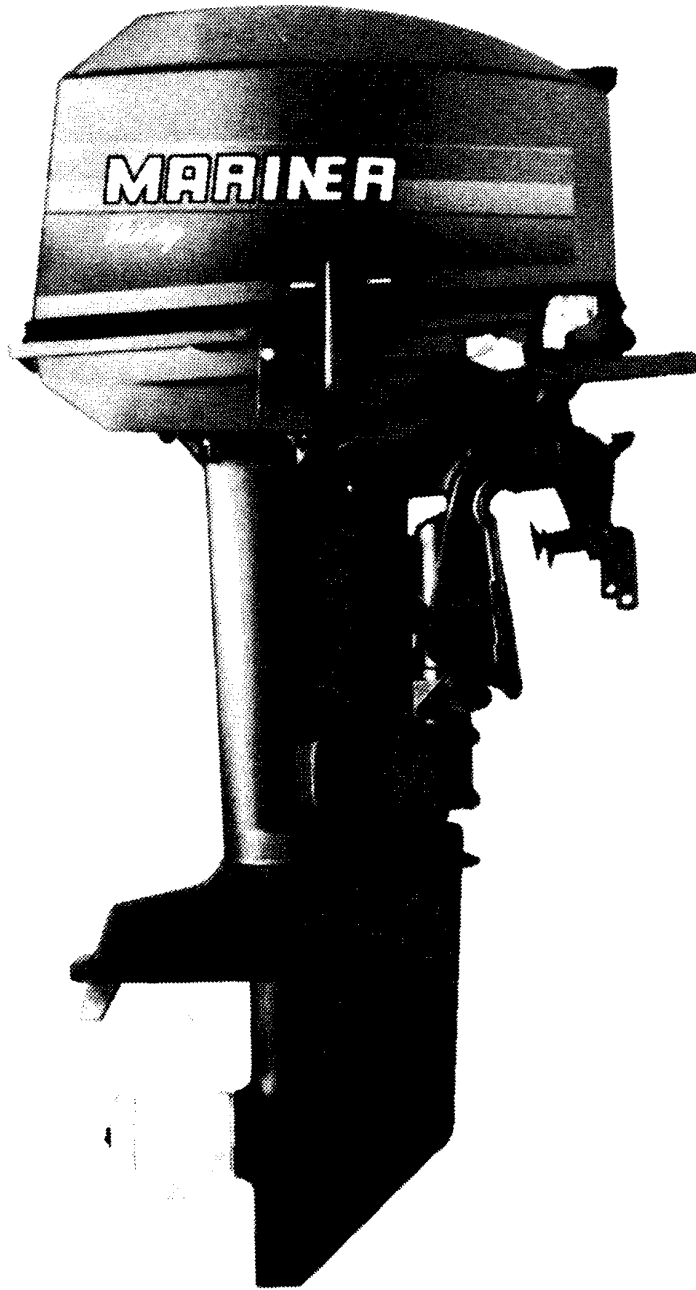
TO ORDER REPLACEMENT PARTS FOR THE ORIGINAL FUEL TANK OR FUEL LINE ASSEMBLY, SEE "FUEL TANK AND FUEL LINE ASSEMBLY - ORIG. EQUIP.)

PROP CHART

MARINER 30 H.P.

FULL THROTTLE RPM:
4500-5500

GEAR RATIO: 1.84:1



PROP CHART

REF. NO.	PART NO.	SYM.	QTY.	DESCRIPTION
-	48-84977M		1	PROPELLER (PITCH 14")(ALUMINUM) 3 BLADES
-	48-82827M		1	PROPELLER (PITCH 13")(ALUMINUM) 3 BLADES
-	48-88168A4		1	PROPELLER (PITCH 12")(STEEL) 3 BLADES
-	48-84976M		1	PROPELLER (PITCH 11-1/4")(ALUMINUM) 3 BLADES EQUIVALENT TO PROPELLER FURNISHED WITH ENGINE.
-	48-81649M		1	PROPELLER (PITCH 10-1/2")(ALUMINUM) 3 BLADES
-	48-88166A4		1	PROPELLER (PITCH 9")(STEEL) 3 BLADES
-	48-81647M		1	PROPELLER (PITCH 9")(ALUMINUM) 3 BLADES
-	48-81648M		1	PROPELLER (PITCH 8")(ALUMINUM) 3 BLADES

PARTS INDEX

Part Number	Description	Pg.	Ref. No.	Part Number	Description	Pg.	Ref. No.
11932M	COVER	41	56	80606M	DIAPHRAGM	31	2
11935M	CUP (SEE NOTE #2)	31	25	80607M	COVER	31	9
11935M	CUP (SEE NOTE#1)	31	25	80611M	PLATE	31	3
13019--5	AUTO-BLEND	55	-	80620M	BRACKET	31	26
13983	BRACKET (LEFT)	55	9	80633M	FRICTION PLATE	39	5
13984	BRACKET (RIGHT)	55	10	80643M	HOOK (FRONT)	39	39
13993	BAND	55	8	80645M	ROD	39	37
13996	HANDLE KIT	55	2	80648M	TILT CAM	39	35
14187M	FUEL CONNECTOR	31	17	80651M	SHIFT ROD	37	20
14230M	CHOKE SOLENOID	15	14	80652M	CONNECTOR	37	21
14231M	RETAINER	15	18	80657M	BRACKET	43	8
14237M	FLOAT BOWL	29	1	80680M	PLUNGER	49	41
14238M	JOINT	35	40	81030M	COVER	19	12
16611	DIAPHRAGM KIT	55	6	811015M	HOOK	25	25
16612	OIL TANK KIT	55	1	811027M	REED VALVE ASSEMBLY	23	16
16614	HARDWARE KIT	55	4	811031M	AIR INTAKE COVER (INNER)	23	1
16618	OIL STRAINER	55	14	811036M	PILOT JET (#58)	29	10
16620	MOUNTING BRACKET KIT	55	7	811037M	THROTTLE ARM	29	18
16621	PLATE	55	18	811038M	CARBURETOR REPAIR KIT	23	-
16625	HORN KIT	55	13	811043M	OIL INJECTION PUMP	25	5
16626	COVER	55	11	811048M	LINK	25	15
16627	MODULE KIT	55	19	811049M	CONTROL LEVER	25	16
16628	TEST BUTTON KIT	55	20	81107M	LINK	9	42
16629	BATTERY CASE KIT (USE 9 VOLT BATTERY)	55	21	811122M	LINK	25	19
16630	GROMMET KIT	55	22	811135M	BRACKET (STARBOARD)	7	23
16631	BRACKET KIT	55	23	811139M	BRACKET	25	35
16715M	CONNECTOR	25	13	811140M	BRACKET	25	34
16715M	JOINT	33	33	811141M	BRACKET	25	32
17149M	PRIMER BULB	53	16	811144M	OIL TANK SUB ASSEMBLY	25	39
17792A1	PICK-UP BODY ASSEMBLY	59	4	811151M	OIL LEVER GAUGE	25	23
17971A2	FUEL GAUGE ASSEMBLY	59	8	811152M	CABLE	7	40
18030	ADAPTOR	59	5	811153M	TIMING PLATE - ELECTRIC	7	28
18973M	HOUSING	21	16	811160M	HOOK (FRONT)	3	10
19111M	PLATE	41	50	811161M	WINDOW	3	13
19113M	BRACKET	41	48	811165M	MOUNTING BRACKET	43	1
19114M	SHIFT SHAFT (SHORT)	47	6	811166M	MAGNETO CONTROL LEVER (ELECTRIC)	33	26
19115M	SHIFT SHAFT (LONG)	47	6	811167M	RETAINER (ELECTRIC)	33	30
19139M	RETIANER	33	36	811168M	ROD	33	32
30185A3	BAYONET BODY ASSEMBLY	53	9	811169M	GEAR SHIFT HANDLE	37	1
30187	STEM	53	10	811170M	EXHAUST MANIFOLD	45	2
30188	WASHER	53	13	811173M	PROTECTOR	47	19
41271M	COVER	47	22	811174M	BEARING CARRIER	49	45
41277M	PLATE (LONG)	51	73	811176M	BASE ASSEMBLY	11	2
41308M	EMERGENCY SIGNAL - ELECTRIC	5	20	811179M	BRACKET (ELECTRIC)	13	1
41892M	THROTTLE CABLE ASSEMBLY	33	11	811181M	C.D.I. UNIT (ELECTRIC)	13	12
41896M	COVER (PORT)	51	63	811182M	PLATE	15	4
41897M	COVER (STARBOARD)	51	64	811186M	PLATE	15	34
42433M	HOOK (REAR)	3	8	811187M	THROTTLE LEVER	57	2
43113M	FUEL PUMP ASSEMBLY	31	1	811189M	BRACKET	57	4
47341A1	EMERGENCY STARTER ROPE	7	34	811190M	BRACKET	57	5
80048M	HANDLE	39	17	81134M	THROTTLE CONTROL SHAFT	35	42
80510M	SPACER	5	13	81163M	HOLDER - ELECTRIC	5	21
80570M	INTAKE MANIFOLD	23	22	811911M	OIL LEVER GAUGE	25	23
80591M	FLOAT	29	3	811914M	CAP	39	27
80593M	INLET NEEDLE VALVE ASSEMBLY	29	9	81191M	RETAINER	23	8
				81388M	CAP	39	27
				81439M	CAP	39	4
				81439M	CAP	43	3

PARTS INDEX

Part Number	Description	Pg.	Ref. No.	Part Number	Description	Pg.	Ref. No.
814491M	HANDLE	7	17	84863M	THROTTLE CONTROL LEVER (ELECTRIC)	35	41
814492M	COVER	7	19	84867M	SHIFT ROD LEVER	37	17
814593M	CHAIN	25	27	84868M	BRACKET (MANUAL)	13	1
814594M	PLATE	25	29	84869M	DAMPER	13	2
814595M	OIL STRAINER	25	22	84872M	C.D.I. UNIT (MANUAL)	13	12
814976M	HOOK	57	6	84873M	HOLDER	13	13
814990M	IGNITION COIL (ELECTRIC)	13	15	84874M	IGNITION COIL (MANUAL)	13	15
814995M	RECTIFIER	15	6	84877M	PULSER	11	9
81585M	GRIP	33	2	84879M	IGNITION COIL	11	3
81595M	LINK ROD	37	5	84881M	LIGHTING COIL	11	6
816845A1	ATTACHING KIT	57	1	84885M	STOP	11	18
82557M	MOUNT (UPPER SIDE)	43	17	84886M	CAP	11	19
827177M	DAMPER	45	17	84887M	CAM	11	21
82795M	TRIM TAB	51	61	84890M	GUIDE	7	14
82857M	STOPPER	41	44	84891M	SEAL	7	22
82895M	FRICTION PIECE	33	23	84894M	PAUL	7	7
82914M	BOOT	47	7	84900M	SEAL	3	6
83566M	RETAINER	33	35	84901M	SEAL	3	7
83569M	BASE PLATE	33	37	84913M	LEVER	5	14
83960M	CHOKE KNOB	23	10	84930M	BRACKET	17	17
84141M	DIAPHRAGM	31	8	84937M	FUSE ASSEMBLY	15	11
84305M	JOINT	35	45	84939M	BRACKET (ELECTRIC)	9	50
84411M	HOOK	15	15	91635M	STEERING HOOK	57	11
84459M	BUSHING	37	9	91640M	LOCK/RELEASE LEVER	39	31
84460M	PLUNGER	37	10	91641M	COVER	39	32
84466M	BRACKET (PORT)	7	24	91643M	LINK	39	34
84653M	CAM	37	2	91650M	LINK	37	29
84701M	PULL	15	16	92599M	BRACKET (MANUAL)	9	50
84708M	PLATE	15	31	95420M	STEERING HANDLE ASSEMBLY	33	0-1
84732M	ANODE	19	8	95497M	RUBBER HANDLE	33	3
84736M	HOUSING	19	19	95499M	FUEL METER ASSEMBLY	53	4
84761M	CHOKE LEVER	23	9	95551M	LEVER	41	57
84763M	ROD	23	7	95643M	BRACKET	15	3
84766M	MAIN NOZZLE	29	7	95650M	KNOB	39	22
84767M	MAIN JET (#135)	29	8	95652M	INSERT	47	14
84768M	LEVER	29	14	95654M	BASE PLATE	47	16
84770M	RETAINER	29	16	95658M	INSERT	51	79
84771M	THROTTLE ROD	29	17	95659M	OUTER PLATE	51	81
84776M	GUIDE (SHORT)	45	7	95659M	OUTER PLATE	51	81
84777M	GUIDE (LONG)	45	7	95676M	MOLDING	3	3
84778M	EXHAUST GUIDE	45	8	95679M	THERMOSTAT	19	16
84787M	RETAINER	47	4	95680M	EXHAUST COVER (OUTER)	19	22
84792M	COVER (LONG)	47	11	95681M	EXHAUST COVER (INNER)	19	23
84820M	WATER TUBE EXTENSION - LONG	51	71	95682M	AIR INTAKE COVER (OUTER)	23	2
84823M	THRUST HUB (REVERSE)	51	75	96341M	TIMING PLATE - MANUAL	7	26
84833M	SHAFT	39	9	96360M	PINION STOP SET	17	2
84835M	SHAFT	39	21	96362M	COVER (FRONT)	17	4
84837M	HOOK (REAR)	39	38	96365M	ARMATURE	17	7
84841M	MOUNT (UPPER FRONT)	43	12	96366M	STATOR	17	8
84842M	HOUSING (PORT)	43	20	96367M	BRUSH (HOLDER)	17	10
84843M	HOUSING (STARBOARD)	43	21	96368M	BRUSH (POSITIVE)(+)	17	9
84846M	MOUNT (LOWER FRONT)	43	26	96369M	BRUSH (NEGATIVE)(-)	17	11
84847M	COVER	43	27	96370M	COVER (REAR)	17	13
84848M	MOUNT (LOWER SIDE)	43	29	96649M	COVER	11	14
84852M	RETAINER	33	22	96664M	STEERING HANDLE	33	1
84856M	THROTTLE SHAFT	33	7	97131M	ARM	37	24
84858M	MAGNETO CONTROL LEVER (MANUAL)	33	26	97137M	THROTTLE INDICATOR	33	4
84859M	RETAINER (MANUAL)	33	30				

PARTS INDEX

Part Number	Description	Pg.	Ref. No.	Part Number	Description	Pg.	Ref. No.
97138M	THROTTLE CONTROL LEVER (MANUAL)	35	41	10-82515M	SCREW	29	5
97139M	SHIFT ROD LEVER	37	13	10-82521M	SCREW	11	4
97694M	PINION	17	3	10-82521M	SCREW	11	7
97756M	STOPPER	5	4	10-82521M	SCREW	15	7
98542A1	WINDOW ASSEMBLY	59	6	10-82522M	SCREW	31	10
98915M	INSULATOR	15	27	10-82924M	BOLT	39	28
10-11832M	SCREW - ELECTRIC	7	29	10-83285M	BOLT	7	31
10-14232M	SCREW	15	21	10-83285M	BOLT	17	19
10-14232M	SCREW	33	38	10-83285M	BOLT	17	23
10-18027	SCREW	59	12	10-83285M	BOLT	23	25
10-18974M	BOLT	39	24	10-83285M	BOLT (ELECTRIC)	19	31
10-41839M	BOLT (ELECTRIC)	19	4	10-83285M	BOLT (LONG)	47	12
10-41884M	BOLT (QTY. OF 9 ON ELECTRIC)	19	5	10-83285M	BOLT (QTY. OF 10 ON ELECTRIC)	19	26
10-41885M	BOLT	19	30	10-83285M	BOLT- ELECTRIC	13	24
10-41885M	BOLT (MANUAL)	19	4	10-83539M	BOLT	9	44
10-41889M	SCREW	31	12	10-83539M	BOLT	31	18
10-41893M	BOLT	43	23	10-83539M	BOLT	33	16
10-43106M	BOLT	43	28	10-83539M	BOLT	33	24
10-62568	SCREW	59	9	10-83539M	BOLT	37	33
10-80091M	SCREW	29	15	10-83539M	BOLT	43	13
10-80349M	DRAIN VALVE	29	25	10-83539M	BOLT (MANUAL)	19	14
10-80573M	IDLE MIXTURE SCREW	29	12	10-83870M	SCREW	45	11
10-811022M	BOLT	19	18	10-84247M	BOLT	7	15
10-811025M	GOLT (ELECTRIC)	19	14	10-84300M	SCREW	51	65
10-811032M	SCREW	23	3	10-84313M	BOLT	11	22
10-811033M	SCREW	23	4	10-84315M	BOLT	5	18
10-811138M	BOLT	25	30	10-84315M	BOLT	9	41
10-811177M	SCREW	11	10	10-84315M	BOLT	11	20
10-811180M	BOLT	13	5	10-84342M	BOLT	7	11
10-811188M	BOLT	57	3	10-84657M	BOLT - MANUAL	7	27
10-811188M	BOLT	57	7	10-84709M	SCREW	15	32
10-811916M	SCREW	33	6	10-84788M	SCREW	47	5
10-813477M	BOLT	13	11	10-84790M	BOLT (SHORT)	47	9
10-813477M	BOLT	15	9	10-84830M	BOLT	37	4
10-813477M	BOLT	31	27	10-84830M	BOLT	41	49
10-813477M	BOLT	33	31	10-84839M	BOLT	43	6
10-814463M	IDLE SPEED SCREW	29	11	10-84844M	BOLT	43	22
10-814583M	BOLT	25	7	10-84929M	BOLT	17	14
10-814584M	BOLT	25	8	10-84931M	BOLT	17	18
10-815139M	ADJUSTMENT COLLAR	33	12	10-84931M	BOLT	19	27
10-81711M	BOLT	49	57	10-84931M	BOLT	33	15
10-81756M	SCREW	39	18	10-91636M	BOLT	57	12
10-82405M	BOLT	7	25	10-91772M	BOLT	3	4
10-82405M	BOLT	13	17	10-94526M	BOLT	21	17
10-82405M	BOLT	19	25	10-94526M	BOLT - ELECTRIC	13	27
10-82405M	BOLT	23	24	10-94720M	BOLT	49	58
10-82405M	BOLT	25	18	10-95206M	BOLT	45	9
10-82405M	BOLT	33	29	10-95209M	SCREW	19	9
10-82423M	BOLT	43	10	10-95416M	BOLT	45	5
10-82428M	BOLT	31	15	10-95502M	SCREW	53	6
10-82436M	BOLT	17	15	10-95554M	BOLT	41	55
10-82436M	SCREW	11	15	10-96382M	SCREW	39	6
10-82441M	BOLT	17	21	11-811147M	NUT	27	42
10-82442M	BOLT	7	35	11-814523M	SPEED NUT	3	15
10-82471M	BOLT	41	58	11-814979M	NUT	57	10
10-82477M	BOLT	51	62	11-81619M	COVER NUT	49	53
10-82499M	SCREW	11	11	11-81765M	NUT	33	13
10-82512M	SCREW	15	20	11-81767M	NUT	37	22
				11-81774M	PROPELLER NUT	51	77

PARTS INDEX

Part Number	Description	Pg.	Ref. No.	Part Number	Description	Pg.	Ref. No.
11-81781M	NUT	51	66	12-82214M	WASHER	21	18
11-81785M	NUT	57	14	12-82214M	WASHER	23	12
11-81787M	NUT	39	26	12-82214M	WASHER	31	16
11-82379M	NUT	25	14	12-82214M	WASHER	31	19
11-82379M	NUT	29	20	12-82214M	WASHER	33	17
11-82382M	NUT	7	13	12-82214M	WASHER	43	11
11-82382M	NUT	31	28	12-82214M	WASHER (LONG)	47	13
11-82382M	NUT	39	30	12-82214M	WASHER (QTY. OF 26 ON ELECTRIC)	19	15
11-82382M	NUT	41	60	12-82214M	WASHER - ELECTRIC	13	25
11-82382M	NUT	43	25	12-82217M	WASHER	5	11
11-82383M	NUT	5	6	12-82217M	WASHER	7	36
11-82388M	NUT	33	34	12-82217M	WASHER	17	16
11-82388M	NUT	37	26	12-82217M	WASHER	17	22
11-82389M	NUT	7	32	12-82217M	WASHER	39	7
11-82389M	NUT	13	8	12-82217M	WASHER	41	59
11-82389M	NUT	17	20	12-82217M	WASHER	43	24
11-82389M	NUT	23	13	12-82217M	WASHER	45	6
11-82395M	NUT	43	14	12-82219M	WASHER	43	15
11-82396M	NUT	43	18	12-82220M	WASHER	33	8
11-82537M	NUT	31	13	12-82220M	WASHER	49	59
11-83056M	NUT	33	25	12-82220M	WASHER	57	13
11-84807M	NUT	47	32	12-82222M	WASHER	51	76
11-96650M	NUT	11	16	12-83524M	WASHER - ELECTRIC	5	23
12-29070	WASHER	59	13	12-83768M	WASHER	25	9
12-80261M	WASHER	29	28	12-83768M	WASHER - ELECTRIC	23	26
12-80638M	PAD	39	19	12-83769M	WASHER	13	6
12-811039M	WASHER	25	1	12-84791M	WASHER (SHORT)	47	10
12-811146M	WASHER	27	41	12-84850M	WASHER	33	20
12-814592M	WASHER	25	26	12-95501M	SEAL	53	5
12-814977M	WASHER	57	8	12-95507M	WASHER	5	9
12-814978M	WASHER	57	9	12-96364M	WASHER KIT	17	6
12-81632M	THRUST WASHER	49	48	12-96651M	WASHER	11	17
12-81650M	THRUST HUB (FORWARD)	51	74	13-81865M	WAVE WASHER	9	48
12-81794M	WASHER	5	19	13-81865M	WAVE WASHER	37	30
12-81801M	WASHER	7	12	13-81867M	WAVE WASHER	9	43
12-81831M	THRUST WASHER	49	42	13-81869M	WAVE WASHER	5	15
12-81835M	WASHER	19	17	13-82186M	LOCKWASHER	29	21
12-81836M	WASHER	39	25	13-82186M	LOCKWASHER	31	11
12-81843M	WASHER	37	6	13-82186M	WASHER	11	5
12-81846M	WASHER	37	14	13-82186M	WASHER	11	8
12-81851M	WASHER (USE WHERE APPLICABLE)	37	3	13-82206M	LOCKWASHER	29	6
12-81873M	WASHER	39	10	13-82212M	LOCKWASHER	13	21
12-81969M	COLLAR	33	28	13-82212M	WASHER	13	9
12-81969M	COLLAR	37	28	13-82212M	WASHER	15	10
12-82209M	WASHER	29	23	13-84851M	WAVE WASHER	33	21
12-82211M	WASHER	9	47	14-84814M	TAB WASHER	49	52
12-82211M	WASHER	11	23	15-18954M	SHIM (0.10MM)	49	33
12-82211M	WASHER	15	8	15-18955M	SHIM (0.12MM)	49	33
12-82211M	WASHER	33	39	15-18956M	SHIM (0.15MM)	49	33
12-82211M	WASHER	37	31	15-18957M	SHIM (0.18MM)	49	33
12-82211M	WASHER	37	7	15-18958M	SHIM (0.30MM)	49	33
12-82213M	WASHER - ELECTRIC	7	30	15-18959M	SHIM (0.40MM)	49	33
12-82214M	WASHER	3	5	15-18960M	SHIM (0.50MM)	49	33
12-82214M	WASHER	7	16	15-19117M	SHIM (0.10MM)	47	28
12-82214M	WASHER	9	45	15-19118M	SHIM (0.12MM)	47	28
12-82214M	WASHER	11	13	15-19119M	SHIM (0.15MM)	47	28
12-82214M	WASHER	13	14	15-19120M	SHIM (0.18MM)	47	28
12-82214M	WASHER	13	22	15-19121M	SHIM (0.30MM)	47	28
12-82214M	WASHER	17	24	15-19122M	SHIM (0.40MM)	47	28

PARTS INDEX

Part Number	Description	Pg.	Ref. No.	Part Number	Description	Pg.	Ref. No.
15-19123M	SHIM (0.50MM)	47	28	23-19108M	SPACER	39	29
15-19125M	SHIM (0.10MM)	49	47	23-19112M	BUSHING	41	51
15-19126M	SHIM (0.12MM)	49	47	23-811041M	COLLAR	25	3
15-19127M	SHIM (0.15MM)	49	47	23-811078M	COLLAR	25	17
15-19128M	SHIM (0.18MM)	49	47	23-811145M	SPACER	25	40
15-19129M	SHIM (0.30MM)	49	47	23-81842M	WASHER	21	12
15-19130M	SHIM (0.40MM)	49	47	23-81861M	WASHER	33	19
15-19131M	SHIM (0.50MM)	49	47	23-81930M	BUSHING	43	4
16-41883M	STUD	37	25	23-81941M	BUSHING	29	19
16-811028M	STUD	23	15	23-81945M	BUSHING	33	10
16-84870M	STUD	13	7	23-81946M	BUSHING	35	43
16-95505M	STUD	5	10	23-81949M	BUSHING	5	16
17-11794M	PIN	29	4	23-81959M	BUSHING	39	14
17-14229M	DOWEL PIN	7	37	23-81961M	BUSHING (LOWER)	39	12
17-19109M	PIN	39	36	23-81964M	BUSHING (UPPER)	39	11
17-41267M	PIN	7	4	23-82119M	SPACER	33	18
17-41267M	ROLL PIN	7	6	23-826982M	BUSHING	43	4A
17-41275M	DOWEL PIN	49	37	23-82851M	BUSHING	25	33
17-81882M	PIN	39	40	23-82851M	COLLAR	13	4
17-81888M	ROLL PIN	39	20	23-82929M	COLLAR	9	46
17-81899M	CROSS PIN	49	39	23-83310M	COLLAR	33	27
17-81907M	RIVET	33	5	23-83310M	COLLAR	37	27
17-82144M	ROLL PIN	41	45	23-83585M	PLUG	7	2
17-82148M	ROLL PIN	39	23	23-83589M	BUSHING	7	21
17-82155M	ROLL PIN	37	18	23-83590M	SHAFT	7	10
17-82156M	ROLL PIN	35	44	23-84454M	COLLAR	29	22
17-82364M	DOWEL PIN	19	3	23-84804M	SLEEVE	47	27
17-82364M	DOWEL PIN	43	9	23-84819M	SEAL	49	56
17-82364M	DOWEL PIN	45	4	23-84911M	COLLAR	5	7
17-82364M	DOWEL PIN	49	60	23-97142M	COLLAR	37	15
17-82368M	DOWEL PIN	39	9	24-19110M	SPRING	41	42
17-83140M	RIVET	3	11	24-30189	SPRING	53	12
17-84762M	ROLL PIN	23	6	24-80331M	SPRING	29	26
17-84903M	RIVET	3	9	24-80610M	SPRING	31	4
17-94569M	TILT LOCK PIN ASSEMBLY	41	43	24-814460M	SPRING	29	13
17-95552M	PIN	41	53	24-815007M	SPRING	41	52
18-82124M	COTTER PIN	37	23	24-82078M	SPRING	49	36
18-82125M	COTTER PIN	9	49	24-82079M	SPRING	7	39
18-82125M	COTTER PIN	37	32	24-82095M	SPRING	33	9
18-82125M	COTTER PIN	37	8	24-83588M	SPRING	7	3
18-82125M	COTTER PIN	39	41	24-83591M	SPRING	7	9
18-82127M	COTTER PIN	37	19	24-84461M	SPRING	37	11
18-82132M	COTTER PIN	45	15	24-84462M	SPRING	37	12
18-82132M	COTTER PIN	51	70	24-84927M	SPRING	17	12
19-13979	DRAIN PLUG KIT	55	5	24-91642M	SPRING	39	33
21-16615	CHECK VALVE KIT	55	15	24-95553M	SPRING	41	54
21-41888M	CHECK VALVE	31	6	24-97140M	SPRING	37	16
21-80727M	CHECK VALVE	19	2	25-20415	O-RING	53	11
21-811046M	CHECK VALVE	27	50	25-80350M	O-RING	29	27
22-13563A3	FUEL CONNECTOR	53	19	25-811042M	O-RING	25	4
22-80122M	FITTING	19	1	25-811044M	O-RING	25	6
22-811148M	CONNECTOR	25	38	25-811175M	O-RING	49	49
22-811149M	CONNECTOR	27	45	25-82060M	GROMMET	15	19
22-811156M	CONNECTOR - ELECTRIC	31	31	25-82064M	GROMMET	33	14
22-814599M	CONNECTOR	27	47	25-82069M	GROMMET	13	16
22-81924M	PLUG	47	2	25-82070M	GROMMET	41	47
22-82369M	GREASE FITTING	39	3	25-82258M	O-RING	15	17
22-82369M	GREASE FITTING	43	2	25-82268M	O-RING	21	11
22-89771--1	FITTING	53	14	25-82274M	O-RING	39	13
22-95633M	FLUSH PLUG	49	55	25-826966M	O-RING (SEE NOTE #2)	31	24

PARTS INDEX

Part Number	Description	Pg.	Ref. No.	Part Number	Description	Pg.	Ref. No.
25-84054M	O-RING	47	20	28-81603M	KEY	47	25
25-84089M	O-RING	21	15	28-81915M	KEY	11	24
25-84757M	O-RING	23	5	28-81916M	KEY	49	54
25-84760M	GROMMET	23	11	29-84452M	NEEDLE BEARING	21	7
25-84821M	O-RING (LONG)	51	72	29-84803M	ROLLER BEARING (LOWER)	47	26
25-84876M	GROMMET	13	20	30-18971M	BEARING (LOWER)	21	4
25-84876M	GROMMET	15	29	30-82295M	ROLLER BEARING	49	46
25-84910M	GROMMET	5	9	30-96659M	BEARING (UPPER)	21	3
25-84915M	GROMMET	5	5	31-82315M	ROLLER BEARING	49	50
25-84950M	GROMMET	15	25	31-82321M	ROLLER BEARING (FORWARD)	49	34
25-84957M	O-RING (SEE NOTE#1)	31	24	31-84805M	ROLLER BEARING (UPPER)	47	29
25-93114M	DAMPER	13	3	32-13992	VINYL TUBE	55	17
25-93114M	DAMPER	25	31	32-16571M	HOSE	53	15
25-96363M	O-RING	17	5	32-16571M	HOSE	53	17
26-18972M	OIL SEAL	21	14	32-18028	HOSE	59	10
26-19133M	OIL SEAL	21	13	32-18936M	HOSE	15	26
26-43114M	SEAL	45	16	32-811045M	HOSE	19	6
26-80239M	SEAL (LOWER)	51	69	32-811045M	HOSE	25	11
26-811021M	OIL SEAL	19	21	32-811047M	HOSE	27	51
26-82233M	OIL SEAL	47	21	32-811136M	HOSE	25	28
26-84781M	SEAL (LOWER)	45	13	32-811142M	HOSE	27	49
26-84781M	SEAL (UPPER)	45	12	32-811143M	TUBING	27	46
26-84782M	SEAL (LONG)	45	14	32-81324M	HOSE	31	30
26-84813M	OIL SEAL	49	51	32-81324M	HOSE - ELECTRIC	31	32
26-84818M	SEAL (UPPER)	51	68	32-81324M	HOSE (MANUAL)	31	29
26-84838M	SEAL	43	5	32-814966M	HOSE	27	44
26-84840M	SEAL	43	7	32-81605M	WATER TUBE (SHORT)	51	67
26-91637M	SEAL	39	2	32-82012M	HOSE	25	37
26-97635M	SEAL (SHORT)	45	14	32-82012M	HOSE	31	20
27-16616	GASKET KIT	55	24	32-82012M	HOSE (ELECTRIC)	31	29
27-18026	GASKET	59	7	32-822379A12	FUEL LINE ASSEMBLY	53	8
27-19138M	GASKET	19	11	32-84816M	WATER TUBE (LONG)	51	67
27-41272M	GASKET	47	23	33-53098	SPARKPLUG	19	28
27-41273M	GASKET	47	17	34-84759M	REED SET (REED STOPS NOT INCLUDED)	23	17
27-80569M	GASKET- MANUAL	23	18	35-11931M	FUEL FILTER ASSEMBLY (SEE NOTE#1)	31	22
27-80571M	GASKET - MANUAL	23	19	35-11934M	FILTER (SEE NOTE#1)	31	23
27-80572M	GASKET	23	14	35-16624	OIL FILTER AND LEVEL SENSOR KIT	55	12
27-80590M	GASKET	29	2	35-18029	FILTER	59	11
27-80613M	GASKET	31	5	35-18576	FUEL FILTER KIT	55	16
27-80614M	GASKET	31	7	35-826964M	FILTER ASSEMBLY (SEE NOTE #2)	31	22
27-80662M	GASKET	43	16	35-826965M	FILTER (SEE NOTE #2)	31	23
27-80757M	GASKET	31	14	36-16619	CAP	55	3
27-81031M	GASKET	19	13	36-18962M	FUEL TANK CAP	53	3
27-811029M	GASKET- ELECTRIC	23	20	36-814591M	CAP	25	24
27-811030M	GASKET - ELECTRIC	23	21	36-816976A1	FILLER CAP	59	2
27-811137M	GASKET	25	21	37-14617M	DECAL, SIDE (ENGLISH)	53	1
27-811162M	GASKET	3	14	37-42434M	DECAL (HP)-	5	12
27-811164M	GASKET - ELECTRIC	5	22	37-810934A92	DECAL SET	3	2
27-81573M	GASKET	45	10	37-81202M	DECAL (Shift Indicator)	3	12
27-81612M	GASKET	43	19	37-814527M	DECAL	3	16
27-816977	GASKET	59	3	37-95489M	DECAL, TOP (ENGLISH)	53	2
27-81987M	GASKET	47	3	37-95503M	DECAL, TOP (FRENCH)	53	2
27-84737M	GASKET	19	20	37-95504M	DECAL, SIDE (FRENCH)	53	1
27-84741M	GASKET	19	24	39-14235M	PISTON RING SET (STANDARD)	21	6
27-84775M	GASKET	45	3				
27-95500M	GASKET	53	7				
27-95653M	SEAL	47	15				
27-95653M	SEAL	51	80				
27-95656M	GASKET	47	30				
27-96656M	GASKET	19	29				

PARTS INDEX

Part Number	Description	Pg.	Ref. No.	Part Number	Description	Pg.	Ref. No.
39-14236M	PISTON RING SET (2ND. O.S. 72.50MM)	21	6	84-811184M	WIRE	15	23
39-84747M	PISTON RING SET (1ST. O.S. 72.25MM)	21	6	84-84871M	GROUND WIRE	13	10
41-84749M	PISTON PIN	21	8	84-84883M	GROUND WIRE	11	12
43-811040M	DRIVEN GEAR	25	2	84-97133M	WIRE	15	5
43-84806M	PINION GEAR	47	31	84-97781M	WIRE	15	24
43-84808M	FORWARD GEAR	49	35	84-99051M	LEAD EXTENSION	5	2
43-84810M	REVERSE GEAR	49	44	85-63709A1	SPARK PLUG CAP	13	18
44-19124M	PROPELLER SHAFT	49	43	85-815002M	INSULATOR	13	23
45-84800M	DRIVE SHAFT (SHORT)	47	24	85-815119M	SPARK PLUG CAP (NOISE SUPPRESSOR)	13	18
45-84801M	DRIVE SHAFT (LONG)	47	24	87-14227M	LANYARD IGNITION SWITCH	5	3
46-95651M	WATER PUMP HOUSING	47	8	87-815003M	THERMO SWITCH	15	33
46-95657M	CHROME WATER PUMP KIT	51	78	87-97684M	NEUTRAL SWITCH	15	13
47-84797M	IMPELLER	47	18	88-81522M	FUSE	15	12
48-81647M	PROPELLER (PITCH 9")(ALUMINUM)	61	-	89-95642M	SOLENOID	15	2
48-81648M	PROPELLER (PITCH 8")(ALUMINUM)	61	-	89-96356M	STARTER SOLENOID ASSEMBLY	15	1
48-81649M	PROPELLER (PITCH 10-1/2")(ALUMINUM)	61	-	91-81669M	TOOL KIT	5	24
48-82827M	PROPELLER (PITCH 13")(ALUMINUM)	61	-	125-82214M	WASHER	7	33
48-84976M	PROPELLER (PITCH 11-1/4")(ALUMINUM)	61	-	253-811178M	FLYWHEEL (ELECTRIC)	11	1
48-84977M	PROPELLER (PITCH 14")(ALUMINUM)	61	-	253-8927M	FLYWHEEL (MANUAL)1	11	1
48-88166A4	PROPELLER (PITCH 9")(STEEL)	61	-	463-811026M	CRANKSHAFT ASSEMBLY (ELECTRIC)	21	1
48-88168A4	PROPELLER (PITCH 12")(STEEL)	61	-	463-9068M	CRANKSHAFT ASSEMBLY (MANUAL)	21	2
50-12066A9	STARTER ROPE	7	18	761-8484M	PISTON (STANDARD)	21	5
50-19137M	STARTER ASSEMBLY	7	0-1	761-8485M	PISTON (1ST. O.S. 72.25MM)	21	5
50-83587M	STARTER SHEAVE	7	5	761-8486M	PISTON (2ND. O.S. 72.50MM)	21	5
50-97693M	ELECTRIC MOTOR ASSEMBLY	17	1	870-811024M	CYLINDER BLOCK (ELECTRIC)	19	0-1
52-81644M	CLUTCH	49	38	870-9371M	CYLINDER BOLCK (MANUAL)	19	0-1
53-80678M	RING	49	40	968-7194M	CYLINDER HEAD	19	10
53-81264M	WASHER	21	10	1252-811134M	OIL TANK	25	20
53-82328M	SNAP RING	29	24	1259-812410A1	FUEL TANK ASSEMBLY (PLASTIC -6.6 GALLONS)	59	1
53-82330M	SNAP RING	41	46	1383-811034M	CARBURETOR (MANUEL)	29	0-1
53-84895M	SNAP RING	7	8	1383-811035M	CARBURETOR (ELECTRIC)	29	0-1
54-16574M	CLAMP	53	18	1484-9797M	CLAMP BRACKET (PORT)	39	15
54-811150M	CLIP	27	43	1484-9798M	CLAMP BRACKET (STARBOARD)	39	16
54-811185M	CLAMP	15	28	1485-9792M	SWIVEL BRACKET	39	1
54-814585M	CLIP	25	12	1587-7843M	DRIVESHAFT HOUSING (LONG)	45	1
54-814589M	CLAMP - ELECTRIC	23	27	1587-826990M	DRIVESHAFT HOUSING (SHORT)	45	1
54-814589M	CLIP	25	10	1587-827111M	DRIVESHAFT HOUSING (LONG)	45	1
54-814598M	CLIP	27	48	1587-9244M	DRIVESHAFT HOUSING (SHORT)	45	1
54-82046M	CLAMP	19	7	1651-811171M	GEAR HOUSING ASSEMBLY (SHORT)	47	0-1
54-82047M	CLAMP (QTY. OF 8 ON ELECTRIC)	31	21	1651-811171M	GEAR HOUSING ASSEMBLY (SHORT)	49	0-1
54-82047M	CLIP	25	36	1651-811172M	GEAR HOUSING ASSEMBLY (LONG)	47	0-1
54-83577M	CLAMP - ELECTRIC	13	26	1651-811172M	GEAR HOUSING ASSEMBLY (LONG)	49	0-1
54-84893M	CLIP	7	20	1651-811172M	GEAR HOUSING ASSEMBLY (LONG)	49	0-1
54-84914M	CLAMP	5	17	1651-811172M	GEAR HOUSING ASSEMBLY (LONG)	49	0-1
54-96348M	CLAMP	23	23	1651-9362M	GEAR HOUSING	47	1
54-96654M	CLAMP	13	19	2168-811158M	TOP COWL (MANUAL)	3	1
54-97772M	CLAMP	15	30				
84-811183M	ENGINE WIRING HARNESS	15	22				

PARTS INDEX

Part Number	Description	Pg.	Ref. No.	Part Number	Description	Pg.	Ref. No.
2168-811159M	TOP COWL (ELECTRIC) ...	3	1				
2168-811913M	BOTTOM COWL	5	1				
2168-814530M	BOTTOM COWL	5	1				
2169-7102M	HOUSING	7	1				
2169-811912M	HOUSING	7	1				